



Port Hudson Pride Public Meeting
EBR Director of Transportation & Drainage
September 29, 2025



WORKING HARD TO MOVE EAST BATON ROUGE FORWARD



Port Hudson-Pride Rd

Agenda

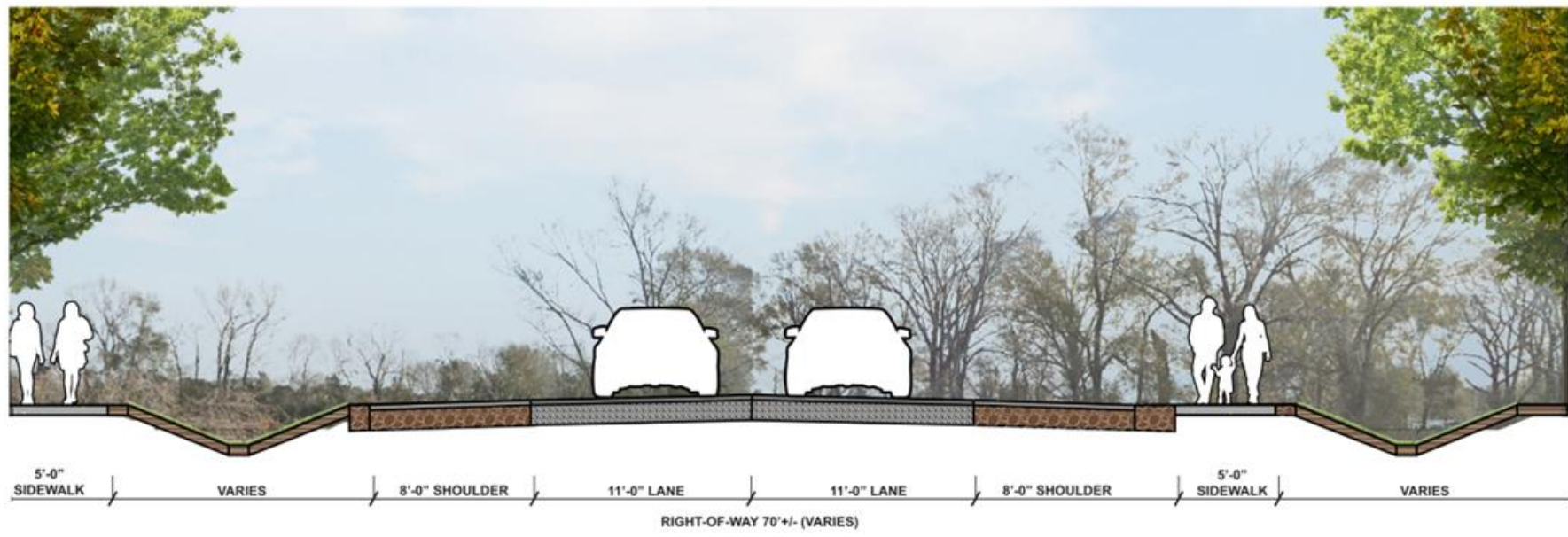
- Provide Project Overview Recap
- Present New Design Alternative
- Discuss Potential Property Impacts
- Review Updated Schedule
- Q&A

Project Overview

Project Boundary: LA 964 to LA 19

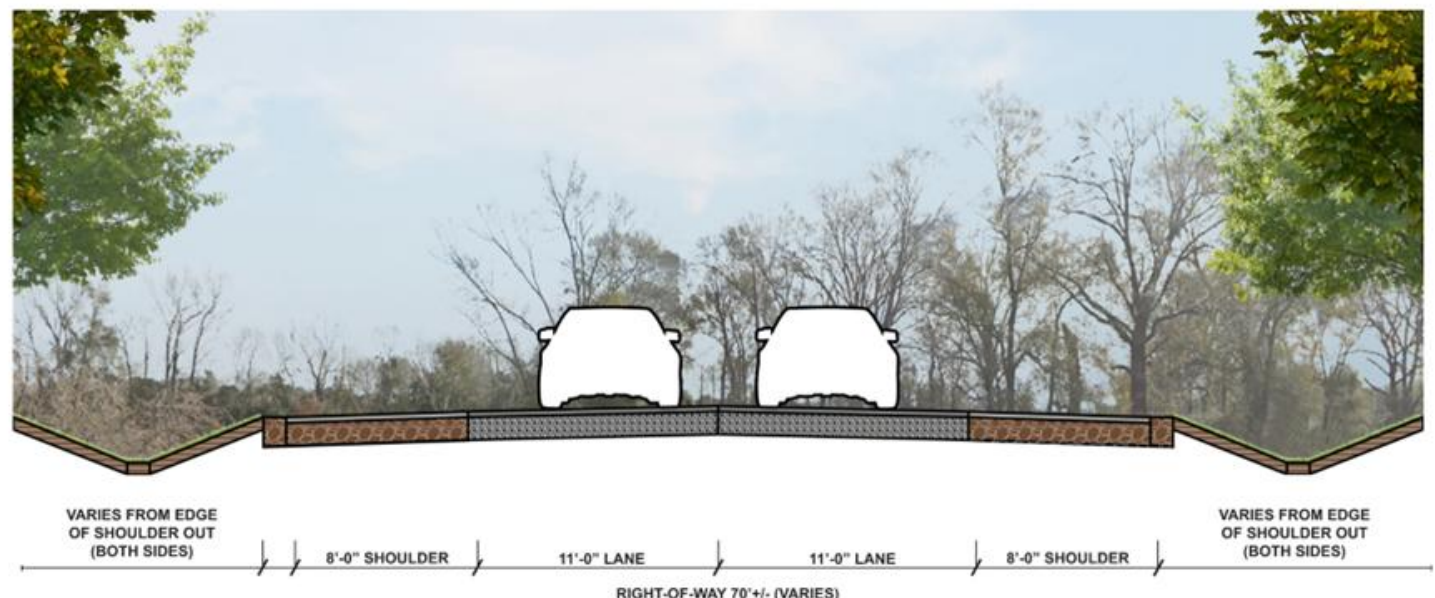
Improvements:

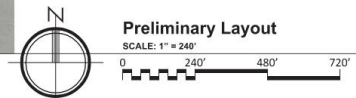
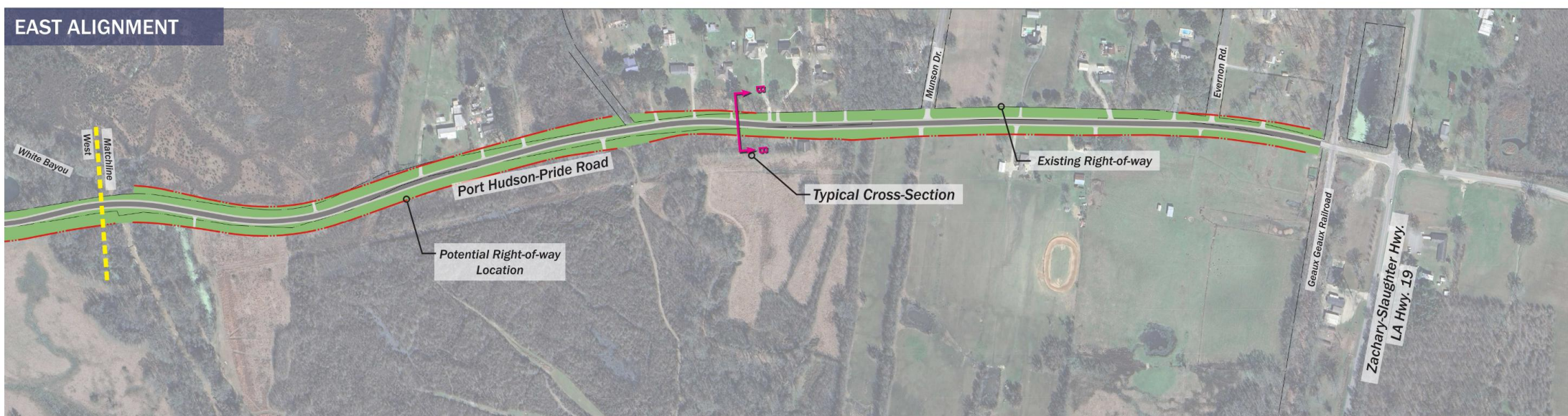
- Rebuild roadway, reduce curvature
- Add paved shoulders
- Reconstruct drainage ditches
- R/W Acquisition approx. 20-45'.
- Add sidewalks for LA 964 to Pin Oak
- Bridge improvements



Typical Section AA - Proposed Improvements (LA 946 TO PIN OAK SUBDIVISION)

Not To Scale





Preliminary Layout

Baseline Schedule:

- **Right-of-Way Acquisition:**
2/2026 - 11/2026
- **Clearing & Grubbing:**
12/2026 - 8/2027
- **Utility Relocation:**
8/2027 - 8/2028
- **Roadway Construction:**
9/2028 - 9/2030

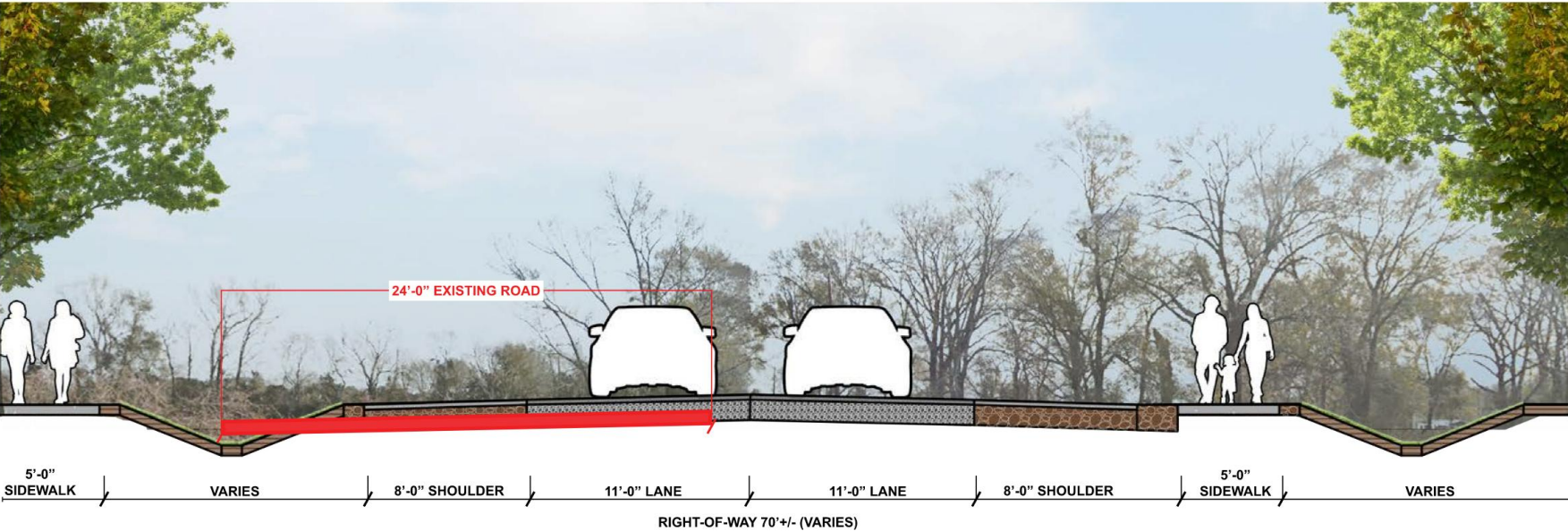
February 2026- September 2030

Approx. 4 years to complete

New Design Alternative

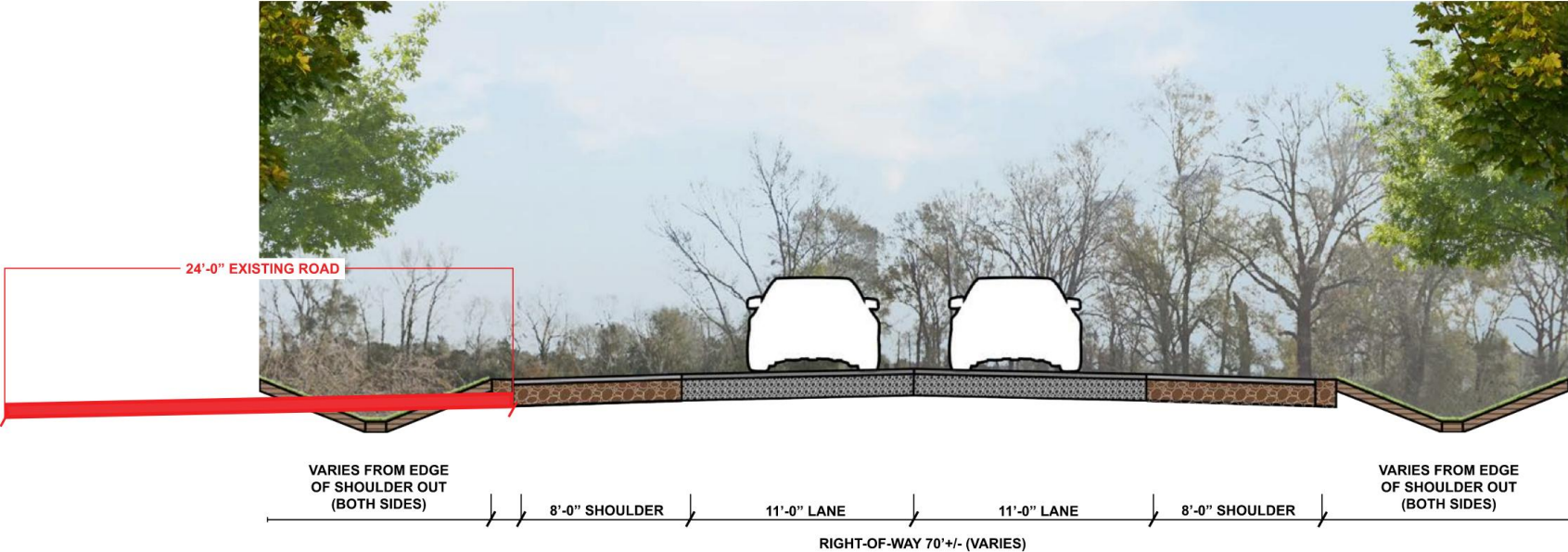
Widening the road to the south side only.

PROPOSED IMPROVEMENT PLAN - CROSS SECTION



Typical Section AA - Proposed Improvements (LA 946 TO PIN OAK SUBDIVISION)

Not To Scale



New Design Alternative

Advantages

Concurrent Activities

- Clearing and utility relocation can begin while design and R/W acquisition are ongoing.

Reduces potential schedule delays

- Decoupling R/W acquisition and utility relocations
- **Reduces right of way acquisitions**
 - Property acquisitions reduce from approx. 60 to 14

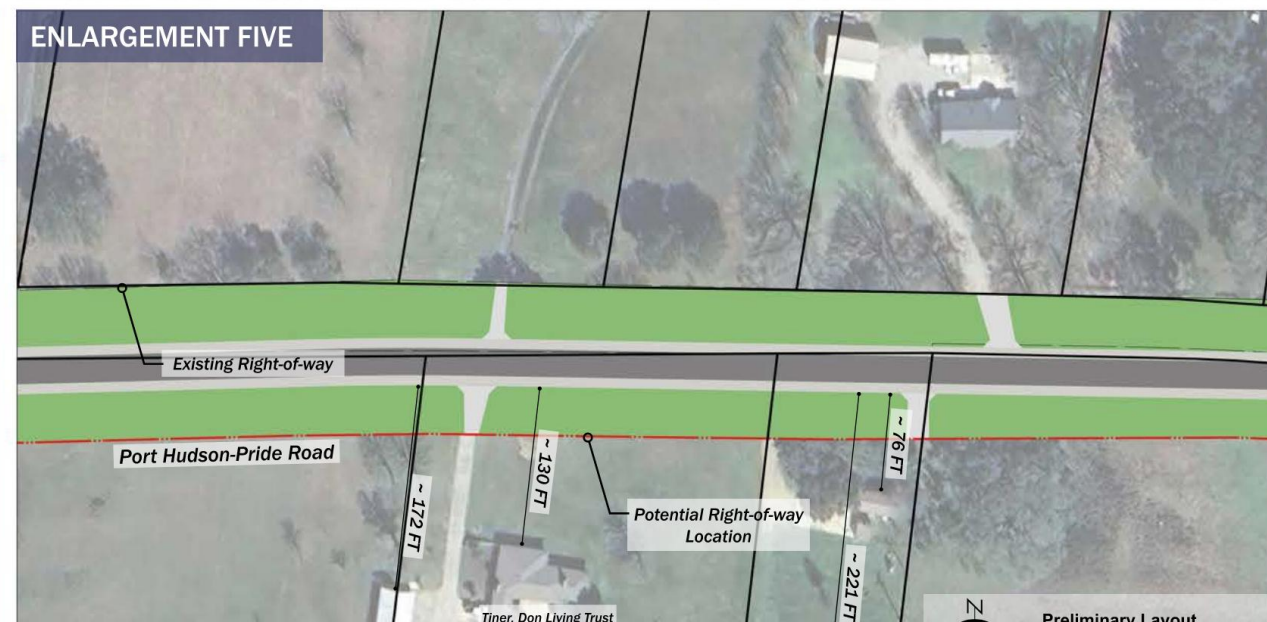
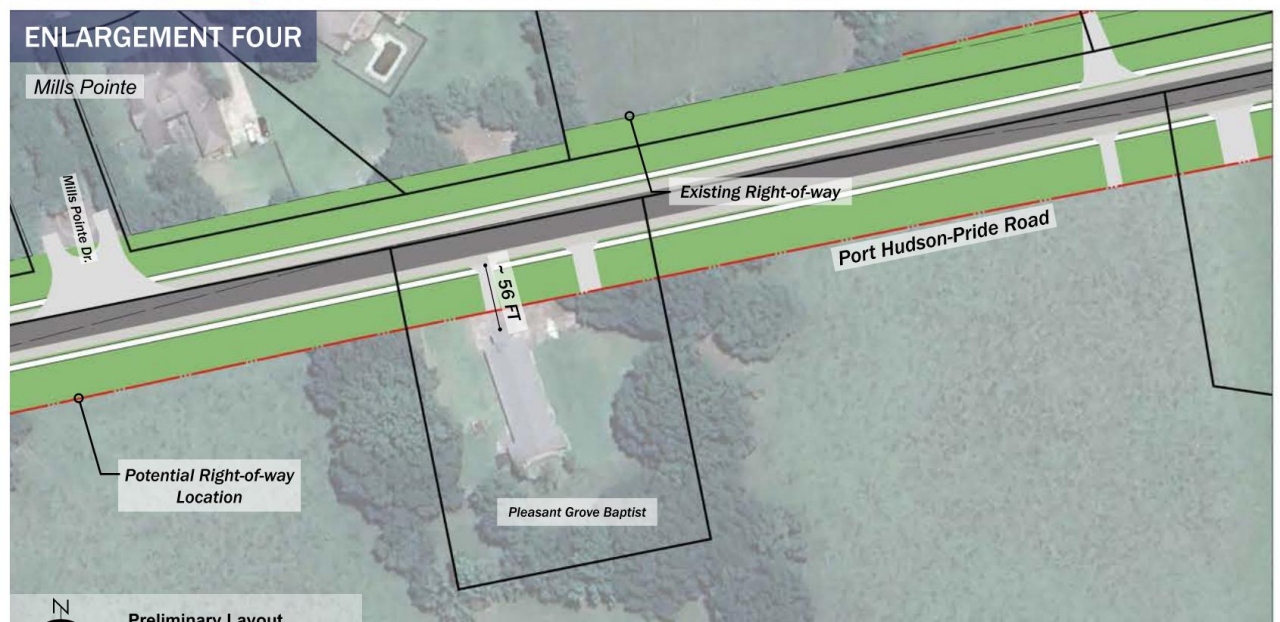
Disadvantages

Increased ROW takings for southern property owners.

Approximately 20 – 35' of additional R/W needed.

Total R/W needed will range from 15 – 75' from southern property owners.

Potential Property Impacts



Potential Schedule w/ Alternative:

Right-of-Way Acquisition:

2/2026 - 11/2026

No Change

Utility Relocation:

~~8/2027 - 8/2028~~

9/2026 - 8/2027
(12-month acceleration)

Clearing & Grubbing:

~~12/2026 - 8/2027~~

3/2026 - 9/2026
(12-month acceleration)

Roadway Construction:

~~9/2028 - 9/2030~~

1/2027 - 1/2029
(12-month acceleration)

February 2026- January 2029
Approx. 3 years to complete

QUESTIONS?

For more information visit
www.movebr.brla.gov