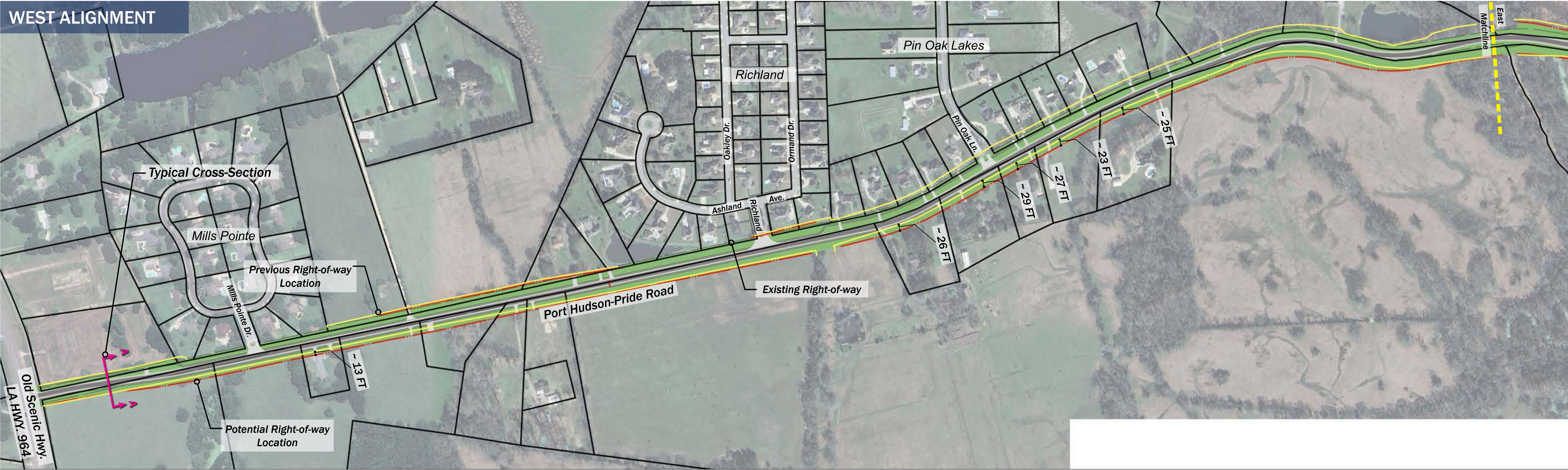


PROPOSED IMPROVEMENT PLAN - OVERALL ALIGNMENT

WEST ALIGNMENT



EAST ALIGNMENT

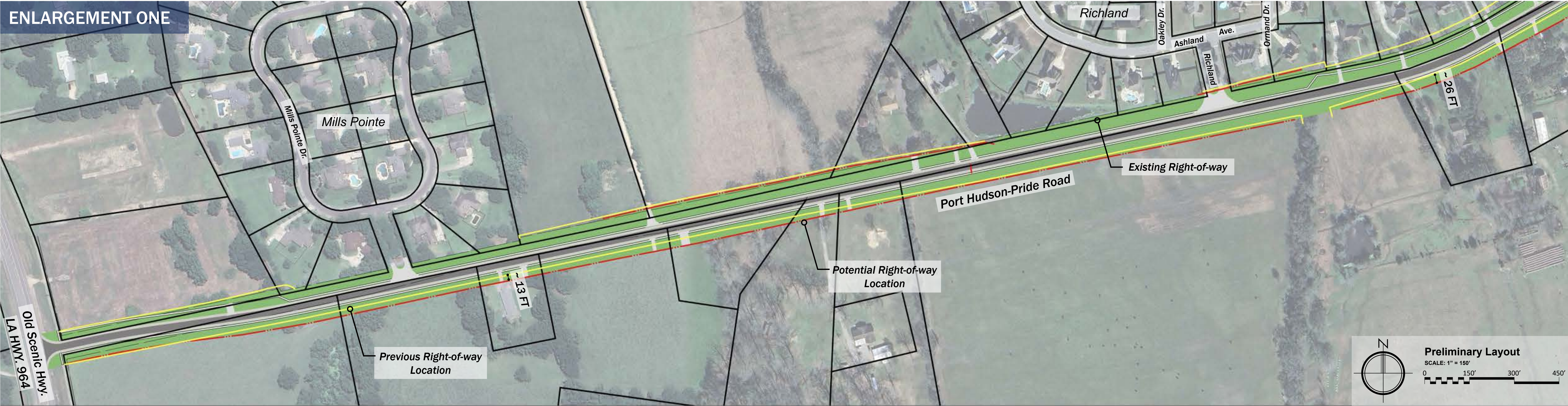


NOTE:
ROADWAY IMPROVEMENTS ARE CONCEPTUAL ONLY AND SUBJECT TO CHANGE BASED
UPON FINAL APPROVAL AND ENGINEERING DESIGN. MOVEBR IS NOT LIABLE FOR THE
USE OR MISUSE, MISINTERPRETATION, OR ERRORS IN ANY CALCULATIONS DERIVED
FROM ILLUSTRATED CONCEPTUAL IMPROVEMENT PLAN.

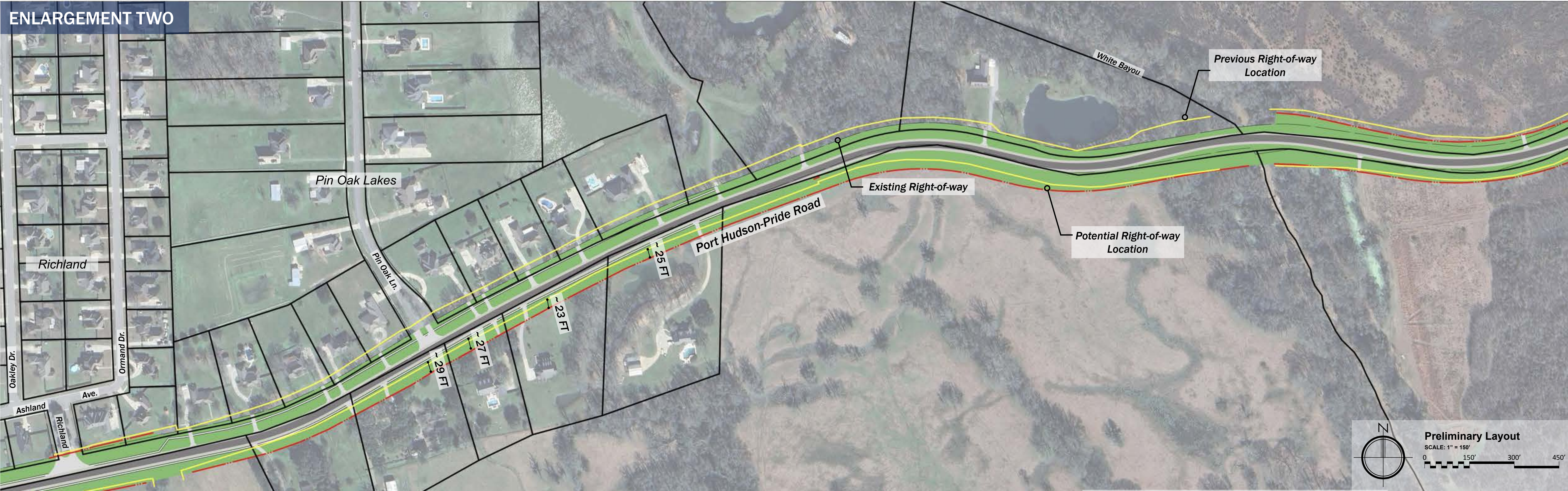


PROPOSED IMPROVEMENT PLAN - OVERALL ALIGNMENT

ENLARGEMENT ONE



ENLARGEMENT TWO



Port Hudson - Pride Road Improvements

COMMUNITY ENGAGEMENT MEETING

September 2025

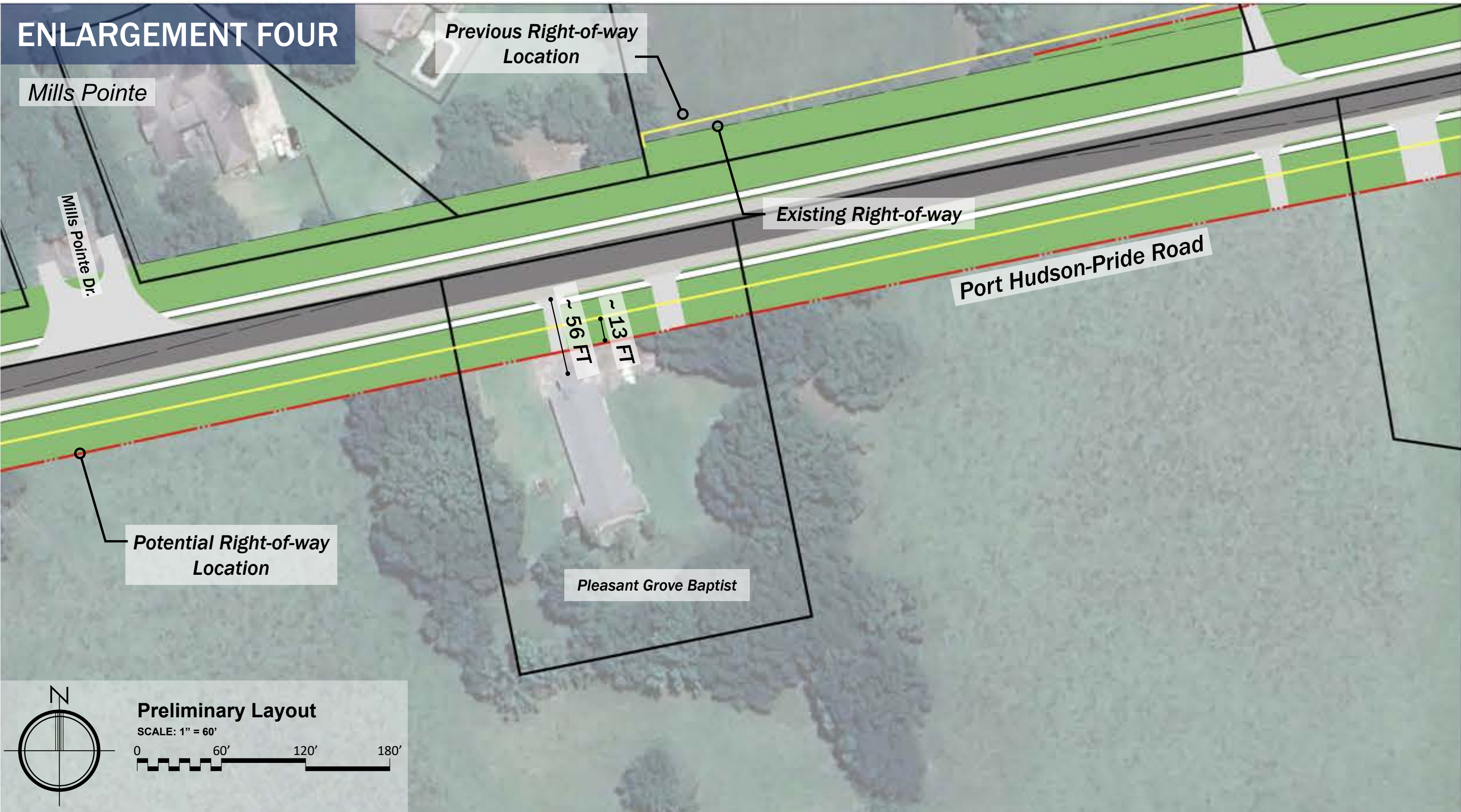
NOTE:
ROADWAY IMPROVEMENTS ARE CONCEPTUAL ONLY AND SUBJECT TO CHANGE BASED
UPON FINAL APPROVAL AND ENGINEERING DESIGN. MOVEBR IS NOT LIABLE FOR THE
USE OR MISUSE, MISINTERPRETATION, OR ERRORS IN ANY CALCULATIONS DERIVED
FROM ILLUSTRATED CONCEPTUAL IMPROVEMENT PLAN.



ENLARGEMENT THREE



ENLARGEMENT FOUR



ENLARGEMENT FIVE



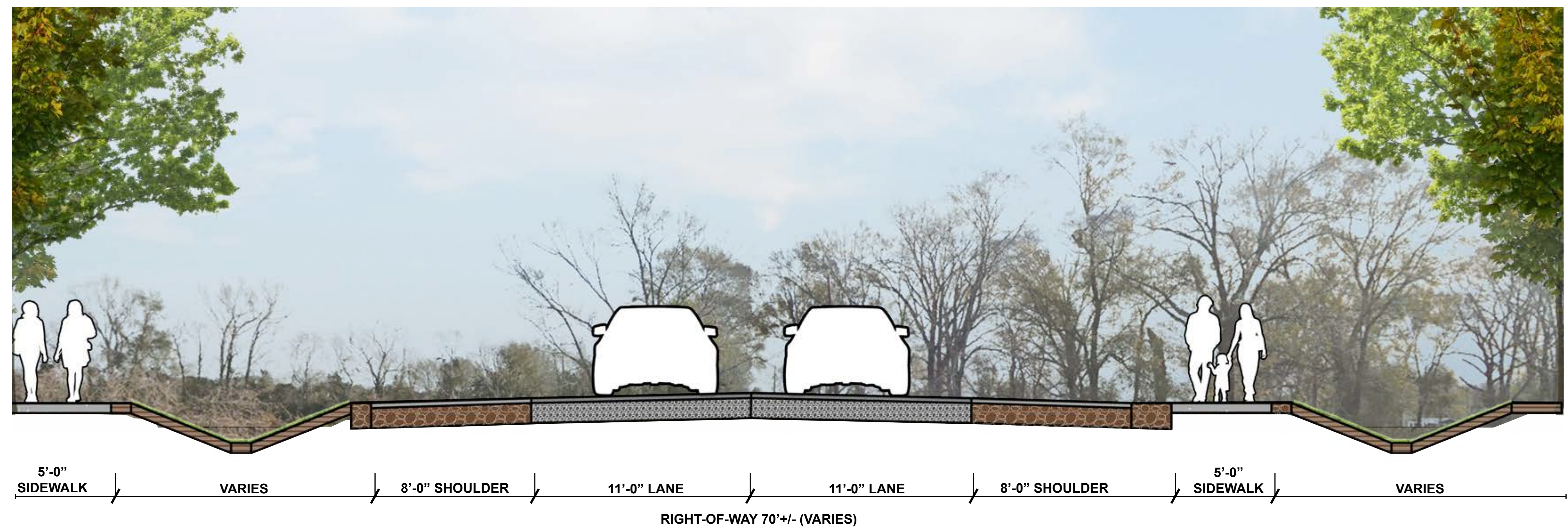
Port Hudson - Pride Road Improvements

COMMUNITY ENGAGEMENT MEETING

September 2025

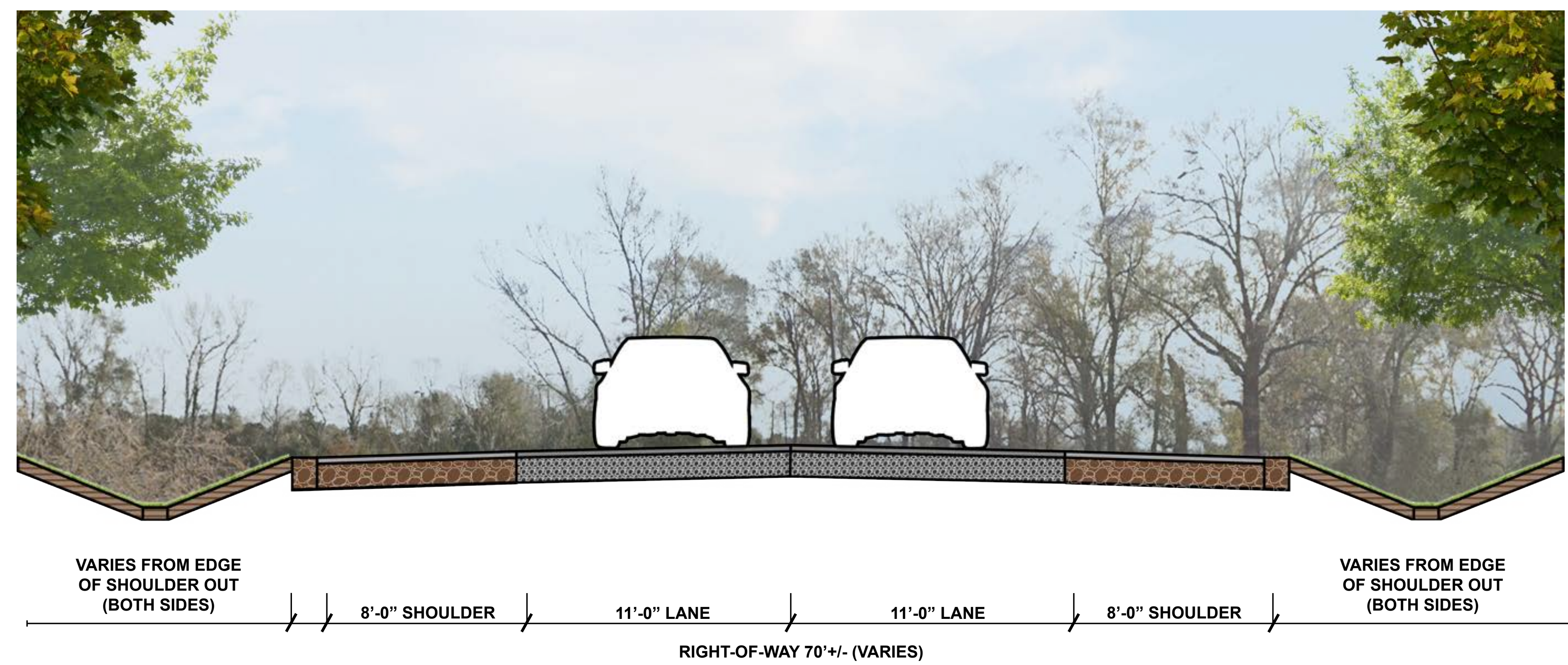
NOTE:
ROADWAY IMPROVEMENTS ARE CONCEPTUAL ONLY AND SUBJECT TO CHANGE BASED UPON FINAL APPROVAL AND ENGINEERING DESIGN. MOVEBR IS NOT LIABLE FOR THE USE OR MISUSE, MISINTERPRETATION, OR ERRORS IN ANY CALCULATIONS DERIVED FROM ILLUSTRATED CONCEPTUAL IMPROVEMENT PLAN.





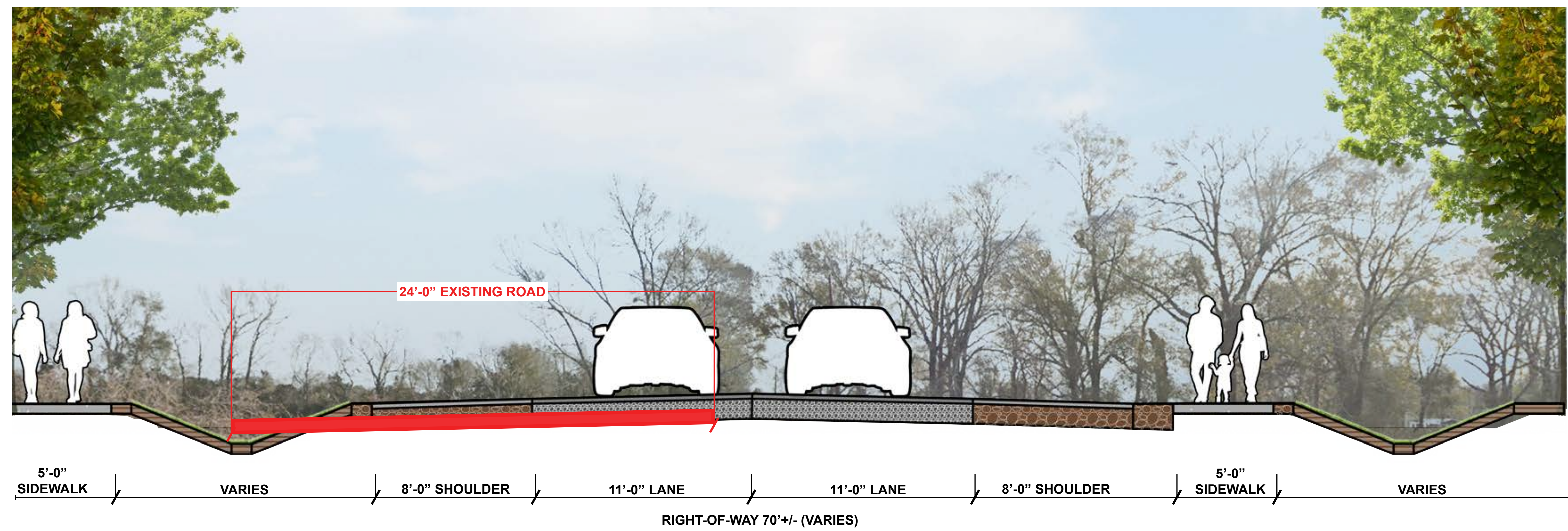
Typical Section AA - Proposed Improvements (LA 946 TO PIN OAK SUBDIVISION)

Not To Scale



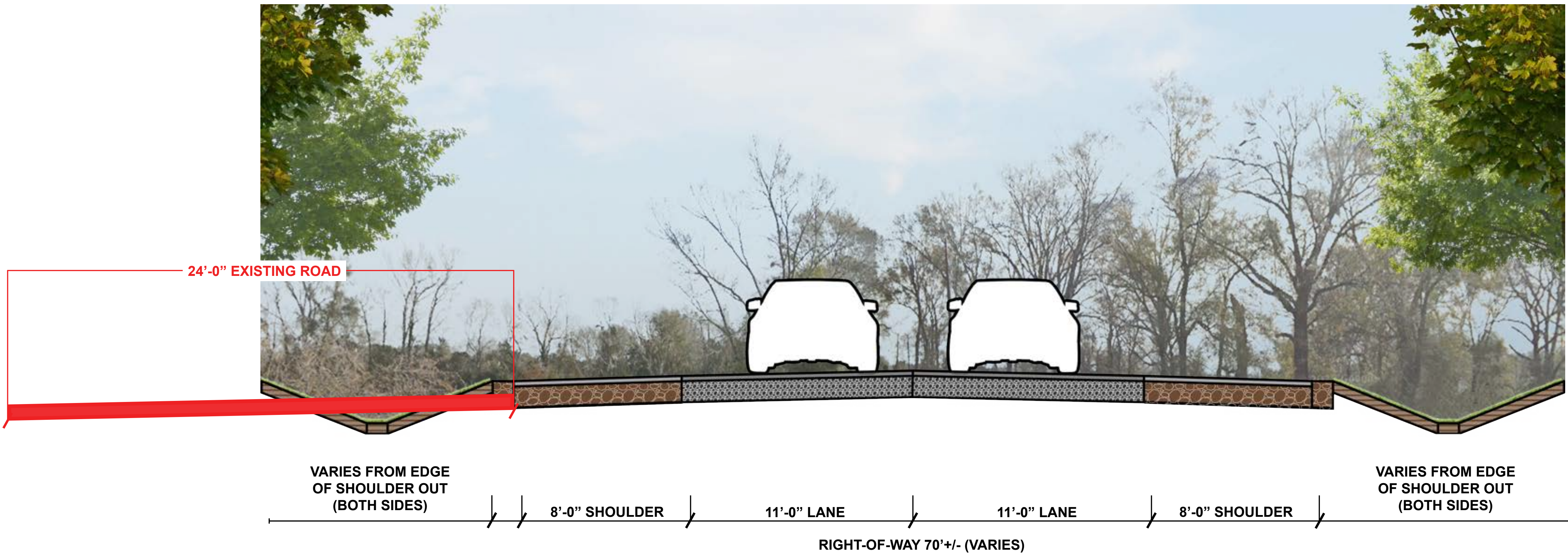
Typical Section BB - Proposed Improvements (PIN OAK SUBDIVISION TO LA 19)

Not To Scale



Typical Section AA - Proposed Improvements (LA 946 TO PIN OAK SUBDIVISION)

Not To Scale



Typical Section BB - Proposed Improvements (PIN OAK SUBDIVISION TO LA 19)

Not To Scale