

Direct Appointment Selections (DAS) Statistics



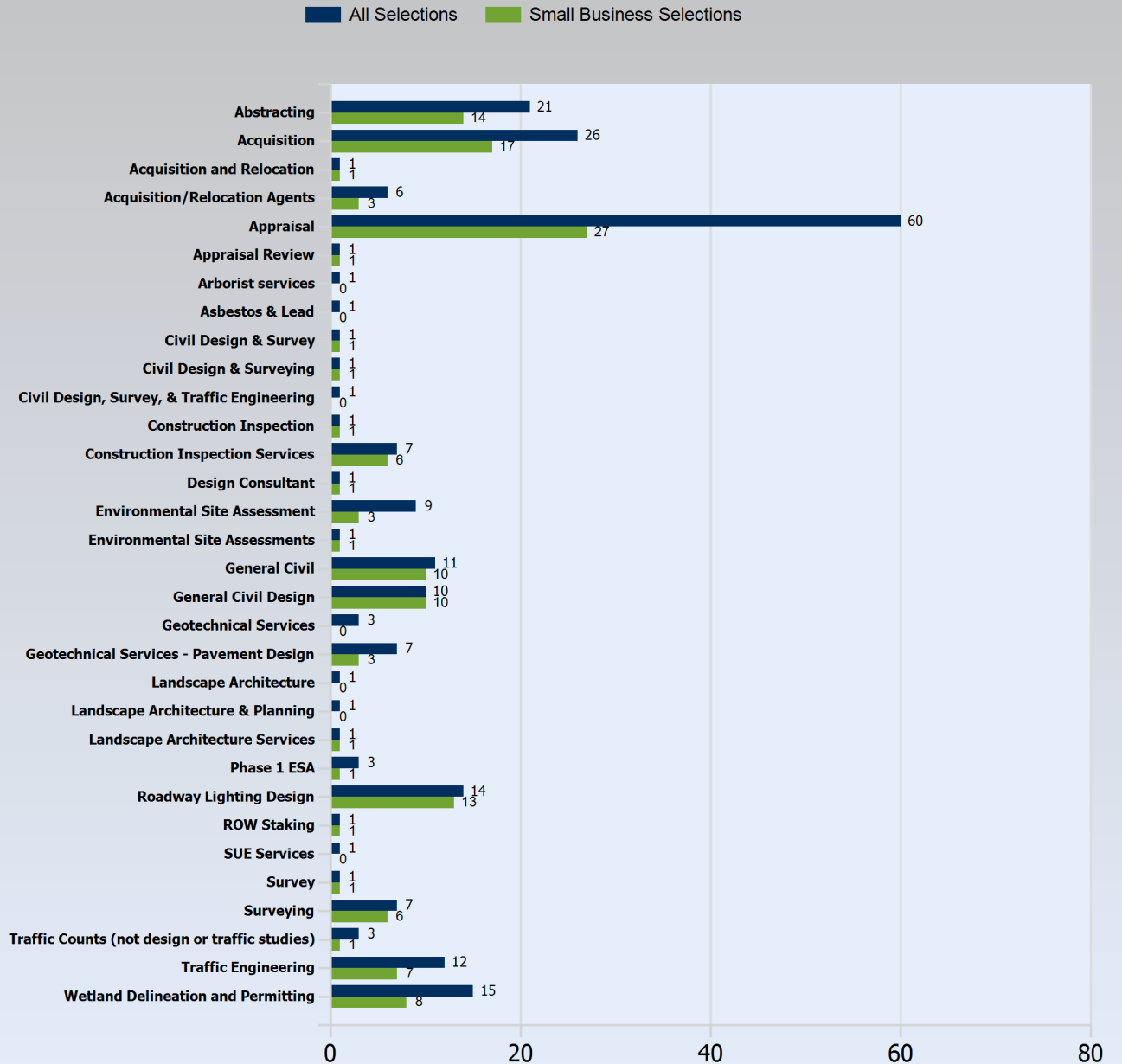
Report Ran: 12/21/2023 4:02:40 PM

* For purposes of DAS reporting, Small Businesses are defined as firms which have self-certified as one or more of the following designations: MBE, WBE, and/or VBE.

= MBE/WBE/VBE

Company Name	# of Professional Services Selected
Advanced Abstracts LLC	2
Agnes Chambers Realty	3
Aguilar Consultants, LLC	4
Aguilar Group, LLC	1
APEX Engineering Corporation	1
APS Engineering and Testing, LLC	2
ARCHITECTS PLUS	2
Ardaman & Associates, Inc.	2
Ardoin Industries, LLC	2
BDS Enterprises, Inc	2
Bonton Associates	6
Brian David Simoneaux Enterprises, Inc	1
Britlan Appraisals, Inc.	2
Bruce Britt Real Estate	2
Buchart Horn, Inc.	2
CARBO Landscape Architecture	1
Carmen Jones	2
CBRE, Inc.	1
Chenier Environmental Consulting, LLC	2
Civil Solutions Consulting Group, Inc.	2
Consulting by RBM, LLC	1
David W. Volentine, MAI	2
Diadem Realty	1
ECM Consultants	1
EDS, Inc	2
Eduok Associates, LLC	1
Effie W. Carter	1
EJES, Inc	1
EJES, Inc.	1
ELOS Environmental LLC	1
ELOS Environmental, LLC	3
Forte and Tablada	1
Fourrier & de Abreu Engineers, LLC	1
Fugro	1
Gauthier Real Estate	1
GEM-JKM Construction Consultants LLC	6
GeoEngineers, Inc	3
Geoff Wilson Engineering, LLC	2
George B. Wallace	2
GIS Engineering, LLC	2
GoDay Enterprises LC	1
GOTECH, Inc	1
GOTECH, Inc.	3
Gresham Smith	3
Gulf South Land Title Resources, LLC	2

Professional Services Selected



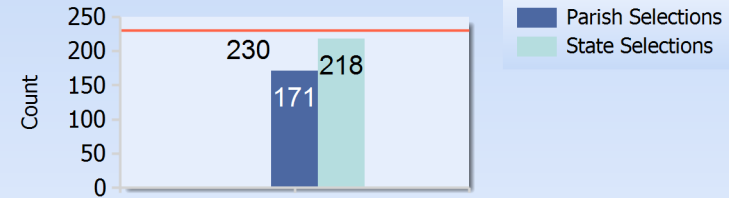
Direct Appointment Selections (DAS) Statistics



Report Ran: 12/21/2023 4:02:40 PM

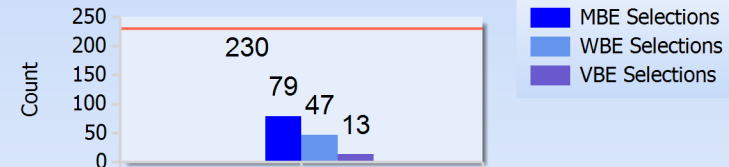
Guy Land Title Services, LLC	6
GWS	1
GWS Engineering	3
GWS Engineering, Inc.	1
Infinity Engineering Consultant, LLC	3
Infinity Engineering Consultants, LLC	1
ITS Engineers	2
James G. Lipscomb Appraisal Co., LLC	2
James I. Brantly	1
James Lieux Appraiser	3
James P. Roy	6
James, Inc. (Michael DeFelice)	6
JM Group, LLC	1
La Terre Engineering	1
La Terre Engineering, LLC	1
Lacy Baaheth, LLC	4
Land Title Investigations, LLC	4
Landfile Technologies	1
Landfile Technologies, LLC	1
LandSource, Inc.	1
Lowery Enterprises of the South, Inc	3
MAG Enterprises, Inc.	1
Mark A. O'Neal & Associates Inc.	3
Marrero, Couvillon & Associates, LLC	4
Matrix New World Engineering	6
Maurin Enterprises, LLC	1
MB Design Consultants, LLC	1
MEL, Inc.	1
Micah Fremin	2
Milton Lakvold Real Estate, LLC	1
murphy appraisal services, llc	3
Neel-Schaffer, Inc.	4
NTB Associates, Inc.	1
Patch Landscape Architecture	1
PEC	1
PEC Professional Engineering Consultants	1
Pivotal Engineering	1
Pivotal Engineering, LLC	1
Premier Geotech and Testing, LLC	1
Providence Engineering and Environmental Group, LLC	1
Quality Counts, LLC	1
Rampart Resources, Inc	2
Regis Infrastructure Group	2
Regis Infrastructure Group, LLC	3
Reich Landscape Architecture	1
Ric Bajon & Associates, LLC	3
Right of Way Services, Inc.	2
Robinson Appraisal Services, LLC	2
R-O-W Acquisitions, LLC	3
Ruba Thomas Realtor, Inc	1

Parish/State



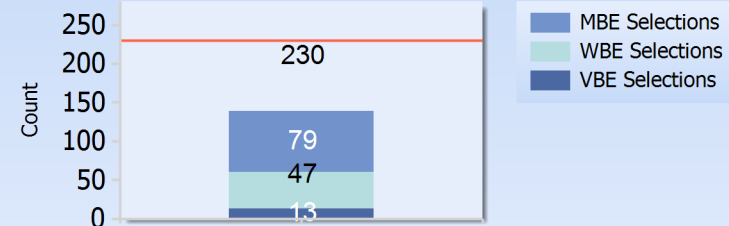
230 direct appointment selections made.
218 DAS are in State of LA.
171 DAS in state selections are in EBR Parish.

Business Types



230 direct appointment selections made.
79 DAS are MBE Selections.
47 DAS are WBE Selections.
13 DAS are VBE Selections.

Business Types - Stacked



230 direct appointment selections made.
139 DAS are Small Business Selections.

Direct Appointment Selections (DAS) Statistics



Report Ran: 12/21/2023 4:02:40 PM

SAS Land Services Inc	2
SAS Land Services, Inc	1
SJB Group, LLC	1
Southern Shores Engineering	1
Stone Property Services, LLC	1
Sustainable Design Solutions	4
Sustainable Design Solutions, LLC	3
Svaapta Group	1
Terracon Consultants, Inc.	3
The Beta Group	1
The Beta Group Engineering and Construction Services, LLC	1
The Lakvold Group, LLC	4
The Major Agency, LLC	2
Thompson Engineering, Inc.	2
Todd Tidwell Appraisals & Consulting, LLC	1
Trinity Tree Consultants	1
Urban Systems, Inc.	1
Vectura Consulting Services	1
Vectura Consulting Services, LLC	3
Volkert, Inc.	1
WTAA Engineers	1
WTAA Engineers, LLC	1

Total # of Small Business Selections = 139