



**Port Hudson Pride Public Meeting**  
**EBR Director of Transportation & Drainage**  
**September 29, 2025**



**WORKING HARD TO MOVE EAST BATON ROUGE FORWARD**



Port Hudson-Pride Rd

# Agenda

- Provide Project Overview Recap
- Present New Design Alternative
- Discuss Potential Property Impacts
- Review Updated Schedule
- Q&A

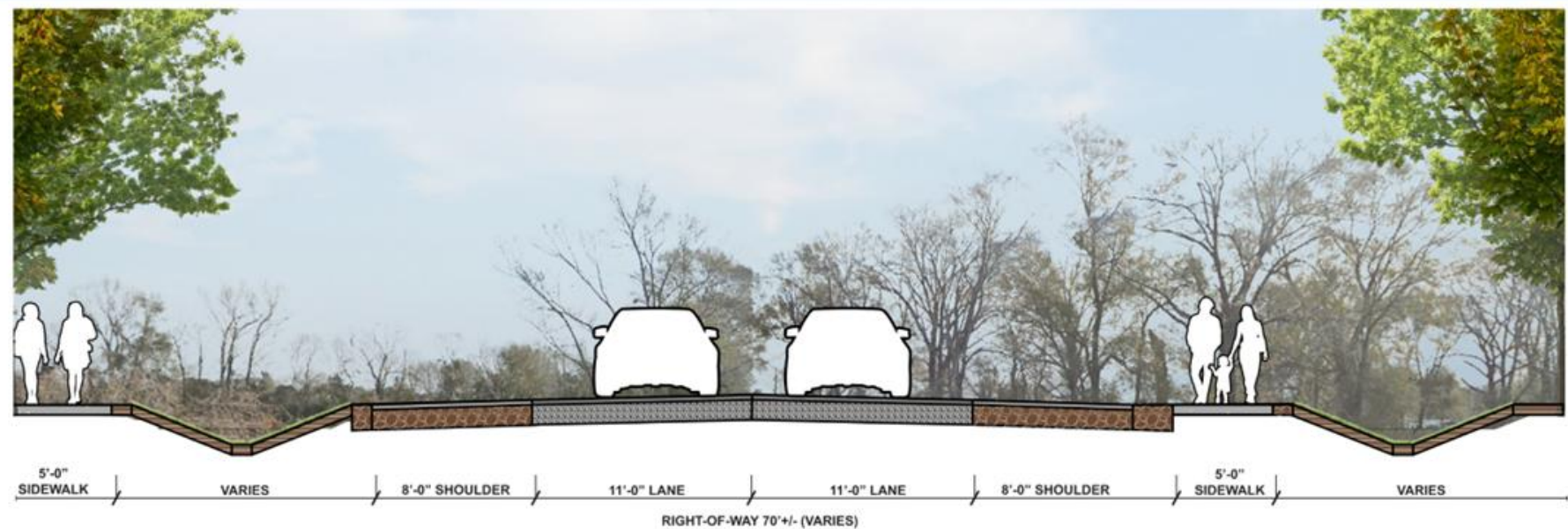
# Project Overview

**Project Boundary: LA 964 to LA 19**

## **Improvements:**

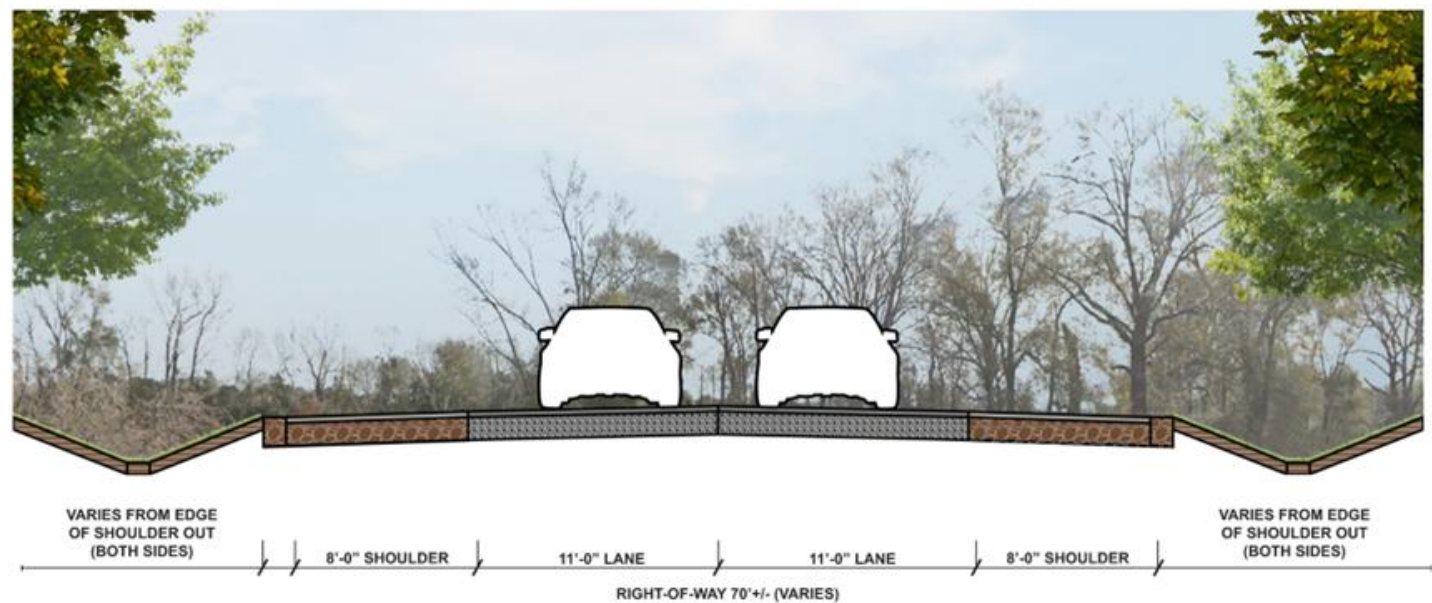
- Rebuild roadway, reduce curvature
- Add paved shoulders
- Reconstruct drainage ditches
- R/W Acquisition approx. 20-45'.
- Add sidewalks for LA 964 to Pin Oak
- Bridge improvements



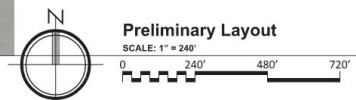
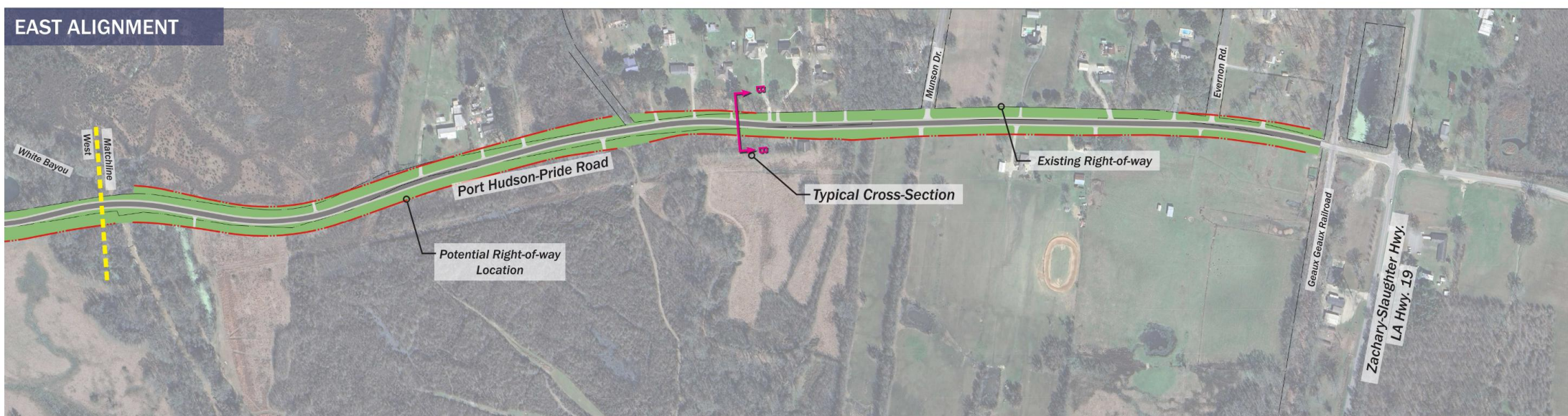


Typical Section AA - Proposed Improvements (LA 946 TO PIN OAK SUBDIVISION)

Not To Scale









# Baseline Schedule:

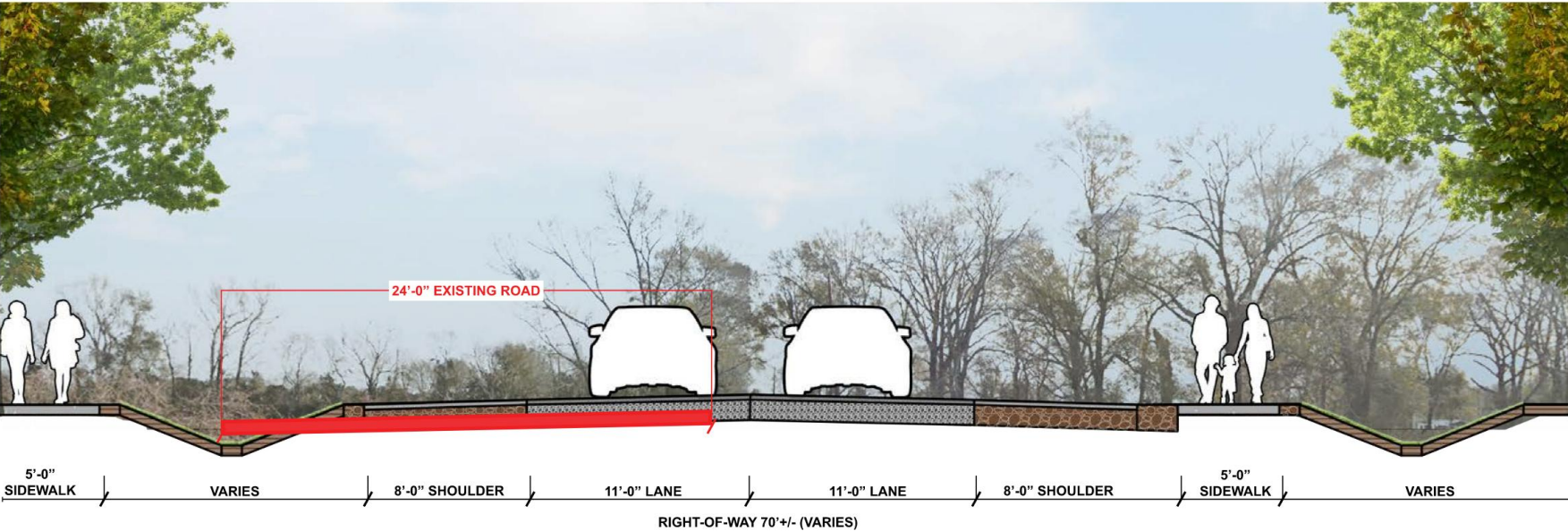
- **Right-of-Way Acquisition:**  
**2/2026 - 11/2026**
- **Clearing & Grubbing:**  
**12/2026 - 8/2027**
- **Utility Relocation:**  
**8/2027 - 8/2028**
- **Roadway Construction:**  
**9/2028 - 9/2030**

**February 2026- September 2030**

**Approx. 4 years to complete**

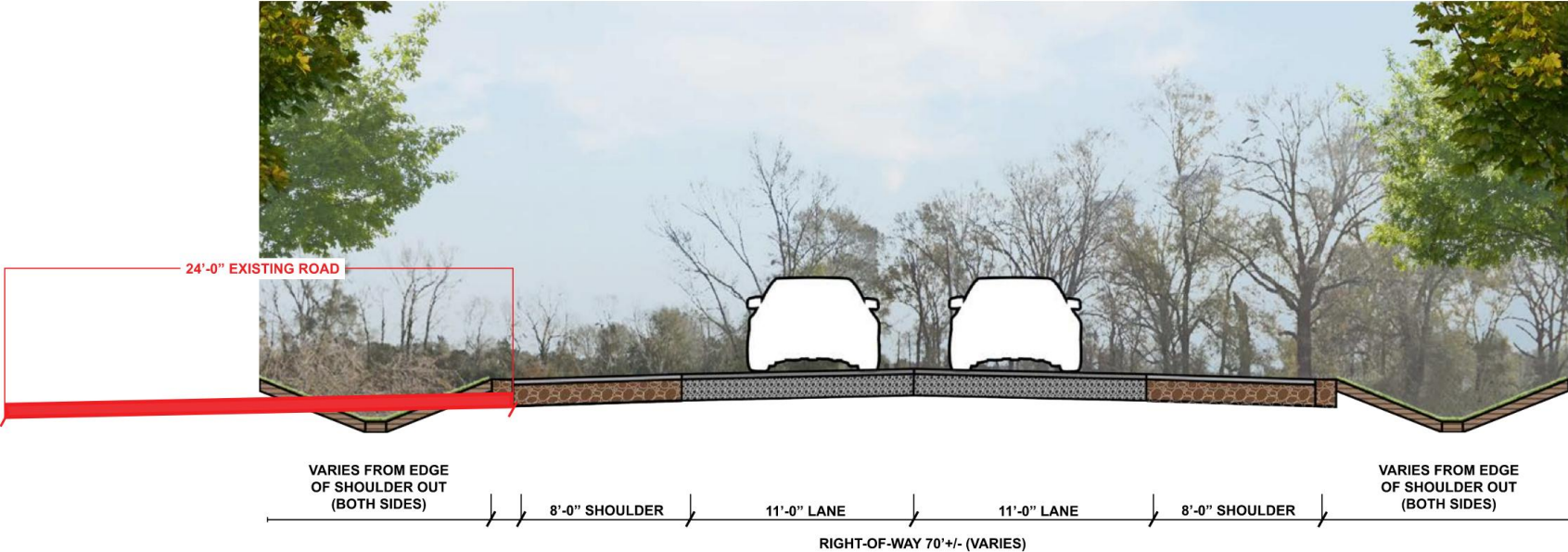
# New Design Alternative

**Widening the road to the south side only.**



Typical Section AA - Proposed Improvements (LA 946 TO PIN OAK SUBDIVISION)

Not To Scale





# New Design Alternative

## Advantages

### **Concurrent Activities**

- Clearing and utility relocation can begin while design and R/W acquisition are ongoing.

### **Reduces potential schedule delays**

- Decoupling R/W acquisition and utility relocations
- **Reduces right of way acquisitions**
  - Property acquisitions reduce from approx. 60 to 14

## Disadvantages

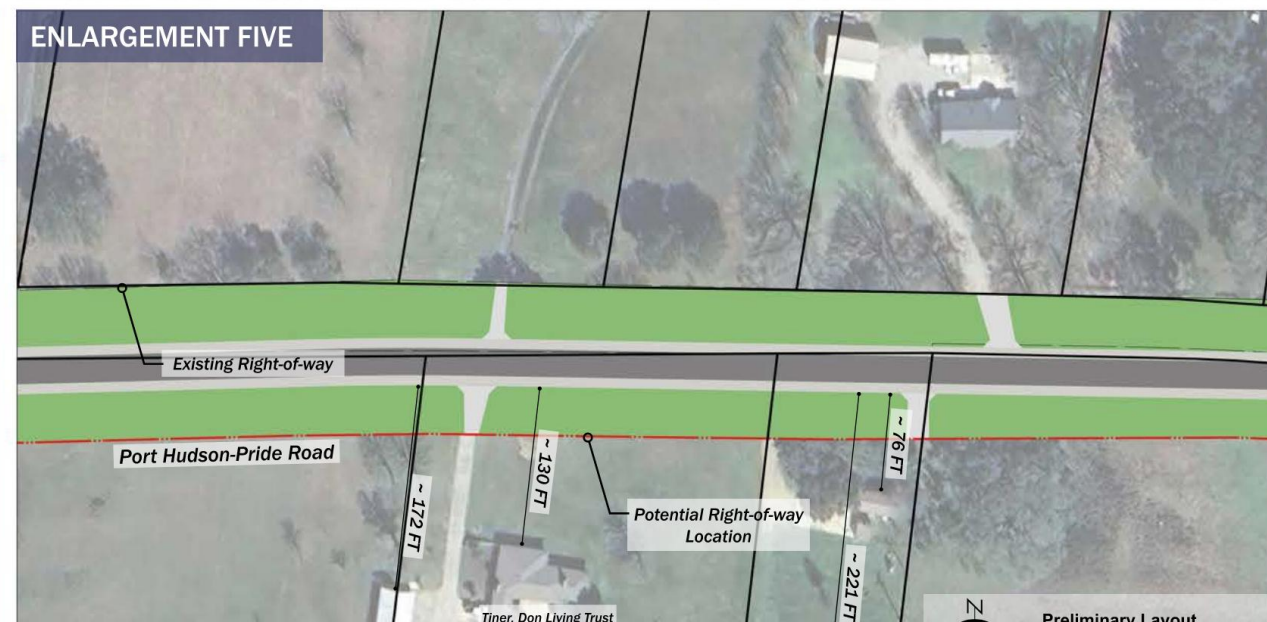
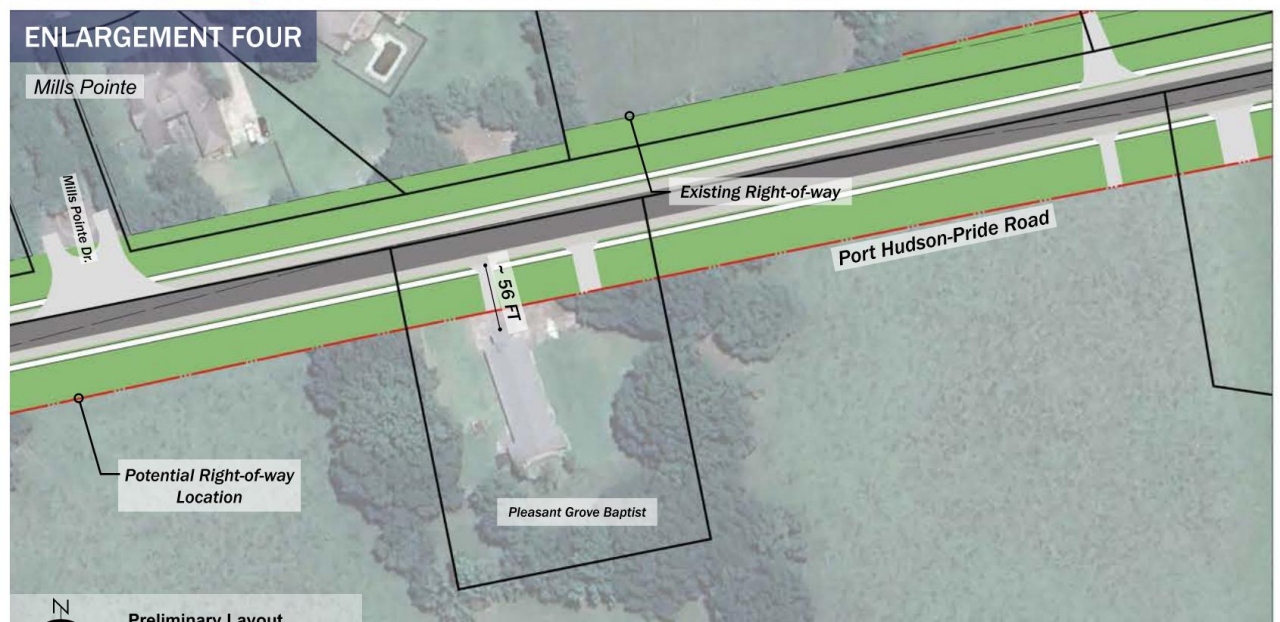
**Increased ROW takings for southern property owners.**

**Approximately 20 – 35' of additional R/W needed.**

**Total R/W needed will range from 15 – 75' from southern property owners.**

# Potential Property Impacts







# Potential Schedule w/ Alternative:

## Right-of-Way Acquisition:

2/2026 - 11/2026

**No Change**

## Utility Relocation:

~~8/2027 - 8/2028~~

**9/2026 - 8/2027**  
(12-month acceleration)

## Clearing & Grubbing:

~~12/2026 - 8/2027~~

**3/2026 - 9/2026**  
(12-month acceleration)

## Roadway Construction:

~~9/2028 - 9/2030~~

**1/2027 - 1/2029**  
(12-month acceleration)

**February 2026- January 2029**  
**Approx. 3 years to complete**



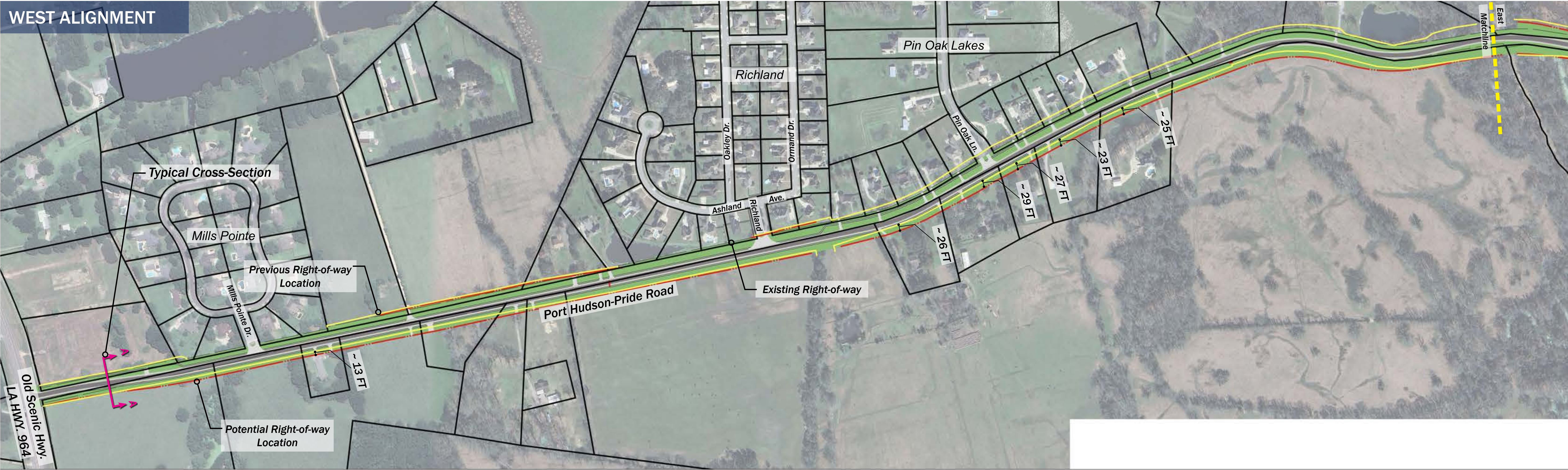
# QUESTIONS?

For more information visit  
[www.movebr.brla.gov](http://www.movebr.brla.gov)



PROPOSED IMPROVEMENT PLAN - OVERALL ALIGNMENT

WEST ALIGNMENT



EAST ALIGNMENT



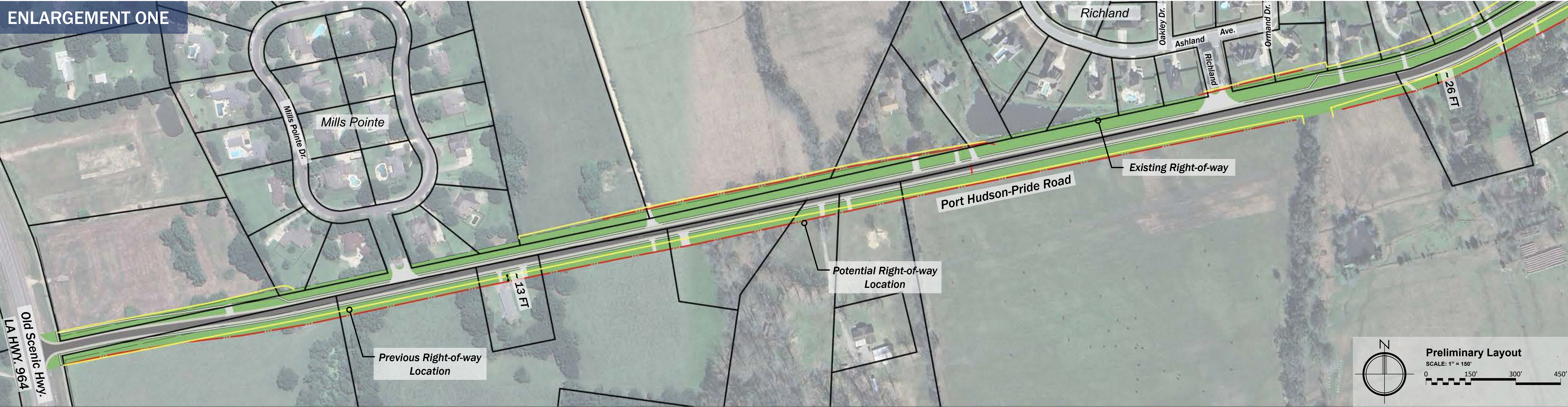
NOTE:  
ROADWAY IMPROVEMENTS ARE CONCEPTUAL ONLY AND SUBJECT TO CHANGE BASED  
UPON FINAL APPROVAL AND ENGINEERING DESIGN. MOVEBR IS NOT LIABLE FOR THE  
USE OR MISUSE, MISINTERPRETATION, OR ERRORS IN ANY CALCULATIONS DERIVED  
FROM ILLUSTRATED CONCEPTUAL IMPROVEMENT PLAN.



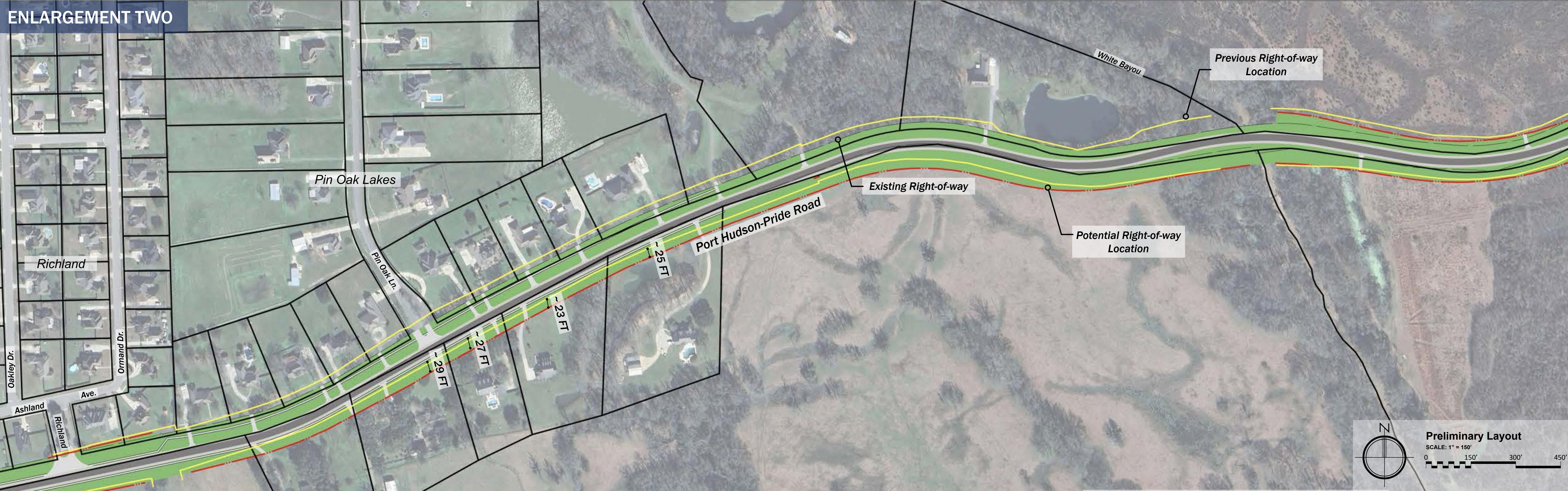


PROPOSED IMPROVEMENT PLAN - OVERALL ALIGNMENT

ENLARGEMENT ONE



ENLARGEMENT TWO



Port Hudson - Pride Road Improvements

COMMUNITY ENGAGEMENT MEETING

September 2025

NOTE:  
ROADWAY IMPROVEMENTS ARE CONCEPTUAL ONLY AND SUBJECT TO CHANGE BASED UPON FINAL APPROVAL AND ENGINEERING DESIGN. MOVEBR IS NOT LIABLE FOR THE USE OR MISUSE, MISINTERPRETATION, OR ERRORS IN ANY CALCULATIONS DERIVED FROM ILLUSTRATED CONCEPTUAL IMPROVEMENT PLAN.



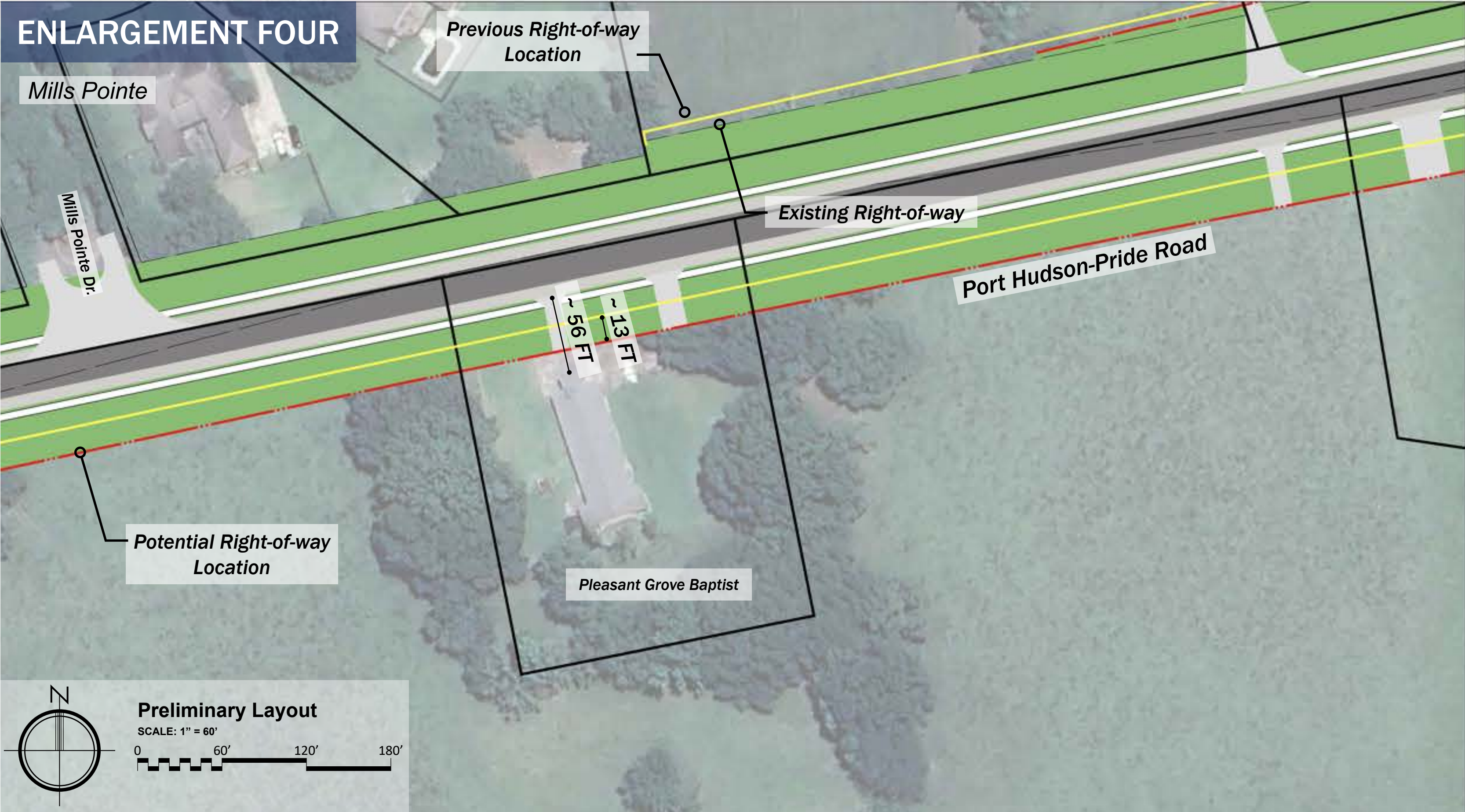


PROPOSED IMPROVEMENT PLAN - OVERALL ALIGNMENT

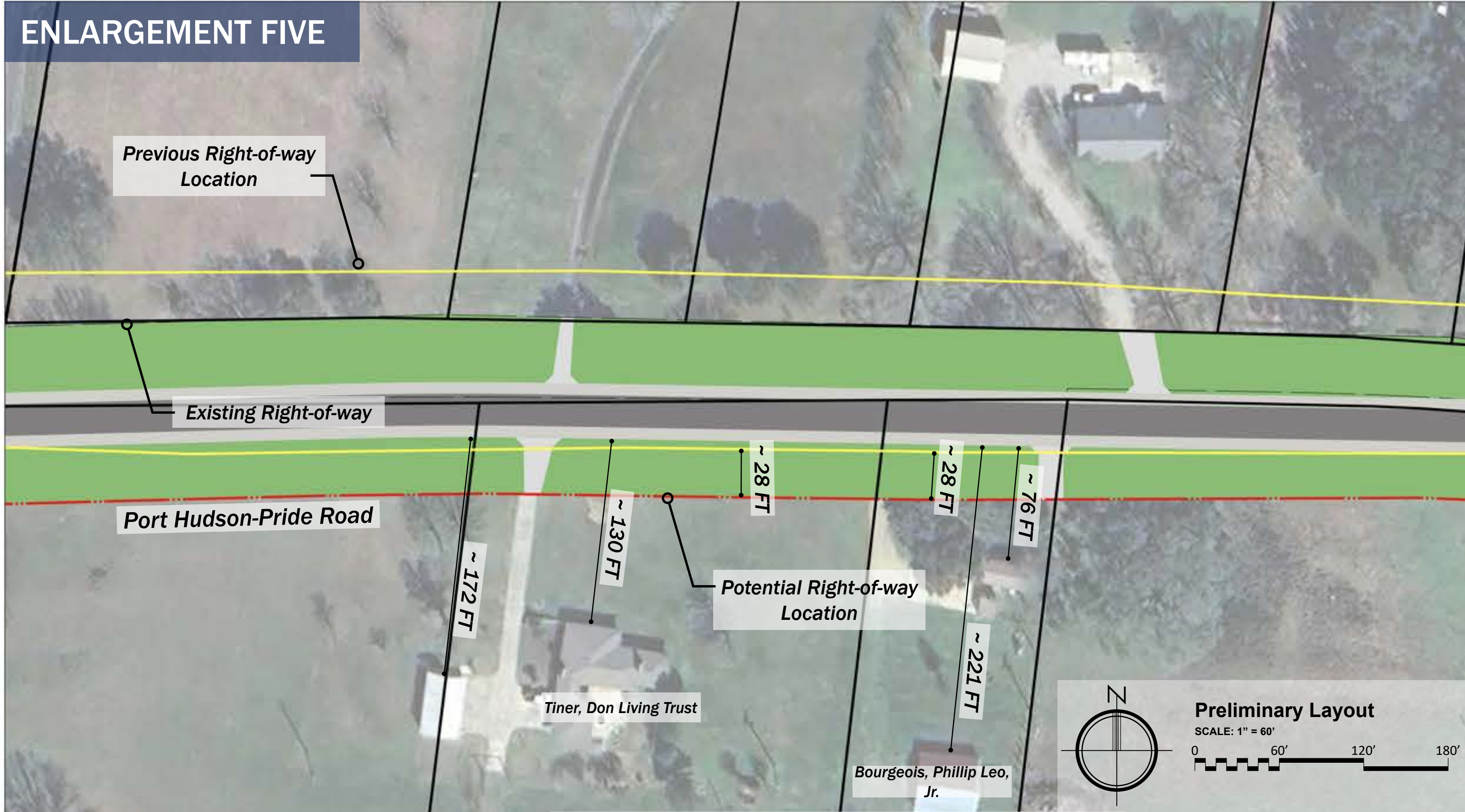
ENLARGEMENT THREE



ENLARGEMENT FOUR



ENLARGEMENT FIVE



Port Hudson - Pride Road Improvements

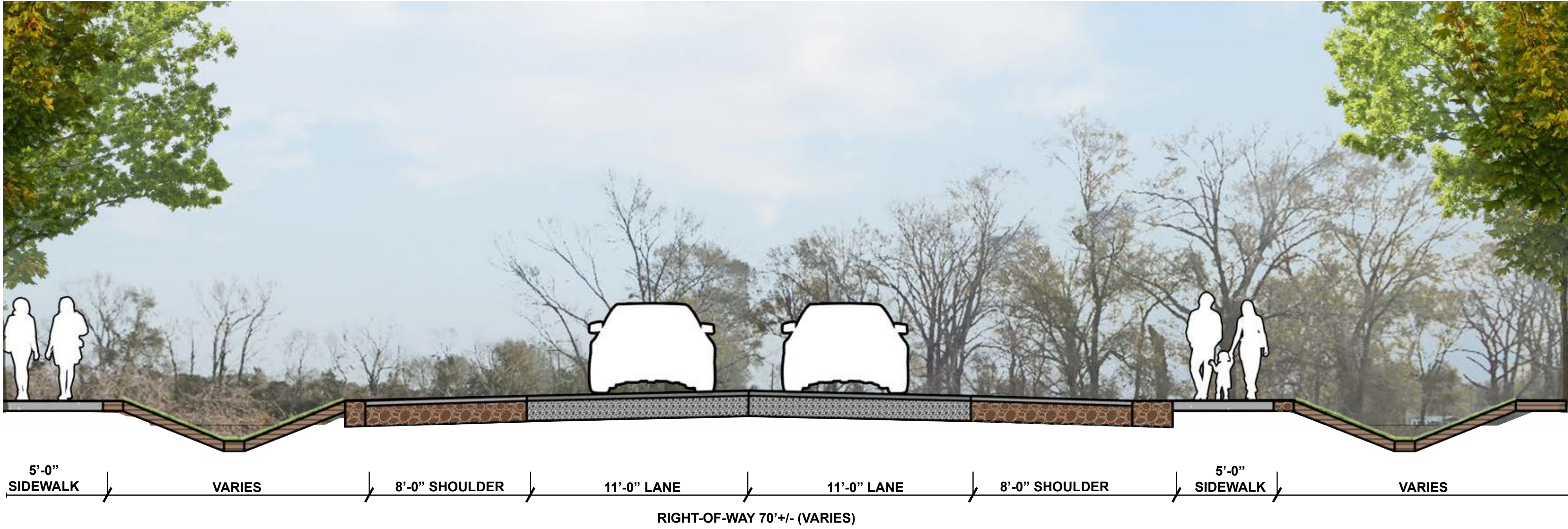
COMMUNITY ENGAGEMENT MEETING

September 2025

NOTE:  
ROADWAY IMPROVEMENTS ARE CONCEPTUAL ONLY AND SUBJECT TO CHANGE BASED UPON FINAL APPROVAL AND ENGINEERING DESIGN. MOVEBR IS NOT LIABLE FOR THE USE OR MISUSE, MISINTERPRETATION, OR ERRORS IN ANY CALCULATIONS DERIVED FROM ILLUSTRATED CONCEPTUAL IMPROVEMENT PLAN.

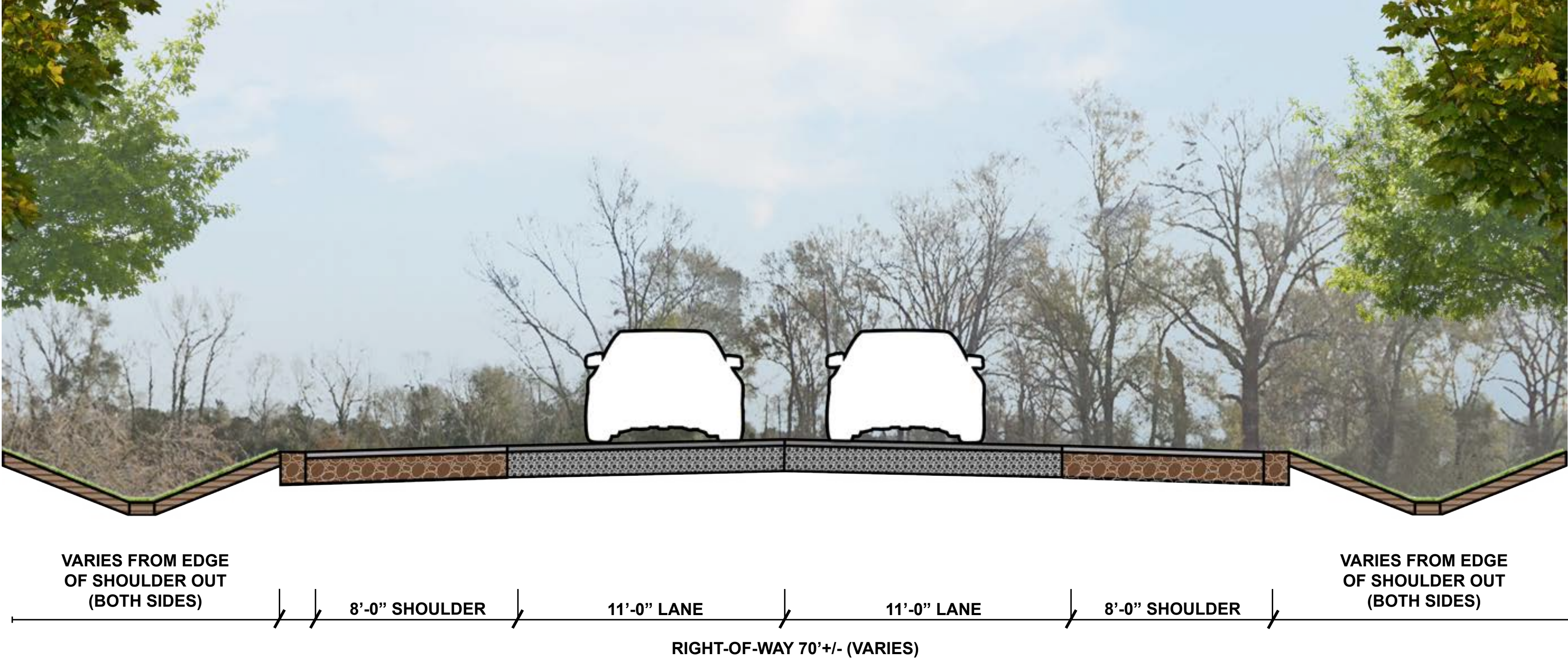






Typical Section AA - Proposed Improvements (LA 946 TO PIN OAK SUBDIVISION)

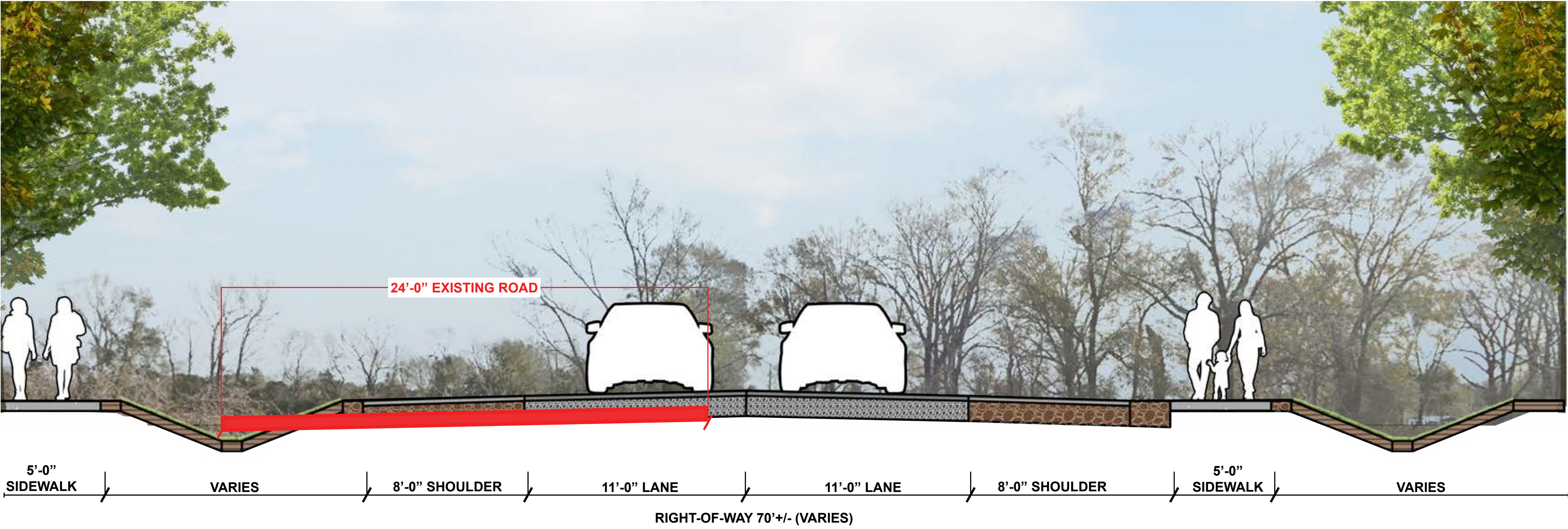
Not To Scale



Typical Section BB - Proposed Improvements (PIN OAK SUBDIVISION TO LA 19)

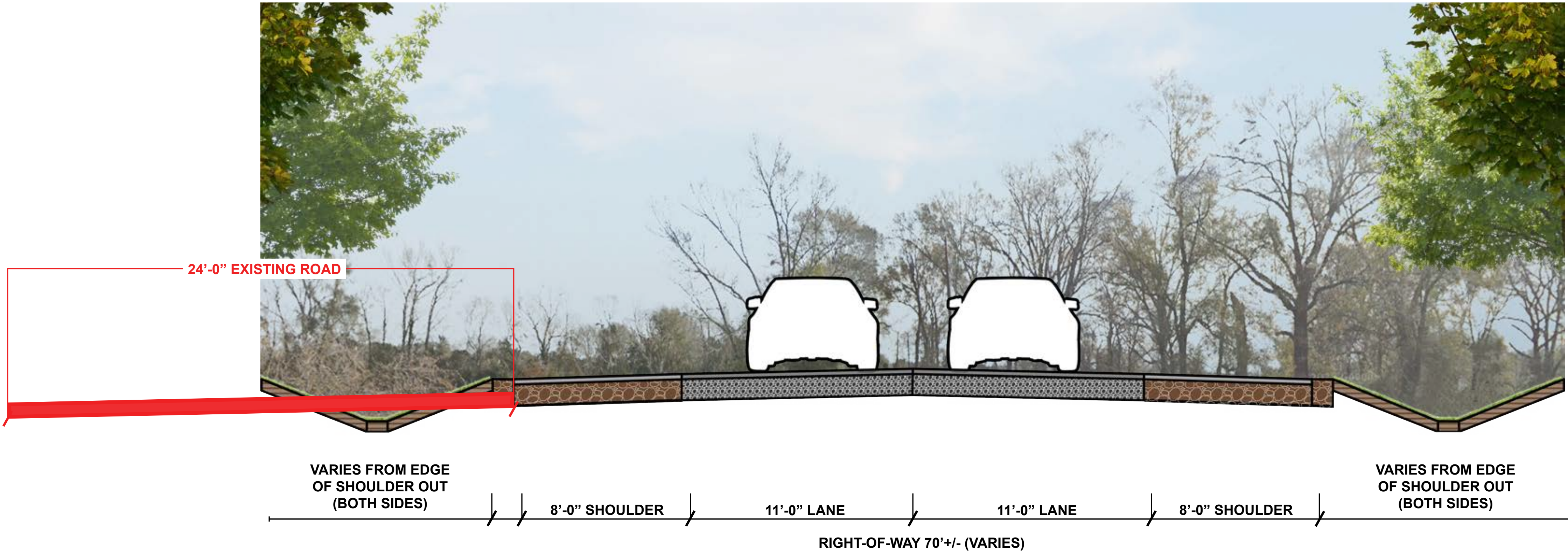
Not To Scale





Typical Section AA - Proposed Improvements (LA 946 TO PIN OAK SUBDIVISION)

Not To Scale



Typical Section BB - Proposed Improvements (PIN OAK SUBDIVISION TO LA 19)

Not To Scale