



Project Concept Report

This is a conceptual report. The project features and layouts will be further refined through planning and design phases.

Project: Flannery Road (Old
Hammond Highway – Florida
Boulevard)

Date: November 12, 2019

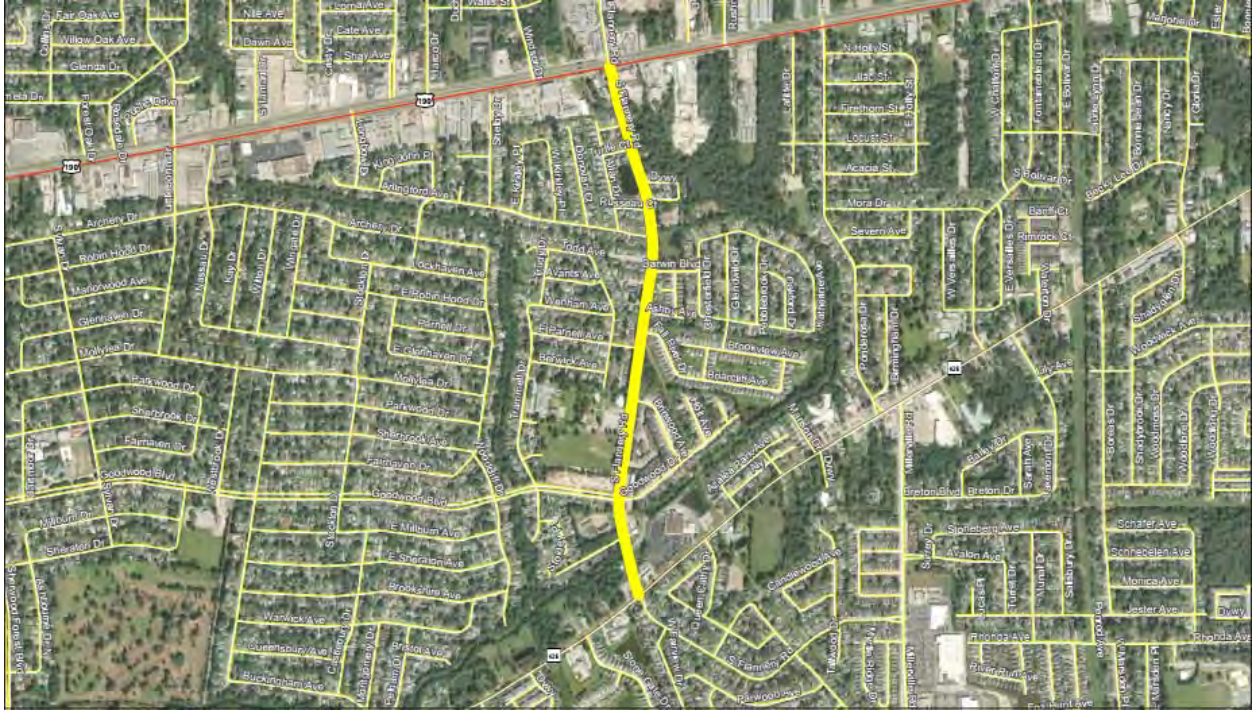


Image above represents broad outline of the project area as shown in 2018 MOVEBR tax plan proposition

PROJECT: Flannery Road (Old Hammond Highway – Florida Boulevard)

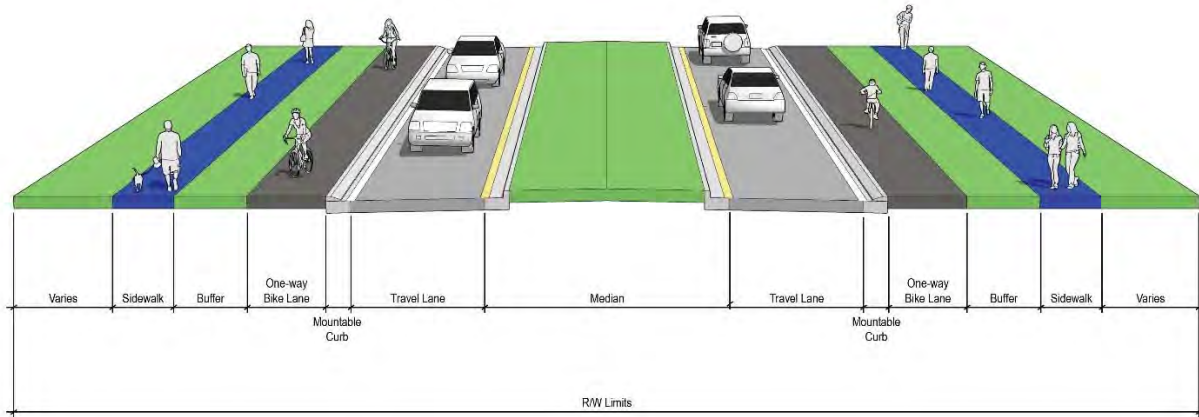
MOVEBR Program ID: 12
Project Length (miles): 0.9
Estimated Cost: \$17,000,000
Funded from Proposition: \$17,000,000

PROJECT OVERVIEW

The proposition scope of work for Flannery Road is safety, mobility, turning lanes and drainage. Flannery Road is currently two lanes with open ditches and no paved shoulders. Both sides of the roadway are developed. A BREC park is on the west side of the roadway near Old Hammond Highway. The corridor from Goodwood Boulevard to Old Hammond Highway is part of the MOVEBR Project No. 34, Old Hammond Highway Segment 1. Potential improvements could include a two-lane boulevard section with a median, separated bike facility and sidewalk along both sides of the roadway. A closed drainage system will also be considered along both sides.

TYPICAL SECTION

The graphic below provides a conceptual view of the potential proposed improvements that will be considered for the project.



PROJECT STATUS

This project is currently in the planning phase.

COMPLETE STREETS

The MOVEBR Program has developed design guidelines that aim to institutionalize the Complete Streets policy by accommodating people walking, biking or accessing transit, regardless of age and ability. Examples of complete streets policy elements are on-street bike lanes, wide shoulders, one-way cycle tracks, sidewalks, shared use paths, bus stop platforms, and crosswalks.

DRAINAGE AND GREEN INFRASTRUCTURE CONSIDERATIONS

Fill mitigation, which serves to maintain overall floodplain storage, will occur on this project. Stormwater detention areas tying to the drainage system are being developed in conjunction with each new MOVEBR project.

Among the drainage considerations for this specific project are the following:

A portion or all of this project is located within a Special Flood Hazard Area (SFHA).



This project location was in an area identified as an “estimated inundation area” from the 2016 floods. This map can be viewed at <https://www.arcgis.com/home/webmap/viewer.html?webmap=cb332217bdab4572b4930e02d6655f84>

Existing drainage for this project area utilizes an open (ditch) system, and the proposed drainage will utilize a closed (sub-surfaced) system.

Each project budget includes funding for green infrastructure to improve water quality and mitigate impacts of stormwater runoff. Examples of green infrastructure include but are not limited to porous pavement, creation or maintenance of a tree canopy, bioswales, planter boxes, rain gardens, and land conservation efforts.

ENVIRONMENTAL CONSIDERATIONS

Initial reviews support the following:

Minimal environmental considerations have been identified and must be reviewed and potentially addressed. This includes wetlands possibly requiring mitigation.

**Note that this is not exhaustive of possible future environmental considerations.*

TRAFFIC & SIGNALIZATION INTERSECTIONS

The Projected Average Daily Traffic (ADT) for year 2042 is 22,000 vehicles per day.

The current concept supports turn lanes at major intersections for budget purposes. Future traffic studies will identify locations for turn lanes, median openings and connections (driveways, side streets etc.).

Signal systems will be upgraded as a part of future projects if required due to future configurations.

UTILITIES CONSIDERATIONS

A preliminary assessment of the project area provides for the utilities listed below. Potential utility relocation costs will be included in the project budget if the infrastructure is located within the utility's own servitude.

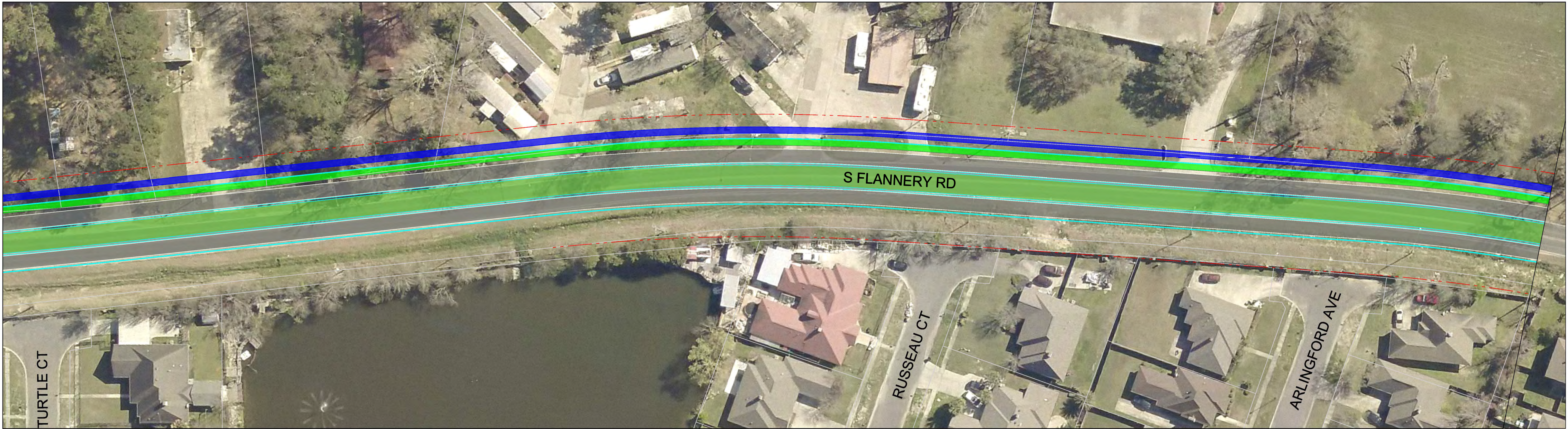
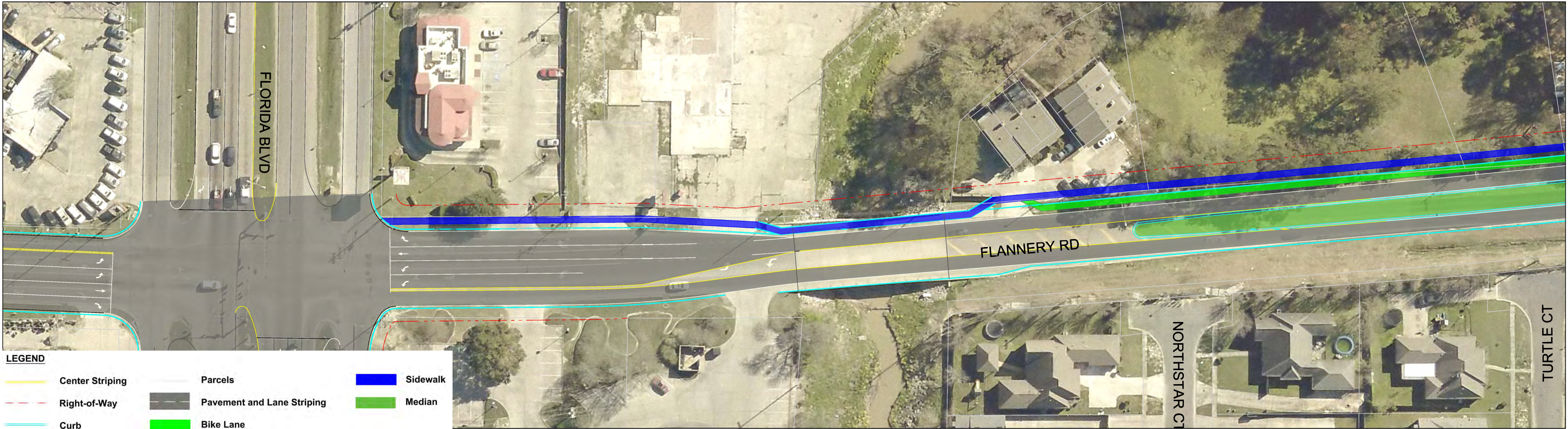
Possible Utilities	Existing	Adjust/Relocate
Underground Electric	No	No
Overhead Electric	Yes	Yes
Overhead Electric Transmission	Yes	Yes
Water	Yes	Yes
Sanitary Sewer	Yes	Yes
Communication	Yes	Yes
CATV	Yes	Yes
Gas Distribution	Yes	No
Pipeline	Yes	Yes

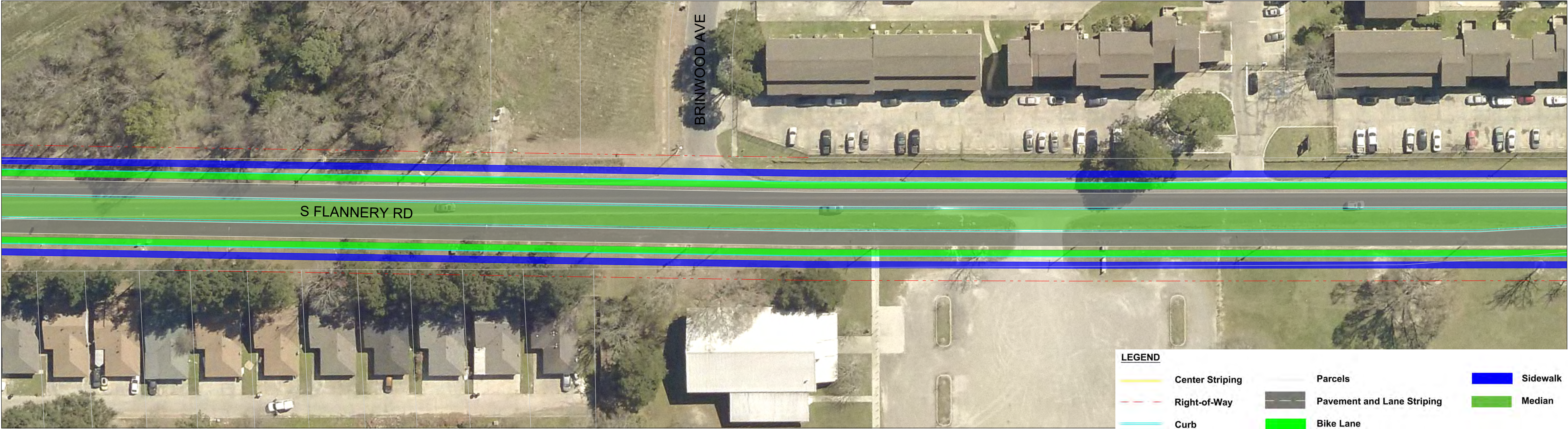
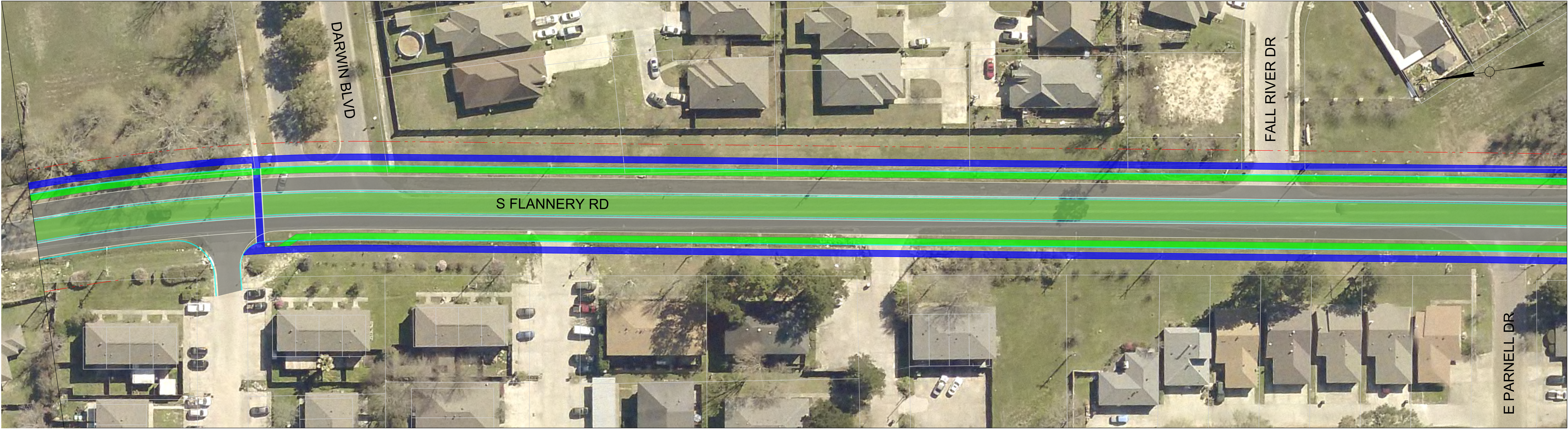
RIGHT OF WAY CONSIDERATIONS

Moderate residential or commercial right of way acquisitions are anticipated at this time.

PROJECT CONCEPT PLANS

The following pages provide a potential solution for the proposed project. The initial project features and layouts, shown within the concept plans, will be further refined through planning and design phases of the project.

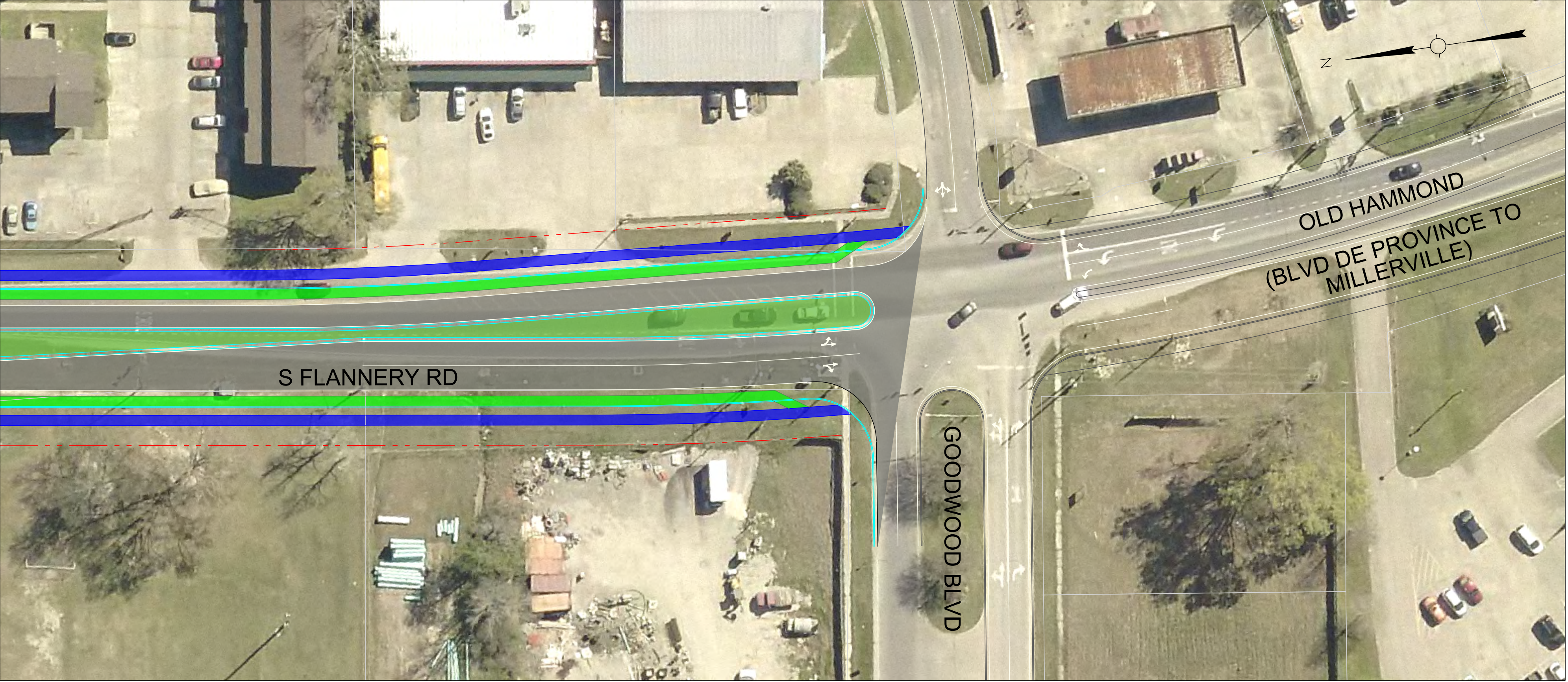




FLANNERY
(OLD HAMMOND HWY - FLORIDA)



Sheet No.
2 of 3
11/06/2019



LEGEND

 Center Striping

 Right-of-Way

 Curb

 Parcels

 Pavement and Lane Striping

 Bike Lane

 Sidewalk

 Median



FLANNERY
(OLD HAMMOND HWY - FLORIDA)



Sheet No.
3 of 3
11/06/2019