



Project Concept Report

This is a conceptual report. The project features and layouts will be further refined through planning and design phases.

Project: Jefferson Highway at
Corporate Boulevard Intersection

Date: November 12, 2019

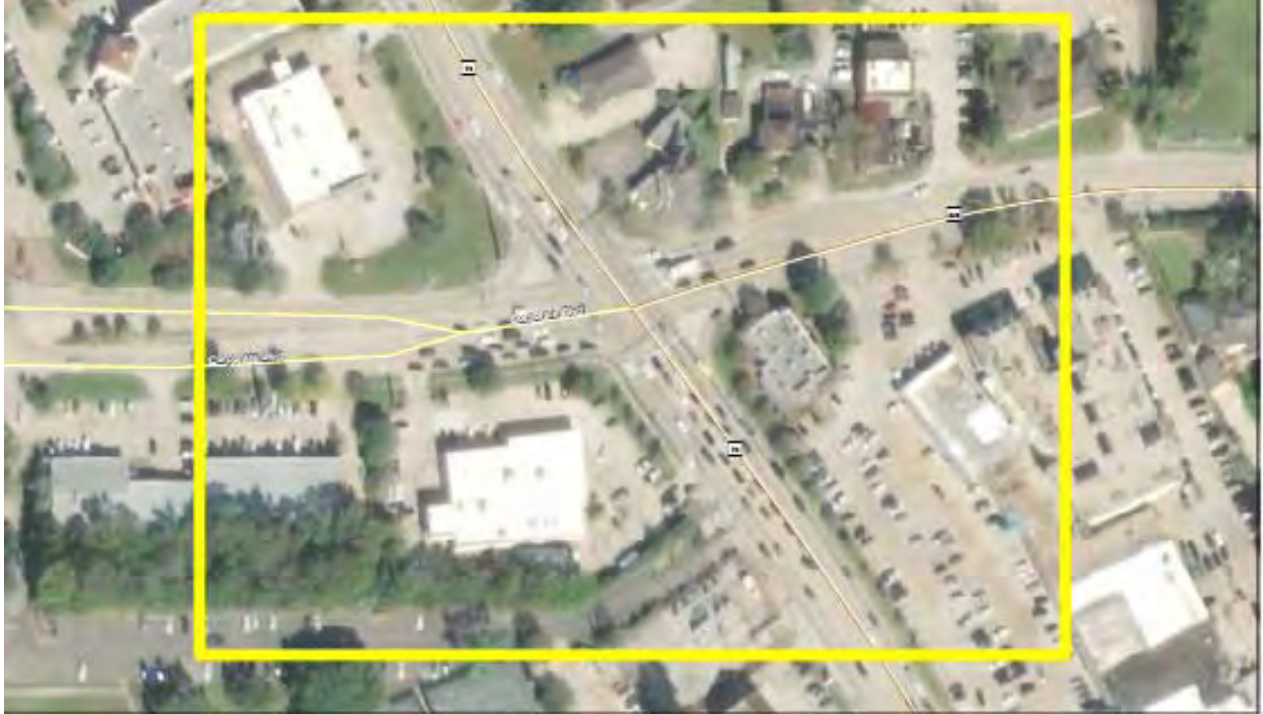


Image above represents broad outline of the project area as shown in 2018 MOVEBR tax plan proposition

PROJECT: Jefferson Highway at Corporate Boulevard Intersection

MOVEBR Program ID: 27
Project Length (miles): N/A
Estimated Cost: \$2,000,000
Funded from Proposition: \$2,000,000

PROJECT OVERVIEW

The proposition scope of work includes turning lane extension. Jefferson Highway is a five-lane highway intersecting Corporate Boulevard (a four-lane roadway) and Old Hammond Highway (a five-lane roadway). The proposed improvements will provide additional storage length and additional capacity in the intersection. Sidewalk connections will be made to transit stops and crossing provided for safe access.



PROJECT STATUS

This project is currently in the planning phase.

COMPLETE STREETS

The MOVEBR Program has developed design guidelines that aim to institutionalize the Complete Streets policy by accommodating people walking, biking or accessing transit, regardless of age and ability. Examples of complete streets policy elements are on-street bike lanes, wide shoulders, one-way cycle tracks, sidewalks, shared use paths, bus stop platforms, and crosswalks.

DRAINAGE AND GREEN INFRASTRUCTURE CONSIDERATIONS

Fill mitigation, which serves to maintain overall floodplain storage, will occur on this project. Stormwater detention areas tying to the drainage system are being developed in conjunction with each new MOVEBR project.

Among the drainage considerations for this specific project are the following:

This project is located entirely in flood zone X, which is outside of the Special Flood Hazard Area (SFHA).

This project location is NOT in an area identified as an “estimated inundation area” from the 2016 floods. This map can be viewed at <https://www.arcgis.com/home/webmap/viewer.html?webmap=cb332217bdab4572b4930e02d6655f84>

Existing drainage for this project area utilizes a closed (sub-surfaced) system and will continue to do so.

Each project budget includes funding for green infrastructure to improve water quality and mitigate impacts of stormwater runoff. Examples of green infrastructure include but are not limited to porous pavement, creation or maintenance of a tree canopy, bioswales, planter boxes, rain gardens, and land conservation efforts.

ENVIRONMENTAL CONSIDERATIONS

Initial reviews support the following:

No environmental considerations are known at this time.

**Note that this is not exhaustive of possible future environmental considerations.*

TRAFFIC & SIGNALIZATION INTERSECTIONS

The Projected Average Daily Traffic (ADT) for year 2042 is 63,000 vehicles per day.

The current concept supports turn lanes at major intersections for budget purposes. Future traffic studies will identify locations for turn lanes, median openings and connections (driveways, side streets etc.).

Signal systems will be upgraded as a part of future projects if required due to future configurations.

UTILITIES CONSIDERATIONS

A preliminary assessment of the project area provides for the utilities listed below. Potential utility relocation costs will be included in the project budget if the infrastructure is located within the utility’s own servitude.

| Possible Utilities | Existing | Adjust/Relocate |
|--------------------------------|----------|-----------------|
| Underground Electric | No | No |
| Overhead Electric | Yes | Yes |
| Overhead Electric Transmission | Yes | No |
| Water | Yes | Yes |
| Sanitary Sewer | Yes | Yes |
| Communication | Yes | Yes |
| CATV | Yes | Yes |
| Gas Distribution | No | No |
| Pipeline | No | No |



RIGHT OF WAY CONSIDERATIONS

Minimal residential or commercial right of way acquisitions are anticipated at this time.

PROJECT CONCEPT PLANS

The following pages provide a potential solution for the proposed project. The initial project features and layouts, shown within the concept plans, will be further refined through planning and design phases of the project.



