



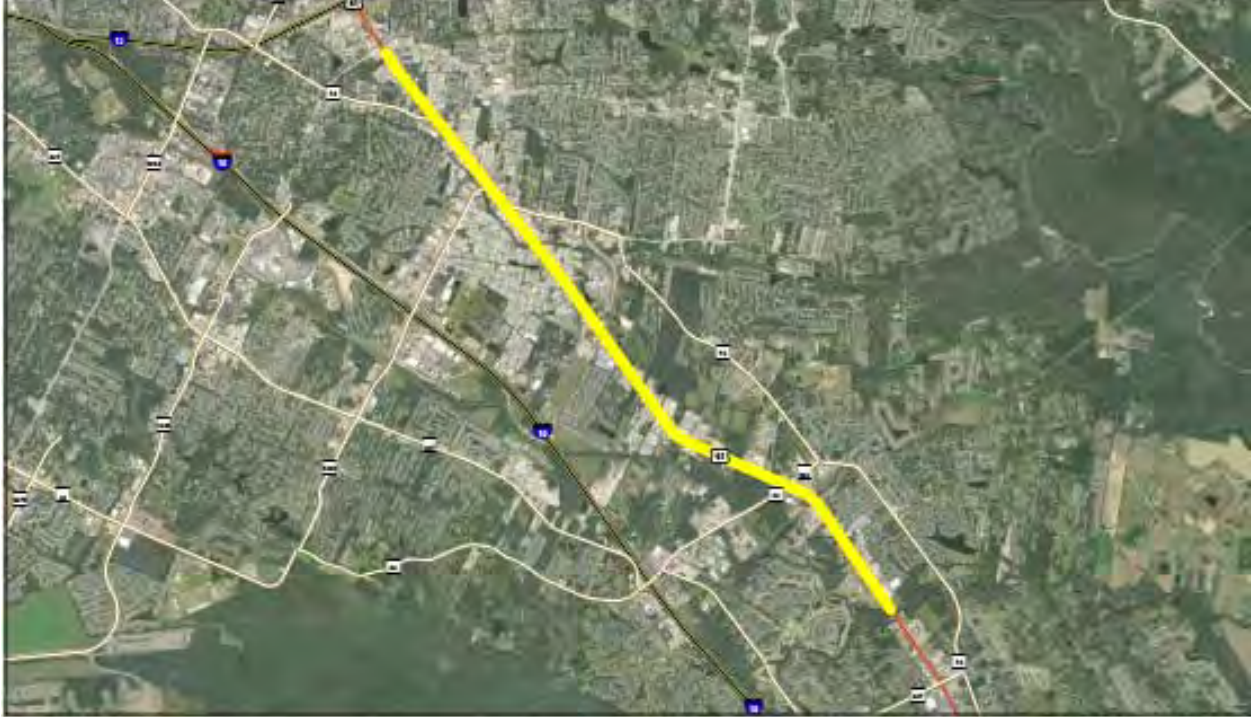
## Project Concept Report

*This is a conceptual report. The project features and layouts will be further refined through planning and design phases.*

Project: Airline Highway, South (Parish Line – Bluebonnet Boulevard)

Date: November 12, 2019

---



*Image above represents broad outline of the project area as shown in 2018 MOVEBR tax plan proposition*

**PROJECT: Airline Highway, South (Parish Line – Bluebonnet Boulevard)**

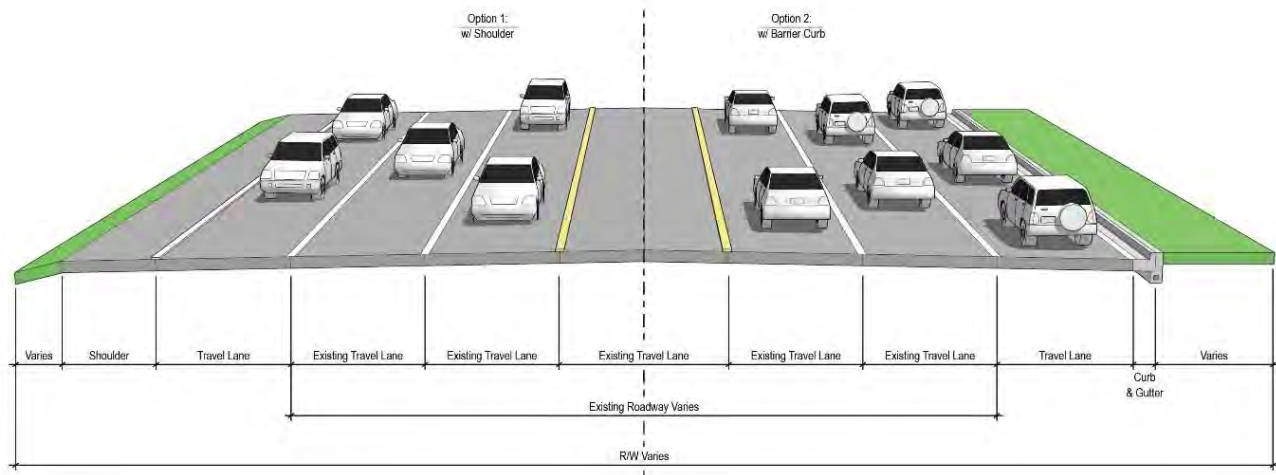
MOVEBR Program ID: 38  
Project Length (miles): 7.3  
Estimated Cost: \$51,000,000  
Funded from Proposition: \$25,000,000

**PROJECT OVERVIEW**

The proposition scope of work includes additional lane capacity. Airline Highway from the Parish line to Bluebonnet Boulevard is generally a four-lane, divided roadway with wide shoulders. The corridor is commercial in nature with no pedestrian accommodations. The proposed project is to add an additional lane in each direction for the length of the corridor. Depending on the land use, geometry and right of way available, either shoulder or curb and gutter will be provided.

## TYPICAL SECTION

The graphic below provides a conceptual view of the potential proposed improvements that will be considered for the project.



## PROJECT STATUS

This project is currently in the planning phase.

## COMPLETE STREETS

The MOVEBR Program has developed design guidelines that aim to institutionalize the Complete Streets policy by accommodating people walking, biking or accessing transit, regardless of age and ability. Examples of complete streets policy elements are on-street bike lanes, wide shoulders, one-way cycle tracks, sidewalks, shared use paths, bus stop platforms, and crosswalks.

## DRAINAGE AND GREEN INFRASTRUCTURE CONSIDERATIONS

Fill mitigation, which serves to maintain overall floodplain storage, will occur on this project. Stormwater detention areas tying to the drainage system are being developed in conjunction with each new MOVEBR project.

Among the drainage considerations for this specific project are the following:

A portion or all of this project is located within a Special Flood Hazard Area (SFHA).



This project location was in an area identified as an “estimated inundation area” from the 2016 floods. This map can be viewed at <https://www.arcgis.com/home/webmap/viewer.html?webmap=cb332217bdab4572b4930e02d6655f84>

Existing drainage for this project area utilizes an open (ditch) system, and the proposed drainage may utilize both closed (sub-surfaced) and open (ditch) systems.

Each project budget includes funding for green infrastructure to improve water quality and mitigate impacts of stormwater runoff. Examples of green infrastructure include but are not limited to porous pavement, creation or maintenance of a tree canopy, bioswales, planter boxes, rain gardens, and land conservation efforts.

## ENVIRONMENTAL CONSIDERATIONS

Initial reviews support the following:

Minimal environmental considerations have been identified and must be reviewed and potentially addressed. This includes scenic stream considerations.

*\*Note that this is not exhaustive of possible future environmental considerations.*

## TRAFFIC & SIGNALIZATION INTERSECTIONS

The Projected Average Daily Traffic (ADT) for year 2042 is 108,000 vehicles per day.

The current concept supports turn lanes at major intersections for budget purposes. Future traffic studies will identify locations for turn lanes, median openings and connections (driveways, side streets etc.).

Signal systems will be upgraded as a part of future projects if required due to future configurations.

**UTILITIES CONSIDERATIONS**

A preliminary assessment of the project area provides for the utilities listed below. Potential utility relocation costs will be included in the project budget if the infrastructure is located within the utility’s own servitude.

Possible Utilities	Existing	Adjust/Relocate
Underground Electric	No	No
Overhead Electric	Yes	No
Overhead Electric Transmission	Yes	No
Water	Yes	Yes
Sanitary Sewer	Yes	Yes
Communication	Yes	Yes
CATV	Yes	Yes
Gas Distribution	Yes	Yes
Pipeline	Yes	No

**RIGHT OF WAY CONSIDERATIONS**

Minimal residential or commercial right of way acquisitions are anticipated at this time.

**PROJECT CONCEPT PLANS**

The following pages provide a potential solution for the proposed project. The initial project features and layouts, shown within the concept plans, will be further refined through planning and design phases of the project.







# AIRLINE SOUTH (PARISH LINE TO BLUEBONNET)

## LEGEND

-  Parcels
-  Pavement and Lane Striping
-  Shoulder



Sheet No.

1 of 13

11/06/2019





AIRLINE SOUTH  
(PARISH LINE TO BLUEBONNET)



LEGEND	
	Parcels
	Pavement and Lane Striping
	Shoulder



Sheet No.
2 of 13
11/06/2019





**LEGEND**

- Parcels
- Curb
- Pavement and Lane Striping
- Shoulder



# AIRLINE SOUTH (PARISH LINE TO BLUEBONNET)

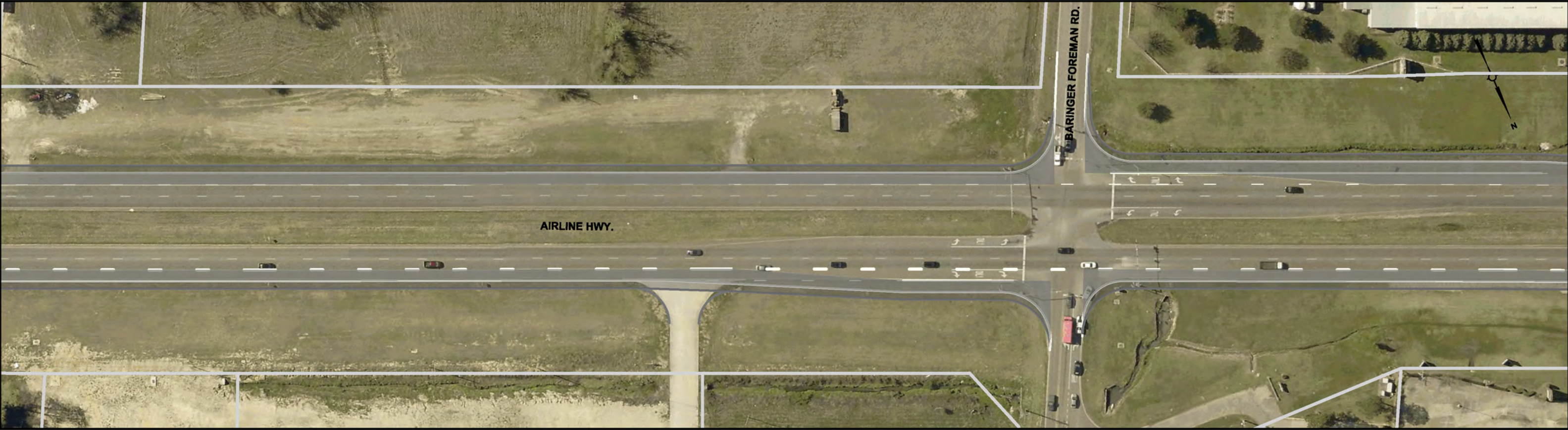


Sheet No.

3 of 13

11/06/2019





AIRLINE SOUTH  
(PARISH LINE TO BLUEBONNET)

LEGEND

- Parcels
- Pavement and Lane Striping
- Shoulder

**BR**  
CITY OF BATON ROUGE  
PARISH OF EAST BATON ROUGE

Sheet No.  
4 of 13  
11/06/2019





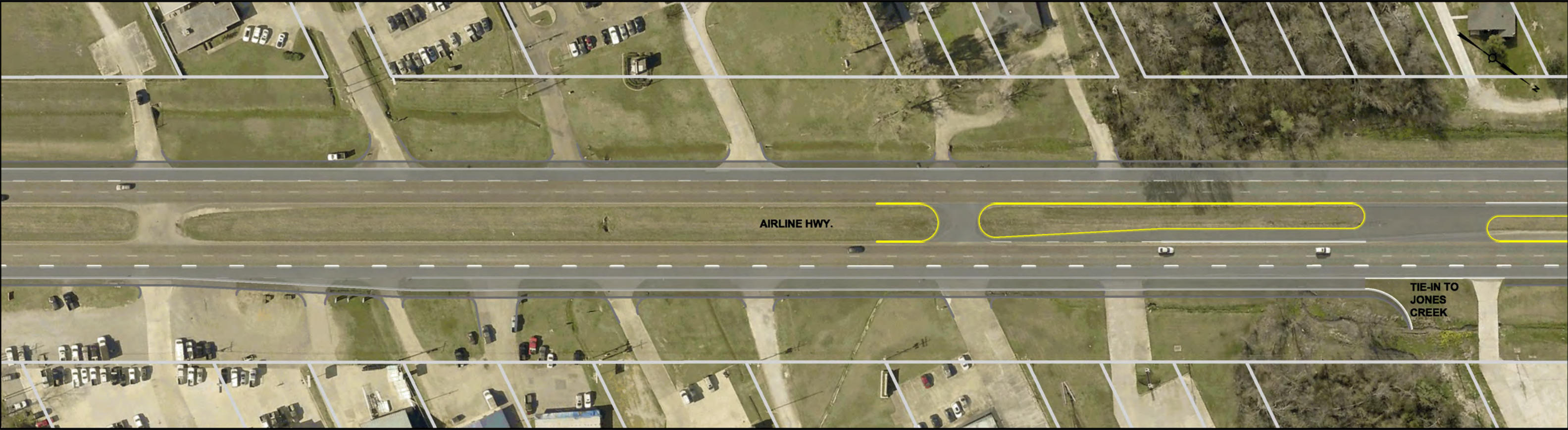


AIRLINE SOUTH  
(PARISH LINE TO BLUEBONNET)

LEGEND	
	Parcels
	Pavement and Lane Striping
	Shoulder







AIRLINE SOUTH  
(PARISH LINE TO BLUEBONNET)

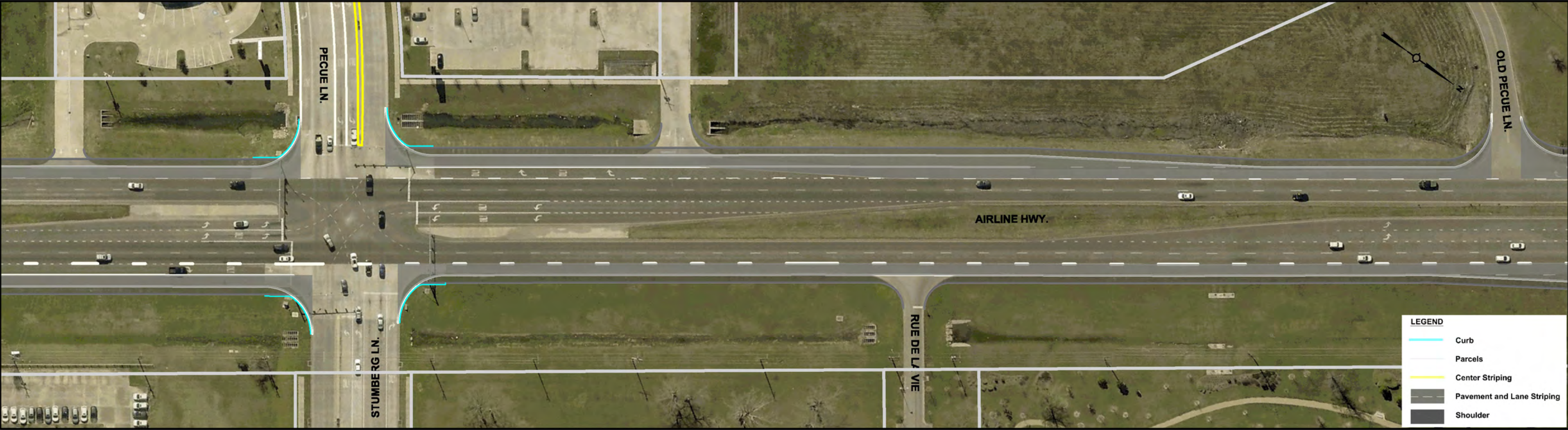


Sheet No.

6 of 13

11/06/2019









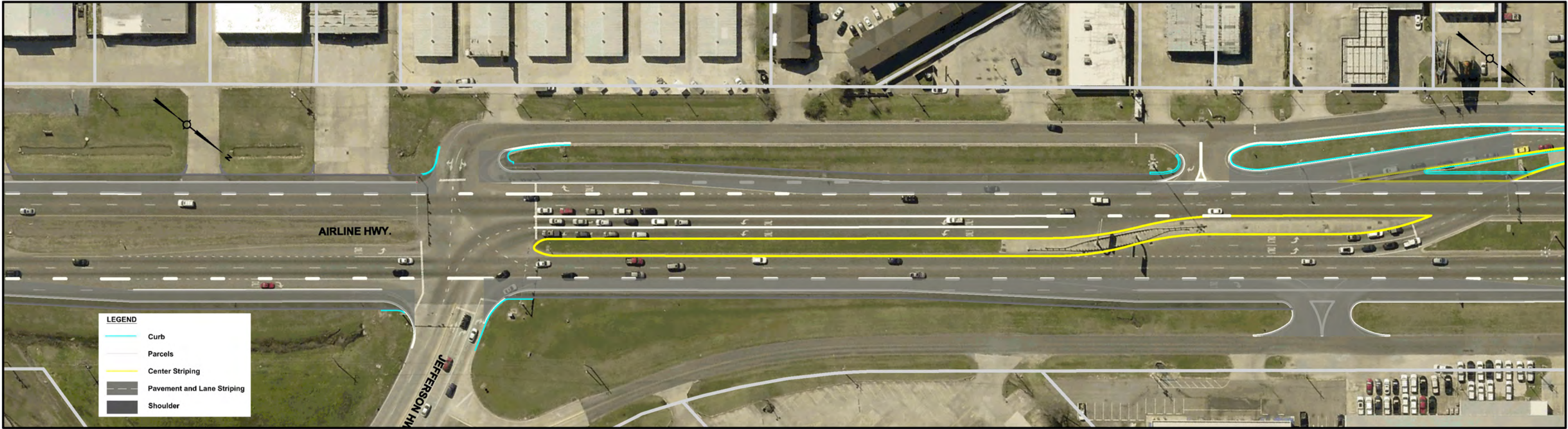
**LEGEND**

- Parcels
- Center Striping
- Pavement and Lane Striping
- Shoulder

AIRLINE SOUTH  
(PARISH LINE TO BLUEBONNET)



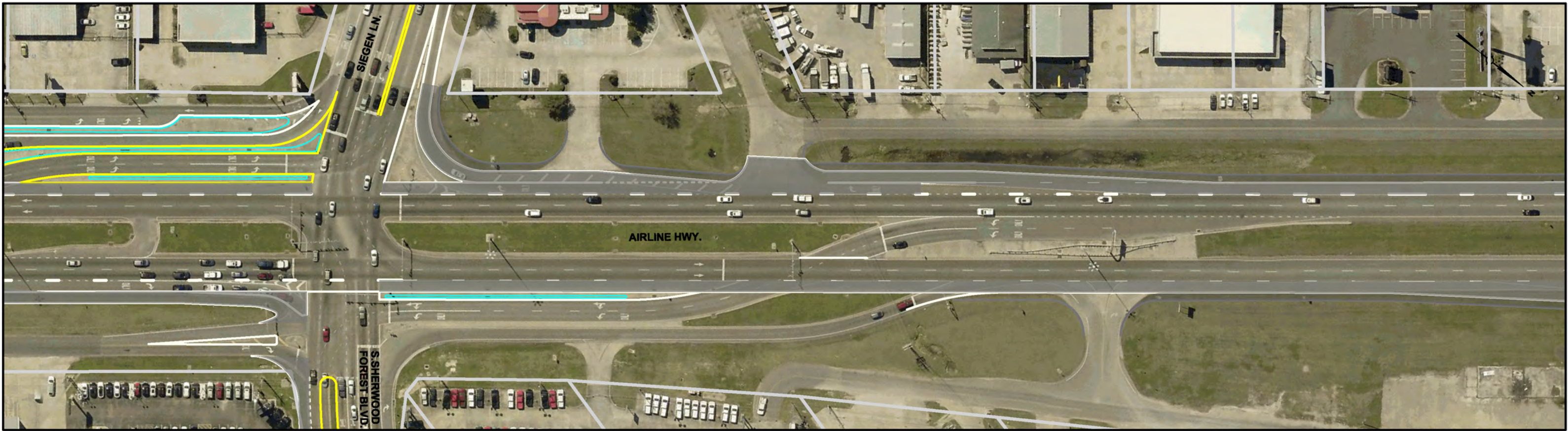




AIRLINE SOUTH  
(PARISH LINE TO BLUEBONNET)







# AIRLINE SOUTH (PARISH LINE TO BLUEBONNET)



Sheet No.  
10 of 13  
11/06/2019





AIRLINE SOUTH  
(PARISH LINE TO BLUEBONNET)

LEGEND	
	Parcels
	Pavement and Lane Striping
	Shoulder

  
CITY OF BATON ROUGE  
PARISH OF EAST BATON ROUGE

Sheet No.
11 of 13
11/06/2019







AIRLINE SOUTH  
(PARISH LINE TO BLUEBONNET)



Sheet No.

12 of 13

11/06/2019





**LEGEND**

- Parcels
- Curb
- Pavement and Lane Striping
- Shoulder

AIRLINE SOUTH  
(PARISH LINE TO BLUEBONNET)

