



Project Concept Report

This is a conceptual report. The project features and layouts will be further refined through planning and design phases.

Project: 72nd Ave. Sidewalks (Scenic Hwy. to I-110)

Date: November 21, 2019



Project: 72nd Ave. Sidewalks (Scenic Hwy. to I-110)

PROJECT OVERVIEW

Current Condition:	Two-lane undivided with sidewalks on both sides
Proposed Condition:	Two-lane undivided with standard sidewalks on both sides

PROJECT STATUS

This project is currently in the design phase.

COMPLETE STREETS

The MOVEBR Program has developed design guidelines that aim to institutionalize the Complete Streets policy by accommodating pedestrians, bicyclists or transit, regardless of age and ability. For the purposes of this project, pedestrian mobility is the primary focus.

DRAINAGE AND GREEN INFRASTRUCTURE CONSIDERATIONS

Among the drainage considerations for this specific project are the following:

This project is located entirely in flood zone X, which is outside of the Special Flood Hazard Area (SFHA).

This project location is not in an area identified as an “estimated inundation area” from the 2016 floods. This map can be viewed at <https://www.arcgis.com/home/webmap/viewer.html?webmap=cb332217bdab4572b4930e02d6655f84>

Existing drainage for this project area utilizes a closed (sub-surfaced) system.

The project budget will consider funding for green infrastructure to improve water quality and mitigate impacts of stormwater runoff. Examples of green infrastructure include but are not limited to porous pavement, creation or maintenance of a tree canopy, bioswales, planter boxes, rain gardens, and land conservation efforts.

ENVIRONMENTAL CONSIDERATIONS

Initial reviews support the following;

Minimal environmental considerations have been identified and must be reviewed and potentially addressed.

**Note that this is not exhaustive of possible future environmental considerations.*

TRAFFIC & SIGNALIZATION INTERSECTIONS

The Projected Average Daily Traffic (ADT) for year 2042 is 1,000.

UTILITIES CONSIDERATIONS

A preliminary assessment of the project area provides for the utilities listed below. Potential utility relocation costs will be included in the project budget if the infrastructure is located within the utility's own servitude.

Possible Utilities	Existing	Adjust/Relocate
Overhead Electric	●	TBD
Water	●	TBD
Sanitary Sewer	●	TBD
Telephone	●	TBD
CATV/Fiber	●	TBD
Gas Distribution	●	TBD
Gas HP Pipeline	●	TBD

RIGHT OF WAY CONSIDERATIONS








Minimal residential or commercial right of way acquisitions are anticipated at this time.

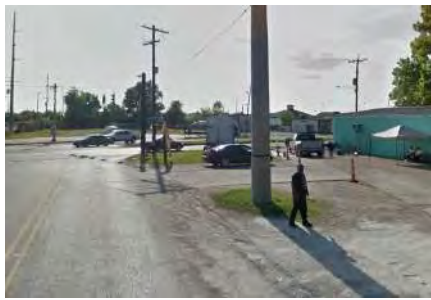
PROJECT CONCEPT PLANS

The following pages provide a potential solution(s) for the proposed project. The project features and layouts, shown within the typical section(s) and concept plans, will be further refined through planning and design phases of the project.



LEGEND:

	CURRENT BUS STOP		REQ'D ADA RAMP W/ TRUNCATED DOME INSET
	EDGE OF PAVEMENT		EXIST. S/W
	LOT LINES		REQ'D S/W REMOVAL
	REQ'D NEW S/W		



VIEW: W



VIEW: E



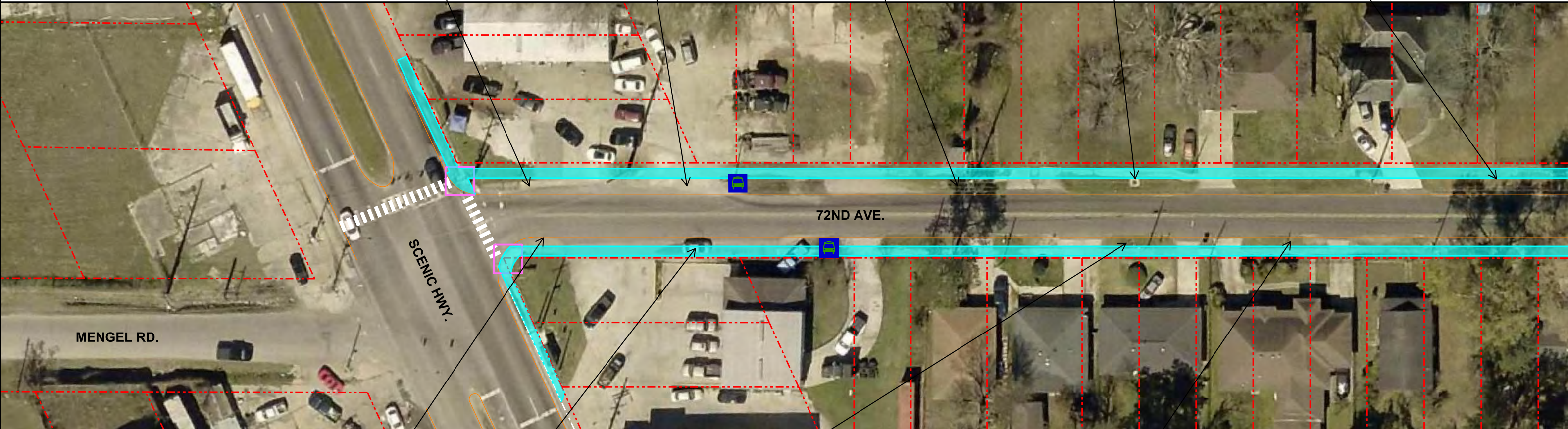
VIEW: E



VIEW: W



VIEW: E



VIEW: W



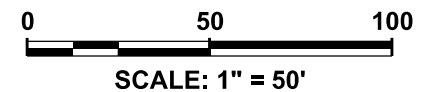
VIEW: W



VIEW: E



VIEW: E



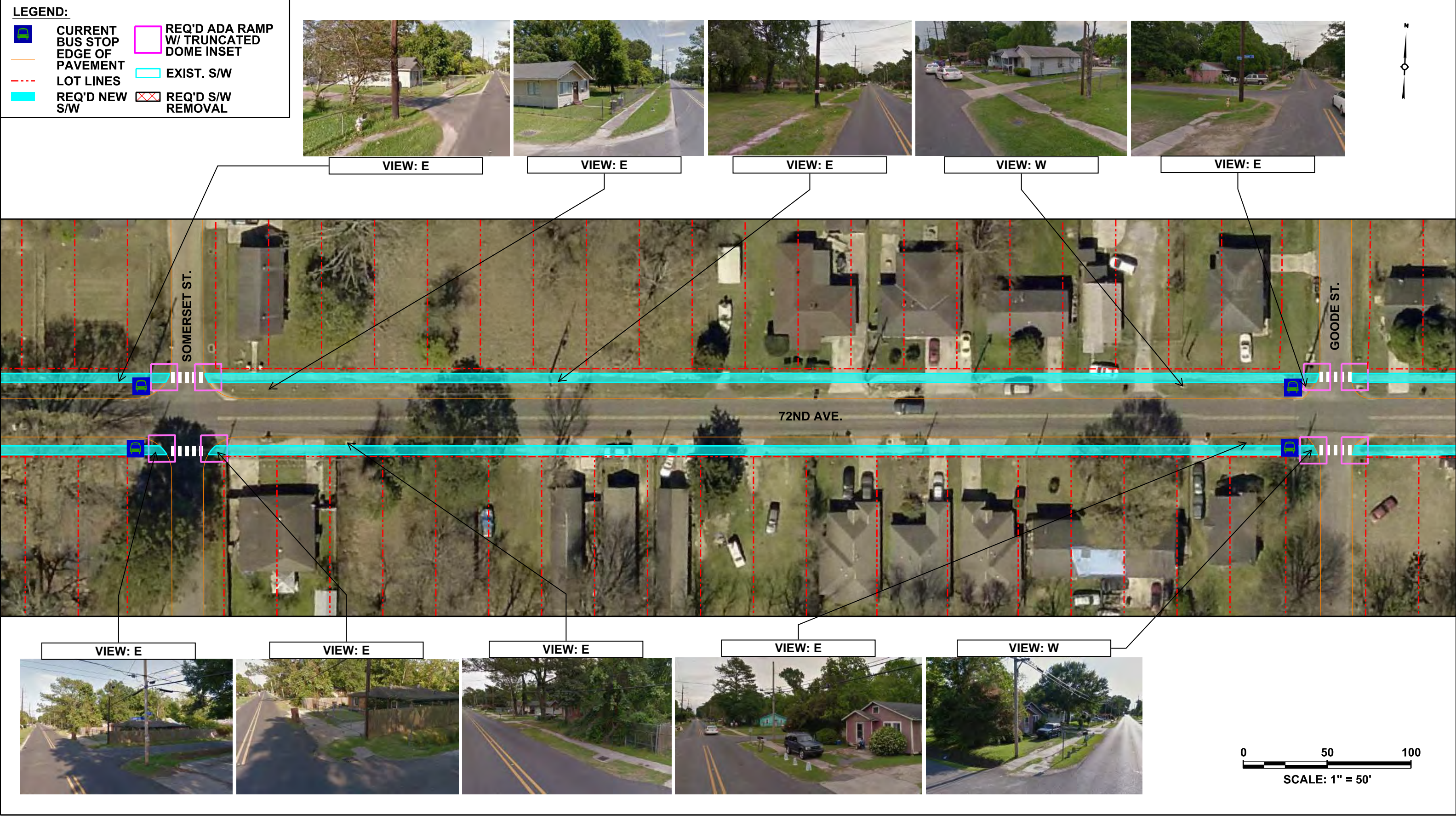
72ND AVENUE SIDEWALKS (SCENIC HWY. TO I-110)



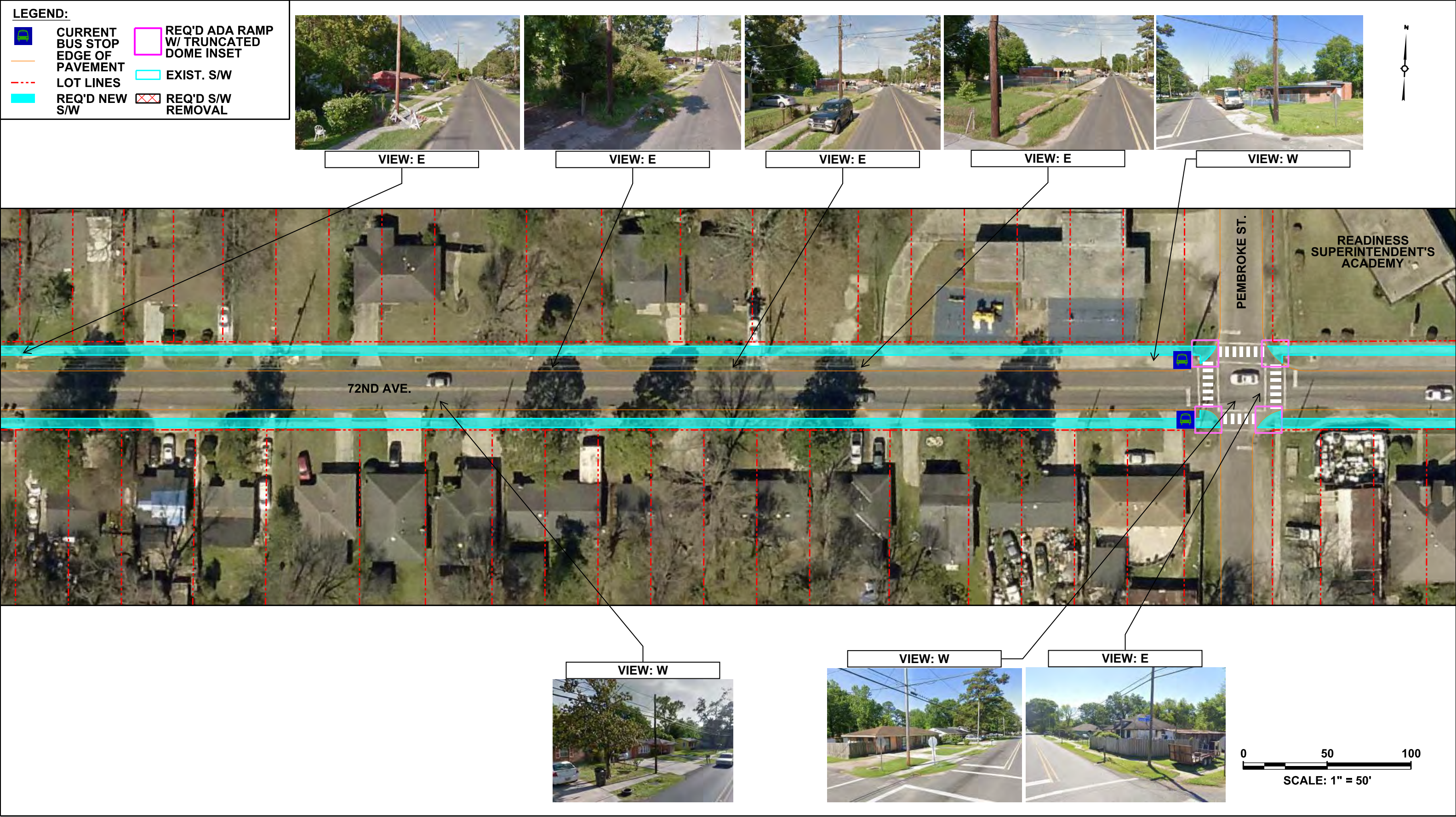
Sheet No.

1 of 7








11/21/19



72ND AVENUE SIDEWALKS
(SCENIC HWY. TO I-110)



LEGEND:

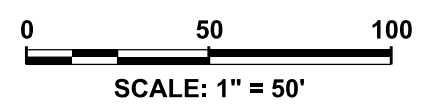
	CURRENT BUS STOP		REQ'D ADA RAMP W/ TRUNCATED DOME INSET
	EDGE OF PAVEMENT		EXIST. S/W
	LOT LINES		REQ'D S/W REMOVAL
	REQ'D NEW S/W		



VIEW: E VIEW: E VIEW: W VIEW: E VIEW: W







VIEW: E VIEW: E VIEW: E VIEW: E VIEW: E






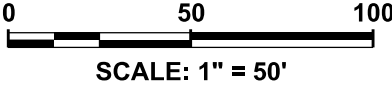
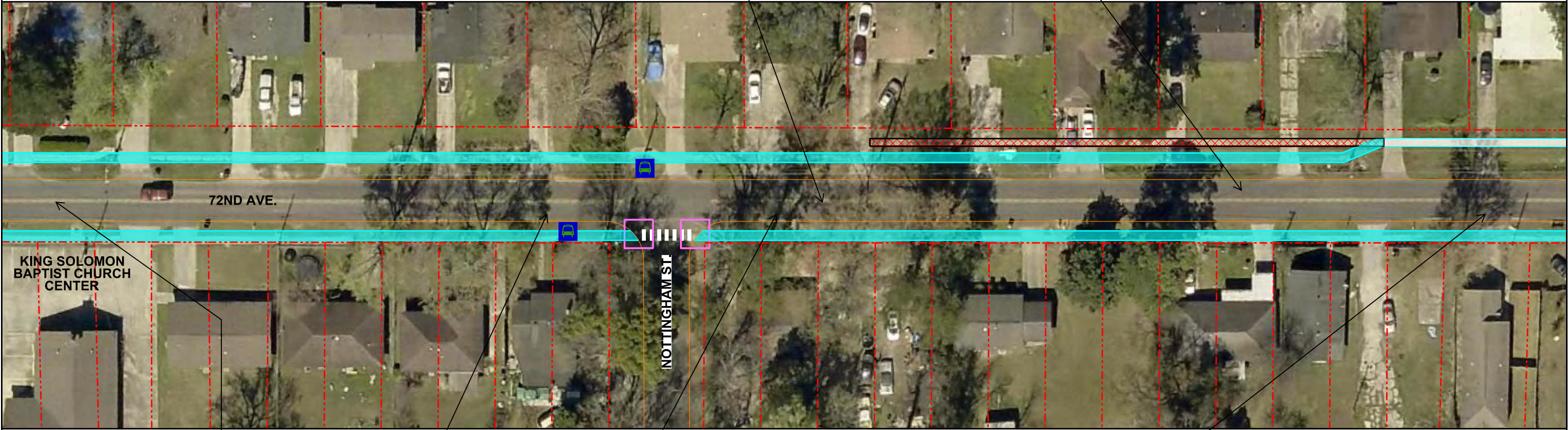
72ND AVENUE SIDEWALKS (SCENIC HWY. TO I-110)



Sheet No.
4 of 7
11/21/19

LEGEND:
 CURRENT BUS STOP
 EDGE OF PAVEMENT
 LOT LINES
 REQ'D NEW S/W

 REQ'D ADA RAMP W/ TRUNCATED DOME INSET
 EXIST. S/W
 REQ'D S/W REMOVAL



72ND AVENUE SIDEWALKS
(SCENIC HWY. TO I-110)



Sheet No.

5 of 7

11/21/19

LEGEND:

	CURRENT BUS STOP		REQ'D ADA RAMP W/ TRUNCATED DOME INSET
	EDGE OF PAVEMENT		EXIST. S/W
	LOT LINES		REQ'D S/W REMOVAL
	REQ'D NEW S/W		



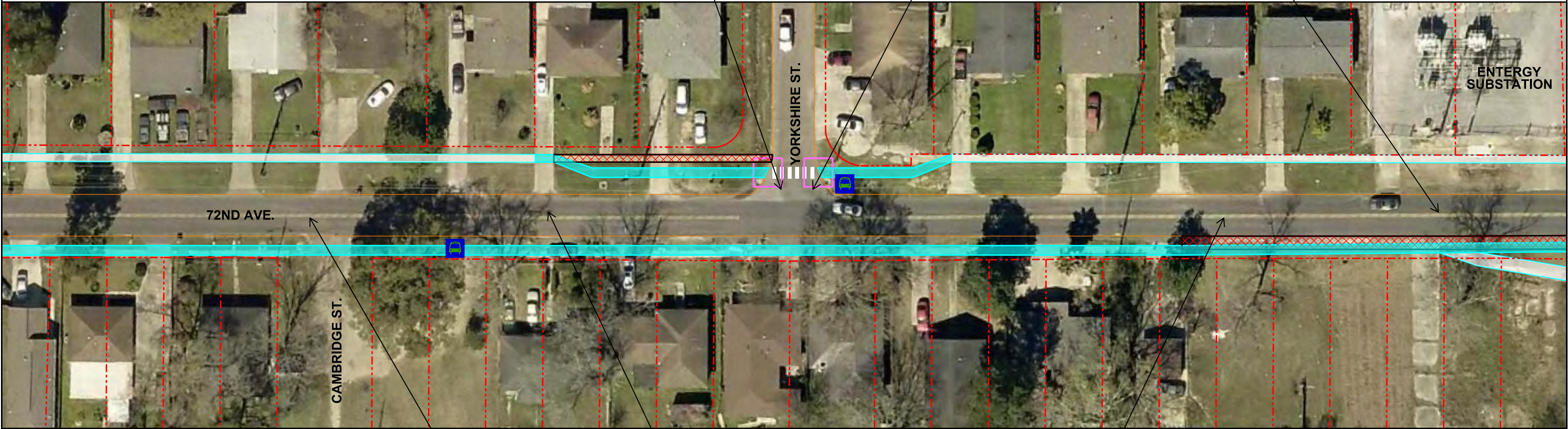
VIEW: W



VIEW: E



VIEW: N



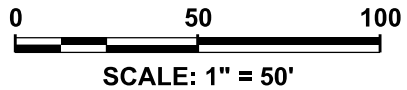
VIEW: S



VIEW: E



VIEW: E







72ND AVENUE SIDEWALKS (SCENIC HWY. TO I-110)






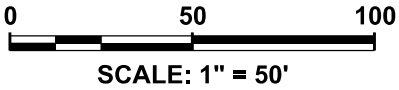
Sheet No.

6 of 7

11/21/19

LEGEND:
 CURRENT BUS STOP
 EDGE OF PAVEMENT
 LOT LINES
 REQ'D NEW S/W

 REQ'D ADA RAMP W/ TRUNCATED DOME INSET
 EXIST. S/W
 REQ'D S/W REMOVAL



72ND AVENUE SIDEWALKS

(SCENIC HWY. TO I-110)



Sheet No.

7 of 7

11/21/19