



Project Concept Report

This is a conceptual report. The project features and layouts will be further refined through planning and design phases.

Project: North Blvd. Corridor
Enhancement (I-110 to Foster/Florida)

Date: November 21, 2019

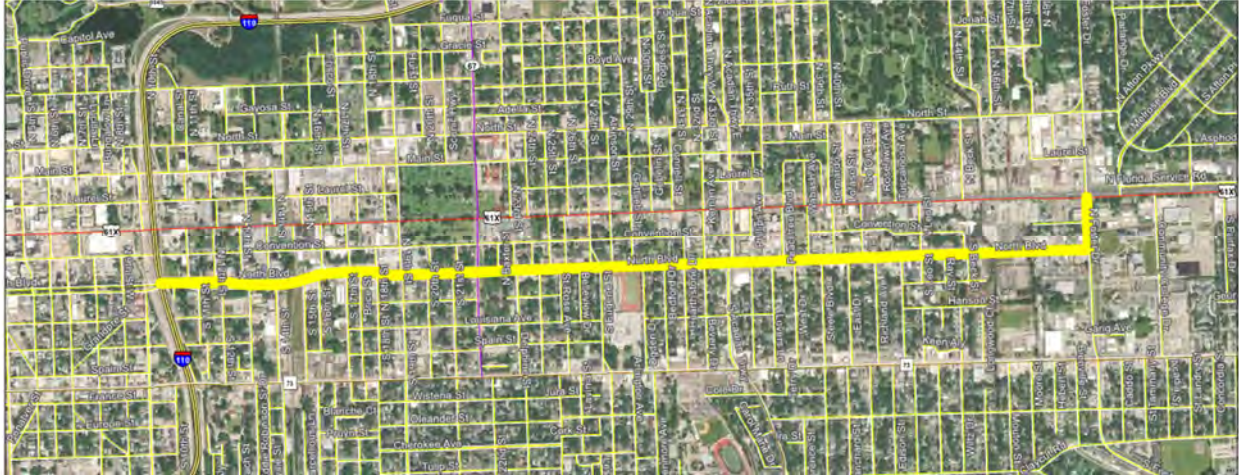


Image above represents broad outline of the project area as shown in 2018 MOVEBR tax plan proposition

Project: North Blvd. Corridor Enhancement (I-110 to Foster/Florida)

MOVEBR Program ID:	CEP-55
Project Length (feet):	14,000
Estimated Cost:	\$15,000,000
Funded from Proposition:	\$15,000,000

PROJECT OVERVIEW

This project proposes to enhance pedestrian and cyclist mobility by reducing the extending the Complete Streets corridor from the Downtown Greenway project eastward into the developed areas along North Blvd. Right-of-way space will be considered for reconfiguring to create bicycle facility space as well as space for enhancement features and continuous sidewalks through the corridor. High visibility crosswalks at all intersections and pedestrian countdown signals at signalized intersections will also be considered.

Current Condition:	Four-lane undivided w/sidewalks
Proposed Condition:	See Typical Sections for Preliminary Concept Alternates. During later phases, other alternate improvements will be developed and finalized with input from the public.



PROJECT STATUS

This project is currently in the planning phase.

COMPLETE STREETS

The MOVEBR Program has developed design guidelines that aim to institutionalize the Complete Streets policy by accommodating pedestrian, bicyclists, and transit users, regardless of age and ability.

DRAINAGE AND GREEN INFRASTRUCTURE CONSIDERATIONS

Among the drainage considerations for this specific project are the following:

A portion or all of this project is located within flood zone AE, which is considered a Special Flood Hazard Area (SFHA).

This project location is not in an area identified as an “estimated inundation area” from the 2016 floods. This map can be viewed at <https://www.arcgis.com/home/webmap/viewer.html?webmap=cb332217bdab4572b4930e02d6655f84>

Existing drainage for this project area utilizes a closed (sub-surfaced) system.

The project budget considers funding for green infrastructure to improve water quality and mitigate impacts of stormwater runoff. Examples of green infrastructure include but are not limited to porous pavement, creation or maintenance of a tree canopy, bioswales, planter boxes, rain gardens, and land conservation efforts.

ENVIRONMENTAL CONSIDERATIONS

Initial reviews support the following;

Minimal environmental considerations have been identified (potential Cultural Resources) and must be reviewed and potentially addressed.

**Note that this is not exhaustive of possible future environmental considerations.*

TRAFFIC & SIGNALIZATION INTERSECTIONS

The Projected Average Daily Traffic (ADT) for year 2042 is 12,000.

The current concept supports turn lanes at major intersections for budget purposes. Future traffic studies will identify locations for turn lanes, median openings and connections (driveways, side streets etc.).

Signal systems will be upgraded as a part of future projects if required due to future configurations.

UTILITIES CONSIDERATIONS

A preliminary assessment of the project area provides for the utilities listed below. Potential utility relocation costs will be included in the project budget if the infrastructure is located within the utility's own servitude.

Possible Utilities	Existing	Adjust/Relocate
Overhead Electric	●	TBD
Underground Electric	●	TBD
Water	●	TBD
Sanitary Sewer	●	TBD
Telephone	●	TBD
CATV/Fiber	●	TBD
Gas Distribution	●	TBD

RIGHT OF WAY CONSIDERATIONS

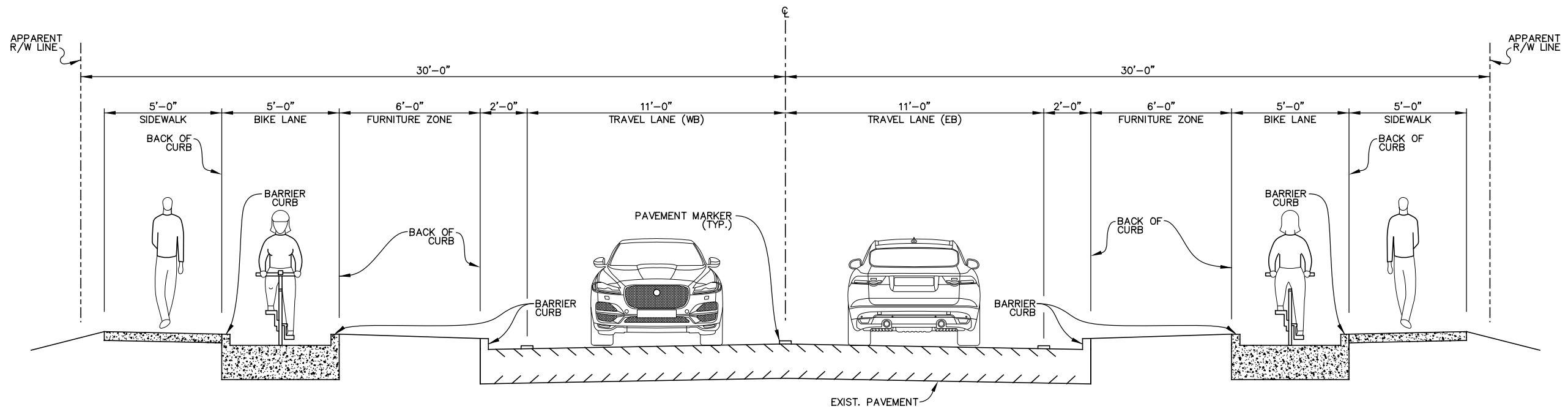
Minimal residential or commercial right of way acquisitions are anticipated at this time.



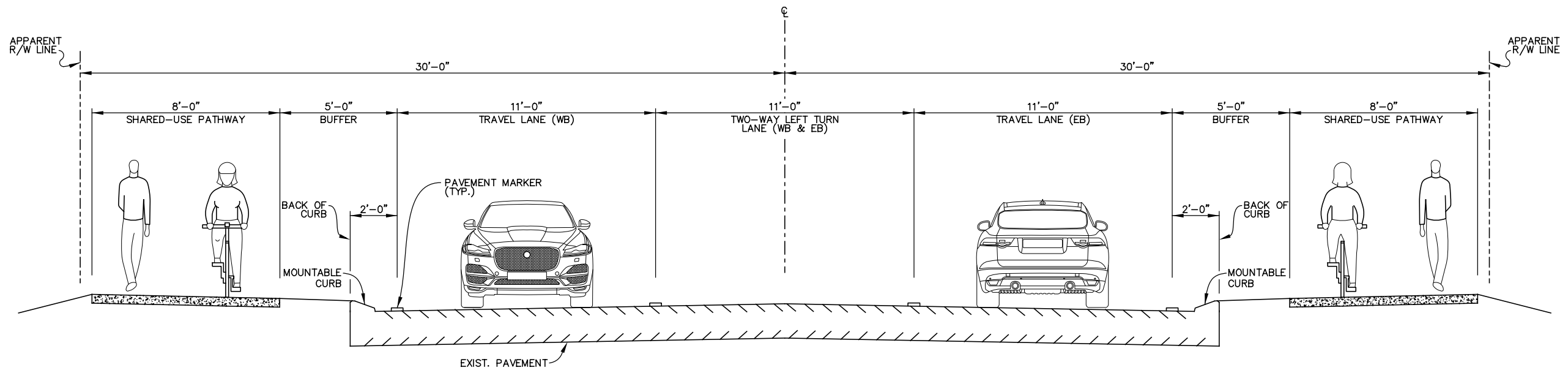
PROJECT CONCEPT PLAN

The following pages provide a potential solution(s) for the proposed project. The project features and layouts, shown within the typical section(s) and concept plans, will be further refined through planning and design phases of the project.





PRELIMINARY CONCEPT ALTERNATE 1
SCALE: 1"=5'



PRELIMINARY CONCEPT ALTERNATE 2
SCALE: 1"=5'

NOTE: OTHER ALTERNATE IMPROVEMENTS WILL BE DEVELOPED AND FINALIZED IN LATER PHASES. THESE COULD INCLUDE OTHER COMPLETE STREETS, GREEN INFRASTRUCTURE, AND LIGHTING APPLICATIONS.



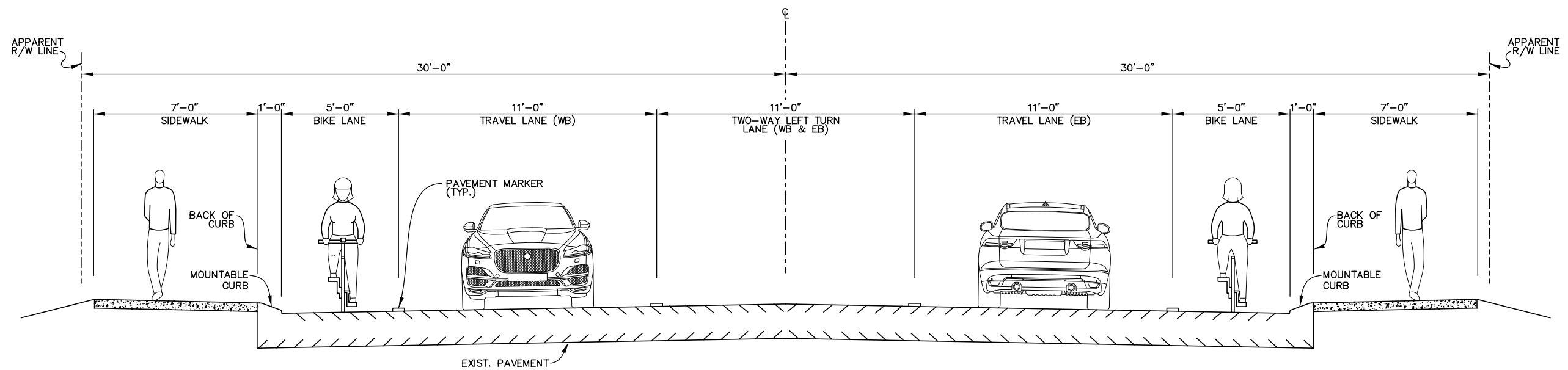
NORTH BOULEVARD TYPICAL SECTIONS



Sheet No.

1 of 2

11/21/19



PRELIMINARY CONCEPT ALTERNATE 3

SCALE: 1"=5'

NOTE: OTHER ALTERNATE IMPROVEMENTS WILL BE DEVELOPED AND FINALIZED IN LATER PHASES. THESE COULD INCLUDE OTHER COMPLETE STREETS, GREEN INFRASTRUCTURE, AND LIGHTING APPLICATIONS.



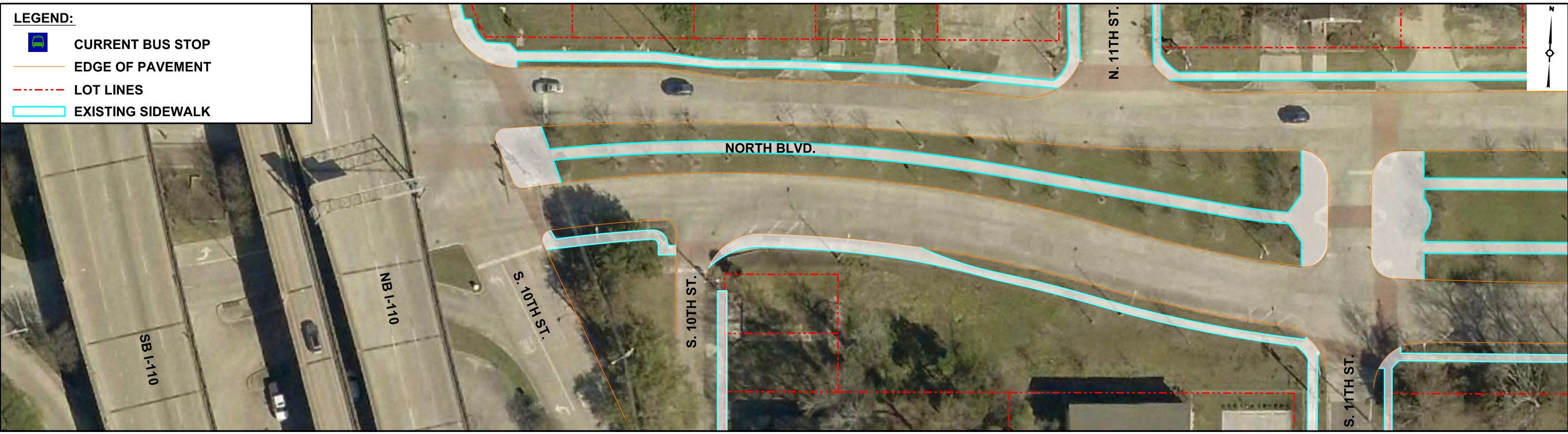
**NORTH BOULEVARD
TYPICAL SECTIONS**



Sheet No.

2 of 2

11/21/19



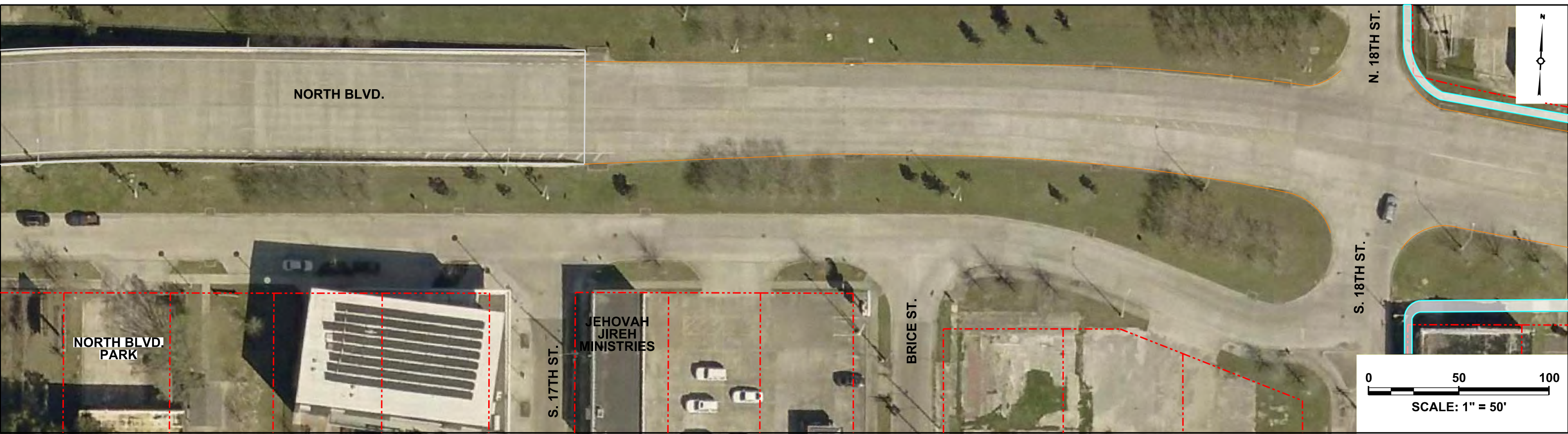
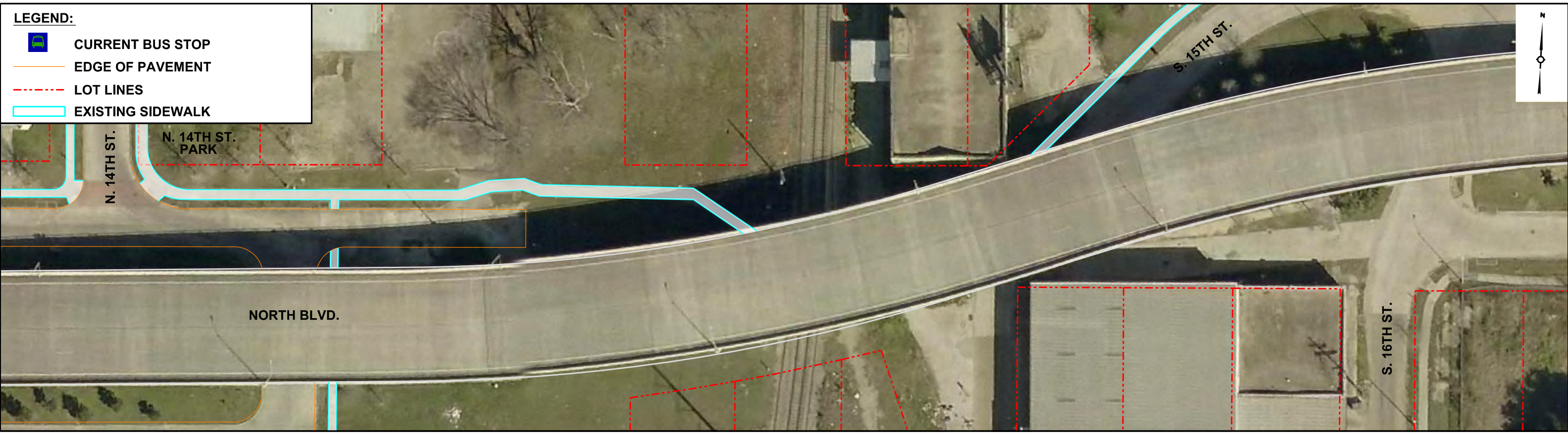
NORTH BLVD. CORRIDOR ENHANCEMENT
(I-110 TO FOSTER/FLORIDA)



Sheet No.

1 of 9

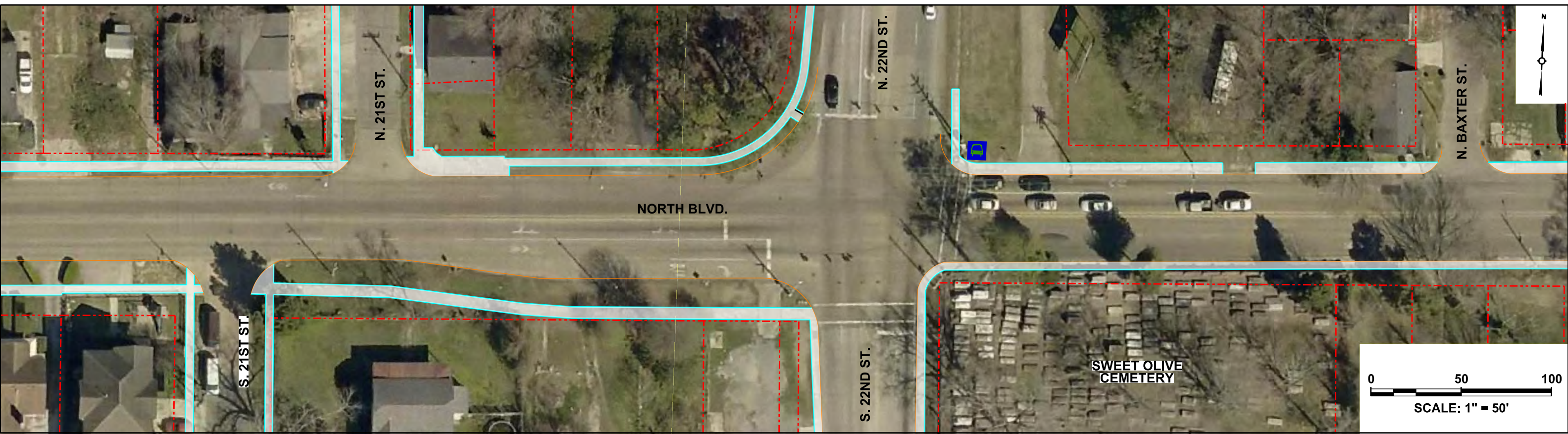
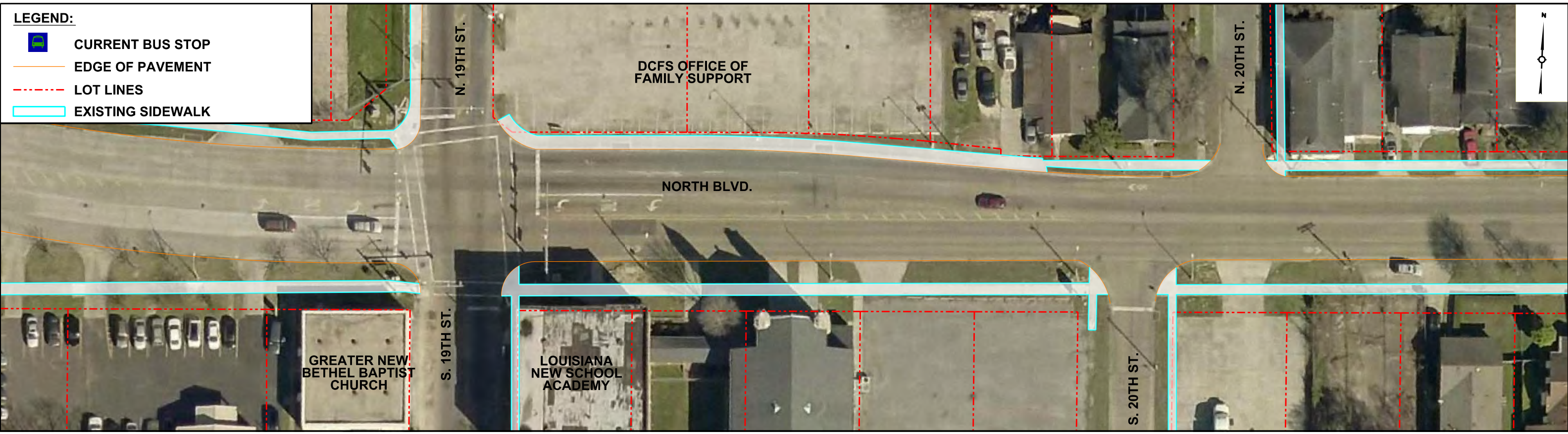
11/21/19



NORTH BLVD. CORRIDOR ENHANCEMENT
(I-110 TO FOSTER/FLORIDA)



Sheet No.
2 of 9
11/21/19



NORTH BLVD. CORRIDOR ENHANCEMENT
(I-110 TO FOSTER/FLORIDA)







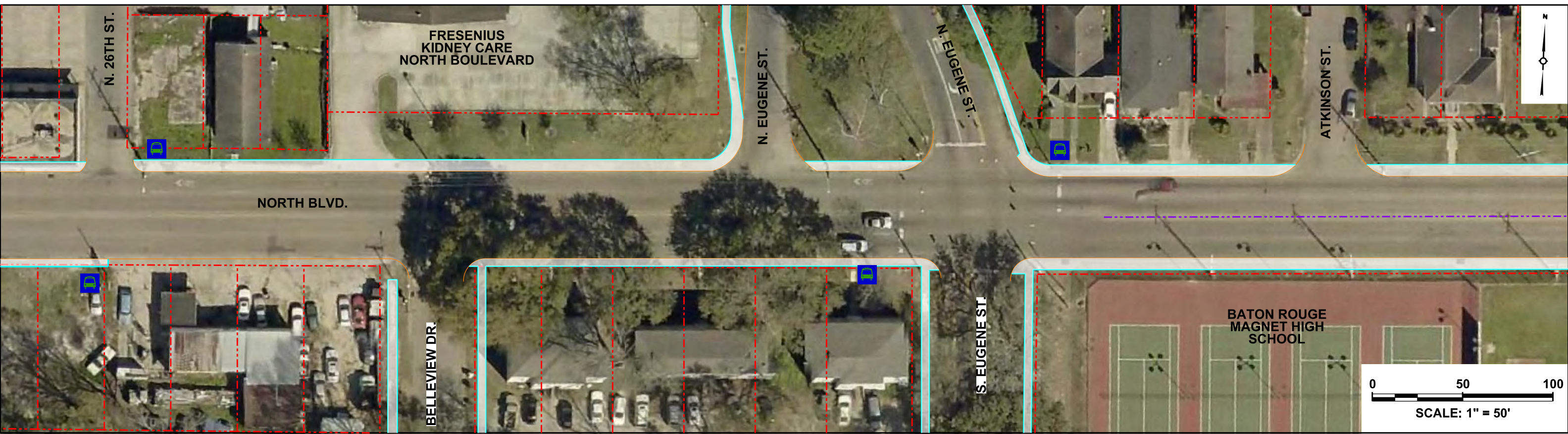
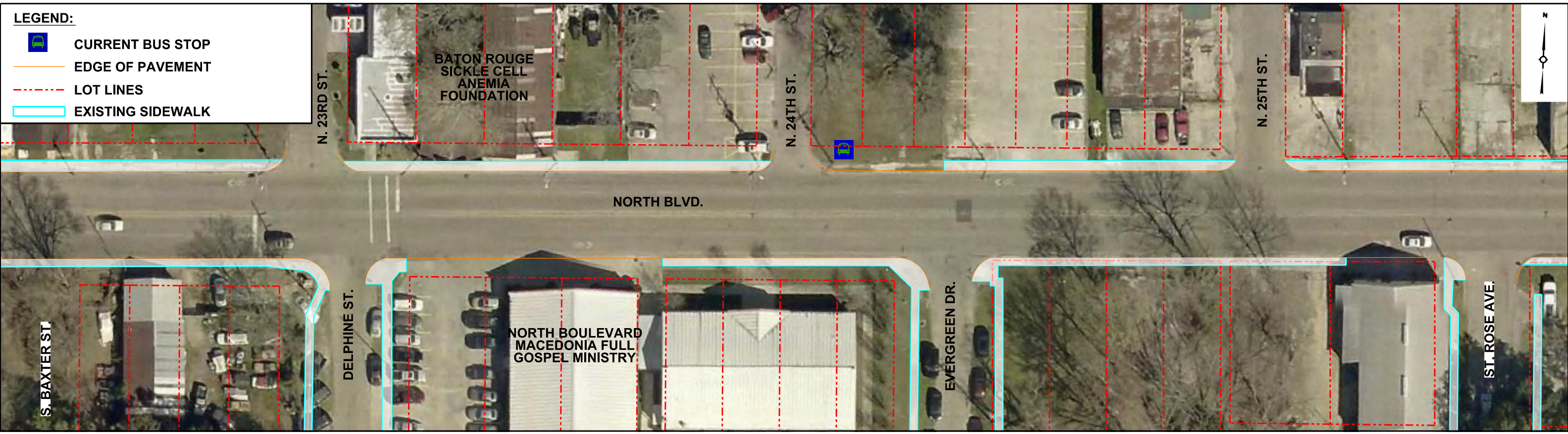
Sheet No.

3 of 9

11/21/19

LEGEND:

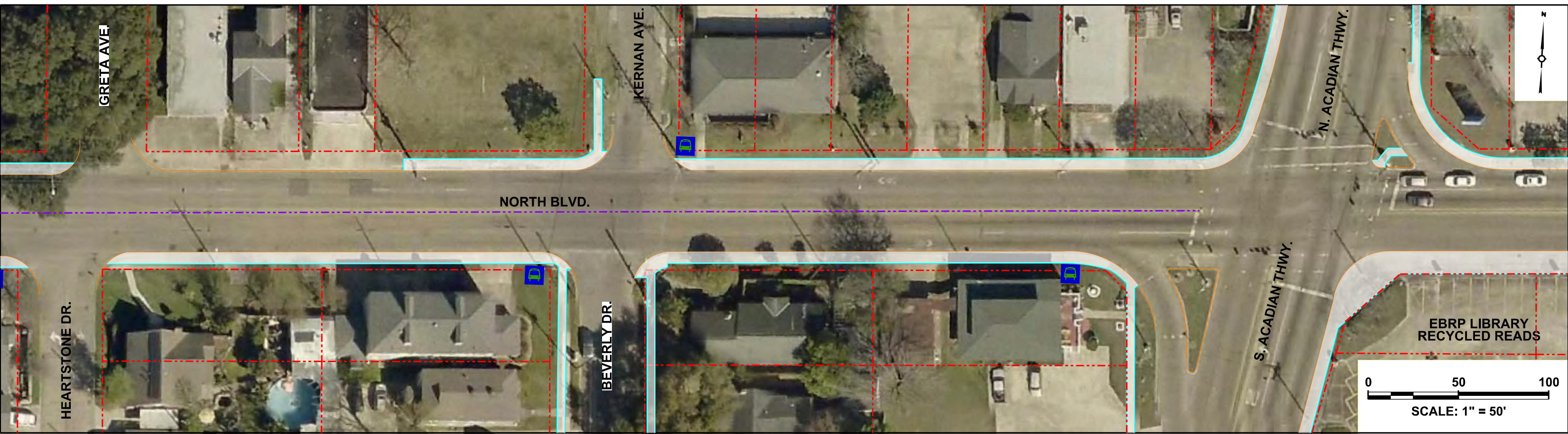
-  CURRENT BUS STOP
-  EDGE OF PAVEMENT
-  LOT LINES
-  EXISTING SIDEWALK



**NORTH BLVD. CORRIDOR ENHANCEMENT
(I-110 TO FOSTER/FLORIDA)**



Sheet No.
4 of 9
11/21/19



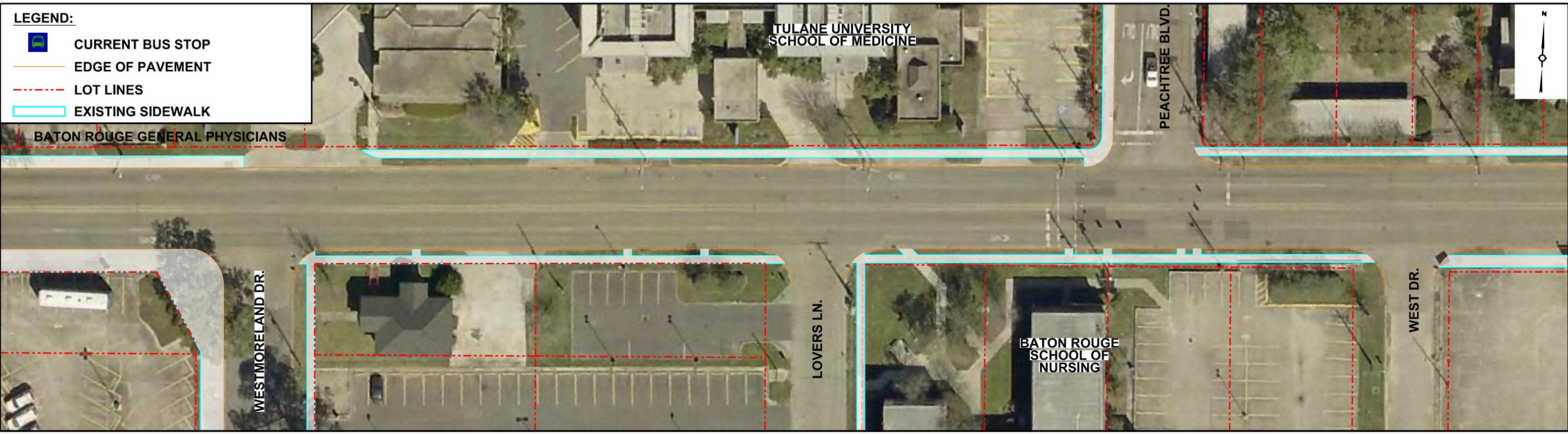
NORTH BLVD. CORRIDOR ENHANCEMENT
(I-110 TO FOSTER/FLORIDA)



Sheet No.

5 of 9

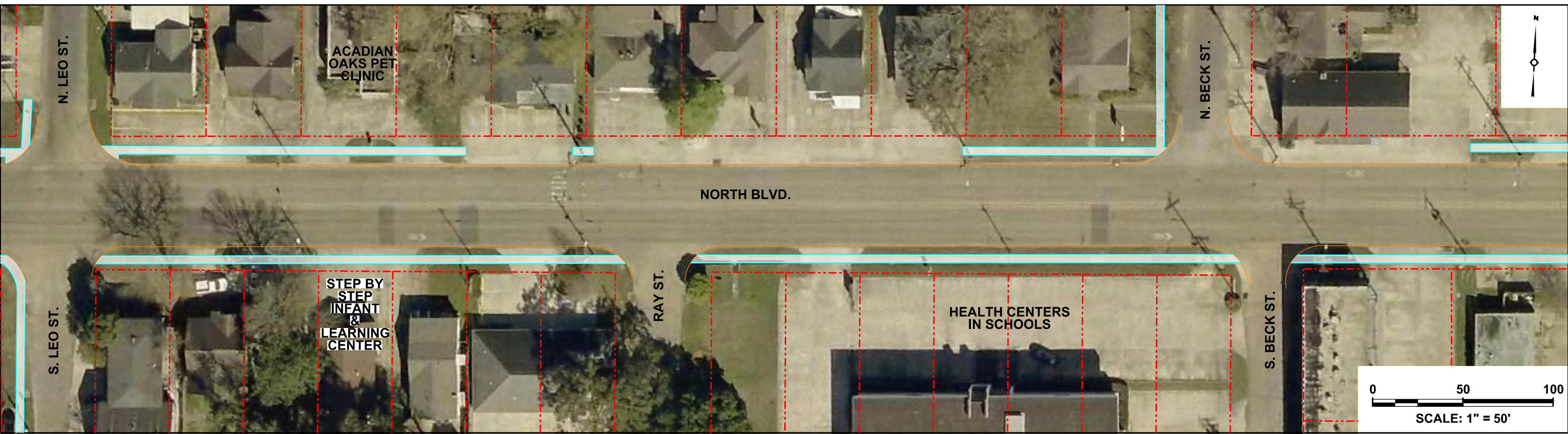
11/21/19



NORTH BLVD. CORRIDOR ENHANCEMENT
(I-110 TO FOSTER/FLORIDA)



Sheet No.
6 of 9
11/21/19



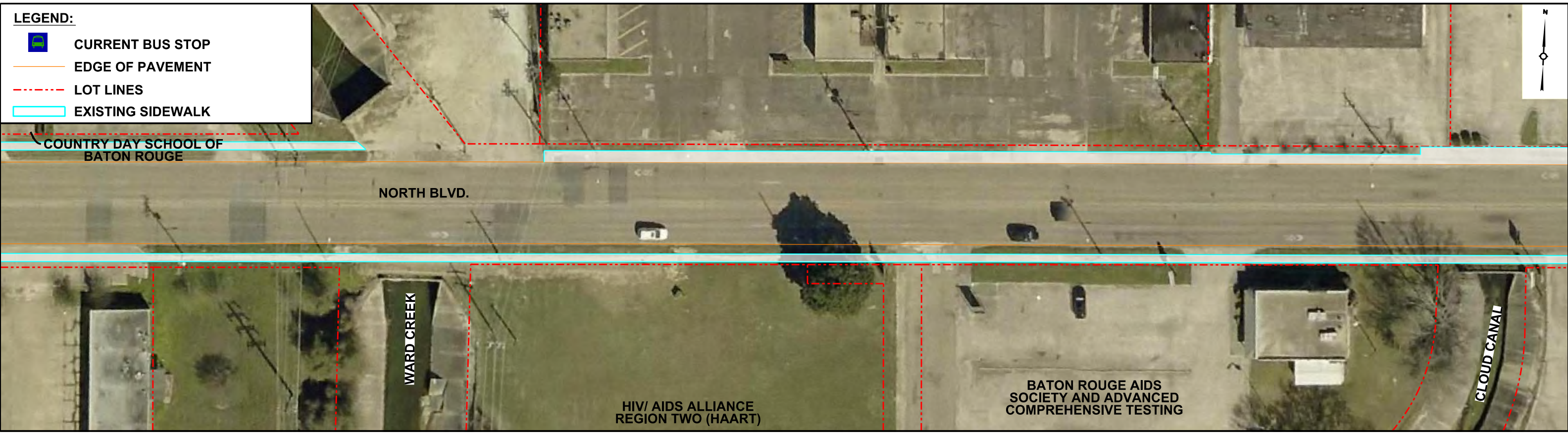
NORTH BLVD. CORRIDOR ENHANCEMENT
(I-110 TO FOSTER/FLORIDA)



Sheet No.

7 of 9





11/21/19

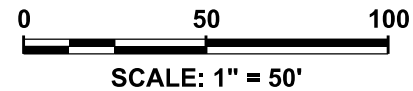
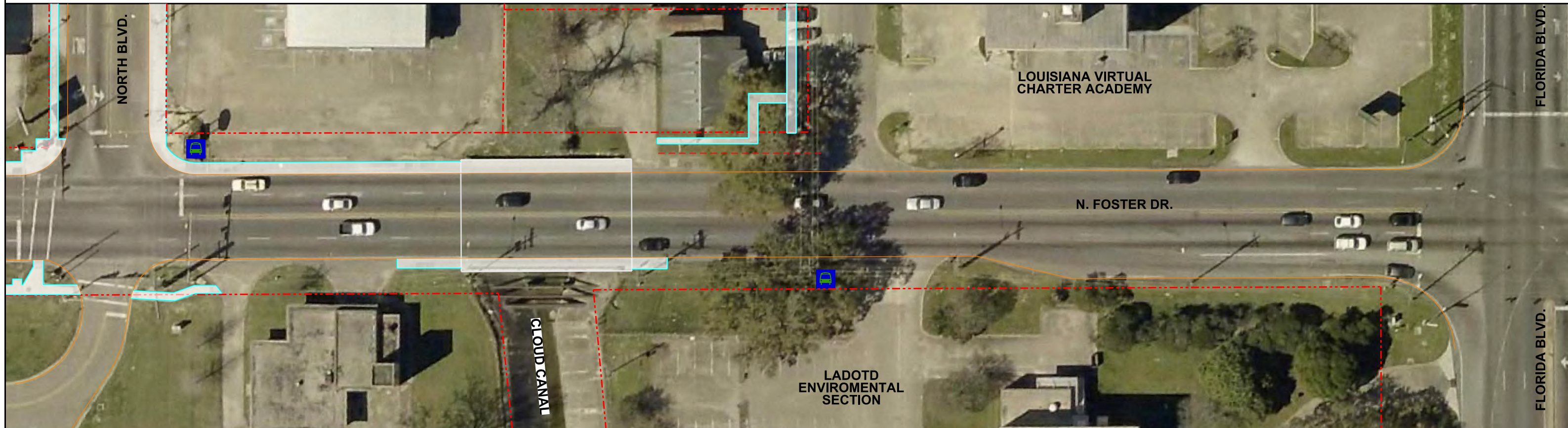
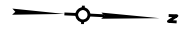


NORTH BLVD. CORRIDOR ENHANCEMENT
(I-110 TO FOSTER/FLORIDA)



Sheet No.
8 of 9
11/21/19

- LEGEND:**
-  CURRENT BUS STOP
 -  EDGE OF PAVEMENT
 -  LOT LINES
 -  EXISTING SIDEWALK



NORTH BLVD. CORRIDOR ENHANCEMENT
(I-110 TO FOSTER/FLORIDA)



Sheet No.

9 of 9

11/21/19