



GROOM ROAD CORRIDOR IMPROVEMENTS (LA 19 – Plank Road)

Virtual Public Meeting

March 3, 2022

6:00 p.m. | Via Zoom



MAYOR-PRESIDENT
**SHARON
WESTON
BROOME**



A decorative graphic at the top left of the slide consisting of a solid green arrow pointing right, followed by two smaller, hollow green arrows pointing right.

Program Overview

- ½ cent parish wide sales tax
- Commenced April 1, 2019 thru March 31, 2049
- \$1B dollars invested
- Food & medical prescriptions are exempt
- Proceeds can ONLY be spent on APPROVED list of projects



Vision Statement

MOVEBR will be the industry standard of excellence in delivering transportation solutions that will move our region in a safe, sustainable manner and further enhance strong neighborhoods, communities, and economic vitality for all residents of East Baton Rouge

Type of Project	Proposition Funding	Estimated Cost
40 New Capacity Improvements	\$636.2 Million	\$805.5 Million
12 Existing Corridor Improvements	\$170.0 Million	\$204.0 Million
10 Constructing Community Enhancement Road Projects+	\$65.8 Million	\$68.6 Million
Parish-Wide Signalization/Synchronization*	\$40.0 Million	\$40.0 Million
TOTAL	\$921.0 Million	\$1,118.1 Billion

+ \$49M is for community enhancement projects & \$10M for ADA compliance

*Denotes parish wide projects



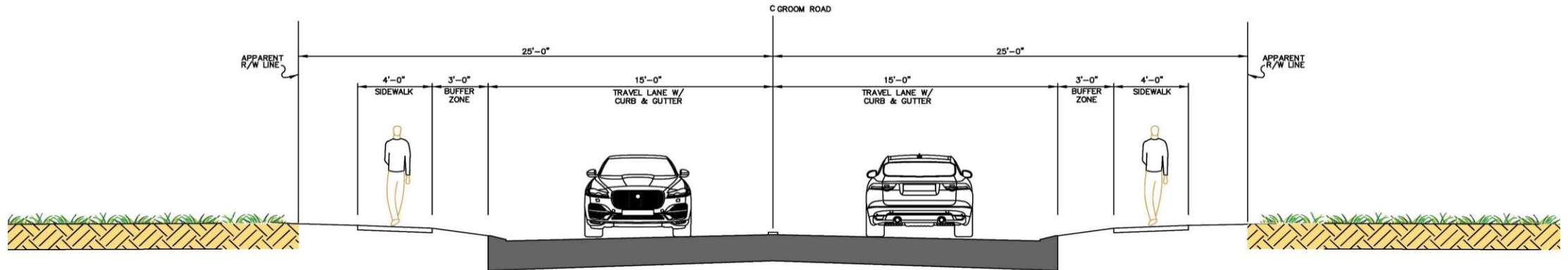
Groom Road
(LA 19 – Plank Road)



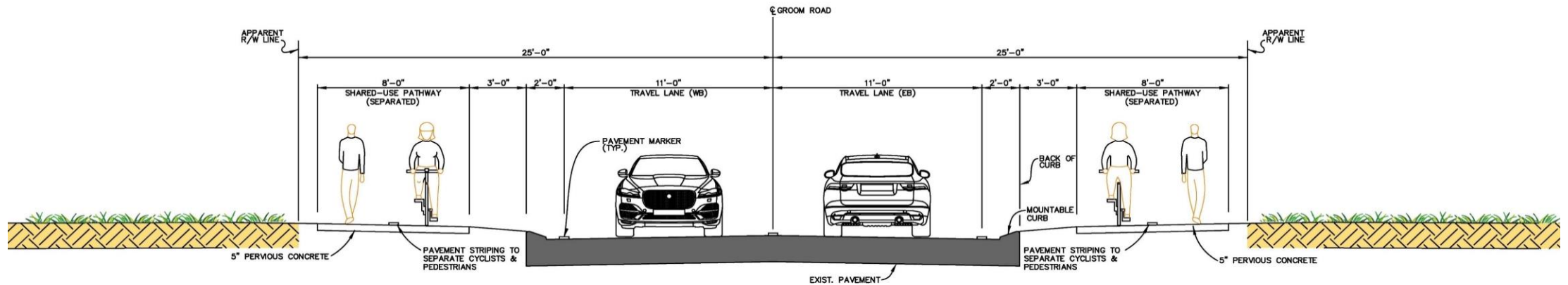
Project Overview



Typical Section



TYPICAL SECTION OF EXISTING GROOM ROAD
SCALE: N.T.S.



TYPICAL SECTION OF GROOM ROAD IMPROVEMENTS
SCALE: N.T.S.

For more information visit:
movebr.brla.gov/Groom
 or contact us at movebr@brla.gov

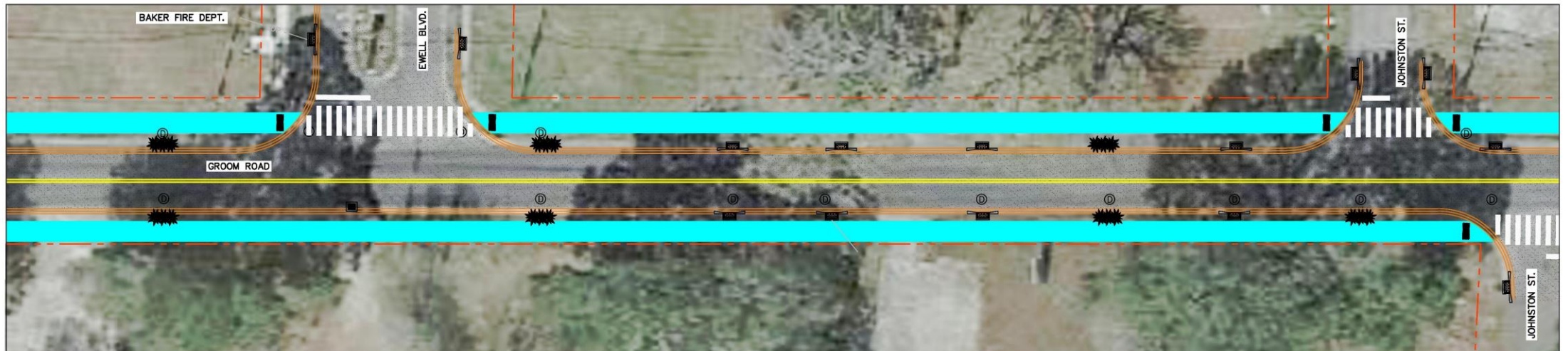


Project Concept Plan



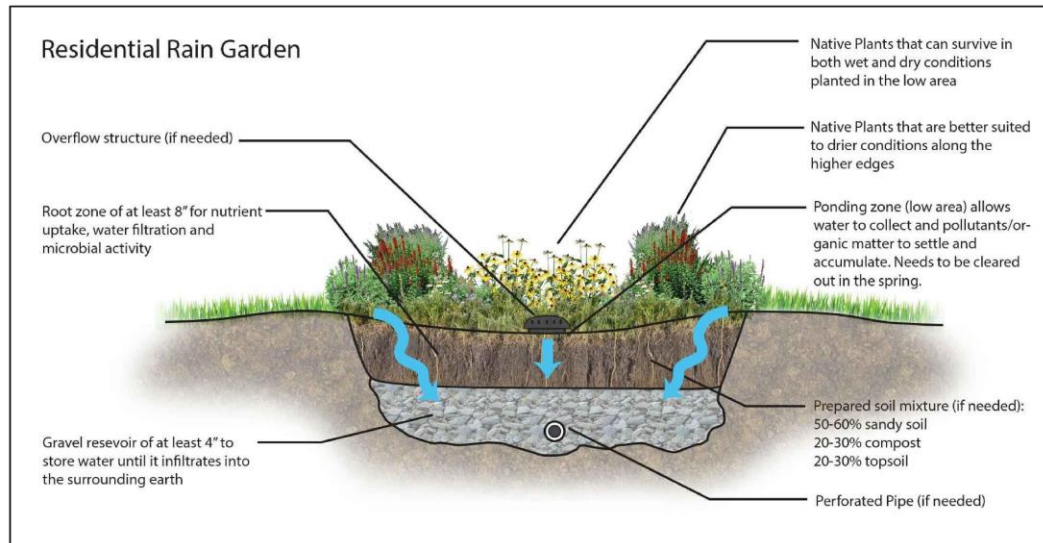


Project Concept Plan



Green Infrastructure Considerations

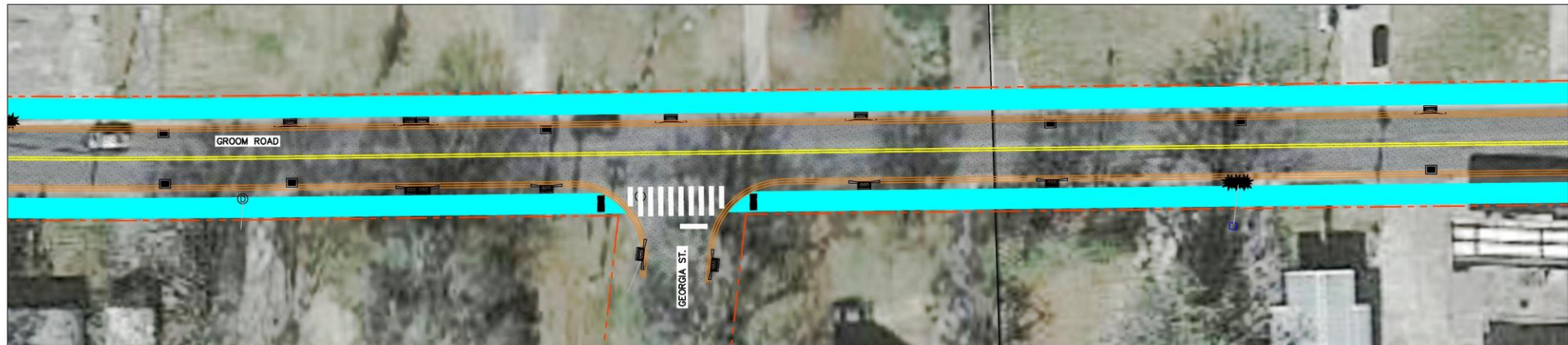
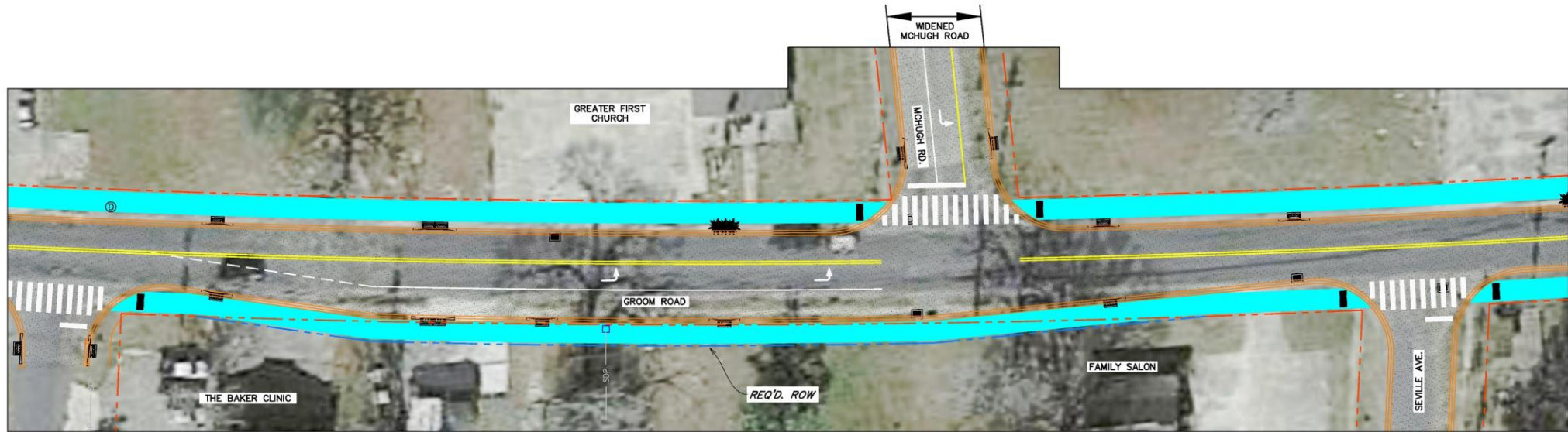
Rain Gardens are small vegetated basins or depressions which capture and absorb surface runoff from storms. They capture stormwater runoff before it can flow into a storm drain. The stormwater is absorbed into a prepared soil mixture followed by a gravel reservoir. The prepared soil mixture and gravel reservoir act as a filtration system while also slowing down stormwater runoff. Rain gardens also add visually attractive features to any given site while providing a wide variety of untold advantages.



For more information visit:
movebr.brla.gov/Groom
 or contact us at movebr@brla.gov



Project Concept Plan



Project Concept Plan





Project Schedule

PHASE	ANTICIPATED SCHEDULE
Finalized Design Documents	2 nd Quarter 2023
Right-of-Way Acquisition Process	4 th Quarter 2022 – 3 rd Quarter 2023
Roadway Construction	1 st Quarter 2024 – 2 nd Quarter 2025



Contact Us
movebr@brla.gov

For more information visit
www.movebr.brila.gov



@movebrla