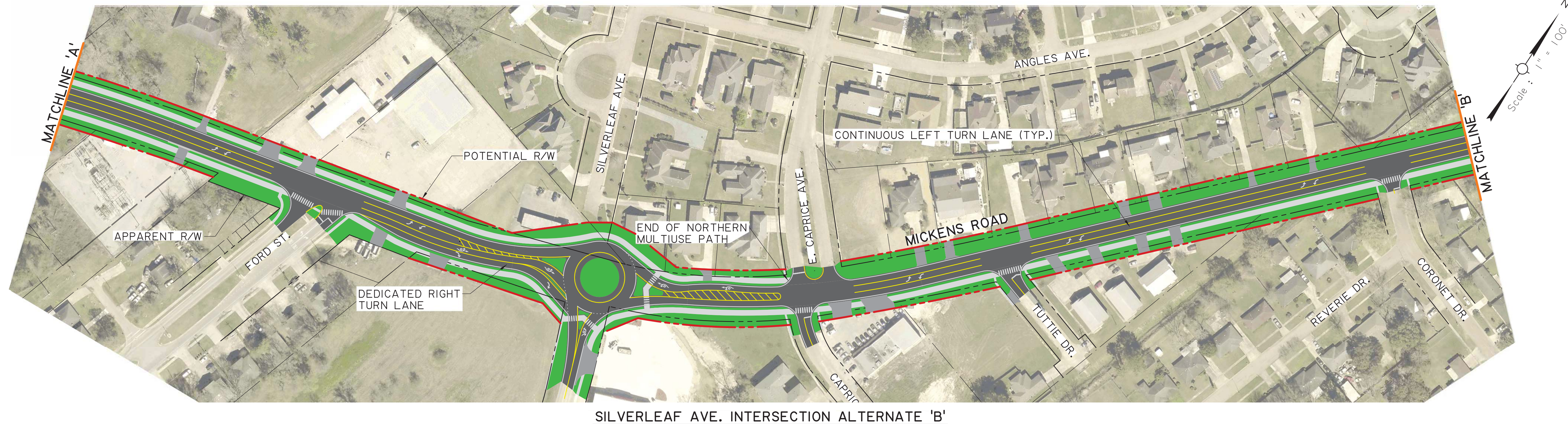
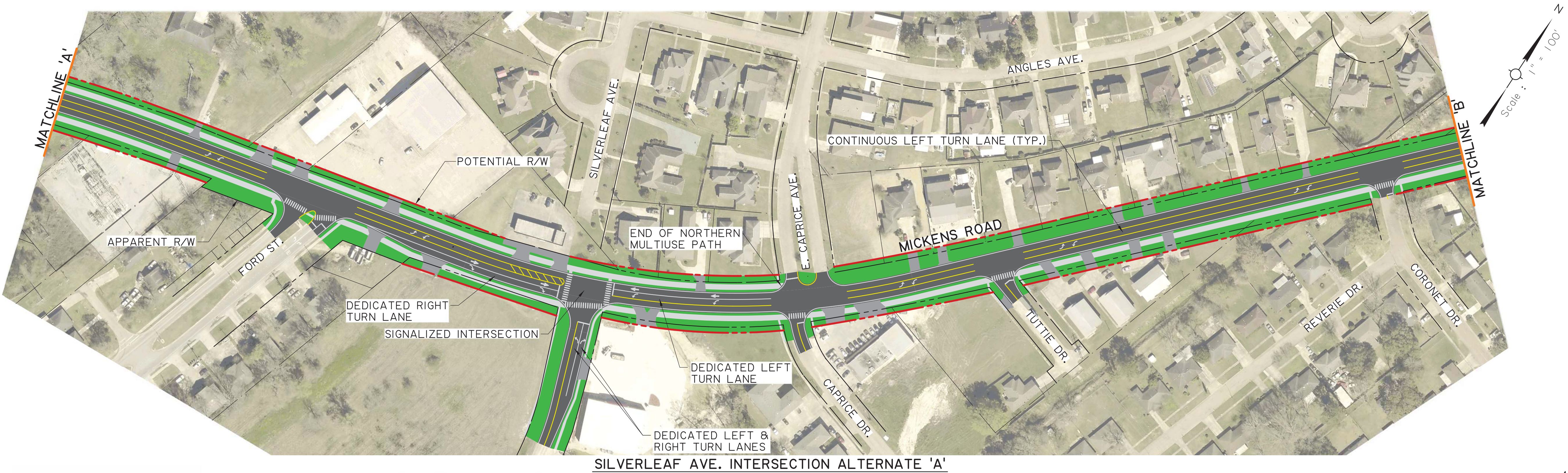


NOTE:
ROADWAY IMPROVEMENTS ARE CONCEPTUAL ONLY AND SUBJECT TO CHANGE BASED UPON FINAL APPROVAL AND ENGINEERING DESIGN. MOVEBR IS NOT LIABLE FOR THE USE OR MISUSE, MISINTERPRETATION, OR ERRORS IN ANY CALCULATIONS DERIVED FROM ILLUSTRATED CONCEPTUAL IMPROVEMENT PLAN.

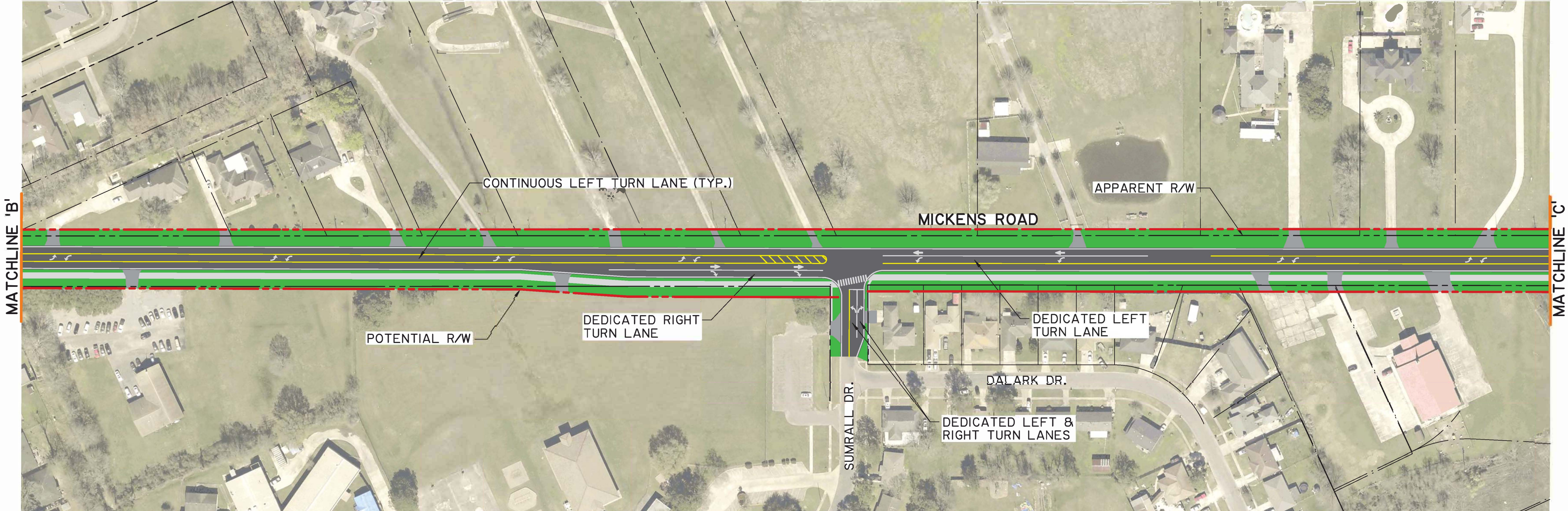


PROPOSED IMPROVEMENT PLAN - PRELIMINARY LAYOUT

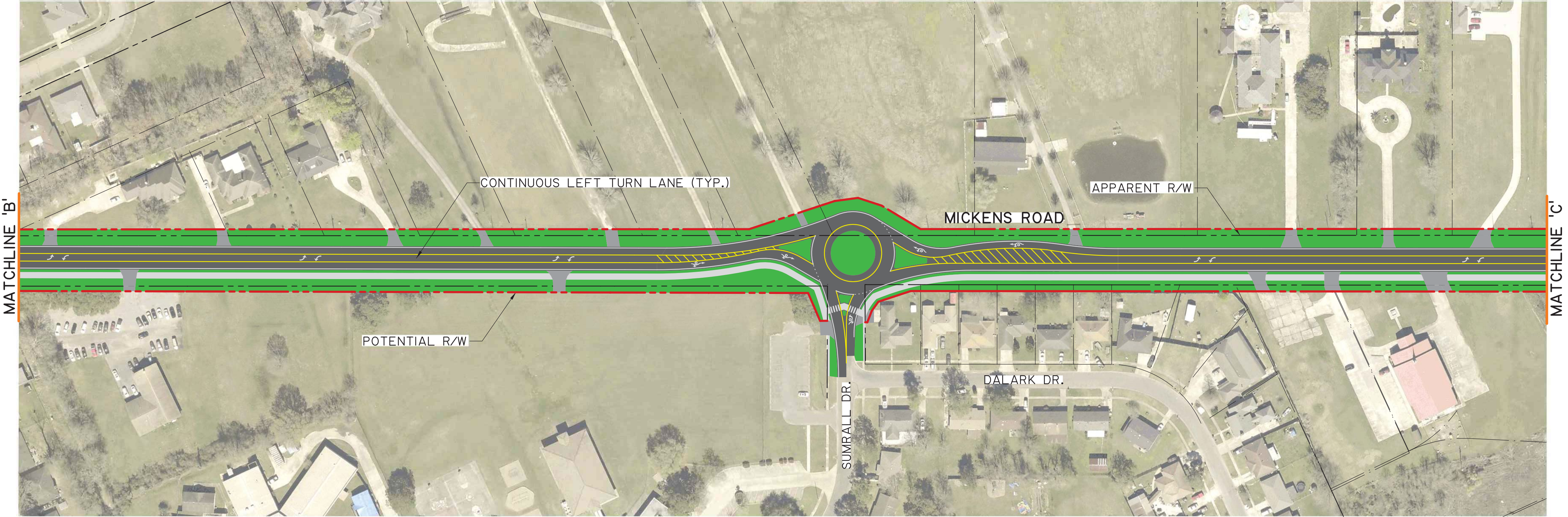


NOTE:
ROADWAY IMPROVEMENTS ARE CONCEPTUAL ONLY AND SUBJECT TO CHANGE BASED UPON FINAL APPROVAL AND ENGINEERING DESIGN. MOVEBR IS NOT LIABLE FOR THE USE OR MISUSE, MISINTERPRETATION, OR ERRORS IN ANY CALCULATIONS DERIVED FROM ILLUSTRATED CONCEPTUAL IMPROVEMENT PLAN.





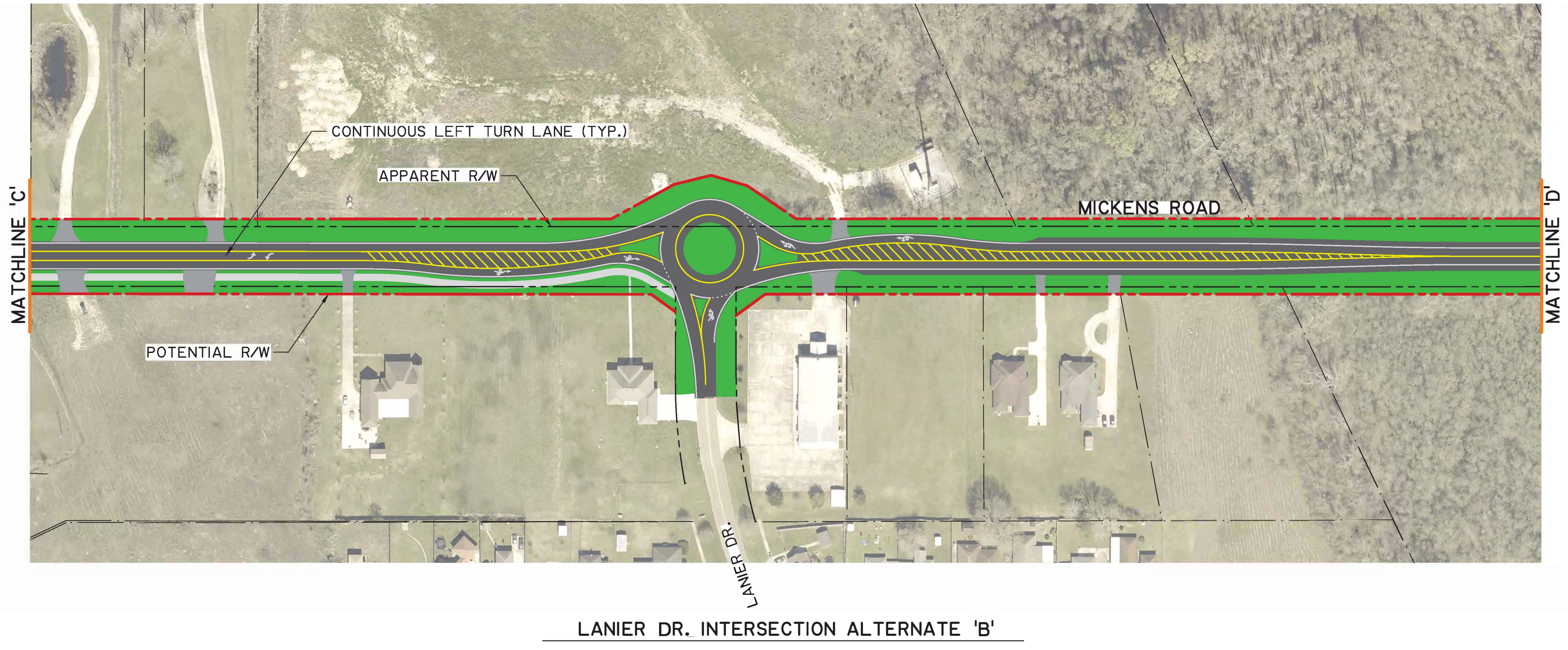
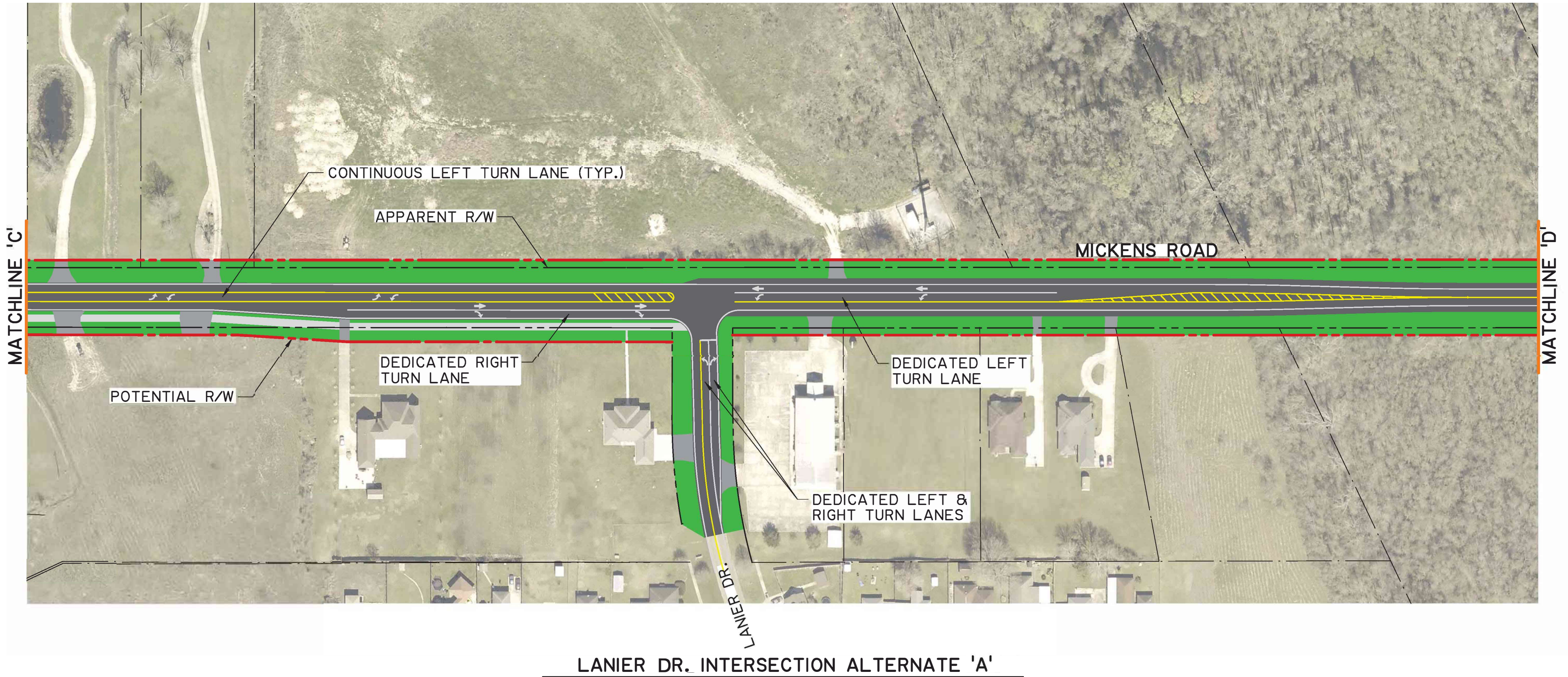
SUMRALL DR. INTERSECTION ALTERNATE 'A'



SUMRALL DR. INTERSECTION ALTERNATE 'B'

NOTE:
ROADWAY IMPROVEMENTS ARE CONCEPTUAL ONLY AND SUBJECT TO CHANGE BASED
UPON FINAL APPROVAL AND ENGINEERING DESIGN. MOVEBR IS NOT LIABLE FOR THE
USE OR MISUSE, MISINTERPRETATION, OR ERRORS IN ANY CALCULATIONS DERIVED
FROM ILLUSTRATED CONCEPTUAL IMPROVEMENT PLAN.





NOTE:
ROADWAY IMPROVEMENTS ARE CONCEPTUAL ONLY AND SUBJECT TO CHANGE BASED
UPON FINAL APPROVAL AND ENGINEERING DESIGN. MOVEBR IS NOT LIABLE FOR THE
USE OR MISUSE, MISINTERPRETATION, OR ERRORS IN ANY CALCULATIONS DERIVED
FROM ILLUSTRATED CONCEPTUAL IMPROVEMENT PLAN.



PROPOSED IMPROVEMENT PLAN - PRELIMINARY LAYOUT



Mickens Road - Hooper Road to Joor Road

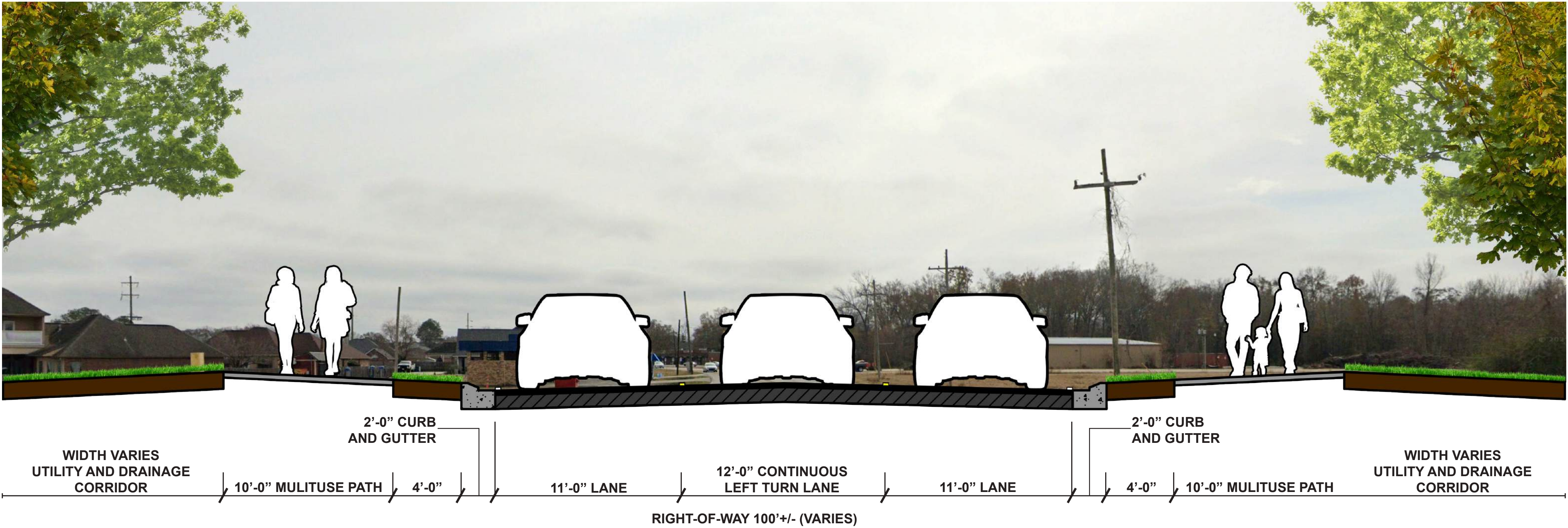
COMMUNITY ENGAGEMENT MEETING

September 2025

NOTE:
ROADWAY IMPROVEMENTS ARE CONCEPTUAL ONLY AND SUBJECT TO CHANGE BASED
UPON FINAL APPROVAL AND ENGINEERING DESIGN. MOVEBR IS NOT LIABLE FOR THE
USE OR MISUSE, MISINTERPRETATION, OR ERRORS IN ANY CALCULATIONS DERIVED
FROM ILLUSTRATED CONCEPTUAL IMPROVEMENT PLAN.

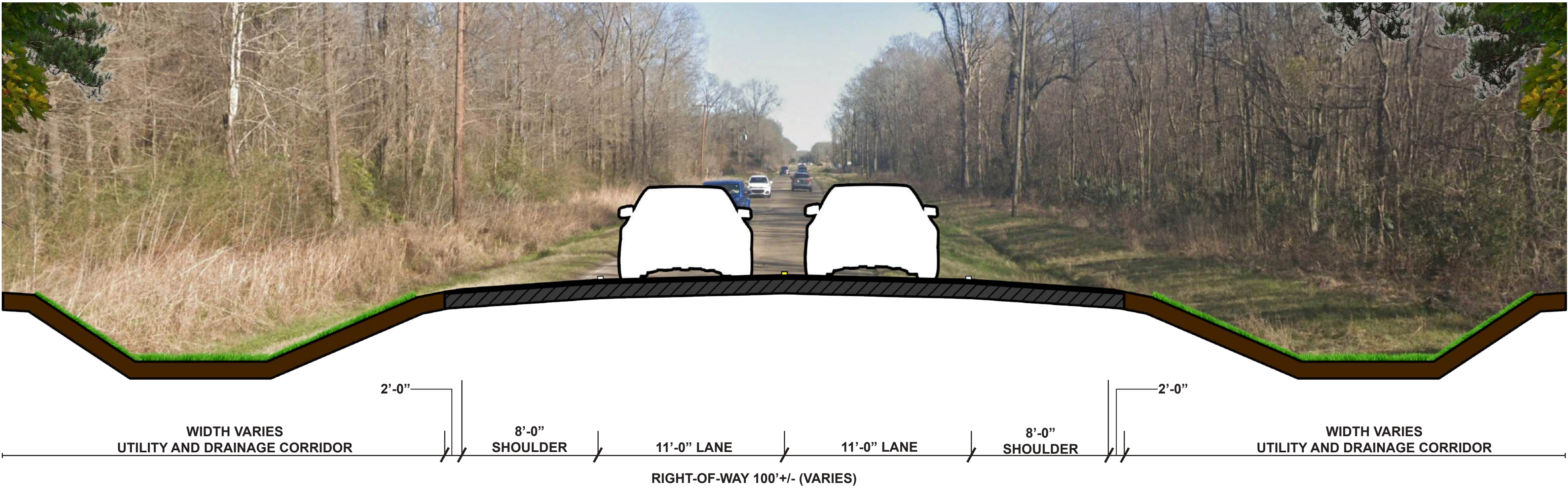


PROPOSED IMPROVEMENT PLAN - CROSS SECTION



Typical Section AA - Proposed Improvements (Mickens Rd. - Hooper Rd. to Lanier Rd.)

Not To Scale



Typical Section BB - Proposed Improvements (Mickens Rd. - Lanier Road to Joor Rd.)

Not To Scale