



PORT HUDSON-PRIDE ROAD (LA 964 - LA 19)

NEW CAPACITY PROJECT

Public Meeting
April 16, 2025

MOVEBR PROGRAM OVERVIEW

The MOVEBR Transportation and Infrastructure Improvements Program is the most significant transportation infrastructure investment in East Baton Rouge Parish history. The 1/2 cent sales will fund 70+ roadway projects which include building new roads, improving current roadway corridors and upgrading signals. Proceeds of the tax can only be spent on the approved list of projects. This open house provides an opportunity to review conceptual images of the proposed improvements and allow the public to ask questions. Exhibits presented during the open house can be found on the project page: movebr.brla.gov/pride

EXISTING SITE CONDITIONS

Port Hudson - Pride Road, between LA 964 & LA 19, is currently a two-lane roadway with open ditches, without paved shoulders.

PROJECT DESCRIPTION

This project proposes adding paved shoulders, reconstructing existing open ditches throughout the corridor and installing sidewalks on both sides of the roadway. These improvements will provide better connectivity between LA 964 and Pin Oak Landing on both sides of the Port Hudson - Pride Road Corridor.

PROJECT LIMITS



PROPOSED PROJECT SCHEDULE

Right-of-Way Acquisition
2/2026 - 11/2026

Clearing & Grubbing
12/2026 - 8/2027

Utility Relocation
8/2027 - 8/2028

Roadway Construction
9/2028 - 9/2030

PROJECT STATUS

Design alternatives ready for public view; Design consultant beginning final design.

COST
ESTIMATE **\$21.9M**

ESTIMATED
COMPLETION **2030**

PROJECT ELEMENTS

- The reconstructed roadway will consist of two 11' travel lanes with 8 ft wide shoulders throughout the corridor 5ft sidewalks will be installed, on both sides of the roadway, from LA 964 to Pin Oak Subdivision.
- The bridges over White and Copper Mill Bayous will be replaced. The width of the new bridges will be increased by 14ft allowing for two lanes and 8 ft shoulders which improves traffic flow and provides space for emergency stops.
- Replacing the existing timber bridge supports with concrete materials enhances the structural integrity of the bridges and reduces maintenance.
- Drainage ditches will be reconstructed to provide stable slopes and sub surface drainage will be utilized in some areas to reduce right-of-way impacts.

FAQs

How long will construction last? Approximately 2 years.

What will be the speed limit? Enhance safety for all road users, the speed limit will be reduced from 45 mph to 40 mph prior to the bridge at White Bayou.

Are Complete Street enhancements included? Yes, sidewalks will be installed along both sides of the roadway, in the developed areas of the project, from LA 964 to Pin Oak Drive. These improvements will make the roadway more accessible for additional modes of transportation including bicycles and pedestrians.

PROPOSED IMPROVEMENT PLAN - CROSS SECTION



Typical Section AA - Proposed Improvements (LA 964 TO PIN OAK SUBDIVISION)
Not To Scale



Typical Section BB - Proposed Improvements (PIN OAK SUBDIVISION TO LA 19)
Not To Scale

Port Hudson - Pride Road Improvements
COMMUNITY ENGAGEMENT MEETING
April 2025

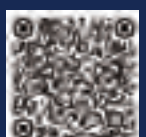


movebr.brla.gov

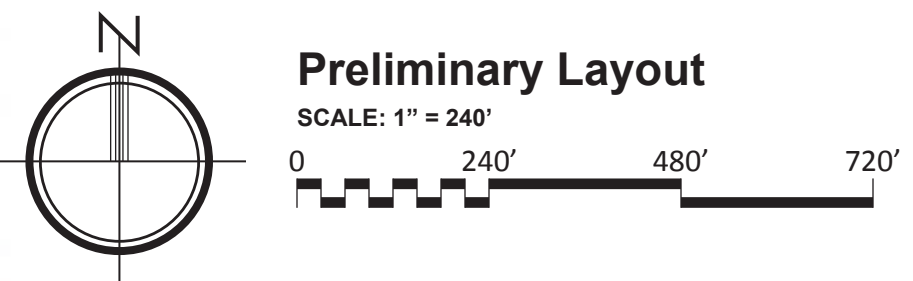
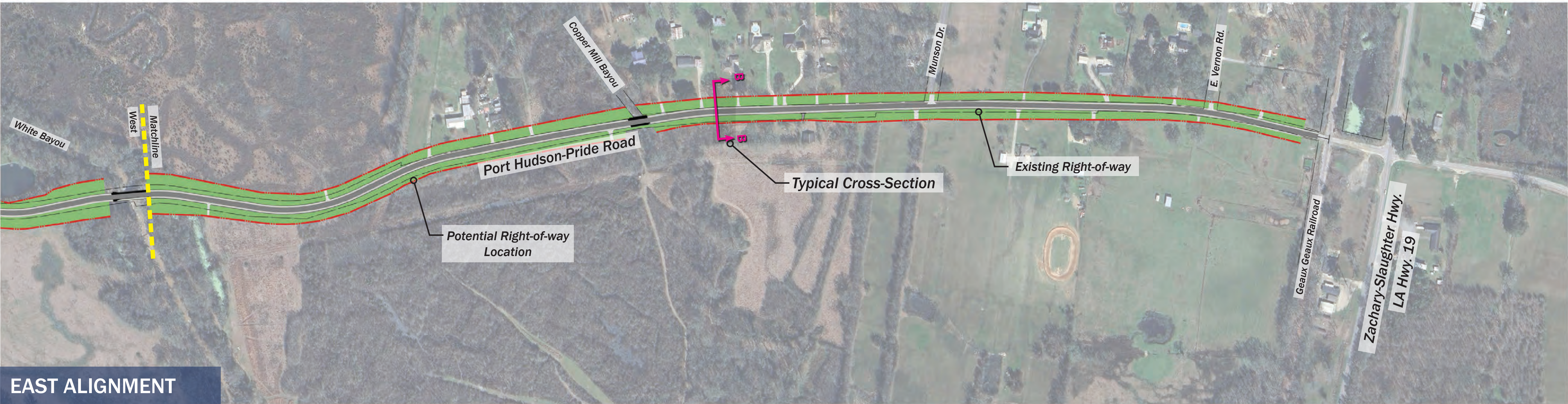
Email: movebr@brla.gov

@movebrla

Scan the QR code to learn
more about the project



PROPOSED IMPROVEMENT PLAN - OVERALL ALIGNMENT



NOTE:
ROADWAY IMPROVEMENTS ARE CONCEPTUAL ONLY AND SUBJECT TO CHANGE BASED
UPON FINAL APPROVAL AND ENGINEERING DESIGN. MOVEBR IS NOT LIABLE FOR THE
USE OR MISUSE, MISINTERPRETATION, OR ERRORS IN ANY CALCULATIONS DERIVED
FROM ILLUSTRATED CONCEPTUAL IMPROVEMENT PLAN.

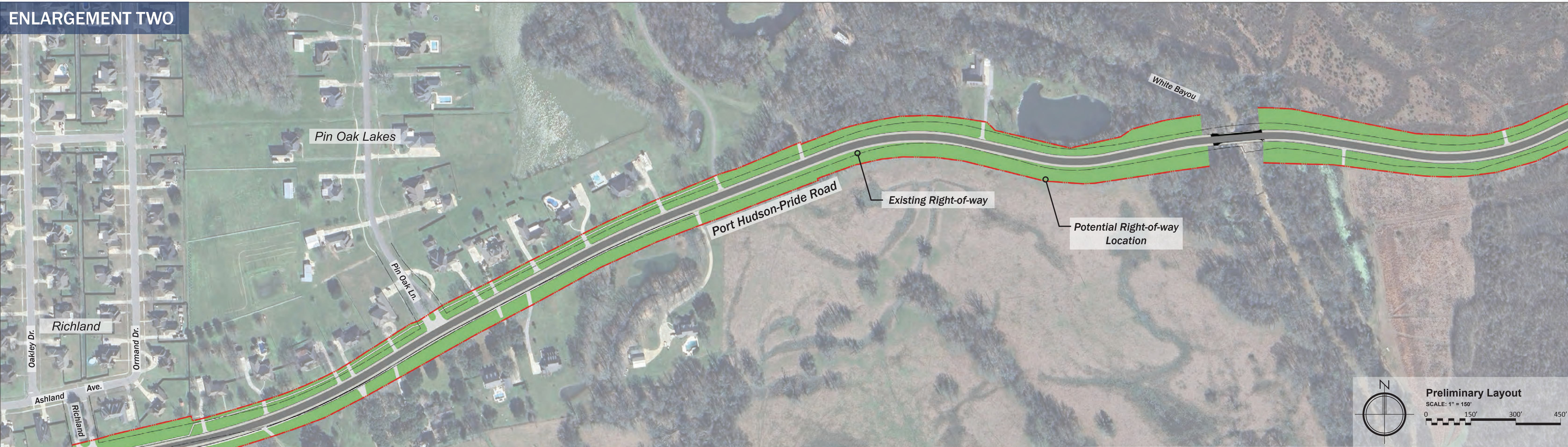


PROPOSED IMPROVEMENT PLAN - OVERALL ALIGNMENT

ENLARGEMENT ONE



ENLARGEMENT TWO



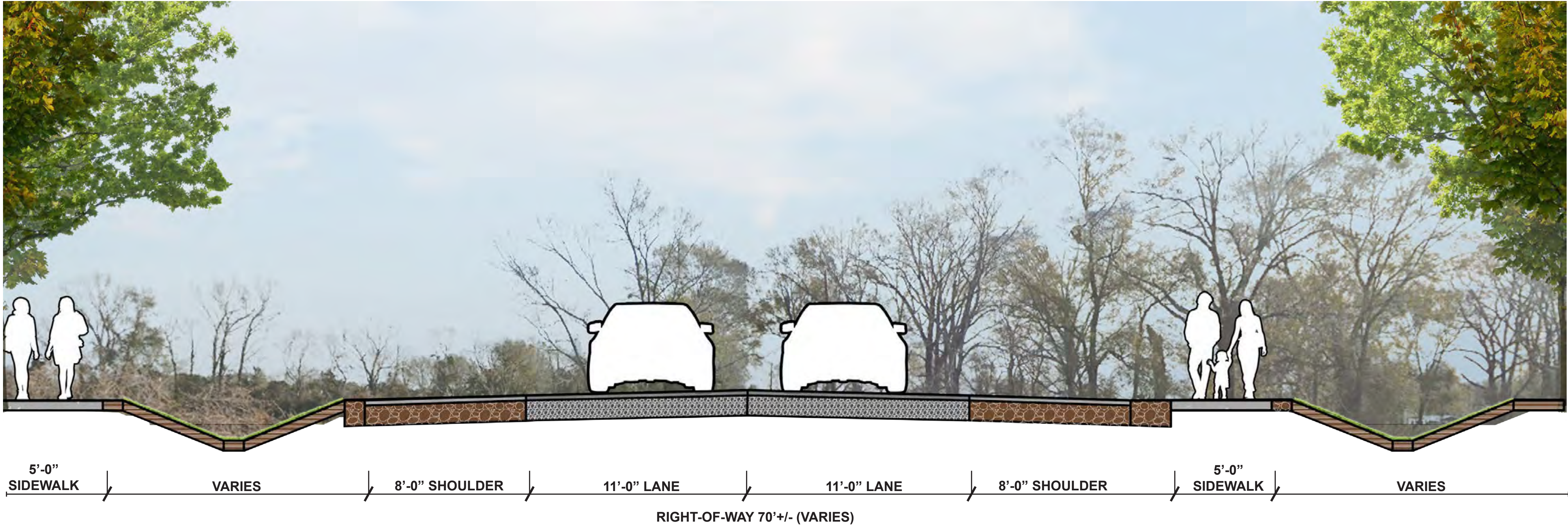
Port Hudson - Pride Road Improvements

COMMUNITY ENGAGEMENT MEETING

April 2025

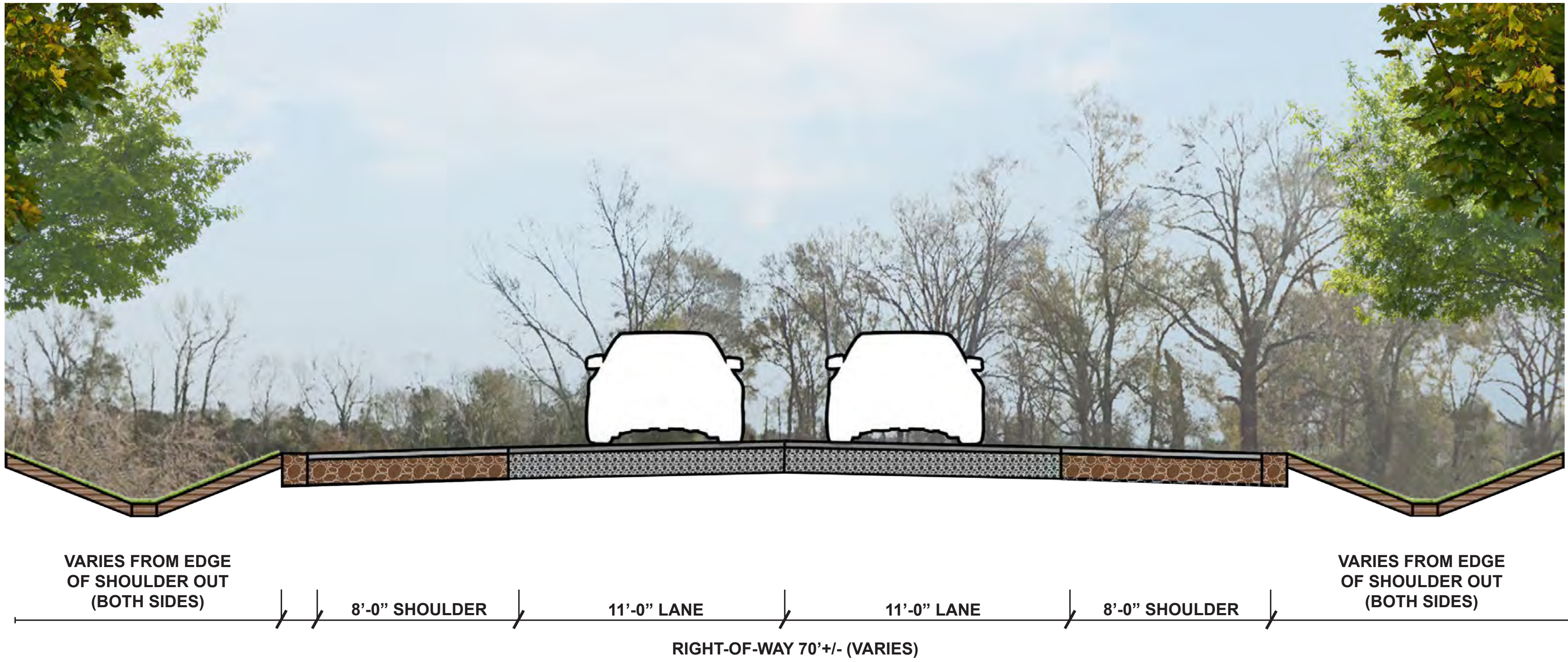
NOTE:
ROADWAY IMPROVEMENTS ARE CONCEPTUAL ONLY AND SUBJECT TO CHANGE BASED
UPON FINAL APPROVAL AND ENGINEERING DESIGN. MOVEBR IS NOT LIABLE FOR THE
USE OR MISUSE, MISINTERPRETATION, OR ERRORS IN ANY CALCULATIONS DERIVED
FROM ILLUSTRATED CONCEPTUAL IMPROVEMENT PLAN.





Typical Section AA - Proposed Improvements (LA 964 TO PIN OAK SUBDIVISION)

Not To Scale



Typical Section BB - Proposed Improvements (PIN OAK SUBDIVISION TO LA 19)

Not To Scale