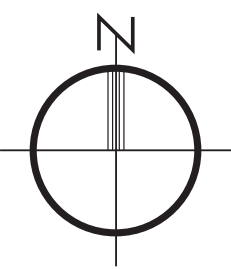
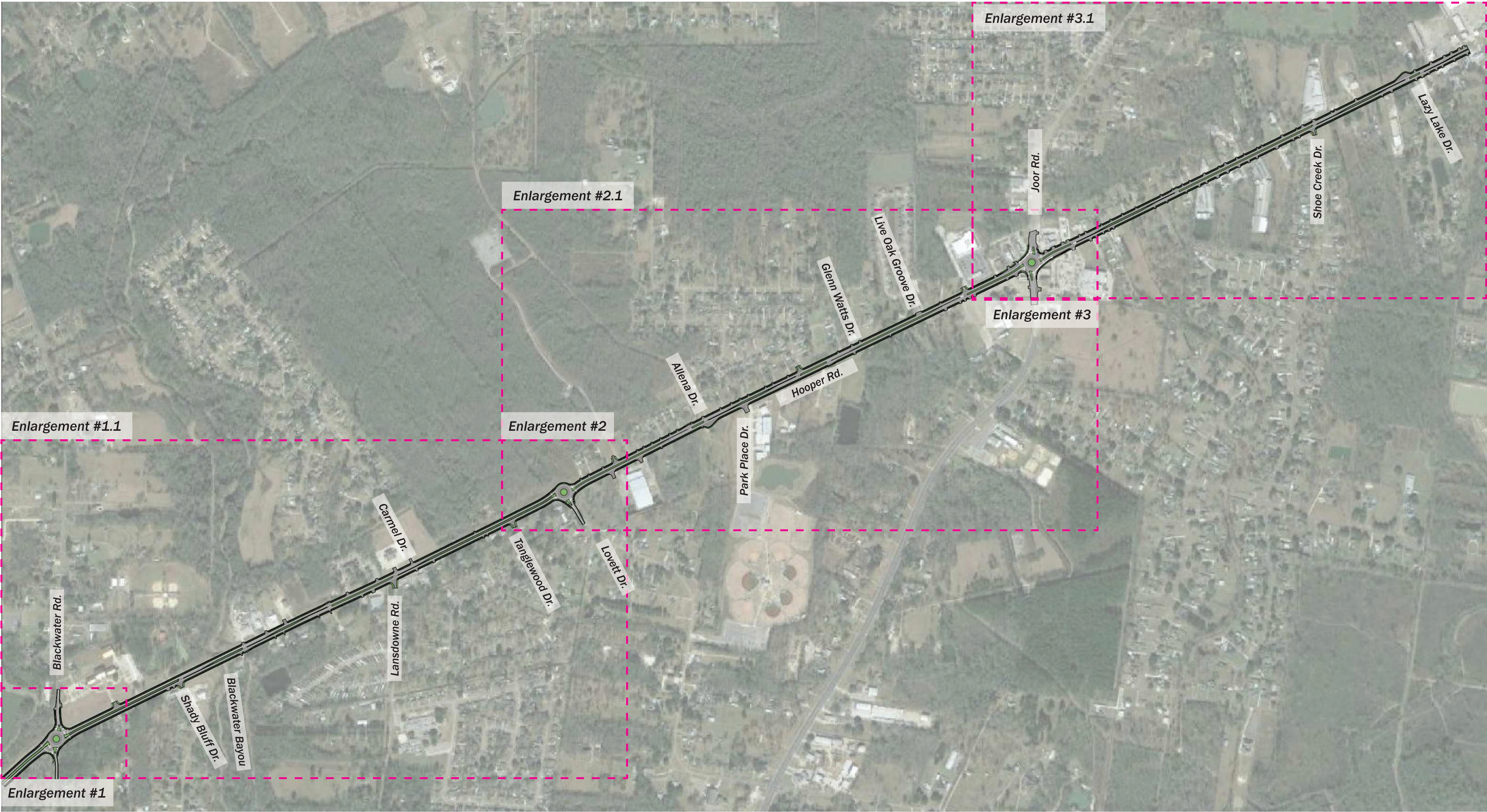


PROPOSED IMPROVEMENT PLAN - OVERALL ALIGNMENT A



NOTE:
ROADWAY IMPROVEMENTS ARE CONCEPTUAL ONLY AND SUBJECT TO CHANGE BASED UPON FINAL APPROVAL
AND ENGINEERING DESIGN. CSRS IS NOT LIABLE FOR THE USE OF MISUSE, MISINTERPRETATION, OR ERRORS IN
ANY CALCULATIONS DERIVED FROM ILLUSTRATED CONCEPTUAL IMPROVEMENT PLAN.
TRAFFIC ANALYSIS IS UNDERWAY TO DETERMINE PROPOSED INTERSECTION TYPE.



PROPOSED IMPROVEMENT PLAN - ALIGNMENT A - Hooper Rd.: Blackwater Rd. to Lovett Rd. Enlargement #1.1



Site Plan

PROPOSED IMPROVEMENT PLAN - ALIGNMENT A - Hooper Rd.: Lovett Rd. to Joor Rd. Enlargement #2.1



Site Plan

NOTE:
ROADWAY IMPROVEMENTS ARE CONCEPTUAL ONLY AND SUBJECT TO CHANGE BASED UPON FINAL APPROVAL AND ENGINEERING DESIGN. CSRS IS NOT LIABLE FOR THE USE OF MISUSE, MISINTERPRETATION, OR ERRORS IN ANY CALCULATIONS DERIVED FROM ILLUSTRATED CONCEPTUAL IMPROVEMENT PLAN.
TRAFFIC ANALYSIS IS UNDERWAY TO DETERMINE PROPOSED INTERSECTION TYPE.

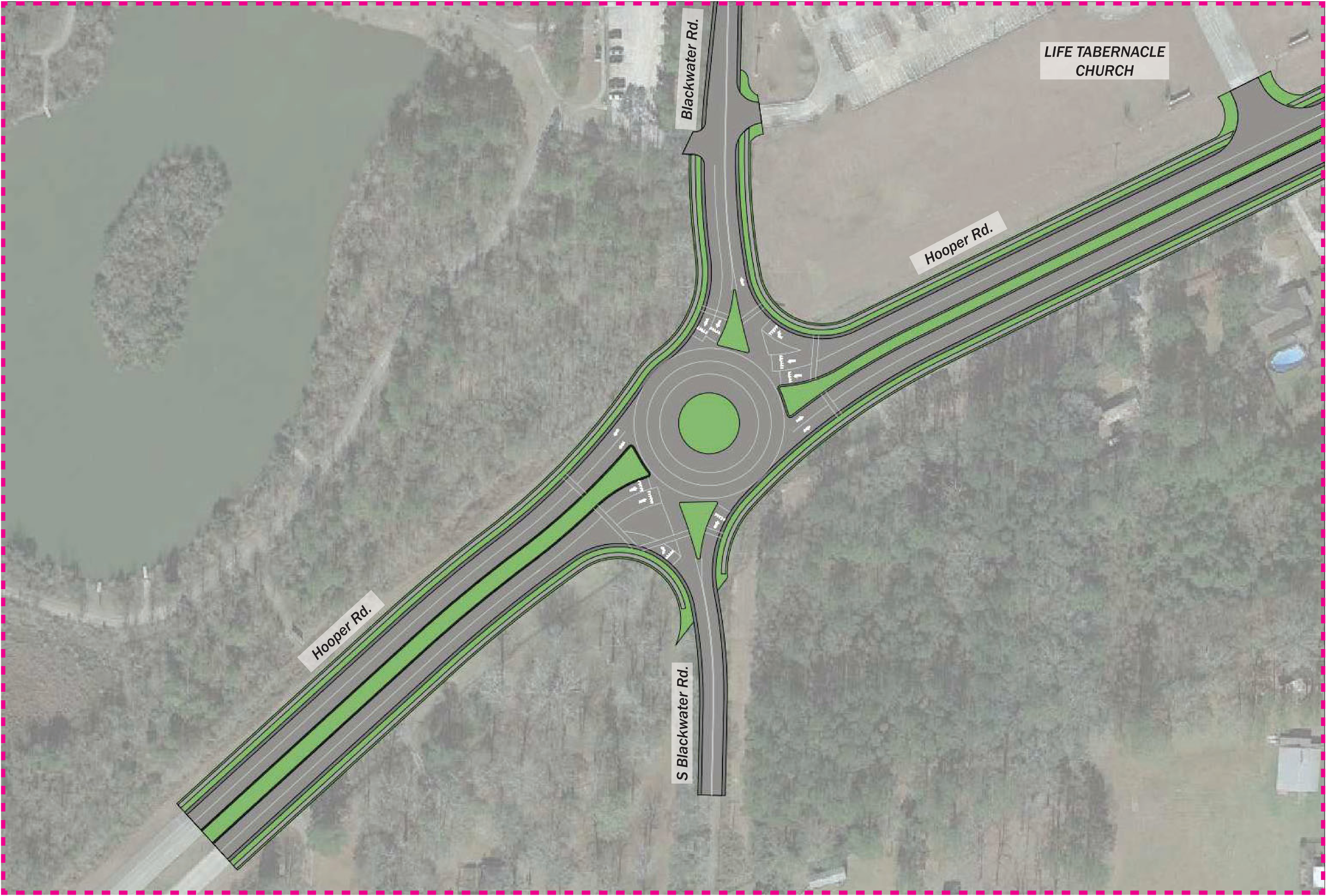
PROPOSED IMPROVEMENT PLAN - ALIGNMENT A - Hooper Rd.: Joor Rd. to Sullivan Rd. Enlargement #3.1



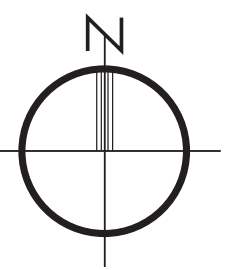
Site Plan

NOTE:
ROADWAY IMPROVEMENTS ARE CONCEPTUAL ONLY AND SUBJECT TO CHANGE BASED UPON FINAL APPROVAL AND ENGINEERING DESIGN. CSRS IS NOT LIABLE FOR THE USE OF MISUSE, MISINTERPRETATION, OR ERRORS IN ANY CALCULATIONS DERIVED FROM ILLUSTRATED CONCEPTUAL IMPROVEMENT PLAN.
TRAFFIC ANALYSIS IS UNDERWAY TO DETERMINE PROPOSED INTERSECTION TYPE.

PROPOSED IMPROVEMENT PLAN A - Hooper Rd. & Blackwater Rd. Enlargement #1



Site Plan

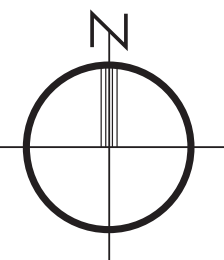


NOTE:
ROADWAY IMPROVEMENTS ARE CONCEPTUAL ONLY AND SUBJECT TO CHANGE BASED UPON FINAL APPROVAL
AND ENGINEERING DESIGN. CSRS IS NOT LIABLE FOR THE USE OF MISUSE, MISINTERPRETATION, OR ERRORS IN
ANY CALCULATIONS DERIVED FROM ILLUSTRATED CONCEPTUAL IMPROVEMENT PLAN.
TRAFFIC ANALYSIS IS UNDERWAY TO DETERMINE PROPOSED INTERSECTION TYPE.

PROPOSED IMPROVEMENT PLAN A - Hooper Rd. & Lovett Rd. Enlargement #2

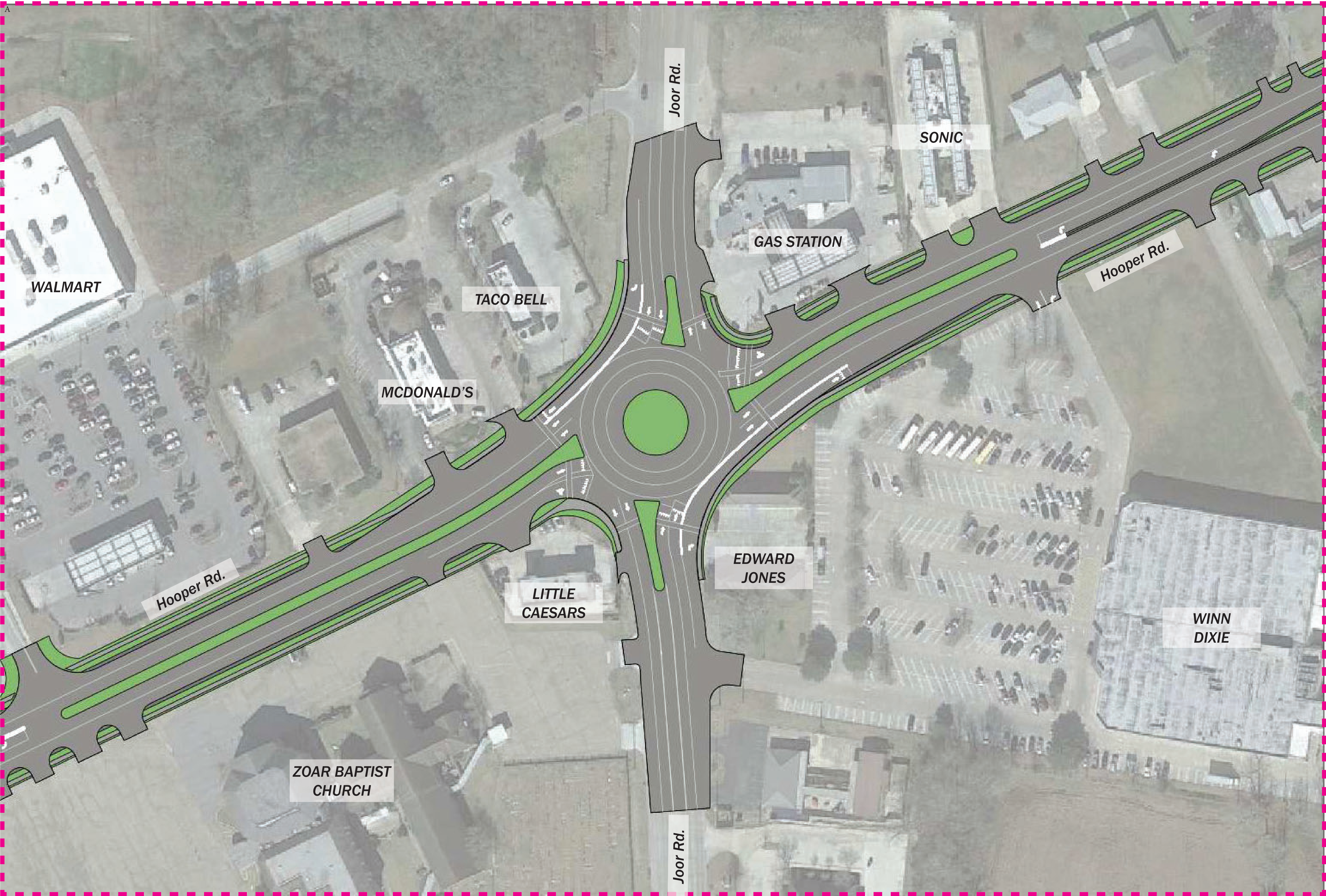


Site Plan

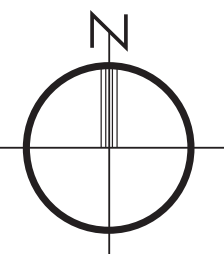


NOTE:
ROADWAY IMPROVEMENTS ARE CONCEPTUAL ONLY AND SUBJECT TO CHANGE BASED UPON FINAL APPROVAL
AND ENGINEERING DESIGN. CSRS IS NOT LIABLE FOR THE USE OF MISUSE, MISINTERPRETATION, OR ERRORS IN
ANY CALCULATIONS DERIVED FROM ILLUSTRATED CONCEPTUAL IMPROVEMENT PLAN.
TRAFFIC ANALYSIS IS UNDERWAY TO DETERMINE PROPOSED INTERSECTION TYPE.

PROPOSED IMPROVEMENT PLAN A - Hooper Rd. & Joor Rd. Enlargement #3



Site Plan



NOTE:
ROADWAY IMPROVEMENTS ARE CONCEPTUAL ONLY AND SUBJECT TO CHANGE BASED UPON FINAL APPROVAL AND ENGINEERING DESIGN. CSRS IS NOT LIABLE FOR THE USE OF MISUSE, MISINTERPRETATION, OR ERRORS IN ANY CALCULATIONS DERIVED FROM ILLUSTRATED CONCEPTUAL IMPROVEMENT PLAN.
TRAFFIC ANALYSIS IS UNDERWAY TO DETERMINE PROPOSED INTERSECTION TYPE.



PROPOSED IMPROVEMENT PLAN - OVERALL ALIGNMENT B



PROPOSED IMPROVEMENT PLAN - ALIGNMENT B - Hooper Rd.: Blakewater Rd. to Lovett Rd. Enlargement #1.1



NOTE:
ROADWAY IMPROVEMENTS ARE CONCEPTUAL ONLY AND SUBJECT TO CHANGE BASED UPON FINAL APPROVAL AND ENGINEERING DESIGN. CSRS IS NOT LIABLE FOR THE USE OF MISUSE, MISINTERPRETATION, OR ERRORS IN ANY CALCULATIONS DERIVED FROM ILLUSTRATED CONCEPTUAL IMPROVEMENT PLAN.
TRAFFIC ANALYSIS IS UNDERWAY TO DETERMINE PROPOSED INTERSECTION TYPE.



PROPOSED IMPROVEMENT PLAN - ALIGNMENT A - Hooper Rd.: Lovett Rd. to Joor Rd. Enlargement #2.1



Site Plan

NOTE:
ROADWAY IMPROVEMENTS ARE CONCEPTUAL ONLY AND SUBJECT TO CHANGE BASED UPON FINAL APPROVAL
AND ENGINEERING DESIGN. CSRS IS NOT LIABLE FOR THE USE OF MISUSE, MISINTERPRETATION, OR ERRORS IN
ANY CALCULATIONS DERIVED FROM ILLUSTRATED CONCEPTUAL IMPROVEMENT PLAN.
TRAFFIC ANALYSIS IS UNDERWAY TO DETERMINE PROPOSED INTERSECTION TYPE.

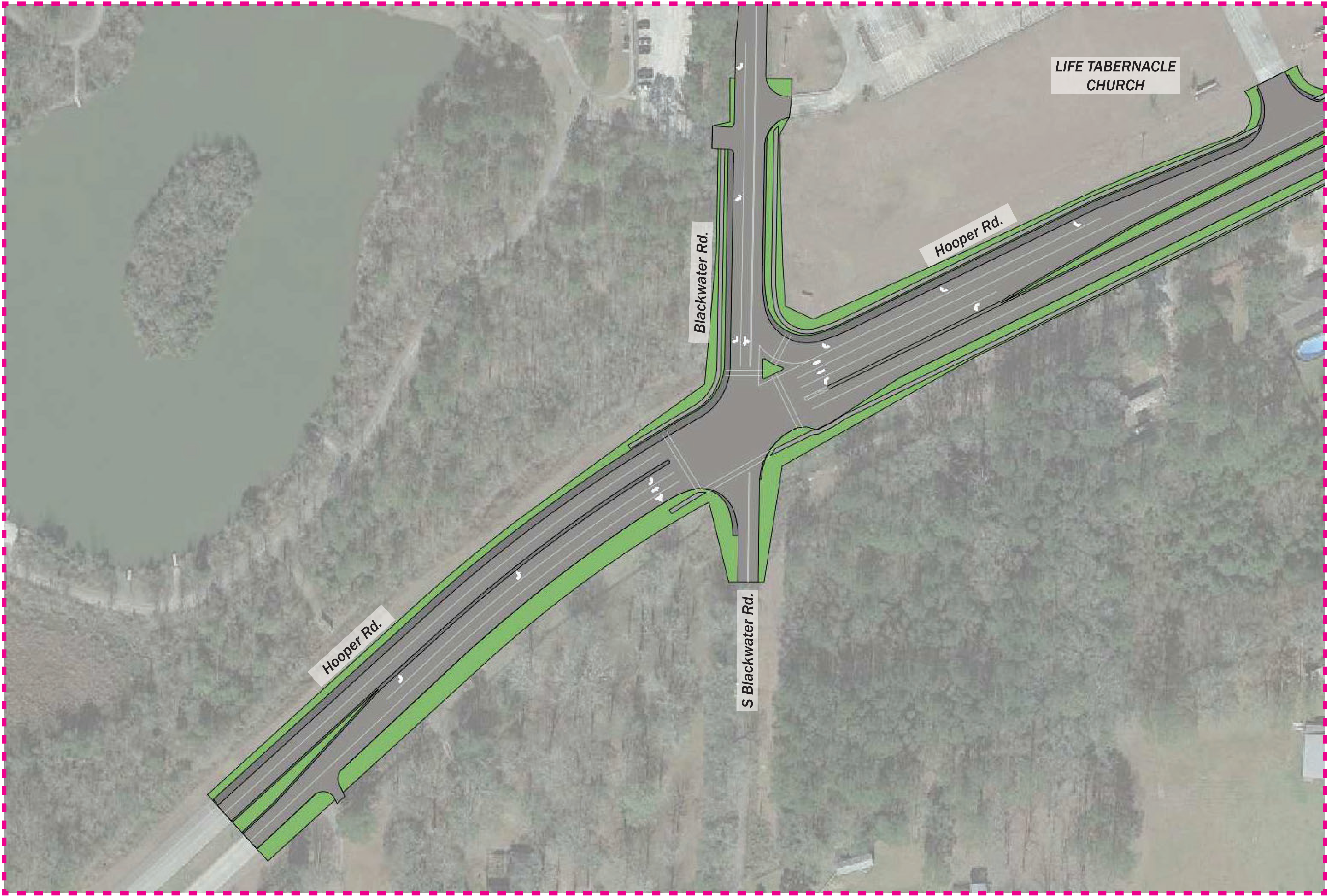
PROPOSED IMPROVEMENT PLAN - ALIGNMENT B - Hooper Rd.: Joor Rd. to Sullivan Rd. Enlargement #3.1



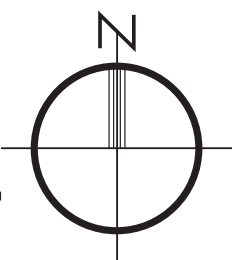
Site Plan

NOTE:
ROADWAY IMPROVEMENTS ARE CONCEPTUAL ONLY AND SUBJECT TO CHANGE BASED UPON FINAL APPROVAL AND ENGINEERING DESIGN. CSRS IS NOT LIABLE FOR THE USE OF MISUSE, MISINTERPRETATION, OR ERRORS IN ANY CALCULATIONS DERIVED FROM ILLUSTRATED CONCEPTUAL IMPROVEMENT PLAN.
TRAFFIC ANALYSIS IS UNDERWAY TO DETERMINE PROPOSED INTERSECTION TYPE.

PROPOSED IMPROVEMENT PLAN B - Hooper Rd. & Blackwater Rd. Enlargement #1



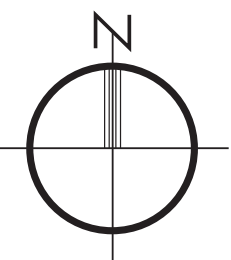
Site Plan



NOTE:
ROADWAY IMPROVEMENTS ARE CONCEPTUAL ONLY AND SUBJECT TO CHANGE BASED UPON FINAL APPROVAL
AND ENGINEERING DESIGN. CSRS IS NOT LIABLE FOR THE USE OF MISUSE, MISINTERPRETATION, OR ERRORS IN
ANY CALCULATIONS DERIVED FROM ILLUSTRATED CONCEPTUAL IMPROVEMENT PLAN.
TRAFFIC ANALYSIS IS UNDERWAY TO DETERMINE PROPOSED INTERSECTION TYPE.

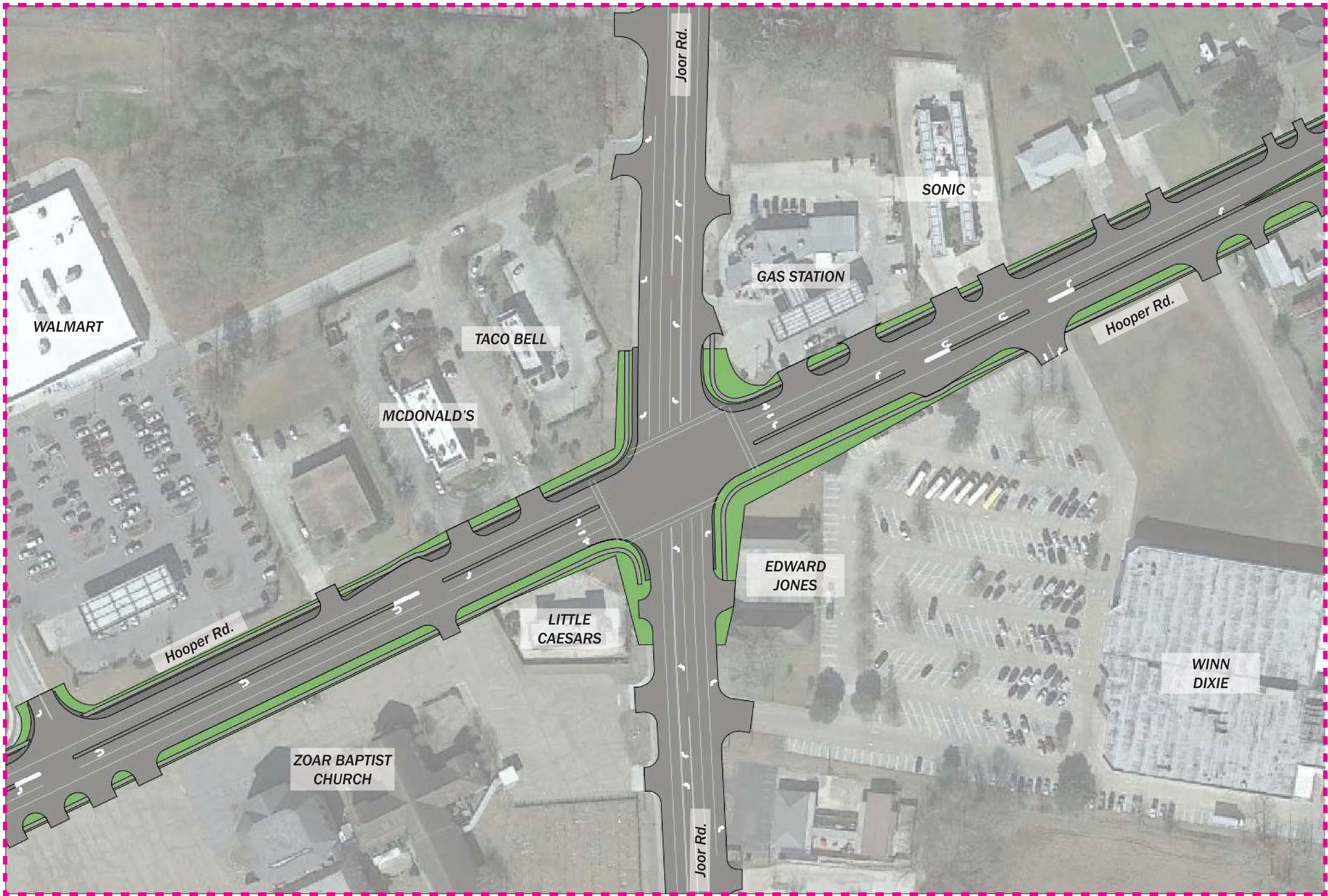


Site Plan

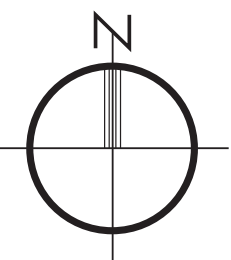


NOTE:
ROADWAY IMPROVEMENTS ARE CONCEPTUAL ONLY AND SUBJECT TO CHANGE BASED UPON FINAL APPROVAL AND ENGINEERING DESIGN. CSRS IS NOT LIABLE FOR THE USE OF MISUSE, MISINTERPRETATION, OR ERRORS IN ANY CALCULATIONS DERIVED FROM ILLUSTRATED CONCEPTUAL IMPROVEMENT PLAN.
TRAFFIC ANALYSIS IS UNDERWAY TO DETERMINE PROPOSED INTERSECTION TYPE.

PROPOSED IMPROVEMENT PLAN B - Hooper Rd. & Joor Rd. Enlargement #3

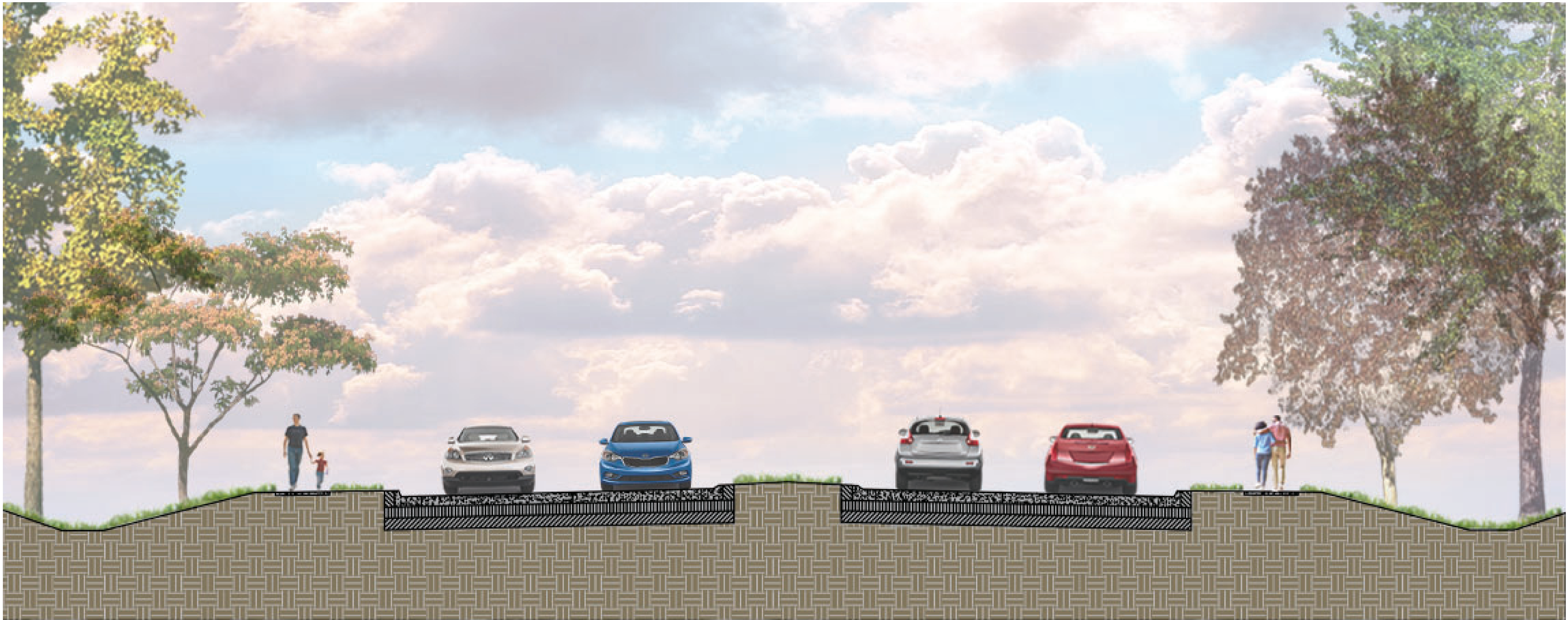


Site Plan



NOTE:
ROADWAY IMPROVEMENTS ARE CONCEPTUAL ONLY AND SUBJECT TO CHANGE BASED UPON FINAL APPROVAL AND ENGINEERING DESIGN. CSRS IS NOT LIABLE FOR THE USE OF MISUSE, MISINTERPRETATION, OR ERRORS IN ANY CALCULATIONS DERIVED FROM ILLUSTRATED CONCEPTUAL IMPROVEMENT PLAN.
TRAFFIC ANALYSIS IS UNDERWAY TO DETERMINE PROPOSED INTERSECTION TYPE.

PROPOSED IMPROVEMENT PLAN - Hooper Rd. Typical Section



	5' Sidewalk		12' Travel Lane	12' Travel Lane	16' Raised Median	12' Travel Lane	12' Travel Lane		5' Sidewalk	
115' R.O.W (TYPICAL)										

Hooper Road Typical Section - Not to Scale, for Illustration Purposes Only

NOTE:
ROADWAY IMPROVEMENTS ARE CONCEPTUAL ONLY AND SUBJECT TO CHANGE BASED UPON FINAL APPROVAL AND ENGINEERING DESIGN. CSRS IS NOT LIABLE FOR THE USE OF MISUSE, MISINTERPRETATION, OR ERRORS IN ANY CALCULATIONS DERIVED FROM ILLUSTRATED CONCEPTUAL IMPROVEMENT PLAN.
TRAFFIC ANALYSIS IS UNDERWAY TO DETERMINE PROPOSED INTERSECTION TYPE.