

CITY OF BATON ROUGE
 AND
 PARISH OF EAST BATON ROUGE
 DEPARTMENT OF TRANSPORTATION & DRAINAGE
 ENGINEERING DIVISION

RIGHT OF WAY PROPERTY MAP OF PROPOSED
 MALL OF LOUISIANA BOULEVARD
 (FORMERLY PAULAT BOULEVARD)
 (FORMERLY PICARDY-PERKINS CONNECTOR)
 PHASE II
 C.P. PROJECT NO. 12-CS-HC-0043

PROJECT AREA

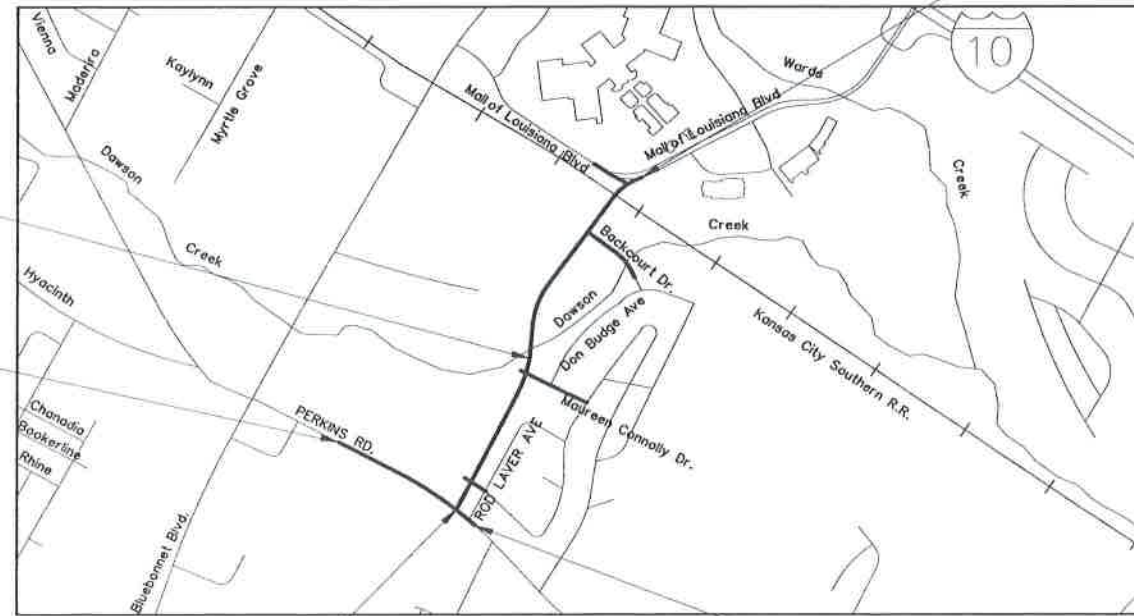


VICINITY MAP

END PROJECT 10/13/2020 11:43:48 AM
 END PHASE II
 STA. 143+22.00
 FILED AND RECORDED
 EAST BATON ROUGE PARISH, LA
 DOUG WELBORN
 CLERK OF COURT AND RECORDER
 CUSTOMER PROVIDED COPY FOR
 CERTIFIED TRUE COPY
 BY *[Signature]*
 DEPUTY CLERK AND RECORDER

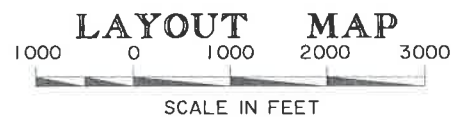
BEGIN PHASE II
STA. 118+58.58

BEGIN STATE PROJECT
NO. H.011683
STA. 513+00.00



BEGIN PROJECT
STA. 100+15.62

END STATE PROJECT
NO. H.011683
STA. 526+30.53

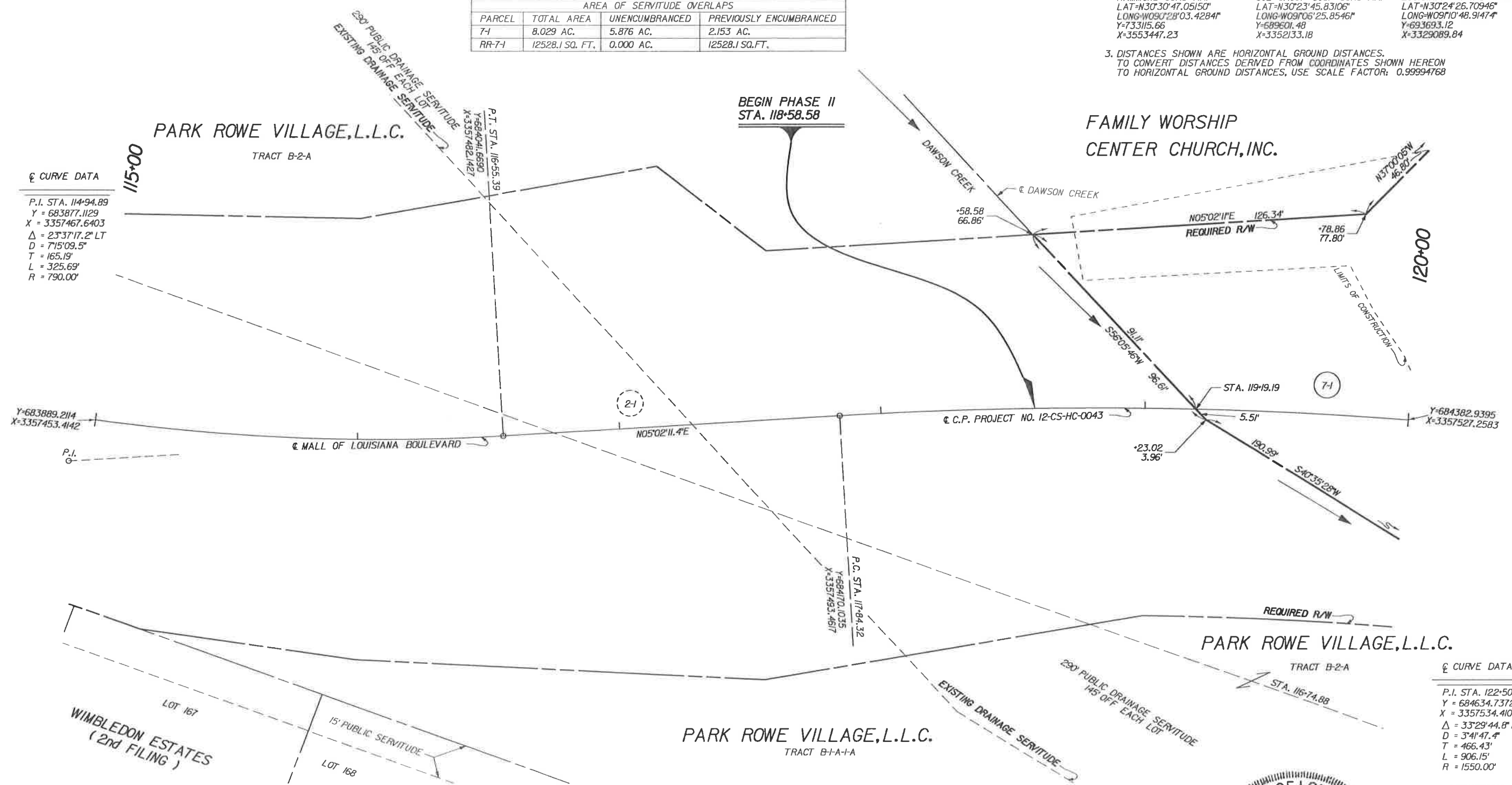


SHEET NUMBER	
EAST BATON ROUGE	BATON ROUGE
PARISH	CITY
PROJECT	12-CS-HC-0043
COMPUTED RHB	10/19/16
CHECKED MLR	SCALE 1"=1000'
DETAILED MLR	
CHECKED MOU	
DATE	
SCALE	
RIGHT OF WAY MAP	
C.P. PROJECT NO. 12-CS-HC-0043	
MALL OF LOUISIANA BOULEVARD	
(PHASE II)	
EAST BATON ROUGE PARISH	
MALL OF LOUISIANA BOULEVARD	
EVANS-GRAVES ENGINEERS	MOU BY
10/10/19	CHANGED NAME OF PROJECT
DATE	REVISION DESCRIPTION
FILE NO.	R/W SHEET NO. TITLE

**GREENSBURG LAND DISTRICT
T8S - R1E
SECTION 57**

- NOTES:
 1. ALL PIPES AND MONUMENTS SHOWN HEREON WERE FOUND.
 2. THE COORDINATES AND BEARINGS SHOWN HEREON ARE BASED ON LOUISIANA STATE PLANE COORDINATE SYSTEM, SOUTH ZONE (NAD 83 (2011) EPOCH 2010.0000) TO CONVERT FROM GRID BEARINGS TO TRUE BEARINGS USE: 0°07'17.6"
 BASE STATIONS:
 HAMM.AJ7833, HAMMOND CORS ARP
 LAT=N30°30'47.05150"
 LONG=W091°28'03.42841"
 Y=733115.66
 X=3553447.23
 SJB.DF0150, SJB GROUP COOP CORS ARP
 LAT=N30°23'45.83106"
 LONG=W091°05'25.85461"
 Y=689601.48
 X=3352133.18
 ILSU.DF5754, LOUISIANA STATE U CORS ARP
 LAT=N30°24'26.70946"
 LONG=W091°10'48.91474"
 Y=693693.12
 X=3329089.84
 3. DISTANCES SHOWN ARE HORIZONTAL GROUND DISTANCES. TO CONVERT DISTANCES DERIVED FROM COORDINATES SHOWN HEREON TO HORIZONTAL GROUND DISTANCES, USE SCALE FACTOR: 0.99994768

AREA OF SERVITUDE OVERLAPS			
PARCEL	TOTAL AREA	UNENCUMBRANCED	PREVIOUSLY ENCUMBRANCED
7-1	8.029 AC.	5.876 AC.	2.153 AC.
RR-7-1	12528.1 SQ. FT.	0.000 AC.	12528.1 SQ. FT.



⊕ CURVE DATA
 P.I. STA. 114+94.89
 Y = 683877.1129
 X = 3357467.6403
 Δ = 23°37'17.2" LT
 D = 715'09.5"
 T = 165.19'
 L = 325.69'
 R = 790.00'

⊕ CURVE DATA
 P.I. STA. 122+50.76
 Y = 684634.7372
 X = 3357534.4102
 Δ = 33°29'44.8" RT
 D = 341'47.4"
 T = 466.43'
 L = 906.15'
 R = 1550.00'

LEGEND

- EXISTING R/W → RIGHT OF WAY LINE
- REQUIRED R/W → RIGHT OF WAY LINE
- EXISTING C. of A. → CONTROL OF ACCESS
- REQUIRED C. of A. → CONTROL OF ACCESS
- EXIST R/W & EXIST. C. of A. → RIGHT OF WAY & CONTROL OF ACCESS
- REQ'D R/W & REQ'D C. of A. → RIGHT OF WAY & CONTROL OF ACCESS
- LIMITS OF CONSTRUCTION
- LOT LINE
- APPARENT PROPERTY LINE
- EXISTING SERVITUDE LINE
- SECTION LINE

PARCEL	OWNER	ACQUISITION	AREA
RR-7-1			12528.1 SQ. FT.
7-1-D-2			5215.1 SQ. FT.
7-1-D-1	FAMILY WORSHIP CENTER CHURCH, INC.	ORIG. 269 BNDL. 10380 FEB. 17, 1983	32048.0 SQ. FT.
PS-7-1			2013.3 SQ. FT.
7-1-C-1			0.248 AC.
7-1			8.029 AC.

ROBERT H. BROOKS III
REG. No. 4712
REGISTERED PROFESSIONAL
LAND SURVEYOR

MAX O. USREY III
REG. No. 4787
REGISTERED PROFESSIONAL
LAND SURVEYOR

10/19/16

SHEET NUMBER		EAST BATON ROUGE		BATON ROUGE		12-CS-HC-0043
COMPUTED	R. BROOKS	PARISH		CITY		PROJECT
CHECKED	M. USREY					
DATE	10/19/16					
SCALE	1" = 20'					

RIGHT OF WAY MAP
 C.P. PROJECT NO. 12-CS-HC-0043
 MALL OF LOUISIANA BOULEVARD
 (PHASE II)
 EAST BATON ROUGE PARISH
 MALL OF LOUISIANA BOULEVARD

EVANS-GRAVES ENGINEERS

DATE	BY	REVISION DESCRIPTION
10/10/19	MOU	CHANGED NAME OF PROJECT
07/19/17	MOU	REVISED AREAS FROM ACRES TO SQUARE FEET
		REVISED AREA PARCEL 7-1-D-1

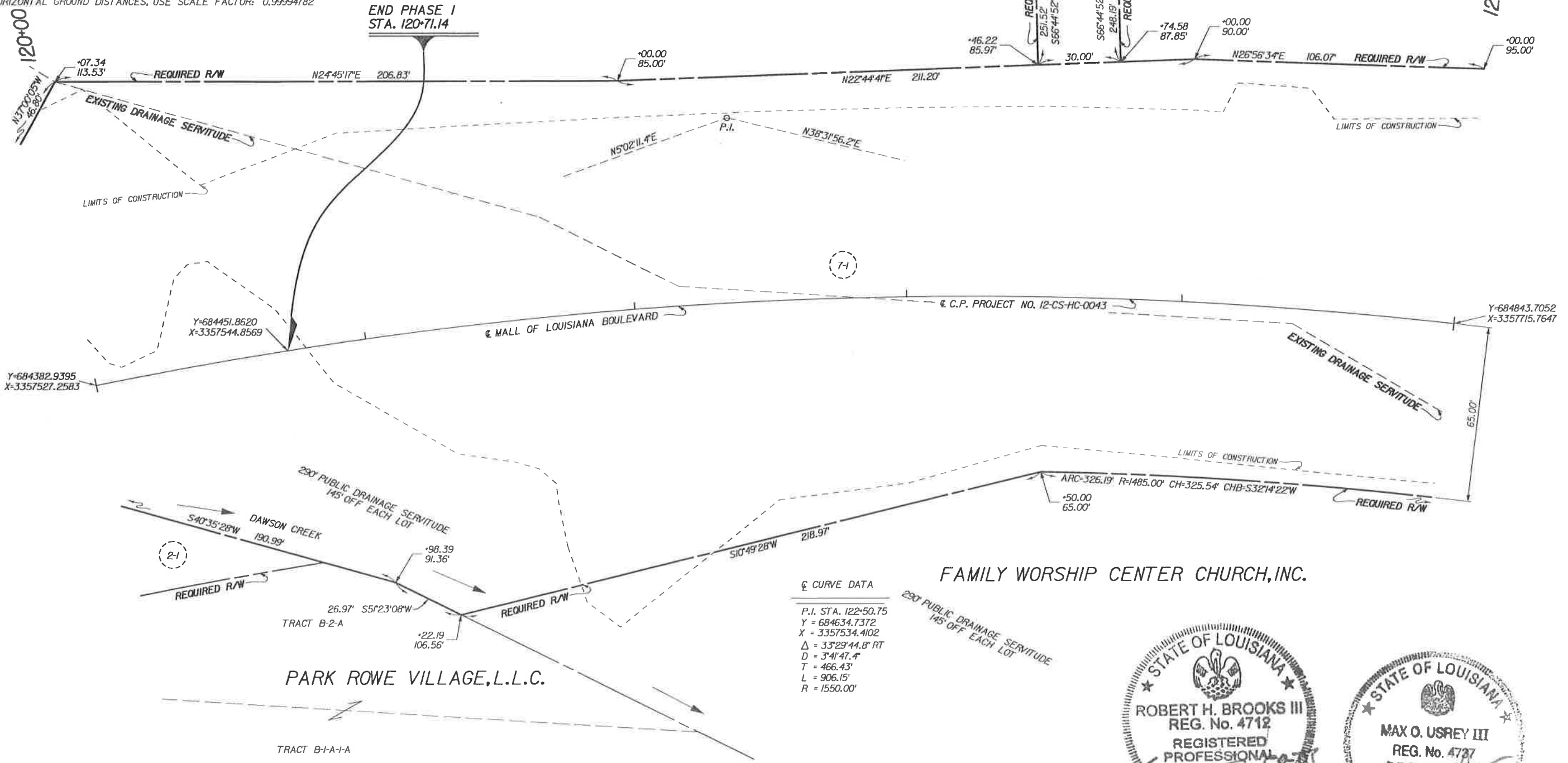
FILE NO. _____ R/W SHEET NO. 7

2/26/2020 10:44
 RECORDATION SET
 F:\00 PROJECTS\12-500\Sheet Sets\RIGHT OF WAY\RECORDATION Set Phase 2\12500 Sheet07_RW_ph2.dgn

GREENSBURG LAND DISTRICT
T8S - R1E
SECTION 57

FAMILY WORSHIP CENTER CHURCH, INC.

- NOTES:
1. ALL PIPES AND MONUMENTS SHOWN HEREON WERE FOUND.
2. THE COORDINATES AND BEARINGS SHOWN HEREON ARE BASED ON LOUISIANA STATE PLANE COORDINATE SYSTEM, SOUTH ZONE (NAD 83 (2011) EPOCH 2010.0000) TO CONVERT FROM GRID BEARINGS TO TRUE BEARINGS USE: 0°07'18.4"
- BASE STATIONS:
- | | | |
|---|--|--|
| HAMM, A17833,
HAMMOND CORS ARP
LAT=N30°30'47.05150"
LONG=W090°28'03.4284"
Y=733115.66
X=3553447.23 | SJBLDF8160
SJB GROUP COOP CORS ARP
LAT=N30°23'45.83106"
LONG=W09°06'25.8546"
Y=689601.48
X=3352133.18 | ILSU, DF5754
LOUISIANA STATE U CORS ARP
LAT=N30°24'26.70946"
LONG=W09°10'48.9147"
Y=6933693.12
X=3329089.84 |
|---|--|--|
3. DISTANCES SHOWN ARE HORIZONTAL GROUND DISTANCES. TO CONVERT DISTANCES DERIVED FROM COORDINATES SHOWN HEREON TO HORIZONTAL GROUND DISTANCES, USE SCALE FACTOR: 0.99994782

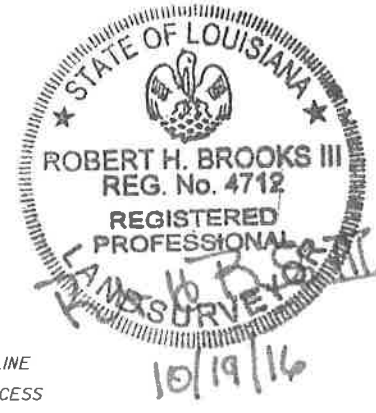


FAMILY WORSHIP CENTER CHURCH, INC.

PARK ROWE VILLAGE, L.L.C.

LEGEND

- EXISTING R/W → RIGHT OF WAY LINE
- EXISTING C. of A. → CONTROL OF ACCESS
- EXIST R/W & EXIST C. of A. → RIGHT OF WAY & CONTROL OF ACCESS
- LIMITS OF CONSTRUCTION
- LOT LINE
- APPARENT PROPERTY LINE
- EXISTING SERVITUDE LINE
- SECTION LINE



F:\00_PROJECTS\12-500_Sheet_Sets\RIGHT OF WAY\RECORDATION Set Phase 2\12500 Sheet08 RW_ph2.dgn

RECORDATION SET

2/26/2020 10:44

PARCEL	OWNER	ACQUISITION	AREA

SHEET NUMBER	EAST BATON ROUGE
COMPUTED BY: R. BROOKS III	BATON ROUGE
CHECKED BY: M. USREY	CITY
DATE: 10/19/16	PROJECT: 12-CS-HC-0043
SCALE: 1" = 20'	
RIGHT OF WAY MAP	
C.P. PROJECT NO. 12-CS-HC-0043	
MALL OF LOUISIANA BOULEVARD (PHASE II)	
EAST BATON ROUGE PARISH	
MALL OF LOUISIANA BOULEVARD	
EVANS-GRAVES ENGINEERS	
MOU	
BY:	
CHANGED NAME OF PROJECT	
DATE	

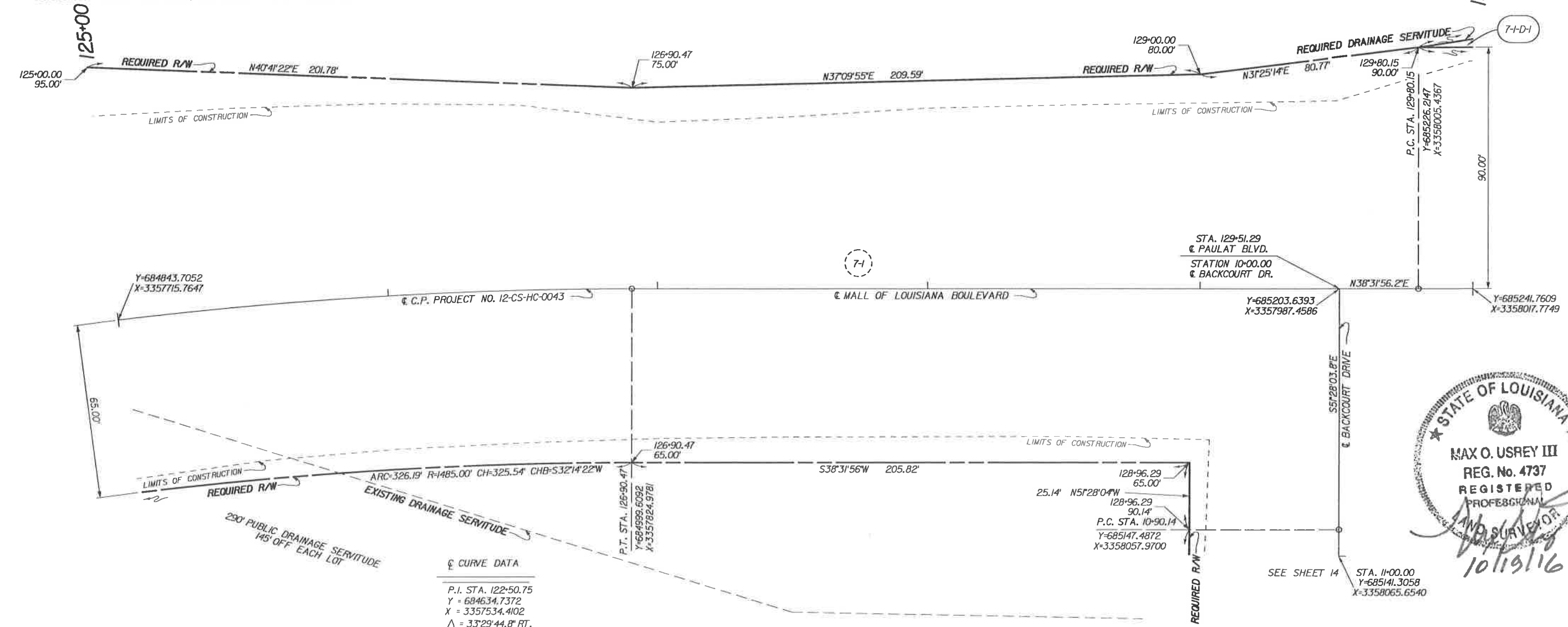
NOTES:
 1. ALL PIPES AND MONUMENTS SHOWN HEREON WERE FOUND.
 2. THE COORDINATES AND BEARINGS SHOWN HEREON ARE BASED ON LOUISIANA STATE PLANE COORDINATE SYSTEM, SOUTH ZONE (NAD 83 (2011) EPOCH 2010.0000) TO CONVERT FROM GRID BEARINGS TO TRUE BEARINGS USE: 0°07'19.8"

BASE STATIONS:

HAMM,AJ7833, HAMMOND CORS ARP LAT=N30°30'47.05150" LONG=W091°28'03.42841" Y=733115.66 X=33553447.23	SJB,DFB160 SJB GROUP COOP CORS ARP LAT=N30°23'45.83106" LONG=W091°06'25.85461" Y=689601.48 X=3352133.18	ILSU,DF5754 LOUISIANA STATE U CORS ARP LAT=N30°24'26.70946" LONG=W091°0'48.91474" Y=693693.12 X=3329089.84
--	--	---

GREENSBURG LAND DISTRICT
 T8S - R1E
 SECTION 57

FAMILY WORSHIP CENTER CHURCH, INC.

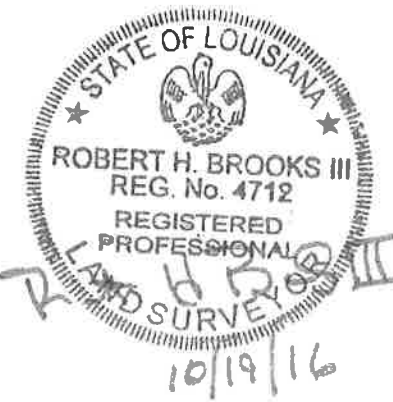
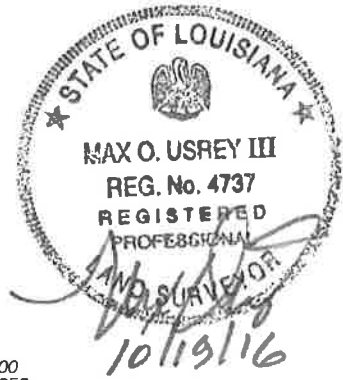
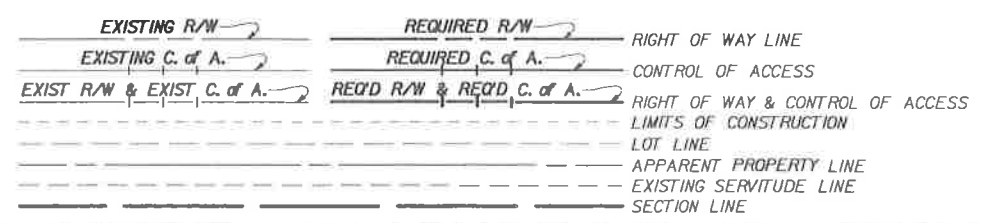


☉ CURVE DATA

P.I. STA. 122+50.75
Y = 684634.7372
X = 3357534.4102
Δ = 33°29'44.8\" RT.
D = 341'47.4'
T = 466.43'
L = 906.15'
R = 1550.00'

FAMILY WORSHIP CENTER CHURCH, INC.

LEGEND



PARCEL	OWNER	ACQUISITION	AREA

SHEET NUMBER	
COMPUTED	R. BROOKS
CHECKED	M. USREY
DETAILED	M. USREY
CHECKED	M. USREY
DATE	10/19/16
SCALE	1" = 20'
PARISH	EAST BATON ROUGE
CITY	BATON ROUGE
PROJECT	12-CS-HC-0043
RIGHT OF WAY MAP	
C.P. PROJECT NO.	12-CS-HC-0043
MALL OF LOUISIANA BOULEVARD	
(PHASE 1)	
EAST BATON ROUGE PARISH	
MALL OF LOUISIANA BOULEVARD	
EVANS-GRAVES ENGINEERS	
MOU BY	
CHANGED NAME OF PROJECT	
REVISION DESCRIPTION	
DATE	10/10/19

10:44

2/26/2020

RECORDATION SET

F:\00_PROJECTS\12-500\Sheet_Sets\RIGHT OF WAY\RECORDATION Set Phase 2\12500 Sheet10_RW_ph2.dgn

NOTES:
1. ALL PIPES AND MONUMENTS SHOWN HEREON WERE FOUND.

2. THE COORDINATES AND BEARINGS SHOWN HEREON ARE BASED ON LOUISIANA STATE PLANE COORDINATE SYSTEM, SOUTH ZONE (NAD 83 (2011) EPOCH 2010.0000) TO CONVERT FROM GRID BEARINGS TO TRUE BEARINGS USE: 007'21.6"

BASE STATIONS:

HAMM.AJ7833,
HAMMOND CORS ARP
LAT=N30°30'47.05150"
LONG=W093°28'03.4284"
Y=733115.66
X=33553447.23

SJBLDFB160
SJB GROUP COOP CORS ARP
LAT=N30°23'45.83106"
LONG=W091°06'25.8546"
Y=689601.48
X=3352133.18

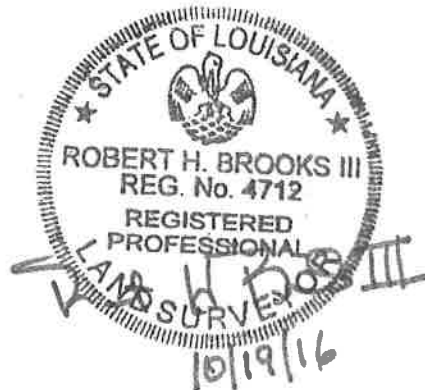
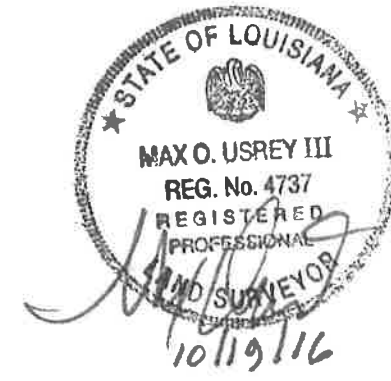
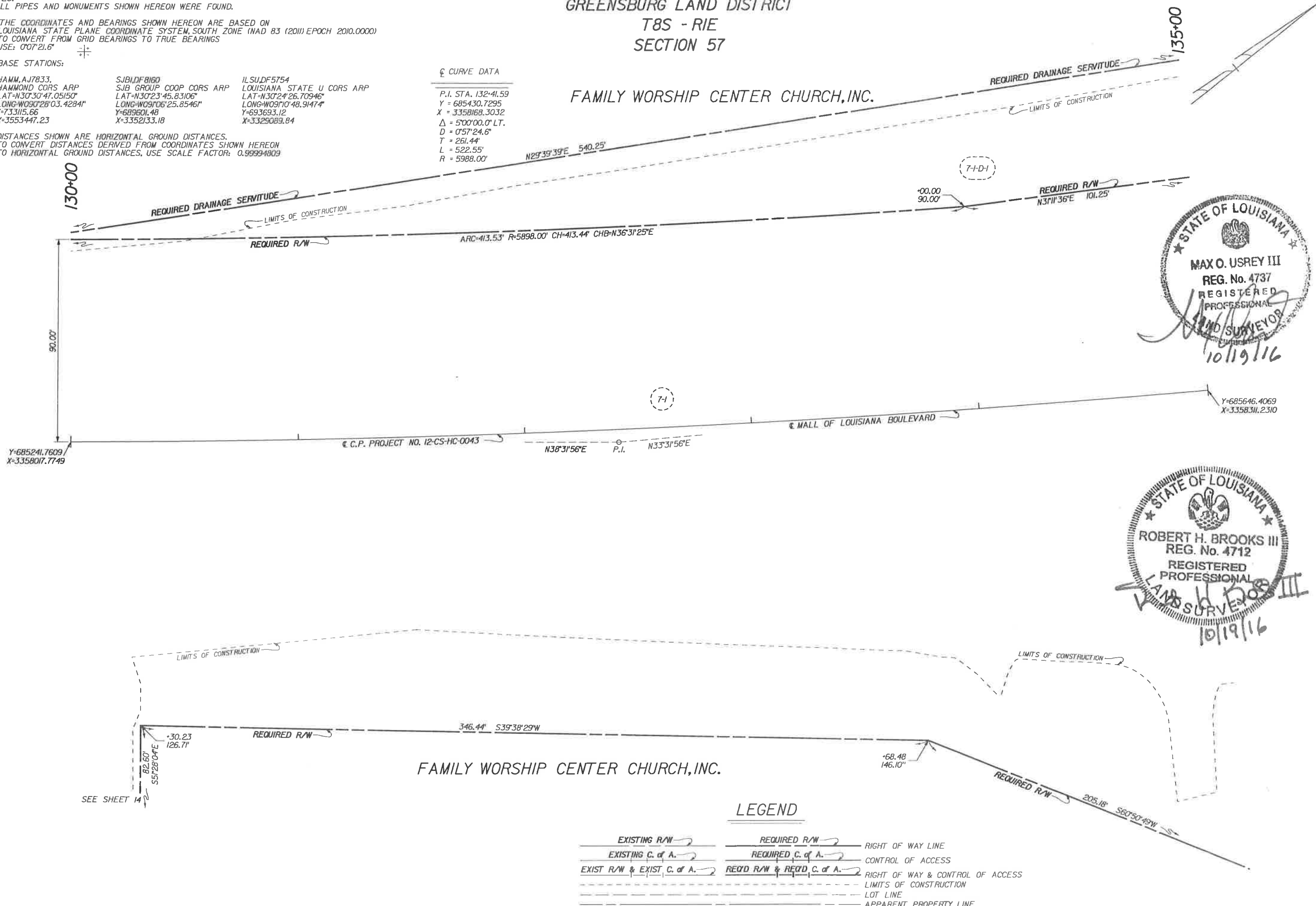
ILSU.DF5754
LOUISIANA STATE U CORS ARP
LAT=N30°24'26.70946"
LONG=W091°0'48.91474"
Y=693693.12
X=3325089.84

☉ CURVE DATA

P.I. STA. 132+41.59
Y = 685430.7295
X = 3358168.3032
Δ = 5'00'00.0" LT.
D = 0'57'24.6"
T = 261.44'
L = 522.55'
R = 5988.00'

GREENSBURG LAND DISTRICT T8S - R1E SECTION 57

FAMILY WORSHIP CENTER CHURCH, INC.



LEGEND

- EXISTING R/W → RIGHT OF WAY LINE
- EXISTING C. of A. → CONTROL OF ACCESS
- EXIST R/W & EXIST C. of A. → RIGHT OF WAY & CONTROL OF ACCESS
- LIMITS OF CONSTRUCTION
- LOT LINE
- APPARENT PROPERTY LINE
- EXISTING SERVITUDE LINE
- SECTION LINE
- REQUIRED R/W → RIGHT OF WAY LINE
- REQUIRED C. of A. → CONTROL OF ACCESS
- REQ'D R/W & REQ'D C. of A. → RIGHT OF WAY & CONTROL OF ACCESS

PARCEL	OWNER	ACQUISITION	AREA

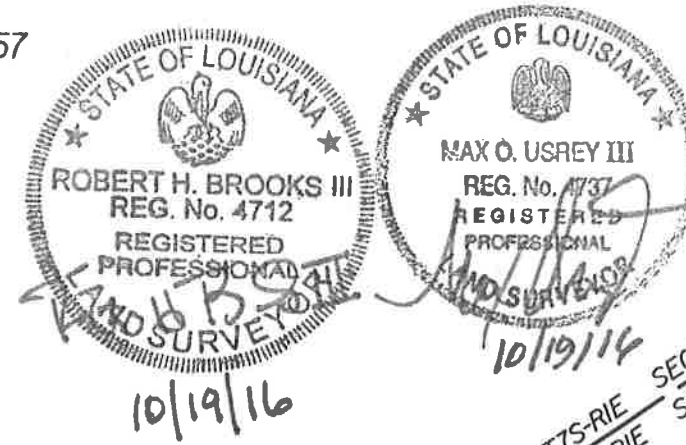
FILE NO. R/W SHEET NO. 10

SHEET NUMBER	EAST BATON ROUGE
COMPUTED BY	BATON ROUGE
CHECKED BY	PROJECT
DATE	12-CS-HC-0043
SCALE	1" = 20'
RIGHT OF WAY MAP	
C.P. PROJECT NO.	MALL OF LOUISIANA BOULEVARD (PHASE II)
EVANS-GRAVES ENGINEERS	EAST BATON ROUGE PARISH
CHANGED NAME OF PROJECT	MALL OF LOUISIANA BOULEVARD
DATE	10/10/19
BY	

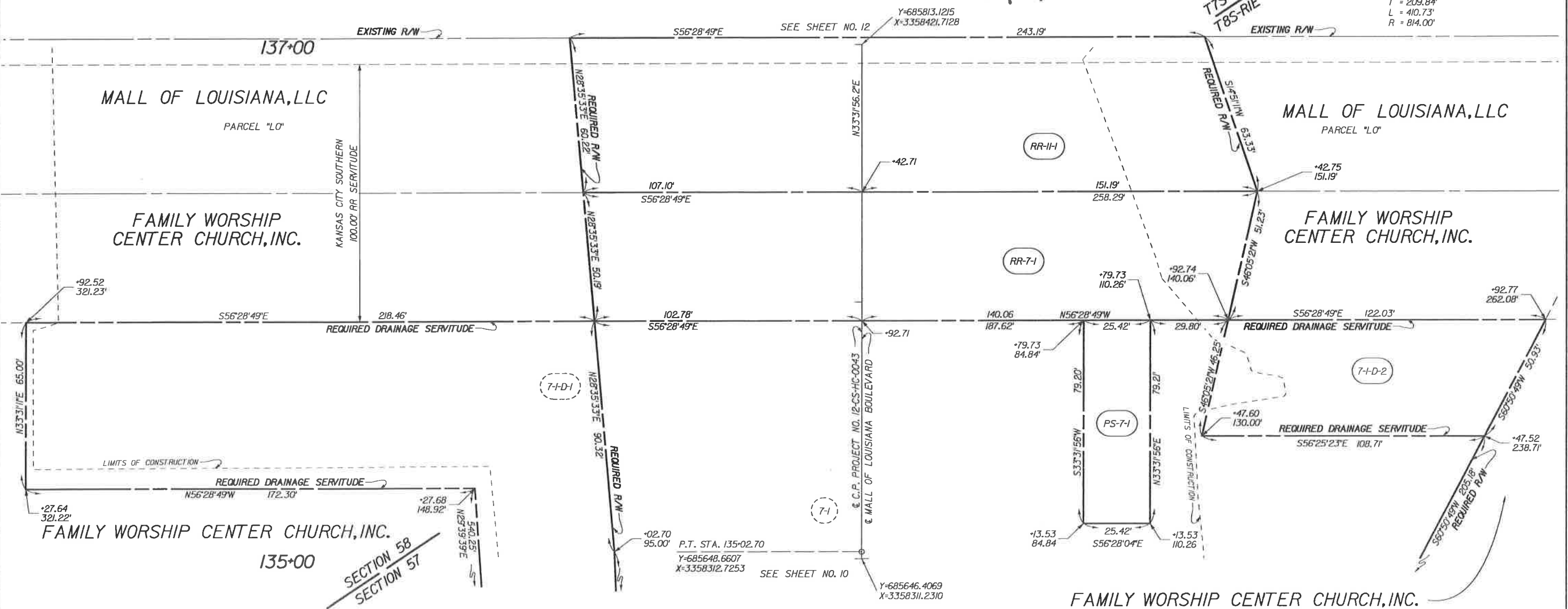
F:\00 PROJECTS\12-500\Sheet Sets\RIGHT OF WAY\RECORDATION Set Phase 2\12500 Sheet11_RW_ph2.dgn

NOTES:
 1. ALL PIPES AND MONUMENTS SHOWN HEREON WERE FOUND.
 2. THE COORDINATES AND BEARINGS SHOWN HEREON ARE BASED ON LOUISIANA STATE PLANE COORDINATE SYSTEM, SOUTH ZONE (NAD 83 (2011) EPOCH 2010.0000) TO CONVERT FROM GRID BEARINGS TO TRUE BEARINGS USE: 0°07'22.5" \pm
 BASE STATIONS:
 HAMM.AJ7833, HAMMOND CORS ARP, LAT=N30°30'47.05150", LONG=W090°28'03.4284", Y=733115.66, X=3553447.23
 SJB.DF8160, SJB GROUP COOP CORS ARP, LAT=N30°23'45.83106", LONG=W091°06'25.8546", Y=689801.48, X=3352133.18
 ILSU.DF5754, LOUISIANA STATE U CORS ARP, LAT=N30°24'26.70946", LONG=W091°10'48.91474", Y=693693.12, X=3329089.84
 3. DISTANCES SHOWN ARE HORIZONTAL GROUND DISTANCES. TO CONVERT DISTANCES DERIVED FROM COORDINATES SHOWN HEREON TO HORIZONTAL GROUND DISTANCES, USE SCALE FACTOR: 0.99994819

GREENSBURG LAND DISTRICT
 T7S-RIE & T8S-RIE
 SECTION 58 SECTION 57

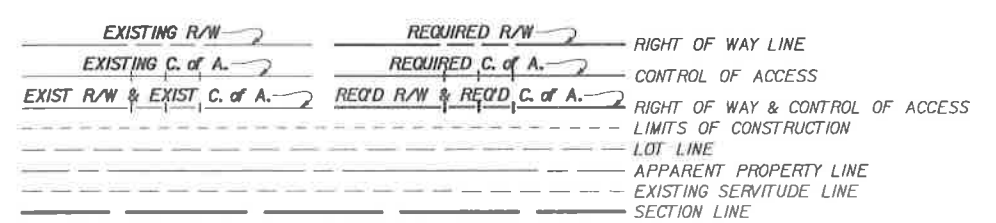


⊕ CURVE DATA
 P.I. STA. 139+27.37
 Y = 686002.6482
 X = 3358547.3113
 Δ = 28°54'38.1" RT.
 D = 702'19.7"
 T = 209.84'
 L = 410.73'
 R = 814.00'



AREA OF SERVITUDE OVERLAPS			
PARCEL	TOTAL AREA	UNENCUMBRANCED	PREVIOUSLY ENCUMBRANCED
RR-II-I	15044.9 SQ. FT.	0.0 SQ. FT.	15044.9 SQ. FT.

LEGEND



PARCEL	OWNER	ACQUISITION	AREA
RR-II-I	MALL OF LOUISIANA, LLC	ORIG. 71 BNDL. 10679 APRIL 10, 1996 ORIG. 86 BNDL. 10679 APRIL 10, 1996	15044.9 SQ. FT.

SHEET NUMBER	EAST BATON ROUGE	PARISH	BATON ROUGE	CITY	PROJECT
COMPUTED BY	R. BROOKS	DATE	10/19/16	SCALE	1" = 20'
CHECKED BY	M. USREY	DATE		SCALE	
DETAILED BY	M. USREY	DATE		SCALE	
CHECKED BY	M. USREY	DATE		SCALE	
RIGHT OF WAY MAP C.P. PROJECT NO. 12-CS-HC-0043 MALL OF LOUISIANA BOULEVARD (PHASE II) EAST BATON ROUGE PARISH MALL OF LOUISIANA BOULEVARD					
EVANS-GRAVES ENGINEERS					
CHANGED NAME OF PROJECT	MOU	BY		DATE	
REVISOR	MOU	BY		DATE	
10/10/19					
07/12/17					

GREENSBURG LAND DISTRICT T7S - R1E SECTION 58

NOTES:
 1. ALL PIPES AND MONUMENTS SHOWN HEREON WERE FOUND.
 2. THE COORDINATES AND BEARINGS SHOWN HEREON ARE BASED ON LOUISIANA STATE PLANE COORDINATE SYSTEM, SOUTH ZONE (NAD 83 (2011) EPOCH 2010.0000) TO CONVERT FROM GRID BEARINGS TO TRUE BEARINGS USE: 0°07'23.7"

BASE STATIONS:
 HAMM, AJ7833, SJBLDF8150 ILSUDF5754
 HAMMOND CORS ARP SJB GROUP COOP CORS ARP LOUISIANA STATE U CORS ARP
 LAT=N30°30'47.05150" LAT=N30°23'45.83106" LAT=N30°24'26.70946"
 LONG=W090°28'03.42841" LONG=W090°06'25.85461" LONG=W090°10'48.91474"
 Y=733115.66 Y=689601.48 Y=693693.12
 X=3553447.23 X=3352133.18 X=3329089.84

3. DISTANCES SHOWN ARE HORIZONTAL GROUND DISTANCES. TO CONVERT DISTANCES DERIVED FROM COORDINATES SHOWN HEREON TO HORIZONTAL GROUND DISTANCES, USE SCALE FACTOR: 0.99994829

LEGEND

- EXISTING R/W → RIGHT OF WAY LINE
- EXISTING C. of A. → CONTROL OF ACCESS
- EXIST R/W & EXIST C. of A. → RIGHT OF WAY & CONTROL OF ACCESS
- REQUIRE R/W → REQUIRED R/W
- REQUIRE C. of A. → REQUIRED C. of A.
- REQ'D R/W & REQ'D C. of A. → REQ'D R/W & REQ'D C. of A.
- LIMITS OF CONSTRUCTION
- LOT LINE
- APPARENT PROPERTY LINE
- EXISTING SERVIDUTE LINE
- SECTION LINE

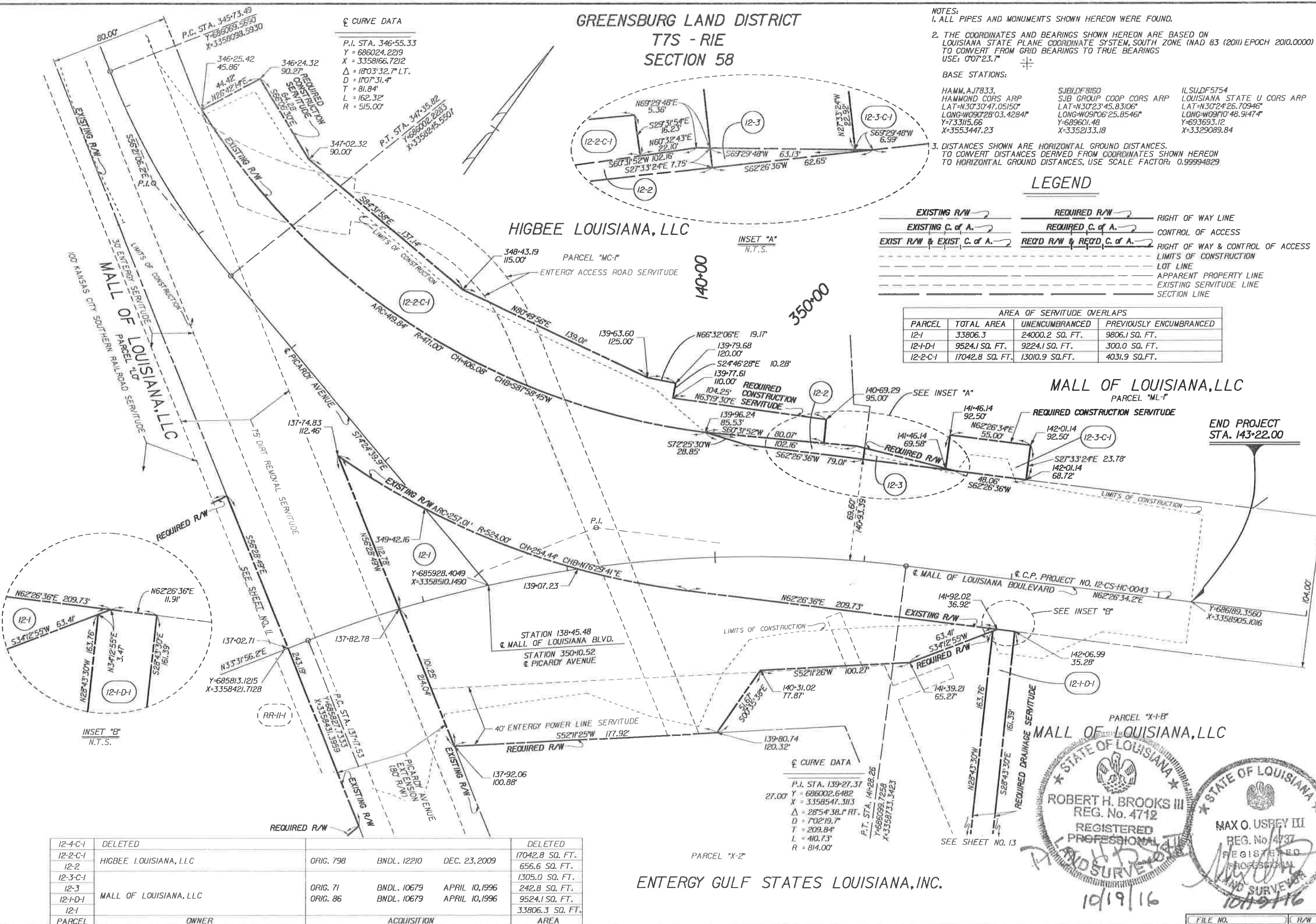
AREA OF SERVIDUTE OVERLAPS			
PARCEL	TOTAL AREA	UNENCUMBRANCED	PREVIOUSLY ENCUMBRANCED
12-1	33806.3	24000.2 SQ. FT.	9806.1 SQ. FT.
12-1-D1	9524.1 SQ. FT.	9224.1 SQ. FT.	300.0 SQ. FT.
12-2-C-1	17042.8 SQ. FT.	13010.9 SQ. FT.	4031.9 SQ. FT.

☉ CURVE DATA

P.I. STA. 346+55.33
 Y = 686024.2219
 X = 3358166.7212
 Δ = 180°32.7' LT.
 D = 170°31.4"
 T = 81.84'
 L = 162.32'
 R = 515.00'

☉ CURVE DATA

P.I. STA. 139+27.37
 27.00' Y = 686002.6482
 X = 3358547.3113
 Δ = 28°54'38.1" RT.
 D = 70°19.7"
 T = 209.84'
 L = 410.73'
 R = 814.00'



PARCEL	OWNER	ACQUISITION	AREA
12-4-C-1	DELETED	DELETED	
12-2-C-1	HIGBEE LOUISIANA, LLC	ORIG. 798 BNDL. 12210 DEC. 23, 2009	17042.8 SQ. FT.
12-2			656.6 SQ. FT.
12-3-C-1			1305.0 SQ. FT.
12-3	MALL OF LOUISIANA, LLC	ORIG. 71 BNDL. 10679 APRIL 10, 1996	242.8 SQ. FT.
12-1-D1		ORIG. 86 BNDL. 10679 APRIL 10, 1996	9524.1 SQ. FT.
12-1			33806.3 SQ. FT.

ENERGY GULF STATES LOUISIANA, INC.

STATE OF LOUISIANA
 ROBERT H. BROOKS III
 REG. No. 4712
 REGISTERED PROFESSIONAL SURVEYOR

STATE OF LOUISIANA
 MAX O. USREY III
 REG. No. 4737
 REGISTERED PROFESSIONAL SURVEYOR

10/19/16

SHEET NUMBER: 12

PROJECT: 12-CS-HC-0043

COMPUTED BY: R. BROOKS
 CHECKED BY: M. USREY

DETAILED BY: M. ROBERTS
 CHECKED BY: M. USREY

DATE: 10/19/16
 SCALE: 1" = 30'

RIGHT OF WAY MAP
 C.P. PROJECT NO. 12-CS-HC-0043
 MALL OF LOUISIANA BOULEVARD (PHASE II)
 EAST BATON ROUGE PARISH
 MALL OF LOUISIANA BOULEVARD

EVANS-GRAVES ENGINEERS

MOU: DELETED PARCEL 12-4-C-1
 MOU: CHANGED NAME OF PROJECT
 MOU: REVISED AREAS FROM ACRES TO SQUARE FEET
 MOU: REVISED PARCEL 12-1 ACQUISITION AREA

FILE NO. R/W SHEET NO. 12

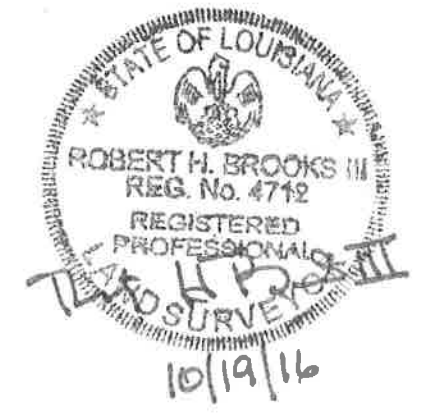
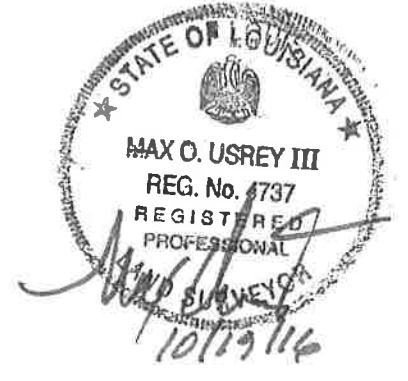
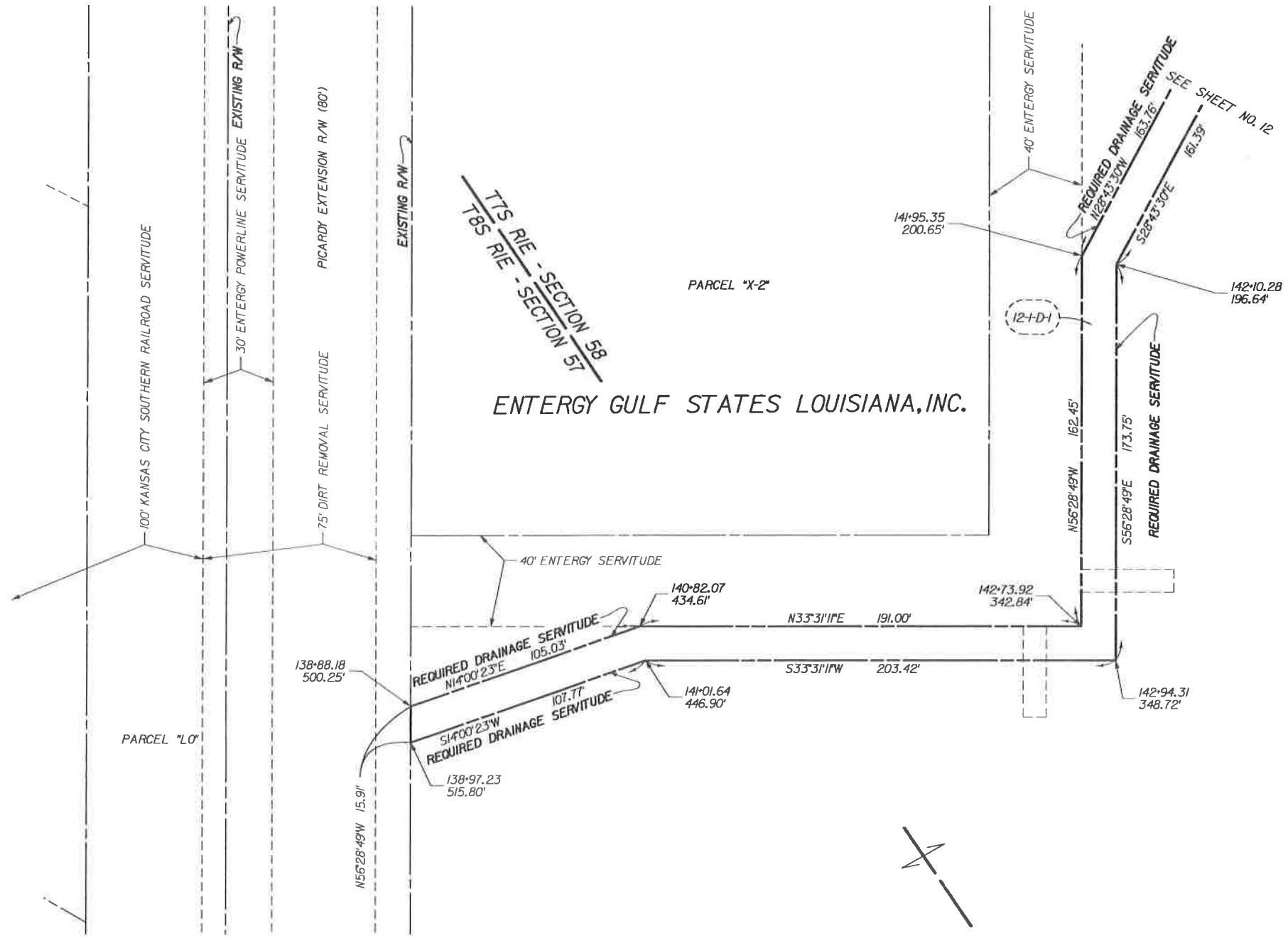
**GREENSBURG LAND DISTRICT
T7S-RIE & T8S-RIE
SECTION 58 SECTION 57**

NOTES:
 1. ALL PIPES AND MONUMENTS SHOWN HEREON WERE FOUND.
 2. THE COORDINATES AND BEARINGS SHOWN HEREON ARE BASED ON LOUISIANA STATE PLANE COORDINATE SYSTEM, SOUTH ZONE (NAD 83 (2011) EPOCH 2010.0000) TO CONVERT FROM GRID BEARINGS TO TRUE BEARINGS USE: $0^{\circ}07'25.8''$ \pm
 BASE STATIONS:
 HAMM,AJ7833, SJB,DF8160, ILSU,DF5754
 HAMMOND CORS ARP, SJB GROUP COOP CORS ARP, LOUISIANA STATE U CORS ARP
 LAT=N30°30'47.05150", LAT=N30°23'45.83106", LAT=N30°24'26.70946"
 LONG=W090°28'03.42841", LONG=W091°06'25.85461", LONG=W091°10'48.91474"
 Y=733115.66, Y=689601.48, Y=6933693.12
 X=3553447.23, X=3352133.18, X=3329089.84
 3. DISTANCES SHOWN ARE HORIZONTAL GROUND DISTANCES. TO CONVERT DISTANCES DERIVED FROM COORDINATES SHOWN HEREON TO HORIZONTAL GROUND DISTANCES, USE SCALE FACTOR: 0.99994823

RECORDATION SET
 F:\00_PROJECTS\12-500\Sheet_sets\RIGHT OF WAY\RECORDATION Set Phase 2\12500 Sheet13_RW_ph2.dgn

10:44

2/26/2020



LEGEND

EXISTING R/W	REQUIRED R/W	RIGHT OF WAY LINE
EXISTING C. of A.	REQUIRED C. of A.	CONTROL OF ACCESS
EXIST R/W & EXIST. C. of A.	REQ'D R/W & REQ'D C. of A.	RIGHT OF WAY & CONTROL OF ACCESS
LIMITS OF CONSTRUCTION		LIMITS OF CONSTRUCTION
LOT LINE		LOT LINE
APPARENT PROPERTY LINE		APPARENT PROPERTY LINE
EXISTING SERVITUDE LINE		EXISTING SERVITUDE LINE
SECTION LINE		SECTION LINE

PARCEL	OWNER	ACQUISITION	AREA

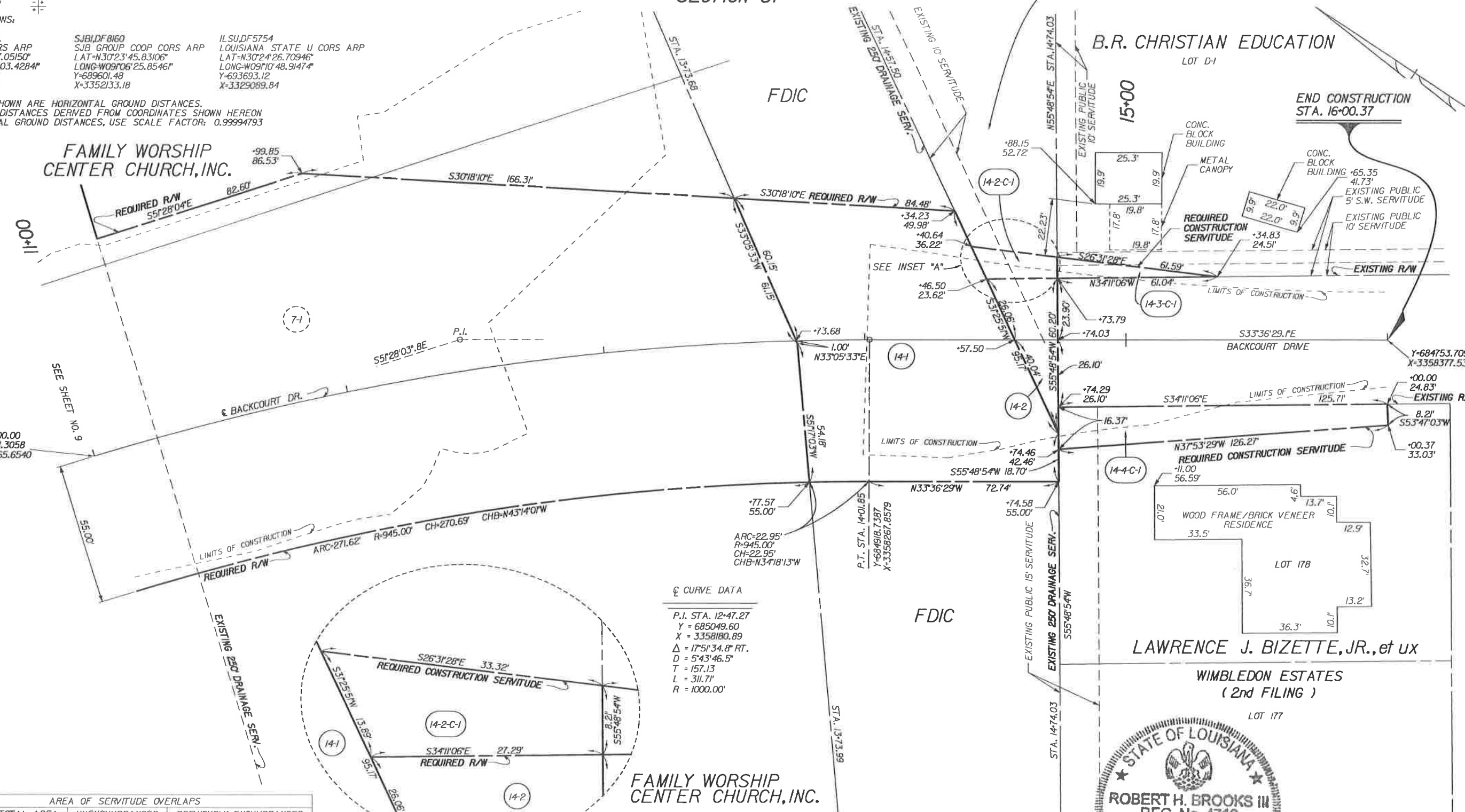
SHEET NUMBER	
COMPUTED BY	R. BROOKS
CHECKED BY	M. USREY
DATE	10/19/16
SCALE	1" = 30'
PARISH	EAST BATON ROUGE
CITY	BATON ROUGE
PROJECT	12-CS-HC-0043
RIGHT OF WAY MAP	
C.P. PROJECT NO.	12-CS-HC-0043
MALL OF LOUISIANA BOULEVARD (PHASE II)	
EAST BATON ROUGE PARISH	
MALL OF LOUISIANA BOULEVARD	
EVANS-GRAVES ENGINEERS	
CHANGED NAME OF PROJECT	
REVISION DESCRIPTION	
DATE	10/10/19

10:44
2/26/2020
RECORDER SET
F:\00_PROJECTS\12-500\Sheet_Sets\RIGHT OF WAY\RECORDATION Set Phase 2\12500 Sheet14_RW_ph2.dgn

**GREENSBURG LAND DISTRICT
T8S - R1E
SECTION 57**

CITY OF BATON ROUGE
PARISH OF EAST BATON ROUGE

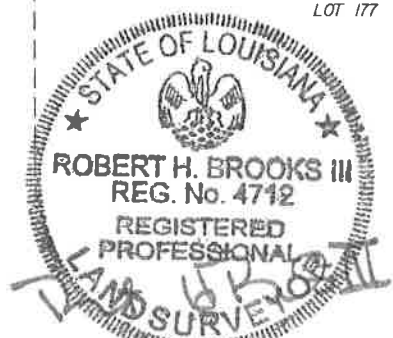
- NOTES:**
 1. ALL PIPES AND MONUMENTS SHOWN HEREON WERE FOUND.
 2. THE COORDINATES AND BEARINGS SHOWN HEREON ARE BASED ON LOUISIANA STATE PLANE COORDINATE SYSTEM, SOUTH ZONE (NAD 83 (2011) EPOCH 2010.0000) TO CONVERT FROM GRID BEARINGS TO TRUE BEARINGS USE: 0°07'21.6"
 BASE STATIONS:
 HAMM, A17833, HAMMOND CORS ARP
 LAT=N30°30'47.05150"
 LONG=W091°28'03.4284"
 Y=733115.66
 X=3353447.23
 SJB, DF8160, SJB GROUP COOP CORS ARP
 LAT=N30°23'45.83106"
 LONG=W091°05'25.8546"
 Y=689601.48
 X=3352133.18
 ILSU, DF5754, LOUISIANA STATE U CORS ARP
 LAT=N30°24'26.70946"
 LONG=W091°10'48.91474"
 Y=693693.12
 X=3329089.84
 3. DISTANCES SHOWN ARE HORIZONTAL GROUND DISTANCES. TO CONVERT DISTANCES DERIVED FROM COORDINATES SHOWN HEREON TO HORIZONTAL GROUND DISTANCES, USE SCALE FACTOR: 0.99994793



¢ CURVE DATA
 P.I. STA. 12+47.27
 Y = 685049.60
 X = 3358180.89
 Δ = 17°51'34.8" RT.
 D = 5°43'46.5"
 T = 157.13
 L = 311.71'
 R = 1000.00'

AREA OF SERVITUDE OVERLAPS			
PARCEL	TOTAL AREA	UNENCUMBRANCED	PREVIOUSLY ENCUMBRANCED
14-4-C1	1546.6 SQ. FT.	1308.5 SQ. FT.	238.1 SQ. FT.
14-3-C1	250.6 SQ. FT.	0.0 SQ. FT.	250.6 SQ. FT.
14-2-C1	308.2 SQ. FT.	177.9 SQ. FT.	130.3 SQ. FT.
14-2	821.4 SQ. FT.	293.4 SQ. FT.	528.0 SQ. FT.
14-1	9440.4 SQ. FT.	0.0 SQ. FT.	9440.4 SQ. FT.

FAMILY WORSHIP CENTER CHURCH, INC.



LEGEND

- EXISTING R/W —
- REQUIRED R/W —
- EXISTING C. of A. —
- REQUIRED C. of A. —
- EXIST R/W & EXIST C. of A. —
- REQ'D R/W & REQ'D C. of A. —
- RIGHT OF WAY LINE
- CONTROL OF ACCESS
- RIGHT OF WAY & CONTROL OF ACCESS
- LIMITS OF CONSTRUCTION
- LOT LINE
- APPARENT PROPERTY LINE
- EXISTING SERVITUDE LINE
- SECTION LINE

PARCEL	OWNER	ACQUISITION	AREA
14-4-C1	LAWRENCE J. BIZETTE, JR., et ux	ORIG. 489 BNDL. 10574 FEB. 13, 1985	1546.6 SQ. FT.
14-3-C1	B.R. CHRISTIAN EDUCATION FOUNDATION	ORIG. 255 BNDL. 12061 JUNE 3, 2008	250.6 SQ. FT.
14-2-C1	CITY OF BATON ROUGE PARISH OF EAST BATON ROUGE	ORIG. 374 BNDL. 9408 DEC. 4, 1980	308.2 SQ. FT.
14-2	FDIC	ORIG. 98 BNDL. 10725 AUG. 2, 1996	821.4 SQ. FT.
14-1	FDIC	ORIG. 98 BNDL. 10725 AUG. 2, 1996	9440.4 SQ. FT.

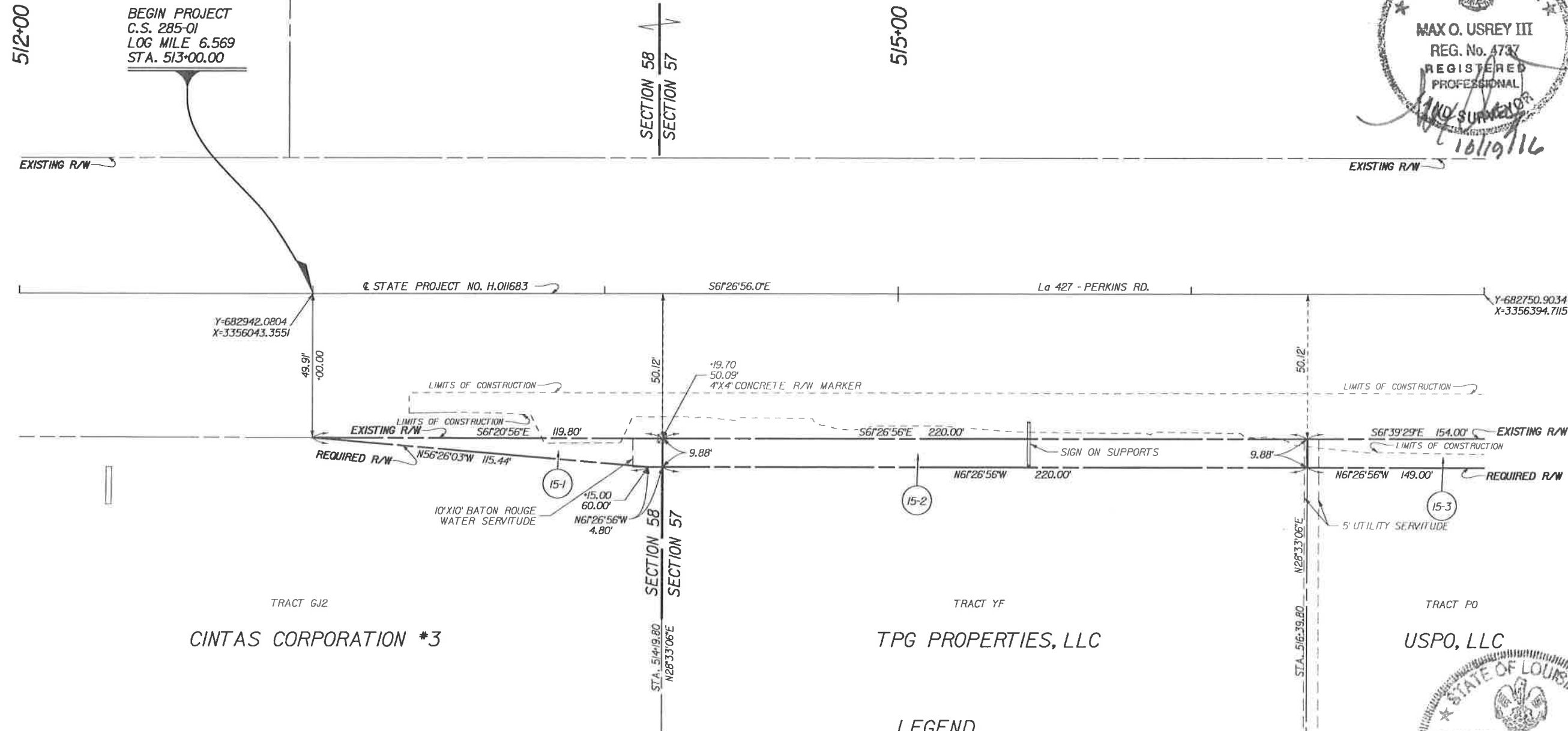
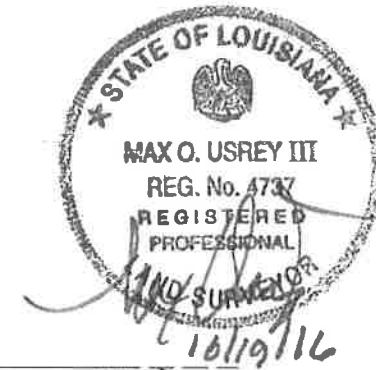
SHEET NUMBER	EAST BATON ROUGE	PARISH	BATON ROUGE	CITY	PROJECT	12-CS-HC-0043
COMPUTED BY	R. BROOKS	PREPARED BY	M. USREY	CHECKED BY	M. USREY	DATE
DATE	10/19/16	SCALE	1" = 20'	RIGHT OF WAY MAP		
C.P. PROJECT NO. 12-CS-HC-0043						
MALL OF LOUISIANA BOULEVARD (PHASE II)						
EAST BATON ROUGE PARISH						
MALL OF LOUISIANA BOULEVARD						
EVANS-GRAVES ENGINEERS						
MOU	MOU	MOU	MOU	MOU	MOU	MOU
02/24/20	REVISED OWNERSHIP OF PARCEL 14-1	10/10/19	CHANGED NAME OF PROJECT	07/19/17	REVISED AREAS FROM ACRES TO SQUARE FEET	REVISION DESCRIPTION

10:44
2/26/2020
RECORDATION SET
F:\00_PROJECTS\12-500\Sheet_sets\RIGHT OF WAY\RECORDATION Set Phase 2\12500 Sheet15_RW_ph2.dgn

NOTES:
 1. ALL PIPES AND MONUMENTS SHOWN HEREON WERE FOUND.
 2. THE COORDINATES AND BEARINGS SHOWN HEREON ARE BASED ON LOUISIANA STATE PLANE COORDINATE SYSTEM, SOUTH ZONE (NAD 83 (2011) EPOCH 2010.00000) TO CONVERT FROM GRID BEARINGS TO TRUE BEARINGS USE: 0°07'10.1"
 BASE STATIONS:
 HAMM, A17833, HAMMOND CORS ARP
 SJB, DFB160, SJB GROUP COOP CORS ARP
 ILSU, DF5754, LOUISIANA STATE U CORS ARP
 LAT=N30°30'47.05150" LONG=W097°28'03.42844" Y=733115.66 X=3553447.23
 LAT=N30°23'45.83106" LONG=W097°06'25.85461" Y=689601.48 X=3352133.18
 LAT=N30°24'26.70946" LONG=W097°10'48.91474" Y=693693.12 X=3329089.84
 3. DISTANCES SHOWN ARE HORIZONTAL GROUND DISTANCES. TO CONVERT DISTANCES DERIVED FROM COORDINATES SHOWN HEREON TO HORIZONTAL GROUND DISTANCES, USE SCALE FACTOR: 0.99994727

GREENSBURG LAND DISTRICT
 T8S - R1E
 SECTIONS 57 & 58

AREA OF SERVITUDE OVERLAPS			
PARCEL	TOTAL AREA	UNENCUMBRANCED	PREVIOUSLY ENCUMBRANCED
15-3	1577.6 SQ. FT.	1538.0 SQ. FT.	39.6 SQ. FT.
15-2	2174.0 SQ. FT.	2164.13 SQ. FT.	9.9 SQ. FT.
15-1	616.2 SQ. FT.	518.5 SQ. FT.	97.72 SQ. FT.



PARCEL	OWNER	ACQUISITION	AREA
15-3	USPO, LLC	ORIG. 951 BNDL. 10963 DEC. 21, 1998	1577.6 SQ. FT.
15-2	TPG PROPERTIES, LLC	ORIG. 628 BNDL. 12436 AUG. 22, 2012	2174.0 SQ. FT.
15-1	CINTAS CORPORATION *3	ORIG. 358 BNDL. 11309 JAN. 22, 2002	616.2 SQ. FT.

LEGEND

	EXISTING R/W	RIGHT OF WAY LINE
	REQUIRED R/W	RIGHT OF WAY LINE
	EXISTING C. of A.	CONTROL OF ACCESS
	REQUIRED C. of A.	CONTROL OF ACCESS
	EXIST R/W & EXIST. C. of A.	RIGHT OF WAY & CONTROL OF ACCESS
	REQ'D R/W & REQ'D C. of A.	RIGHT OF WAY & CONTROL OF ACCESS
		LIMITS OF CONSTRUCTION
		LOT LINE
		APPARENT PROPERTY LINE
		EXISTING SERVITUDE LINE
		SECTION LINE



COMPUTED R. BROOKS	CHECKED M. USREY	DETAILED M. ROBERTS	CHECKED M. USREY	DATE 10/19/16	SCALE 1" = 20'
RIGHT OF WAY MAP C.P. PROJECT NO. 12-CS-HC-0043 MALL OF LOUISIANA BOULEVARD (PHASE II) EAST BATON ROUGE PARISH MALL OF LOUISIANA BOULEVARD					
EVANS- GRAVES ENGINEERS					
10/10/19	CHANGED NAME OF PROJECT	07/19/17	REVISED AREAS FROM ACRES TO SQUARE FEET	DATE	BY
ROBERT H. BROOKS III REG. No. 4712 REGISTERED PROFESSIONAL AND SURVEYOR 10/19/16					
				FILE NO.	R/W SHEET NO. 15

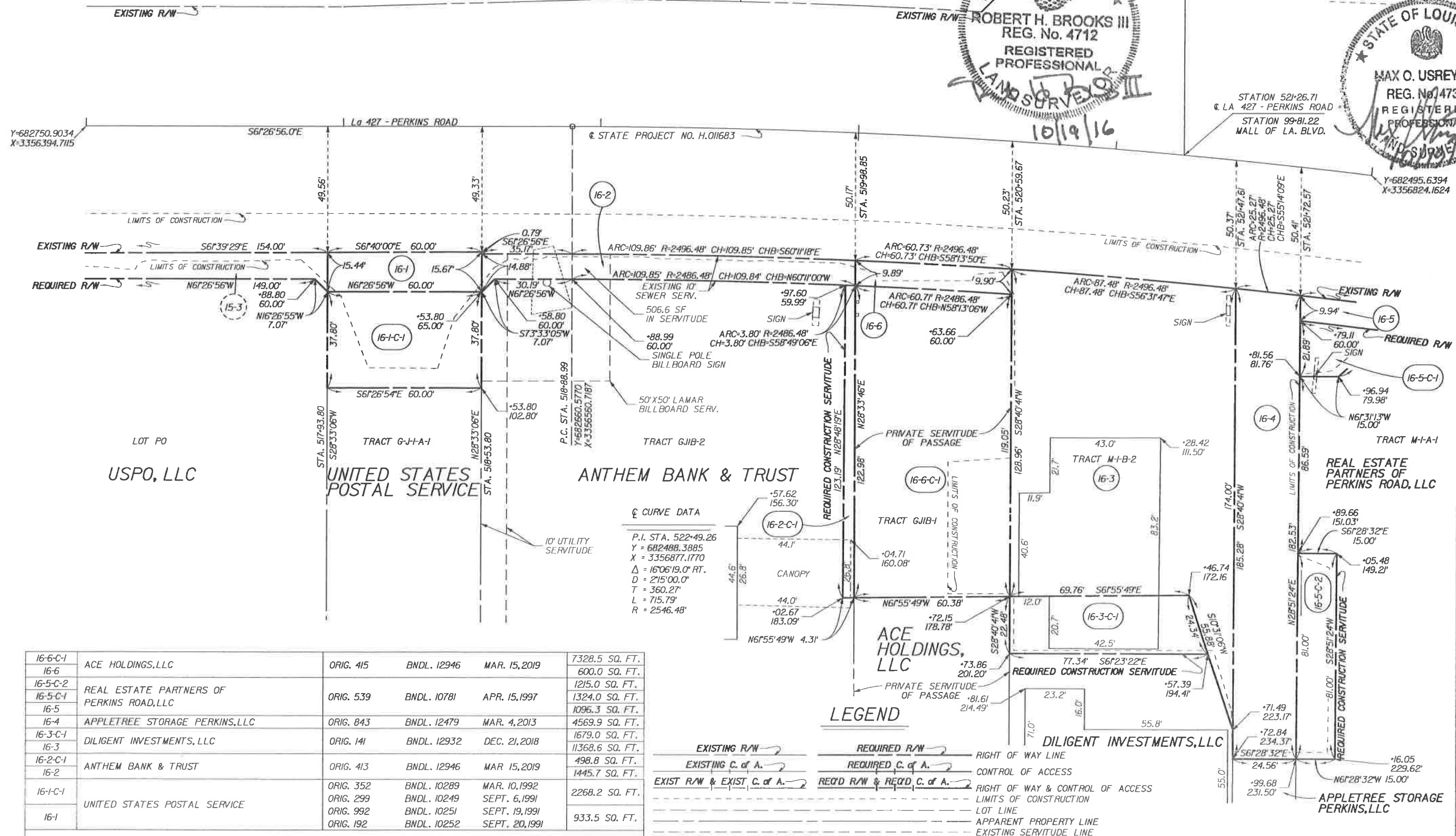
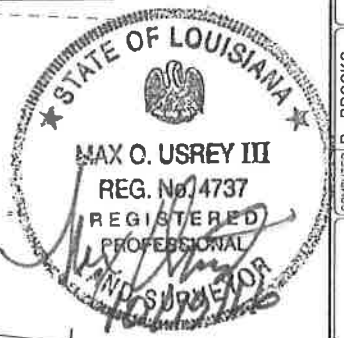
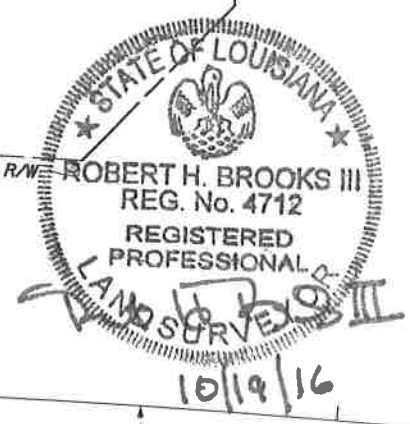
NOTES:
 1. ALL PIPES AND MONUMENTS SHOWN HEREON WERE FOUND.
 2. THE COORDINATES AND BEARINGS SHOWN HEREON ARE BASED ON LOUISIANA STATE PLANE COORDINATE SYSTEM, SOUTH ZONE (NAD 83 (2011) EPOCH 2010.0000) TO CONVERT FROM GRID BEARINGS TO TRUE BEARINGS USE: 0°07'12.4"

BASE STATIONS:
 HAMM.AJ7833, HAMMOND CORS ARP
 SJBIDFB160, SJB GROUP COOP CORS ARP
 ILSUDF5754, LOUISIANA STATE U CORS ARP

PARCEL	TOTAL AREA	UNENCUMBRANCED	PREVIOUSLY ENCUMBRANCED
16-2	1445.7 SQ. FT.	0.0 SQ. FT.	1645.7 SQ. FT.
16-6	600.0 SQ. FT.	0.0 SQ. FT.	600.0 SQ. FT.

GREENSBURG LAND DISTRICT
 T8S - R1E
 SECTION 57

520+00



☺ CURVE DATA

P.I. STA. 522+49.26
Y = 682488.3885
X = 3356877.1770
Δ = 16°06'19.0" RT.
D = 2'15'00.0"
T = 360.27'
L = 715.79'
R = 2546.48'

LEGEND

- EXISTING R/W → RIGHT OF WAY LINE
- EXISTING C. of A. → CONTROL OF ACCESS
- EXIST R/W & EXIST C. of A. → RIGHT OF WAY & CONTROL OF ACCESS
- REQ'D R/W → LIMITS OF CONSTRUCTION
- REQ'D C. of A. → LOT LINE
- REQ'D R/W & REQ'D C. of A. → APPARENT PROPERTY LINE
- EXISTING SERVITUDE LINE
- SECTION LINE

PARCEL	OWNER	ACQUISITION	AREA
16-6-C-1	ACE HOLDINGS, LLC	ORIG. 415 BNDL. 12946 MAR. 15, 2019	7328.5 SQ. FT.
16-6			600.0 SQ. FT.
16-5-C-2	REAL ESTATE PARTNERS OF PERKINS ROAD, LLC	ORIG. 539 BNDL. 10781 APR. 15, 1997	1215.0 SQ. FT.
16-5-C-1			1324.0 SQ. FT.
16-5			1096.3 SQ. FT.
16-4	APPLETREE STORAGE PERKINS, LLC	ORIG. 843 BNDL. 12479 MAR. 4, 2013	4569.9 SQ. FT.
16-3-C-1			1679.0 SQ. FT.
16-3	DILIGENT INVESTMENTS, LLC	ORIG. 141 BNDL. 12932 DEC. 21, 2018	11368.6 SQ. FT.
16-2-C-1			498.8 SQ. FT.
16-2	ANTHEM BANK & TRUST	ORIG. 413 BNDL. 12946 MAR. 15, 2019	1445.7 SQ. FT.
16-1-C-1			2268.2 SQ. FT.
16-1	UNITED STATES POSTAL SERVICE	ORIG. 352 BNDL. 10289 MAR. 10, 1992	
		ORIG. 299 BNDL. 10249 SEPT. 6, 1991	
		ORIG. 992 BNDL. 10251 SEPT. 19, 1991	
		ORIG. 192 BNDL. 10252 SEPT. 20, 1991	933.5 SQ. FT.

DATE	REVISION DESCRIPTION	BY
02/24/20	ADDED PARCELS 16-6 & 16-6-C-1	MOU
02/24/20	REVISED OWNERSHIP OF PARCELS 16-3 & 16-3-C-1	MOU
02/24/20	REVISED OWNERSHIP OF PARCELS 16-2 & 16-2-C-1	MOU
02/24/20	REVISED PARCELS 16-2 & 16-2-C-1	MOU
10/10/19	ADDED PARCELS 16-2-C-1, 16-3-C-1, & 16-5-C-2	MOU
10/10/19	REVISED PARCELS 16-3, 16-4, 16-5, AND 16-5-C-1	MOU
10/10/19	CHANGED NAME OF PROJECT	MOU
5/1/18	CHANGE NAME OF PROJECT	MOU
07/19/17	REVISED AREAS FROM ACRES TO SQUARE FEET	MOU
		BY

SHEET NUMBER	PARISH	CITY	PROJECT
	EAST BATON ROUGE	BATON ROUGE	12-CS-HC-0043

RIGHT OF WAY MAP
 C.P. PROJECT NO. 12-CS-HC-0043
 MALL OF LOUISIANA BOULEVARD
 (PHASE II)
 EAST BATON ROUGE PARISH
 MALL OF LOUISIANA BOULEVARD



EVANS-GRAVES ENGINEERS

GREENSBURG LAND DISTRICT T8S - R1E SECTION 57

525+00

NOTES:
 1. ALL PIPES AND MONUMENTS SHOWN HEREON WERE FOUND.
 2. THE COORDINATES AND BEARINGS SHOWN HEREON ARE BASED ON LOUISIANA STATE PLANE COORDINATE SYSTEM, SOUTH ZONE (NAD 83 (2011) EPOCH 2010.0000) TO CONVERT FROM GRID BEARINGS TO TRUE BEARINGS USE: $\sigma 07'14.7''$

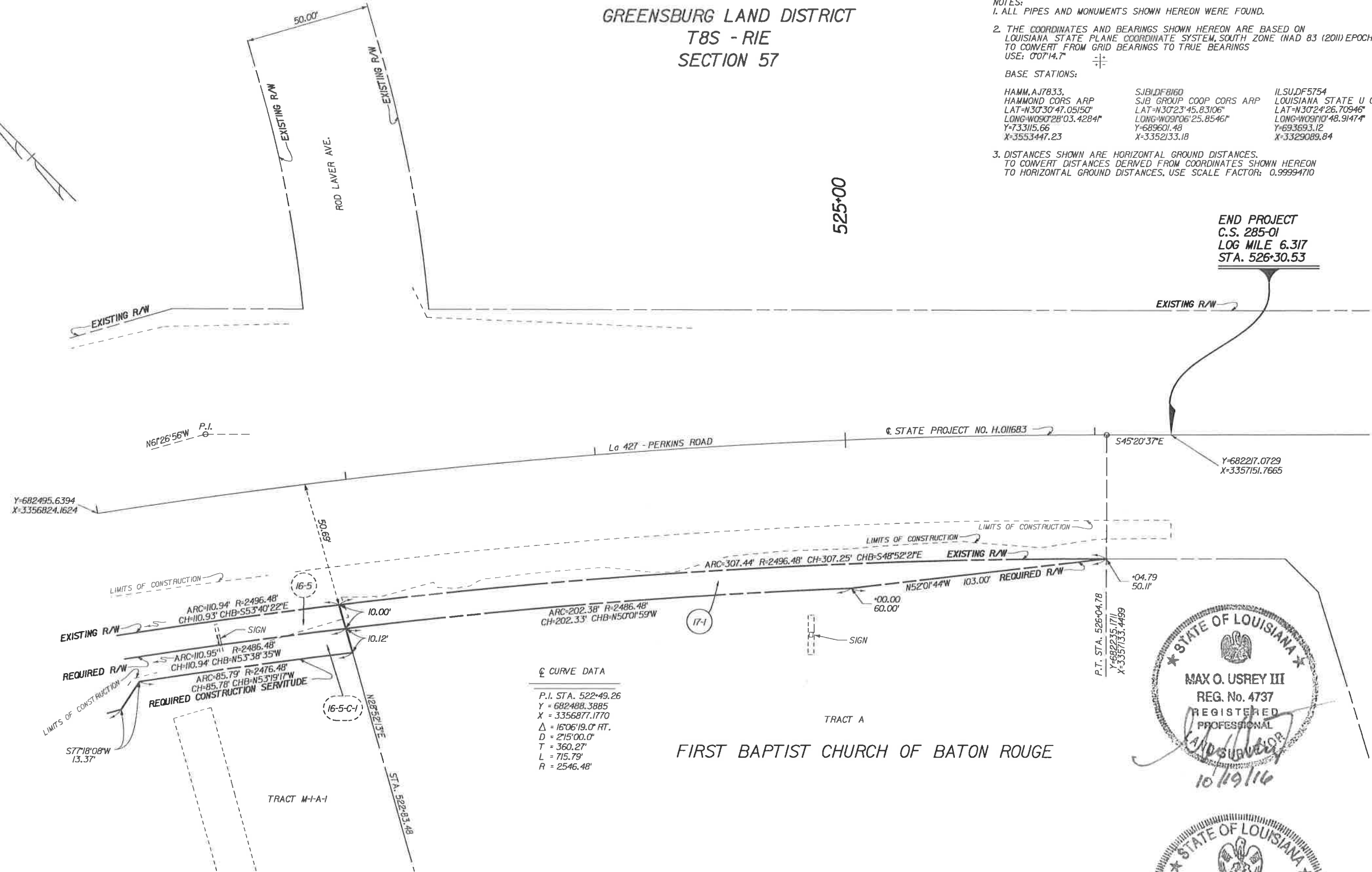
BASE STATIONS:
 HAMM.AJ7833, HAMMOND CORS ARP
 LAT=N30°30'47.05150"
 LONG=W090°28'03.42844"
 Y=733115.66
 X=33553447.23

SJB.DF8160, SJB GROUP COOP CORS ARP
 LAT=N30°23'45.83106"
 LONG=W090°06'25.85461"
 Y=689601.48
 X=3352133.18

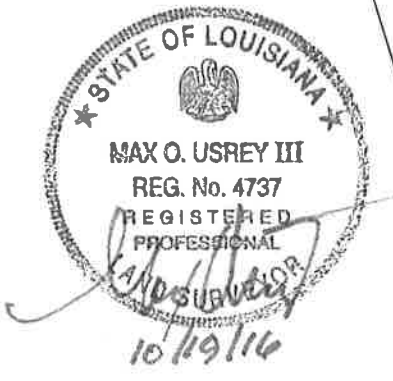
ILSU.DF5754, LOUISIANA STATE U CORS ARP
 LAT=N30°24'26.70946"
 LONG=W090°10'48.91474"
 Y=693693.12
 X=3329089.84

3. DISTANCES SHOWN ARE HORIZONTAL GROUND DISTANCES. TO CONVERT DISTANCES DERIVED FROM COORDINATES SHOWN HEREON TO HORIZONTAL GROUND DISTANCES, USE SCALE FACTOR: 0.99994710

END PROJECT
 C.S. 285-01
 LOG MILE 6.317
 STA. 526+30.53



Curve Data
 P.I. STA. 522+49.26
 Y = 682488.3885
 X = 3356877.1770
 $\Delta = 16°06'19.0''$ RT.
 D = 215°00.0"
 T = 360.27'
 L = 715.79'
 R = 2546.48'



LEGEND

	EXISTING R/W		REQUIRED R/W		RIGHT OF WAY LINE
	EXISTING C. of A.		REQUIRED C. of A.		CONTROL OF ACCESS
	EXIST R/W & EXIST C. of A.		REQ'D R/W & REQ'D C. of A.		RIGHT OF WAY & CONTROL OF ACCESS
	LIMITS OF CONSTRUCTION		LOT LINE		APPARENT PROPERTY LINE
	EXISTING SERVITUDE LINE		SECTION LINE		

17-1	FIRST BAPTIST CHURCH OF BATON ROUGE	ORIG. 978	BNDL. 11051	SEPT. 15, 1999	2555.3 SQ. FT.
PARCEL	OWNER	ACQUISITION		AREA	

SHEET NUMBER	EAST BATON ROUGE
COMPUTED BY: R. BROOKS	BATON ROUGE
CHECKED BY: M. USREY	12-CS-HC-0043
DATE: 10/19/16	SCALE: 1" = 20'
RIGHT OF WAY MAP	
C.P. PROJECT NO. 12-CS-HC-0043	
MALL OF LOUISIANA BOULEVARD	
(PHASE II)	
EAST BATON ROUGE PARISH	
MALL OF LOUISIANA BOULEVARD	
MOU	MOU
MOU	MOU
BY	BY
DATE	DATE
10/10/19	REVISED PARCEL 16-5-C-1.
10/10/19	CHANGED NAME OF PROJECT
07/19/17	REVISED AREAS FROM ACRES TO SQUARE FEET
REVISION	DESCRIPTION
10/19/16	LAND SURVEYOR II
10/19/16	LAND SURVEYOR II

GREENSBURG LAND DISTRICT

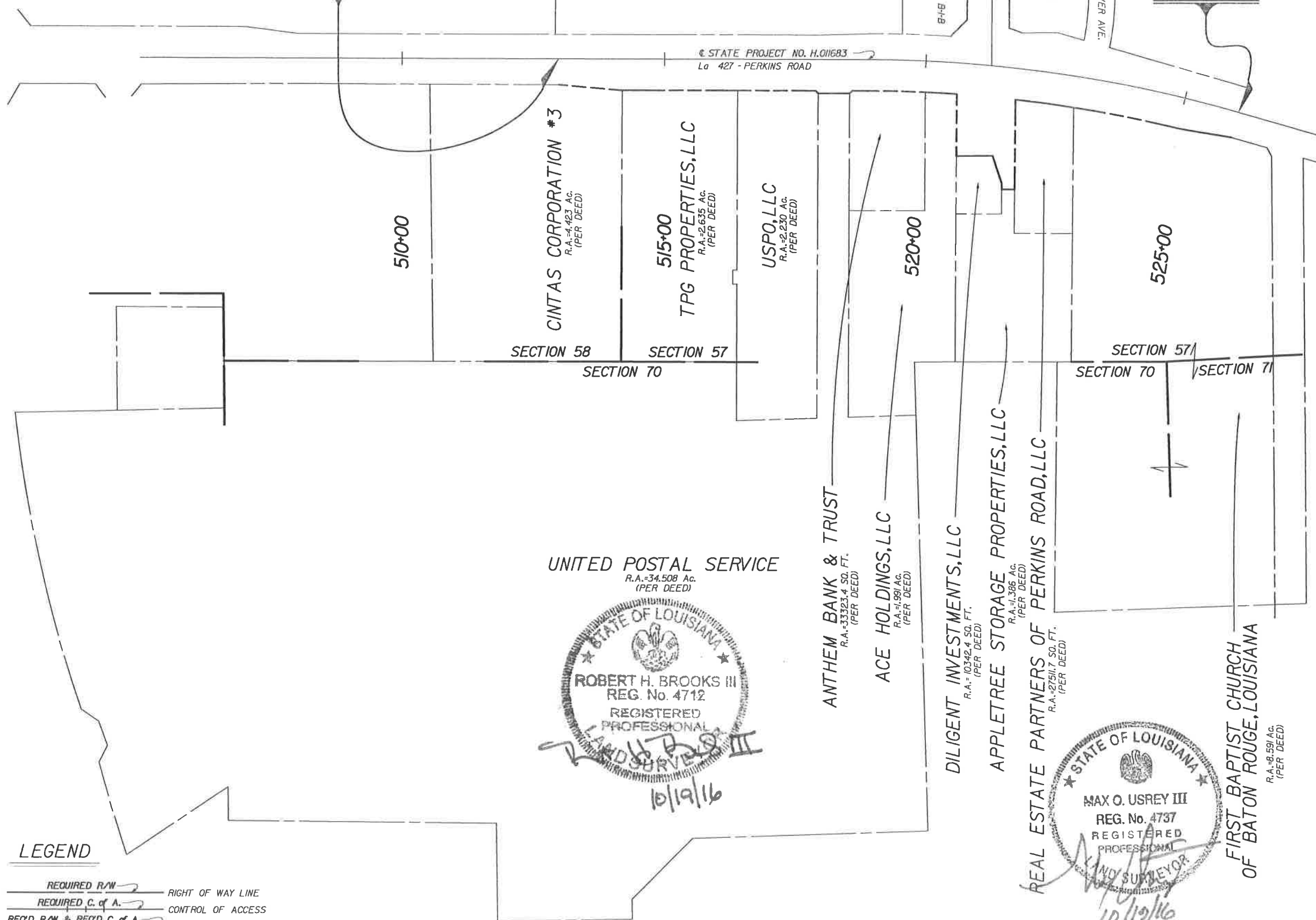
T8S - R1E

SECTIONS 57, 58 & 70

BEGIN PROJECT
C.S. 285-01
LOG MILE 6.569
STA. 513+00.00

END PROJECT
C.S. 285-01
LOG MILE 6.317
STA. 526+30.53

STATE PROJECT NO. H.011683
La 427 - PERKINS ROAD



LEGEND

- EXISTING R/W → RIGHT OF WAY LINE
- REQUIRED R/W → RIGHT OF WAY LINE
- EXISTING C. of A. → CONTROL OF ACCESS
- REQUIRED C. of A. → CONTROL OF ACCESS
- EXIST R/W & EXIST C. of A. → RIGHT OF WAY & CONTROL OF ACCESS
- REQ'D R/W & REQ'D C. of A. → RIGHT OF WAY & CONTROL OF ACCESS
- LIMITS OF CONSTRUCTION
- LOT LINE
- APPARENT PROPERTY LINE
- EXISTING SERVITUDE LINE
- SECTION LINE

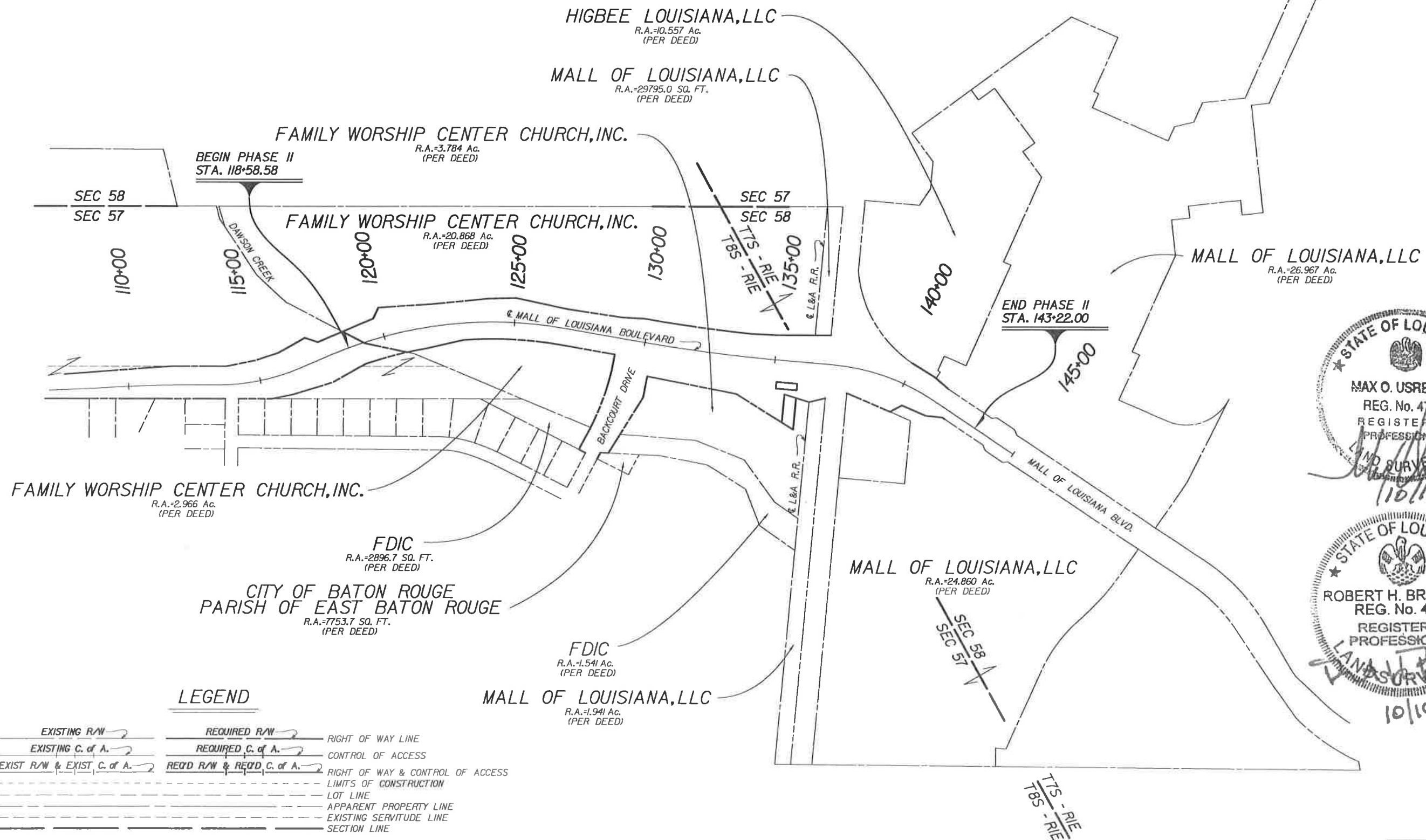
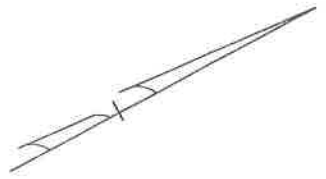
UNITED POSTAL SERVICE
R.A.-34,508 AC.
(PER DEED)

STATE OF LOUISIANA
ROBERT H. BROOKS III
REG. No. 4712
REGISTERED PROFESSIONAL
10/19/16

STATE OF LOUISIANA
MAX O. USREY III
REG. No. 4737
REGISTERED PROFESSIONAL
10/19/16

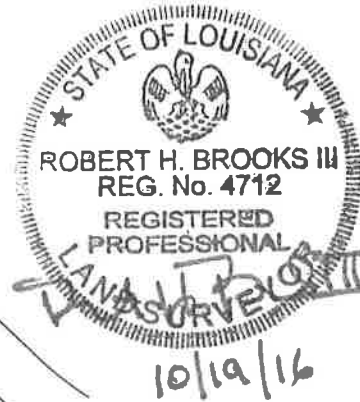
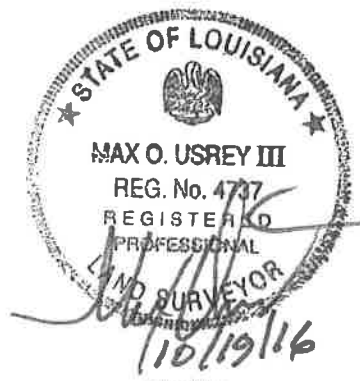
02/24/20	REVISED TO CONFORM WITH SHEET 16	MOU	BY
10/10/19	CHANGE NAME OF PROJECT	MOU	
07/19/17	REVISED REMAINING AREAS FROM ACRES TO SQUARE FEET	MOU	
	REVISION DESCRIPTION		
COMPUTED	R. BROOKS	PARISH	EAST BATON ROUGE
CHECKED	M. USREY	CITY	BATON ROUGE
DETAILED	M. ROBERTS	PROJECT	12-CS-HC-0043
CHECKED	M. USREY		
DATE	10/19/16		
SCALE	1" = 100'		
RIGHT OF WAY MAP			
C.P. PROJECT NO. 12-CS-HC-0043			
MALL OF LOUISIANA BOULEVARD			
(PHASE II)			
EAST BATON ROUGE PARISH			
MALL OF LOUISIANA BOULEVARD			
EVANS-GRAVES ENGINEERS			
FILE NO.			
R/W SHEET NO. 18			

GREENSBURG LAND DISTRICT
T7S - R1E SECTION 58 T8S - R1E SECTION 57



LEGEND

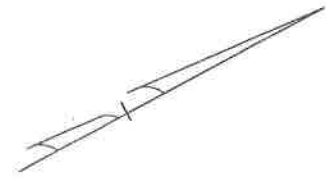
	EXISTING R/W		REQUIRED R/W		RIGHT OF WAY LINE
	EXISTING C. of A.		REQUIRED C. of A.		CONTROL OF ACCESS
	EXIST R/W & EXIST. C. of A.		REQ'D R/W & REQ'D C. of A.		RIGHT OF WAY & CONTROL OF ACCESS
					LIMITS OF CONSTRUCTION
					LOT LINE
					APPARENT PROPERTY LINE
					EXISTING SERVITUDE LINE
					SECTION LINE



COMPUTED	R. BROOKS	PARISH	EAST BATON ROUGE
CHECKED	M. USREY	CITY	BATON ROUGE
DATE	10/19/16	PROJECT	12-CS-HC-0043
SCALE	1" = 200'		
RIGHT OF WAY MAP			
C.P. PROJECT NO. 12-CS-HC-0043			
MALL OF LOUISIANA BOULEVARD			
(PHASE II)			
EAST BATON ROUGE PARISH			
MALL OF LOUISIANA BOULEVARD			
MOU	MOU	MOU	BY
02/24/20	REVISED TO CONFORM WITH SHEET 14		
10/10/19	CHANGE NAME OF PROJECT		
07/19/17	REVISED REMAINING AREAS FROM ACRES TO SQUARE FEET		
DATE	REVISION DESCRIPTION		

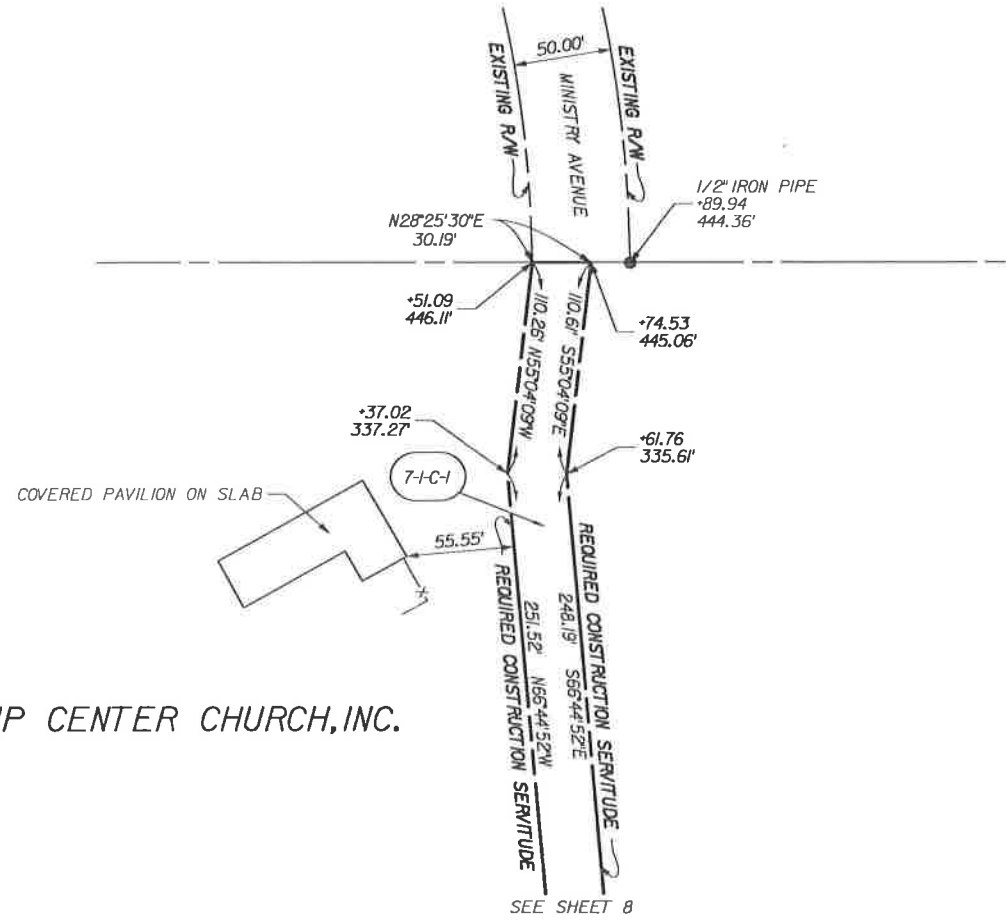
NOTES:
 1. ALL PIPES AND MONUMENTS SHOWN HEREON WERE FOUND.
 2. THE COORDINATES AND BEARINGS SHOWN HEREON ARE BASED ON LOUISIANA STATE PLANE COORDINATE SYSTEM, SOUTH ZONE (NAD 83 (2011) EPOCH 2010.0000) TO CONVERT FROM GRID BEARINGS TO TRUE BEARINGS USE: 0°07'17.6"
 BASE STATIONS:
 HAMM, AJ7833, SJBD, DF8160, ILSU, DF5754
 HAMMOND CORS ARP, SJB GROUP COOP CORS ARP, LOUISIANA STATE U CORS ARP
 LAT=N30°30'47.05150", LAT=N30°23'45.83106", LAT=N30°24'26.70946"
 LONG=W099°28'03.42841", LONG=W09°06'25.85461", LONG=W09°10'48.91474"
 Y=733115.659, Y=689601.479, Y=693693.123
 X=3553447.232, X=3352133.176, X=3329089.842
 3. DISTANCES SHOWN ARE HORIZONTAL GROUND DISTANCES. TO CONVERT DISTANCES DERIVED FROM COORDINATES SHOWN HEREON TO HORIZONTAL GROUND DISTANCES, USE SCALE FACTOR: 0.99994786

GREENSBURG LAND DISTRICT
 T8S - R1E
 SECTION 57



SECTION 58
 SECTION 57

SECTION 58
 SECTION 57

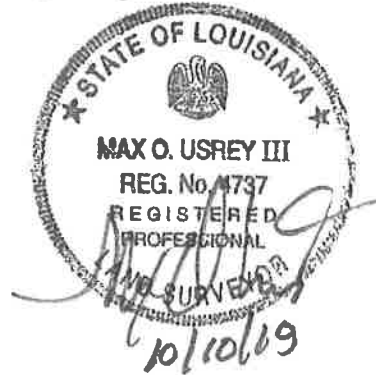


FAMILY WORSHIP CENTER CHURCH, INC.

SEE SHEET 8

LEGEND

- EXISTING R/W → RIGHT OF WAY LINE
- REQUIRED R/W → RIGHT OF WAY LINE
- EXISTING C. of A. → CONTROL OF ACCESS
- REQUIRED C. of A. → CONTROL OF ACCESS
- EXIST R/W & EXIST C. of A. → RIGHT OF WAY & CONTROL OF ACCESS
- REQ'D R/W & REQ'D C. of A. → RIGHT OF WAY & CONTROL OF ACCESS
- LIMITS OF CONSTRUCTION
- LOT LINE
- APPARENT PROPERTY LINE
- EXISTING SERVITUDE LINE
- SECTION LINE



PARCEL	OWNER	ACQUISITION	AREA

SHEET NUMBER	
COMPUTED	R. BROOKS
CHECKED	M. USREY
DETAILED	J. LEJUNE
CHECKED	M. USREY
DATE	10/10/19
SCALE	1" = 50'
PARTISH	EAST BATON ROUGE
CITY	BATON ROUGE
PROJECT	12-CS-HC-0043
RIGHT OF WAY MAP	
C.P. PROJECT NO. 12-CS-HC-0043	
MALL OF LOUISIANA BOULEVARD	
(PHASE II)	
EAST BATON ROUGE PARISH	
MALL OF LOUISIANA BOULEVARD	
EVANS-GRAVES ENGINEERS	MOU BY
10/10/19	DATE
CHANGE NAME OF PROJECT	REVISION DESCRIPTION