



STATE OF LOUISIANA
 DEPARTMENT OF TRANSPORTATION AND DEVELOPMENT
 RIGHT OF WAY PROPERTY MAP OF PROPOSED
 STATE HIGHWAY

CITY PROJECT NO. 20-CP-HC-0008

MIDWAY DRIVE (PICARDY AVE. TO CONSTANTIN BLVD.)

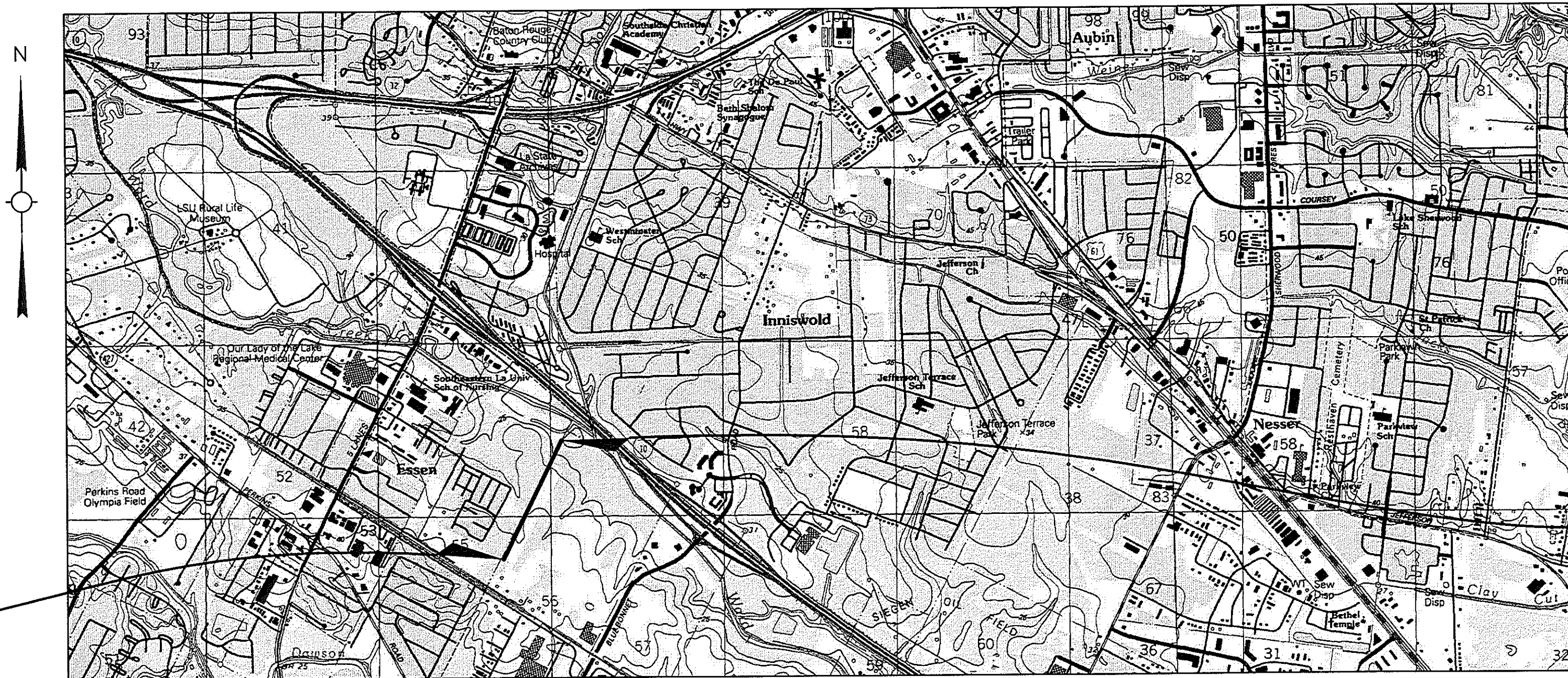
EAST BATON ROUGE PARISH

C.P. 20-CP-HC-0008



VICINITY MAP

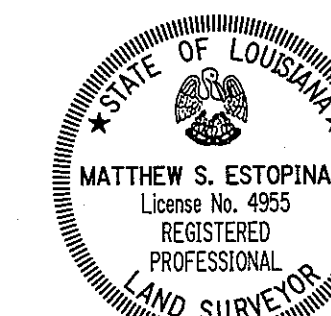
BEGIN PROJECT
 MIDWAY DR.
 BEG. 20-CP-HC-0008
 STA. 601+50.00



END PROJECT
 MIDWAY DR
 END 20-CP-HC-0008
 STA. 627+70.00

LAYOUT MAP

SCALE: 1 INCH = 1 MILE



9/21/21

I HEREBY CERTIFY THAT I MADE A SURVEY ON THE GROUND OF THE
 PROPERTY SHOWN AND THAT THIS MAP CONFORMS TO THE STANDARDS
 OF PRACTICE FOR ROUTE SURVEYS AS ESTABLISHED BY THE LOUISIANA
 STATE BOARD OF REGISTRATION FOR PROFESSIONAL ENGINEERS AND
 LAND SURVEYORS.
 GWS ENGINEERING, INC. (225) 769-1788
 8170 HIGHLAND ROAD, BATON ROUGE, LA 70808

SHEET NUMBER		EAST BATON ROUGE	
CONTROL SECTION	DATE	STATE PROJECT	20-CP-HC-008
COMPUTED K&M	09/21/2021	1" = 1 MILE	
CHECKED M&E			
DETAILED TTF			
CHECKED M&E			
DATE			
SCALE			
RIGHT OF WAY MAP PROJECT NO. 20-CP-HC-008 MIDWAY DR. (PICARDY AVE. TO CONSTANTIN BLVD) EAST BATON ROUGE PARISH			
GWS			
REVISION DESCRIPTION	DATE	BY	

GREENSBURG LAND DISTRICT T7S - R1E SECTION 56

NOTES:

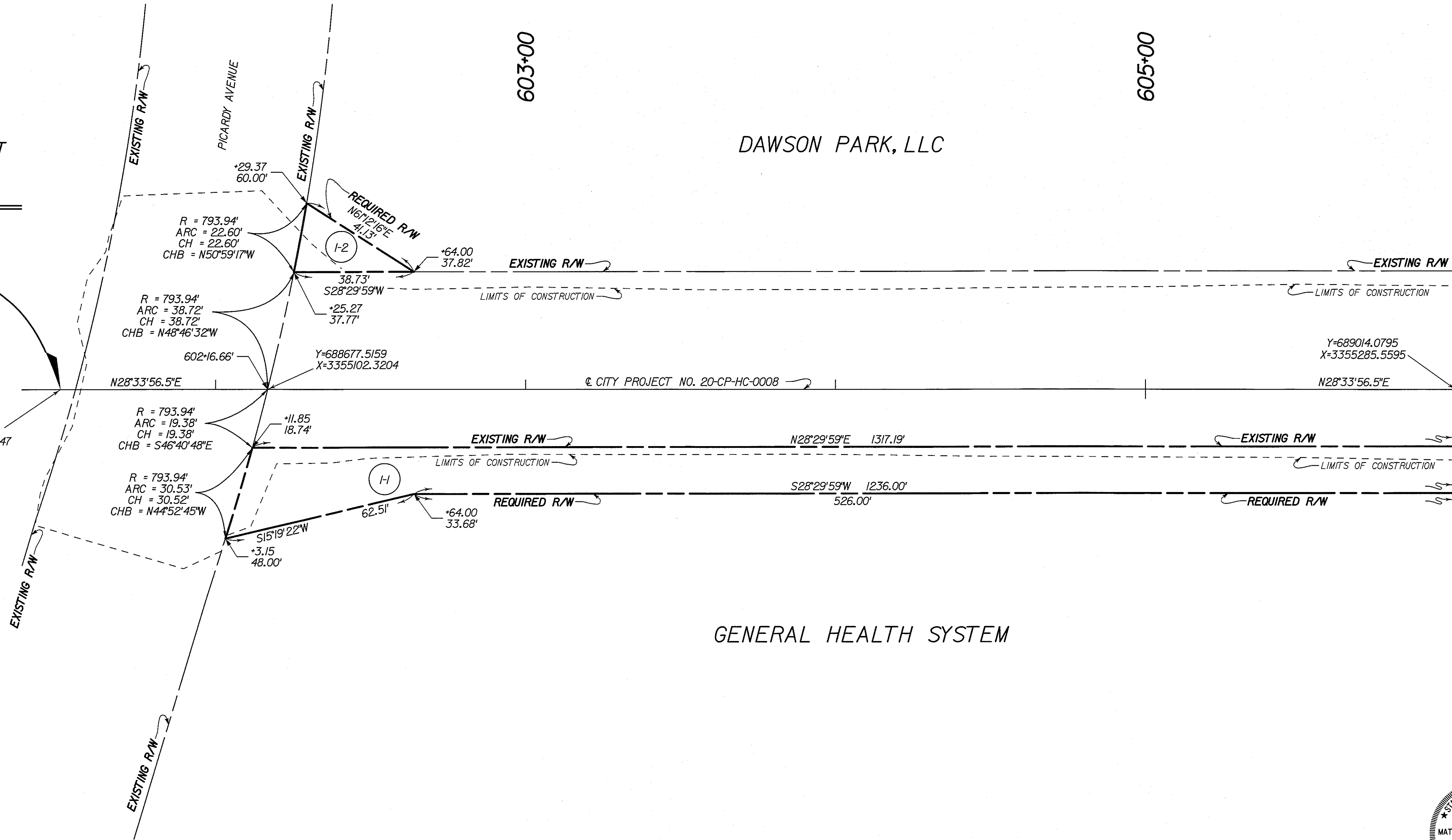
- ALL PIPES AND MONUMENTS SHOWN HEREON WERE FOUND.
- THE COORDINATES AND BEARINGS SHOWN HEREON ARE BASED ON LOUISIANA STATE PLANE COORDINATE SYSTEM, 1702 SOUTH ZONE (NAD 83 (2011) EPOCH 2010.00) TO CONVERT FROM GRID BEARINGS TO TRUE BEARINGS USE: 00°07'04.4"

BASE STATIONS:

DSTR, DH9596, DESTREHAN H.S. CORRS ARP LAT=N29°57'52.39573" LONG=W90°22'56.00715" Y=533851.99 X=3581993.35	FSHS, DF8074, FRANKLIN HIGH SCH CORRS ARP LAT=N29°48'19.10324" LONG=W91°30'08.05125" Y=474730.25 X=3227265.77	SJBI, DF8160, SJB GROUP COOP CORRS ARP LAT=N30°23'45.83085" LONG=W91°06'25.85434" Y=689601.48 X=3352133.18
---	--	---

- DISTANCES SHOWN ARE HORIZONTAL GROUND DISTANCES. TO CONVERT DISTANCES DERIVED FROM COORDINATES SHOWN HEREON TO HORIZONTAL GROUND DISTANCES, USE SCALE FACTOR: 0.99994918

BEGIN PROJECT
20-CP-HC-0008
MIDWAY DR.
STA. 601+50.00

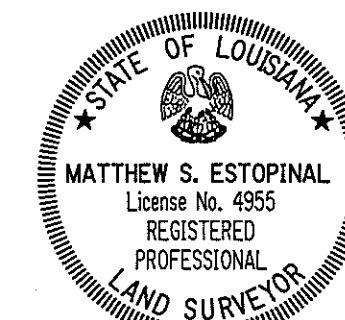


GENERAL HEALTH SYSTEM

DAWSON PARK, LLC

LEGEND

	EXISTING R/W		REQUIRED R/W	RIGHT OF WAY LINE
	EXISTING C. of A.		REQUIRED C. of A.	CONTROL OF ACCESS
	EXIST R/W & EXIST C. of A.		REQ'D R/W & REQ'D C. of A.	RIGHT OF WAY & CONTROL OF ACCESS
				LIMITS OF CONSTRUCTION
				LOT LINE
				APPARENT PROPERTY LINE
				EXISTING SERVITUDE LINE
				SECTION LINE



9/21/21

I HEREBY CERTIFY THAT I MADE A SURVEY ON THE GROUND OF THE PROPERTY SHOWN AND THAT THIS MAP CONFORMS TO THE STANDARDS OF PRACTICE FOR ROUTE SURVEYS AS ESTABLISHED BY THE LOUISIANA STATE BOARD OF REGISTRATION FOR PROFESSIONAL ENGINEERS AND LAND SURVEYORS.
GWS ENGINEERING, INC. (225) 769-1788
8170 HIGHLAND ROAD, BATON ROUGE, LA 70808

SHEET NUMBER	
PARISH	EAST BATON ROUGE
CONTROL SECTION	
CITY PROJECT	20-CP-HC-008
COMPUTED KMK	
CHECKED MSE	
DETAILED TTF	
CHECKED MSE	
DATE	09/21/2021
SCALE	1"=20'
RIGHT OF WAY MAP PROJECT NO. 20-CP-HC-008 MIDWAY DR. (PICARDY AVE. TO CONSTANTIN BLVD) EAST BATON ROUGE PARISH	
GWS	
BY	
REVISION DESCRIPTION	
DATE	

S:\survproj\Inroads Survey\31694 GWS\Phase 20024 MIDWAY\Drawings\20-CP-HC-0008 SHEET 02.dgn
 9/22/2021 18:41
 Final Right of Way Map

NOTES:
 1. ALL PIPES AND MONUMENTS SHOWN HEREON WERE FOUND.
 2. THE COORDINATES AND BEARINGS SHOWN HEREON ARE BASED ON LOUISIANA STATE PLANE COORDINATE SYSTEM, 1702 SOUTH ZONE (NAD 83 (2011) EPOCH 2010.00) TO CONVERT FROM GRID BEARINGS TO TRUE BEARINGS USE: 00°07'05.8"

BASE STATIONS:		
DSTR, DH9596, DESTREHAN H.S. CORS ARP LAT=N29°57'52.39573" LONG=W90°22'56.00715" Y=533851.99 X=3581993.35	FSHS, DF8074, FRANKLIN HIGH SCH CORS ARP LAT=N29°48'19.10324" LONG=W91°30'08.05125" Y=474730.25 X=3227265.77	SJBI, DF8160, SJB GROUP COOP CORS ARP LAT=N30°23'45.83085" LONG=W91°06'25.85434" Y=689601.48 X=3352133.18

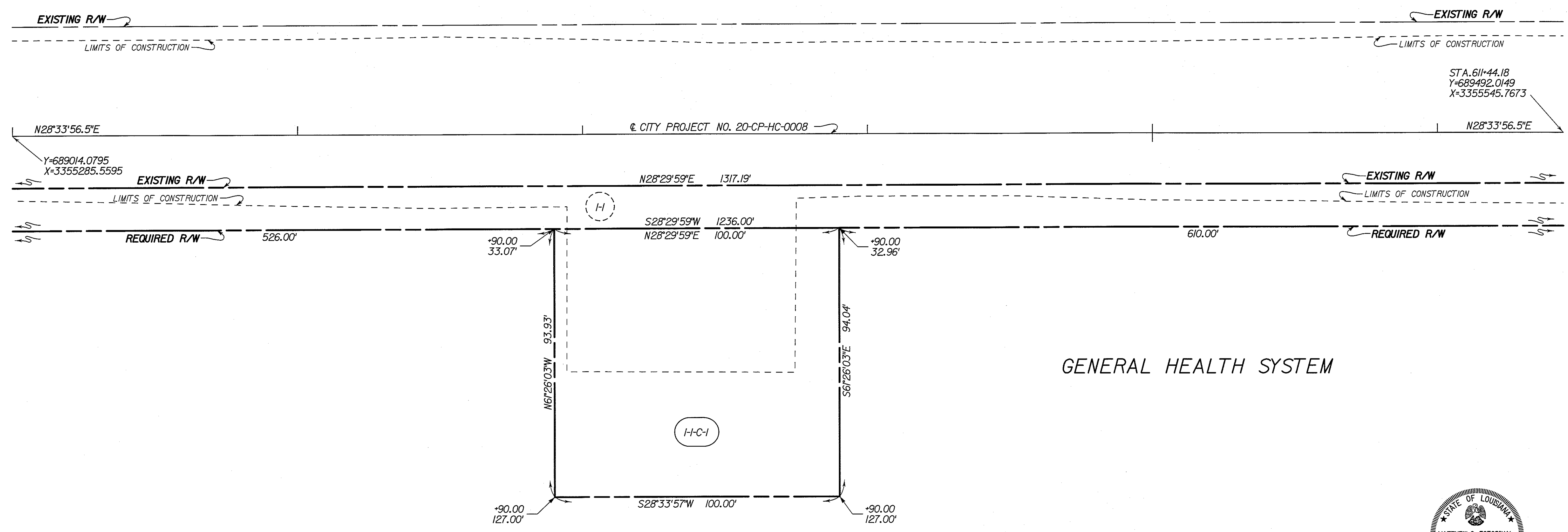
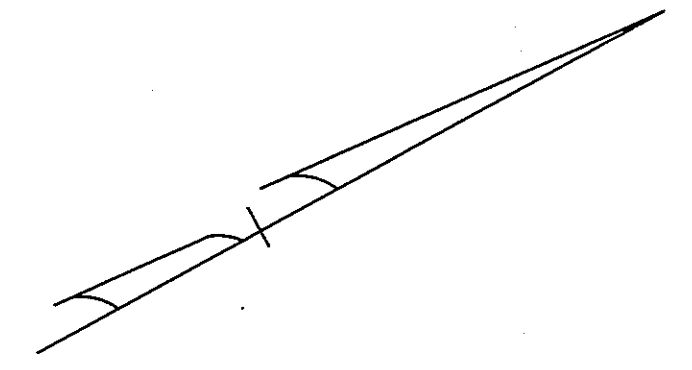
3. DISTANCES SHOWN ARE HORIZONTAL GROUND DISTANCES. TO CONVERT DISTANCES DERIVED FROM COORDINATES SHOWN HEREON TO HORIZONTAL GROUND DISTANCES, USE SCALE FACTOR: 0.99994933

GREENSBURG LAND DISTRICT T7S - R1E SECTION 56

608+00

DAWSON PARK, LLC

610+00



LEGEND

EXISTING R/W	REQUIRED R/W	RIGHT OF WAY LINE
EXISTING C. of A.	REQUIRED C. of A.	CONTROL OF ACCESS
EXIST R/W & EXIST C. of A.	REQ'D R/W & REQ'D C. of A.	RIGHT OF WAY & CONTROL OF ACCESS
		LIMITS OF CONSTRUCTION
		LOT LINE
		APPARENT PROPERTY LINE
		EXISTING SERVITUDE LINE
		SECTION LINE



9/21/21

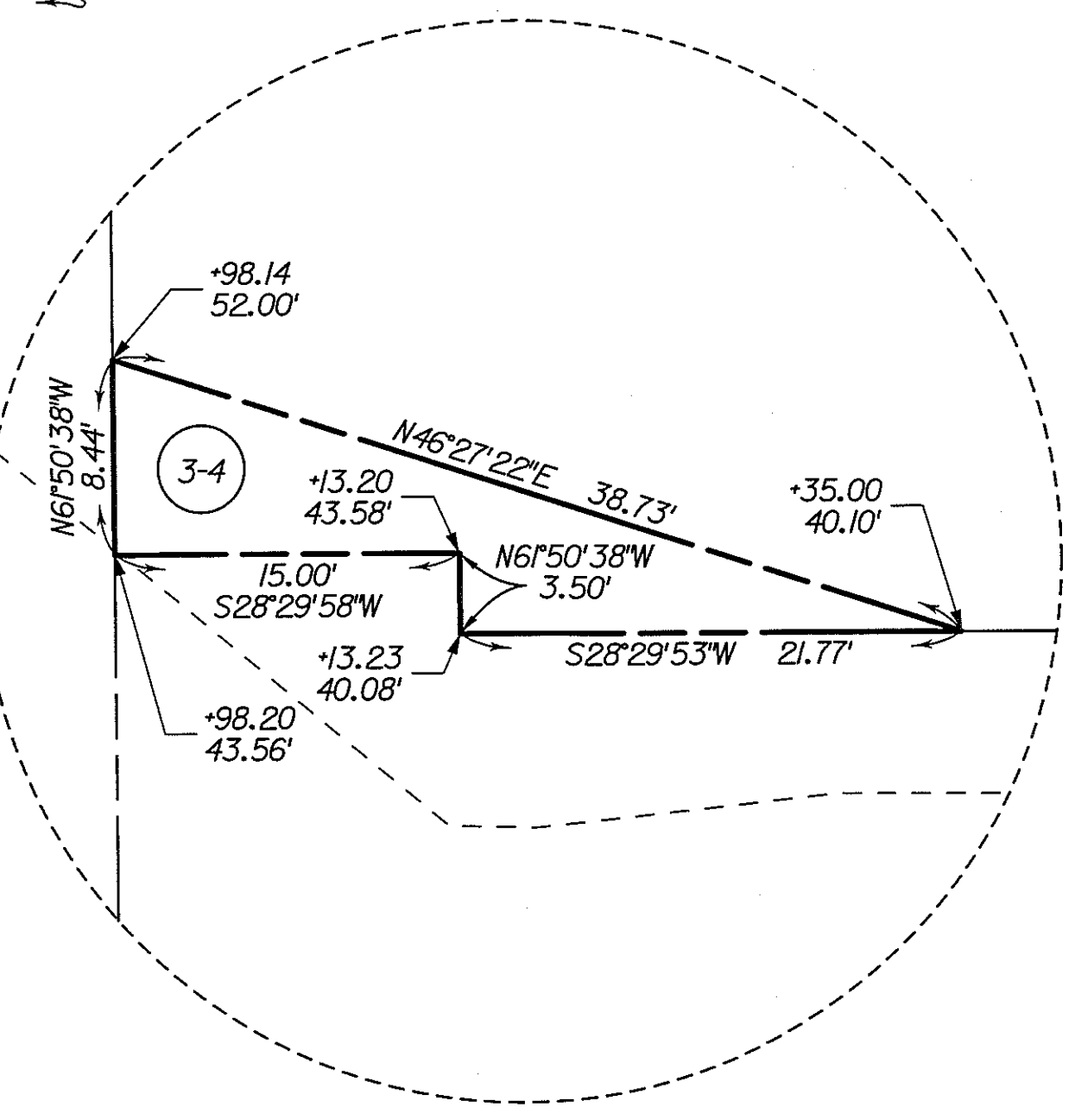
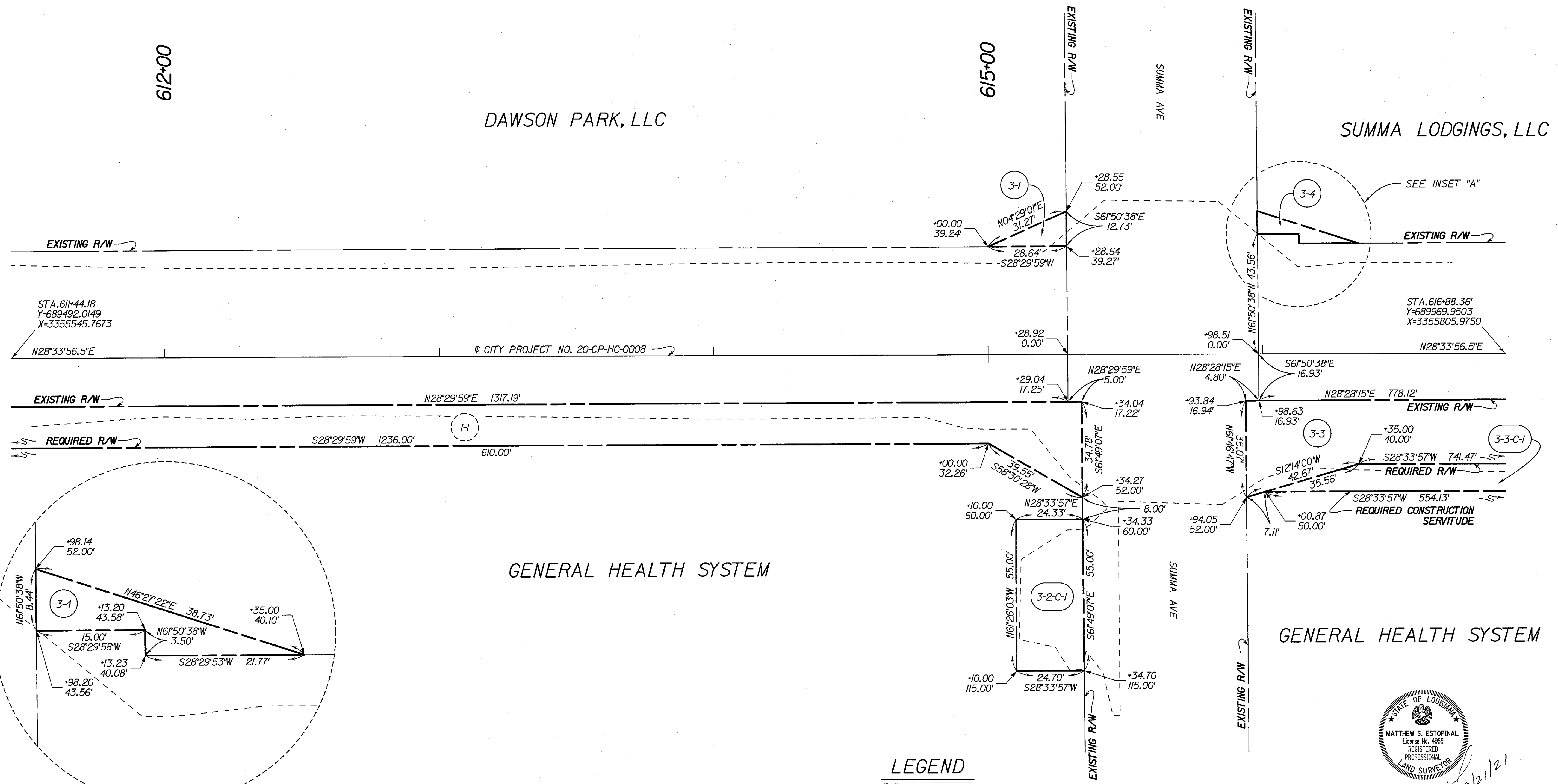
I HEREBY CERTIFY THAT I MADE A SURVEY ON THE GROUND OF THE PROPERTY SHOWN AND THAT THIS MAP CONFORMS TO THE STANDARDS OF PRACTICE FOR ROUTE SURVEYS AS ESTABLISHED BY THE LOUISIANA STATE BOARD OF REGISTRATION FOR PROFESSIONAL ENGINEERS AND LAND SURVEYORS.
 GWS ENGINEERING, INC. (225) 769-1788
 8170 HIGHLAND ROAD, BATON ROUGE, LA 70808

SHEET NUMBER		EAST BATON ROUGE	PARISH	CONTROL SECTION	CITY PROJECT
					20-CP-HC-008
COMPUTED	KM/K				
CHECKED	MSE				
DATE	09/21/2021				
DETAILED	TTF	SCALE	1"=20'		
CHECKED	MSE				
RIGHT OF WAY MAP PROJECT NO. 20-CP-HC-008 MIDWAY DR. (PICARDY AVE. TO CONSTANTIN BLVD) EAST BATON ROUGE PARISH					
GWS					
REVISION	DESCRIPTION	BY			
DATE					

18:41
 9/22/2021
 Final Right of Way Map
 S:\survproj\Inroads Survey\31694 GWS\Phase 20024 MIDWAY\Drawings\20-CP-HC-0008 SHEET 03.dgn

GREENSBURG LAND DISTRICT
T7S - R1E
SECTION 56

NOTES:
 1. ALL PIPES AND MONUMENTS SHOWN HEREON WERE FOUND.
 2. THE COORDINATES AND BEARINGS SHOWN HEREON ARE BASED ON LOUISIANA STATE PLANE COORDINATE SYSTEM, 1702 SOUTH ZONE (NAD 83 (2011) EPOCH 2010.00) TO CONVERT FROM GRID BEARINGS TO TRUE BEARINGS USE: $00^{\circ}07'07.3''$
 BASE STATIONS:
 DSTR, DH9596, DESTREHAN H.S. CORS ARP, LAT=N29°57'52.39573", LONG=W90°22'56.00715", Y=533851.99, X=3581993.35
 FSHS, DF8074, FRANKLIN HIGH SCH CORS ARP, LAT=N29°48'19.10324", LONG=W91°30'08.05125", Y=474730.25, X=3227265.77
 SJB1, DF8160, SJB GROUP COOP CORS ARP, LAT=N30°23'45.83085", LONG=W90°06'25.85434", Y=689601.48, X=3352133.18
 3. DISTANCES SHOWN ARE HORIZONTAL GROUND DISTANCES. TO CONVERT DISTANCES DERIVED FROM COORDINATES SHOWN HEREON TO HORIZONTAL GROUND DISTANCES, USE SCALE FACTOR: 0.99994949



LEGEND

- EXISTING R/W → RIGHT OF WAY LINE
- EXISTING C. of A. → CONTROL OF ACCESS
- EXIST R/W & EXIST C. of A. → RIGHT OF WAY & CONTROL OF ACCESS
- LIMITS OF CONSTRUCTION
- LOT LINE
- APPARENT PROPERTY LINE
- EXISTING SERVITUDE LINE
- SECTION LINE

PARCEL	OWNER	ACQUISITION	AREA	AREA
3-4	SUMMA LODGINGS, LLC	ORIG 535 BNDL 12796 MARCH 2, 2017	0.004 Ac.	167.1 SF
3-3-C-1	GENERAL HEALTH SYSTEM	ORIG 542 BNDL 11907 DECEMBER 20, 2006	0.238 Ac.	10353.2 SF
3-3	GENERAL HEALTH SYSTEM	ORIG 542 BNDL 11907 DECEMBER 20, 2006	0.432 Ac.	18806.7 SF
3-2-C-1	GENERAL HEALTH SYSTEM	ORIG 37 BNDL 12419 JUNE 18, 2012	0.031 Ac.	1348.2 SF
3-1	DAWSON PARK, LLC	ORIG 426 BNDL 13016 MARCH 9, 2020	0.004 Ac.	182.2 SF

I HEREBY CERTIFY THAT I MADE A SURVEY ON THE GROUND OF THE PROPERTY SHOWN AND THAT THIS MAP CONFORMS TO THE STANDARDS OF PRACTICE FOR ROUTE SURVEYS AS ESTABLISHED BY THE LOUISIANA STATE BOARD OF REGISTRATION FOR PROFESSIONAL ENGINEERS AND LAND SURVEYORS.
 GWS ENGINEERING, INC. (225) 769-1788
 8170 HIGHLAND ROAD, BATON ROUGE, LA 70808



SHEET NUMBER	EAST BATON ROUGE	PARISH	CONTROL SECTION	CITY PROJECT	20-CP-HC-008
COMPUTED	KMK	CHECKED	TTF	DATE	09/21/2021
DRAWN	MSE	CHECKED	MSE	SCALE	1"=20'
RIGHT OF WAY MAP PROJECT NO. 20-CP-HC-008 MIDWAY DR. (PICARDY AVE. TO CONSTANTIN BLVD) EAST BATON ROUGE PARISH					
GWS					
BY					
REVISION DESCRIPTION					
DATE					

18:41

9/22/2021



Final Right of Way Map

S:\survproj\Inroads Survey\31694 GWS\Phase 20024 MIDWAY\Drawings\20-CP-HC-0008 SHEET 04.dgn

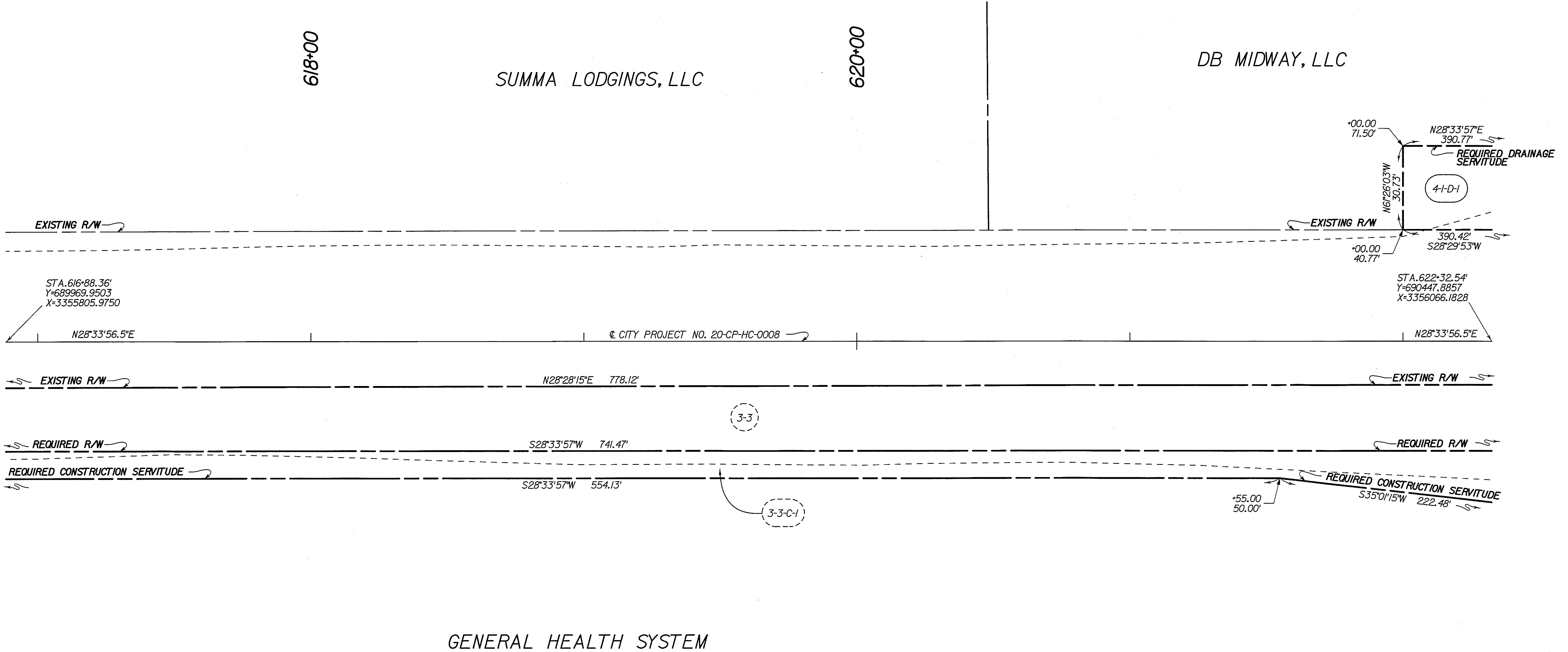
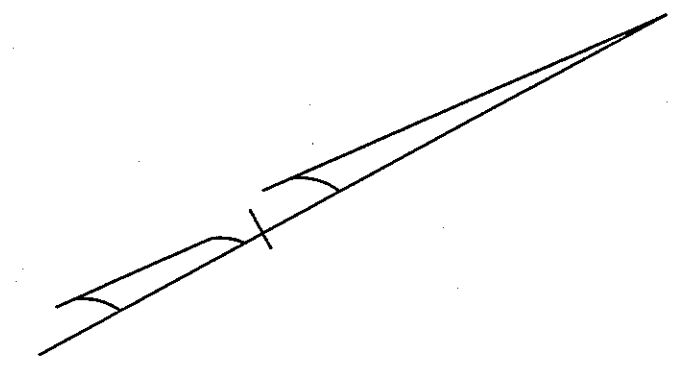
NOTES:

- 1. ALL PIPES AND MONUMENTS SHOWN HEREON WERE FOUND.
- 2. THE COORDINATES AND BEARINGS SHOWN HEREON ARE BASED ON LOUISIANA STATE PLANE COORDINATE SYSTEM, 1702 SOUTH ZONE (NAD 83 (2011) EPOCH 2010.00) TO CONVERT FROM GRID BEARINGS TO TRUE BEARINGS USE: 00°07'08.8" \pm
- 3. DISTANCES SHOWN ARE HORIZONTAL GROUND DISTANCES. TO CONVERT DISTANCES DERIVED FROM COORDINATES SHOWN HEREON TO HORIZONTAL GROUND DISTANCES, USE SCALE FACTOR: 0.99994965

BASE STATIONS:

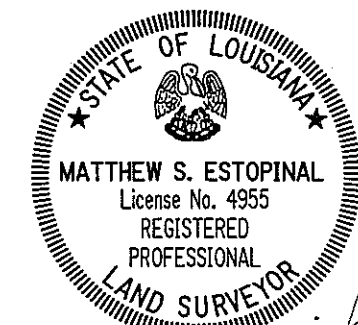
DSTR, DH9596, DESTREHAN H.S. CORP ARP LAT=N29°57'52.39573" LONG=W90°22'56.00715" Y=533851.99 X=3581993.35	FSHS, DF8074, FRANKLIN HIGH SCH CORP ARP LAT=N29°48'19.10324" LONG=W91°30'08.05125" Y=474730.25 X=3227265.77	SJBI, DF8160, SJB GROUP COOP CORP ARP LAT=N30°23'45.83085" LONG=W91°06'25.85434" Y=689601.48 X=3352133.18
--	---	--

GREENSBURG LAND DISTRICT
T7S - R1E
SECTION 56



LEGEND

- EXISTING R/W
- EXISTING C. of A.
- EXIST R/W & EXIST C. of A.
- REQUIRED R/W
- REQUIRED C. of A.
- REQ'D R/W & REQ'D C. of A.
- RIGHT OF WAY LINE
- CONTROL OF ACCESS
- RIGHT OF WAY & CONTROL OF ACCESS
- LIMITS OF CONSTRUCTION
- LOT LINE
- APPARENT PROPERTY LINE
- EXISTING SERVITUDE LINE
- SECTION LINE



9/21/21

I HEREBY CERTIFY THAT I MADE A SURVEY ON THE GROUND OF THE PROPERTY SHOWN AND THAT THIS MAP CONFORMS TO THE STANDARDS OF PRACTICE FOR ROUTE SURVEYS AS ESTABLISHED BY THE LOUISIANA STATE BOARD OF REGISTRATION FOR PROFESSIONAL ENGINEERS AND LAND SURVEYORS.
GWS ENGINEERING, INC. (225) 769-1788
8170 HIGHLAND ROAD, BATON ROUGE, LA 70808

4-I-D-I	DB MIDWAY, LLC	ORIG 139 BNDL 12761	SEPTEMBER 3, 2016	0.273 Ac.	11913.4 SF
PARCEL	OWNER	ACQUISITION		AREA	AREA

SHEET NUMBER	
PROJECT	20-CP-HC-008
CITY	EAST BATON ROUGE
SECTION	
CONTROL	
DATE	09/21/2021
SCALE	1"=20'
COMPUTED	
CHECKED	
K/M/R	
M/S/E	
TTF	
M/S/E	
DATE	
SCALE	
RIGHT OF WAY MAP PROJECT NO. 20-CP-HC-008 MIDWAY DR. (PICARDY AVE. TO CONSTANTIN BLVD) EAST BATON ROUGE PARISH	
GWS	
BY	
REVISION DESCRIPTION	
DATE	

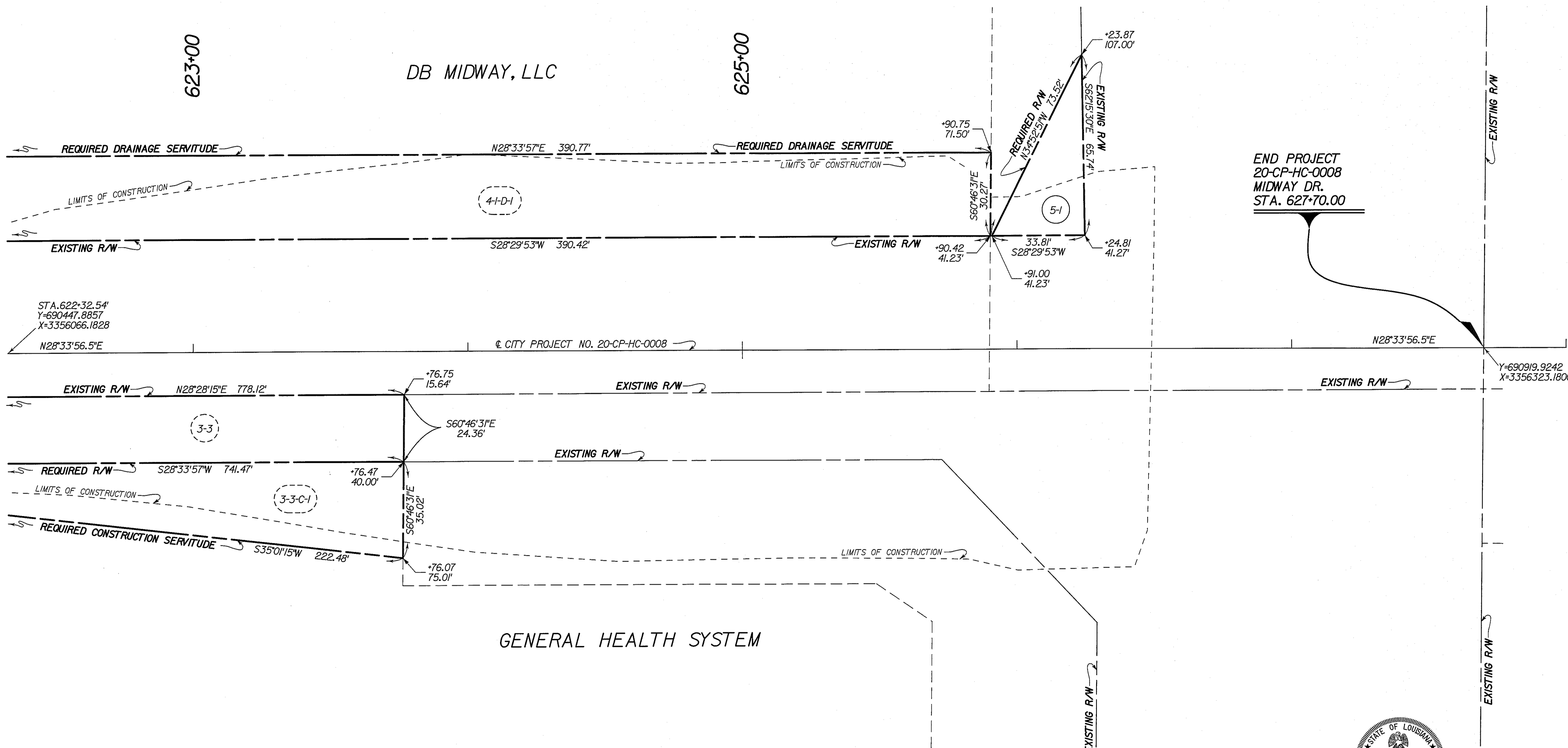
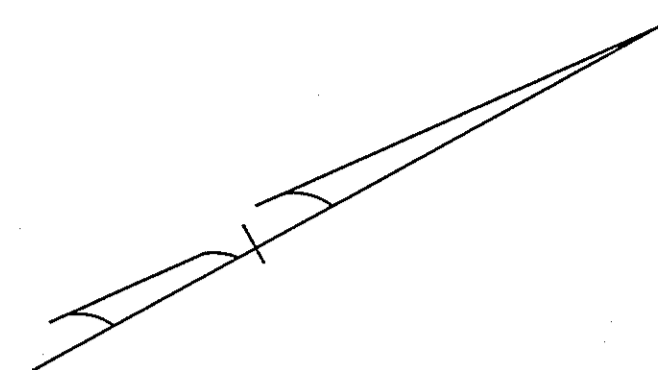
GREENSBURG LAND DISTRICT
T7S - R1E
SECTION 56

NOTES:
1. ALL PIPES AND MONUMENTS SHOWN HEREON WERE FOUND.
2. THE COORDINATES AND BEARINGS SHOWN HEREON ARE BASED ON LOUISIANA STATE PLANE COORDINATE SYSTEM, 1702 SOUTH ZONE (NAD 83 (2011) EPOCH 2010.00) TO CONVERT FROM GRID BEARINGS TO TRUE BEARINGS
USE: 00°07'10.3" ±

BASE STATIONS:

DSTR, DH9596, DESTREHAN H.S. CORS ARP LAT=N29°57'52.39573" LONG=W90°22'56.00715" Y=533851.99 X=3581993.35	FSHS, DF8074, FRANKLIN HIGH SCH CORS ARP LAT=N29°48'19.10324" LONG=W91°30'08.05125" Y=474730.25 X=3227265.77	SJBI, DF8160, SJB GROUP COOP CORS ARP LAT=N30°23'45.83085" LONG=W91°06'25.85434" Y=689601.48 X=3352133.18
--	---	--

3. DISTANCES SHOWN ARE HORIZONTAL GROUND DISTANCES.
TO CONVERT DISTANCES DERIVED FROM COORDINATES SHOWN HEREON TO HORIZONTAL GROUND DISTANCES, USE SCALE FACTOR: 0.99994980



END PROJECT
20-CP-HC-0008
MIDWAY DR.
STA. 627+00.00

GENERAL HEALTH SYSTEM

LEGEND

- EXISTING R/W — RIGHT OF WAY LINE
- EXISTING C. of A. — CONTROL OF ACCESS
- EXIST R/W & EXIST C. of A. — RIGHT OF WAY & CONTROL OF ACCESS
- LIMITS OF CONSTRUCTION --- LIMITS OF CONSTRUCTION
- LOT LINE --- LOT LINE
- APPARENT PROPERTY LINE --- APPARENT PROPERTY LINE
- EXISTING SERVITUDE LINE --- EXISTING SERVITUDE LINE
- SECTION LINE --- SECTION LINE



19/21/21

I HEREBY CERTIFY THAT I MADE A SURVEY ON THE GROUND OF THE PROPERTY SHOWN AND THAT THIS MAP CONFORMS TO THE STANDARDS OF PRACTICE FOR ROUTE SURVEYS AS ESTABLISHED BY THE LOUISIANA STATE BOARD OF REGISTRATION FOR PROFESSIONAL ENGINEERS AND LAND SURVEYORS.
GWS ENGINEERING, INC. (225) 769-1788
8170 HIGHLAND ROAD, BATON ROUGE, LA 70808

5-1	DB MIDWAY, LLC	ORIG 139 BNDL 12761	SEPTEMBER 3, 2016	0.026 Ac.	1111.3 SF
PARCEL	OWNER	ACQUISITION		AREA	AREA

S:\survproj\Inroads Survey\31694 GWS\Phase 20024 MIDWAY\Drawings\20-CP-HC-0008 SHEET 05.dgn 9/22/2021 18:41

SHEET NUMBER	EAST BATON ROUGE
PARISH	CONTROL SECTION
CITY	PROJECT
DATE	20-CP-HC-008
SCALE	
COMPUTED	09/21/2021
CHECKED	1"=20'
DATE	
SCALE	
COMPUTED	
CHECKED	
DATE	
SCALE	
COMPUTED	
CHECKED	
DATE	
SCALE	
COMPUTED	
CHECKED	
DATE	
SCALE	
COMPUTED	
CHECKED	
DATE	
SCALE	

GREENSBURG LAND DISTRICT
T7S - R1E
SECTION 56

BEGIN PROJECT
20-CP-HC-0008
MIDWAY DR.
STA. 601+50.00

END PROJECT
20-CP-HC-0008
MIDWAY DR.
STA. 627+70.00

DAWSON PARK, LLC
R.A.=5.354 Ac. Approx.
(SCALED)

SUMMA
LODGINGS, LLC
R.A.=1.934 Ac. Approx.
(SCALED)

DB MIDWAY, LLC
R.A.=2.504 Ac. Approx.
(SCALED)

GENERAL HEALTH SYSTEM
R.A.=39.710 Ac. Approx.
(SCALED)

GENERAL HEALTH SYSTEM
R.A.=39.849 Ac. Approx.
(SCALED)

☉ CITY PROJECT NO. 20-CP-HC-0008

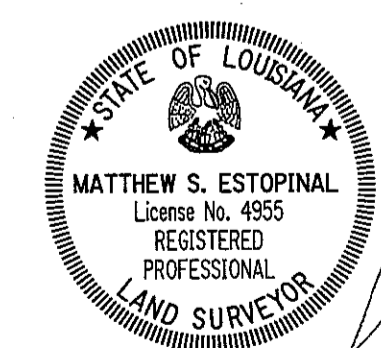
LEGEND

- EXISTING R/W → RIGHT OF WAY LINE
- REQUIRED R/W → RIGHT OF WAY LINE
- EXISTING C. of A. → CONTROL OF ACCESS
- REQUIRED C. of A. → CONTROL OF ACCESS
- EXIST R/W & EXIST. C. of A. → RIGHT OF WAY & CONTROL OF ACCESS
- REQ'D R/W & REQ'D C. of A. → RIGHT OF WAY & CONTROL OF ACCESS
- LIMITS OF CONSTRUCTION
- LOT LINE
- APPARENT PROPERTY LINE
- EXISTING SERVITUDE LINE
- SECTION LINE

SECTION 55
SECTION 58

SECTION 58
SECTION 56

SECTION 56
SECTION 57



9/21/21

I HEREBY CERTIFY THAT I MADE A SURVEY ON THE GROUND OF THE PROPERTY SHOWN AND THAT THIS MAP CONFORMS TO THE STANDARDS OF PRACTICE FOR ROUTE SURVEYS AS ESTABLISHED BY THE LOUISIANA STATE BOARD OF REGISTRATION FOR PROFESSIONAL ENGINEERS AND LAND SURVEYORS.
GWS ENGINEERING, INC. (225) 769-1788
8170 HIGHLAND ROAD, BATON ROUGE, LA 70808

S:\survproj\Inroads Survey\31694 GWS\Phase 20024 MIDWAY\Drawings\20-CP-HC-0008 SHEET 06.dgn
9/22/2021 18:41

SHEET NUMBER	
EAST BATON ROUGE	20-CP-HC-008
PARISH	CONTROL SECTION
424-04	424-04
DATE	SCALE
09/21/2021	1" = 150'
RIGHT OF WAY MAP PROJECT NO. 20-CP-HC-008 MIDWAY DR. (PICARDY AVE. TO CONSTANTIN BLVD) EAST BATON ROUGE PARISH	
GWS	
BY	REVISION DESCRIPTION
DATE	