

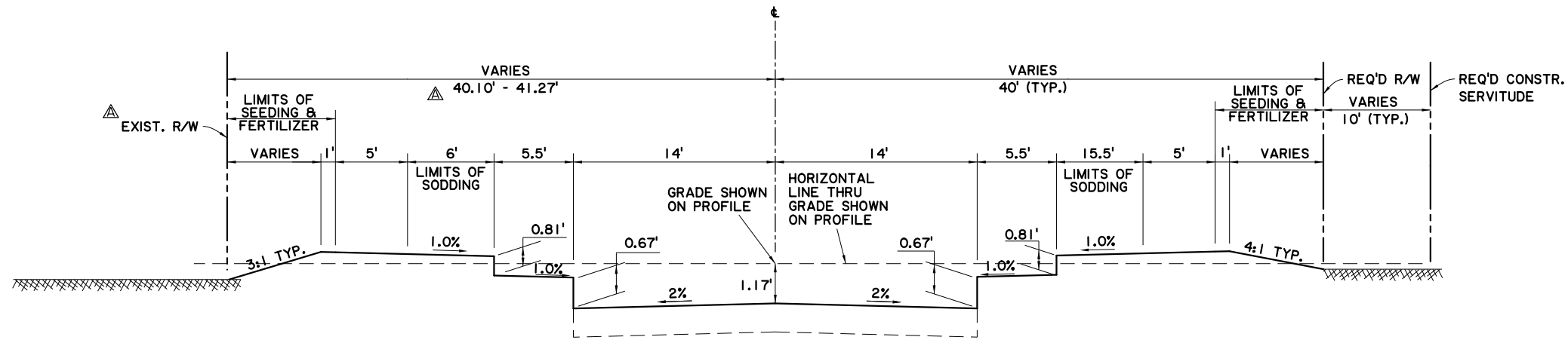


SUMMARY OF ESTIMATED QUANTITIES				
ITEM	DESCRIPTION	UNIT	QUANTITY (MOVEBR)	QUANTITY (DES-SEWER)
9030500	TEMPORARY SILT FENCING	LF	4744	
9030800	SEED	LB	40	
9030900	FERTILIZER	LB	1345	
9031000	WATER	MGAL	59	
9031500	SLAB SOD	SY	5348	
9031600	STORM WATER POLLUTION PREVENTION PLAN	LUMP SUM	LUMP SUM	
9040400	TOP DRESSING MULCH	SY	137	
9040118	PLANT (NUTALL OAK, 3 INCH CAL, 10' MIN. HEIGHT)	EACH	47	
9040119	PLANT (LIVE OAK, 3 INCH CAL, 10' MIN HEIGHT)	EACH	47	
9040120	PLANT (SWEET BAY MAGNOLIA, 3 INCH CAL, 10' MIN HEIGHT)	EACH	6	
9050100	TEMPORARY SIGNS AND BARRICADES	LUMP SUM	LUMP SUM	
9050200	TRAFFIC SIGNS	SF	166.3	
9050804	PLASTIC TRAFFIC STRIPING (4" WIDTH)	LF	6276	
9050808	PLASTIC TRAFFIC STRIPING (8" WIDTH)	LF	200	
9050812	PLASTIC TRAFFIC STRIPING (12" WIDTH)	LF	144	
9050824	PLASTIC TRAFFIC STRIPING (24" WIDTH)	LF	755	
9051001	PLASTIC LEGENDS AND SYMBOLS (SINGLE HEAD ARROW)	EACH	2	
9051003	PLASTIC LEGENDS AND SYMBOLS ("ONLY")	EACH	2	
9051009	PLASTIC LEGENDS AND SYMBOLS (BICYCLE & ARROW SYMBOL)	EACH	12	
9051100	RAISED PAVEMENT MARKERS	EACH	109	
9070106	INTEGRAL CONCRETE CURB (6" BARRIER)	LF	23	
9070200	CONCRETE CURB AND GUTTER (2 FT. WIDE)	LF	800	
9070201	CONCRETE CURB AND GUTTER (1.5' WIDE)	LF	26	
9070202	CONCRETE CURB AND GUTTER (2' MODIFIED)	LF	4407	
9070304	4' CONCRETE WALK	SY	130.8	
9070306	6' CONCRETE WALK	SY	224.1	
9070408	CONCRETE DRIVE (8" THICK)	SY	62.4	
9070604	4" INCIDENTAL CONCRETE PAVING	SY	0	
9090100	MOBILIZATION	LUMP SUM	LUMP SUM	
9140100	PRE-CONSTRUCTION VIDEO	LUMP SUM	LUMP SUM	
9900001	TEMPORARY STONE CONSTRUCTION ENTRANCE	EACH	3	
9900004	PAYMENT ADJUSTMENT (ASPHALT CEMENT & FUELS)	DOL	25100	
9900006	TRUNCATED DOME INSET	EACH	17	
9900014	SETTLEMENT PLATE INSTALLATION AND MONITORING	EACH	4	
9900028	ROADWAY LIGHTING SYSTEM	LUMP SUM	LUMP SUM	
9900029	COLORLED SURFACE TREATMENT (BIKE LANES)	SY	100	
9900030	ASPHALT CONCRETE PAVEMENT (WEARING COURSE 2F)	TON	1010.8	
9900031	ASPHALT CONCRETE PAVEMENT (BINDER COURSE 2)	TON	1417.3	
9900032	STORMWATER STORAGE/ INFILTRATION BED (AGGREGATE BASE COURSE)	CY	335.1	

**CHANGE ORDER AND/OR SPECIAL AGREEMENT**

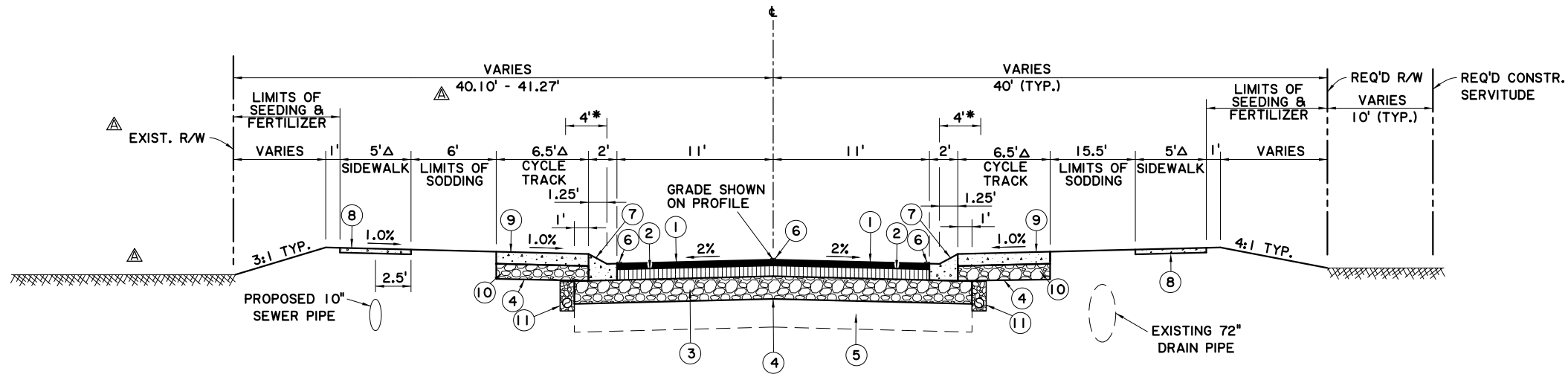
MARY FRANCES BRATTON  
 REG. No. 41444  
 REGISTERED PROFESSIONAL ENGINEER  
 IN  
 CIVIL ENGINEERING  
 9/30/2021

		<b>MASTER SUMMARY SHEET</b>				DESIGNED: MFB CHECKED: GDH		PARISH: EAST BATON ROUGE PARISH	
MIDWAY DR. (PICARDY AVE. TO CONSTANTIN BLVD.)		NO. DATE 1-31-23 5-17-22 11/09/21		REVISION DESCRIPTION REVISOR CHANGED QUANTITY REVISOR		CITY PROJECT: 20-CP-HC-0008 STATE PROJECT: -		SHEET NUMBER: 2aB	



**TYPICAL GRADING SECTION**

APPLIES STA. 616+22.00 TO STA. 626+44.95 (MIDWAY DR.) (N.T.S.)



**TYPICAL FINISHED SECTION**

APPLIES STA. 616+22.00 TO STA. 626+44.95 (MIDWAY DR.) (N.T.S.)

**LEGEND**

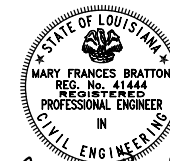
- ① 2" ASPHALT CONCRETE WEARING COURSE (LEVEL 2F)
- ② 4" ASPHALT CONCRETE BINDER COURSE (LEVEL 2)
- ③ STONE BASE COURSE (8" THICK)
- ④ GEOTEXTILE FABRIC
- ⑤ TYPE D SUBGRADE TREATMENT (12" THICK) (9% BY VOLUME) (IN LOCATIONS OF CUT)
- ⑥ PAVEMENT MARKERS AND STRIPING
- ⑦ MODIFIED MOUNTABLE CURB & GUTTER (SEE DETAIL ON SHEET 3b)
- ⑧ 5" PERVIOUS CONCRETE
- △ ⑨ 6" PERVIOUS CONCRETE
- ⑩ 3.75" STORMWATER STORAGE/INFILTRATION BED (AGGREGATE BASE COURSE)
- ⑪ SHOULDER UNDERDRAIN SYSTEM (OUTFALLS TO BE STUBBED INTO SUBSURFACE DRAINAGE SYSTEM) (SEE DETAIL ON SHEET 3b)

- \* REQ'D LATERAL OFFSET
- △ PERVIOUS PAVEMENT ENDS AT STA. 625+75.22 LT. & STA. 625+84.73 RT. SIDEWALK/CYCLE TRACK TO BE 6" CONCRETE WALK FROM STA. 625+75.22 TO STA. 626+39.62 LT. & STA. 625+84.73 TO STA. 626+42.63 RT. SEE PLAN SHEET FOR ADDITIONAL INFORMATION.

**NOTES:**

1. FOR GEOMETRIC DETAILS OF ROADWAY, SIDEWALK, & CYCLE TRACK, SEE GEOMETRIC DETAILS SHEETS AND PLAN & PROFILE SHEETS.
2. FOR GRAPHICAL GRADES OF ROADWAY, SEE GRAPHICAL LAYOUT SHEETS.
3. FOR STRIPING LAYOUT AND DETAILS, SEE PAVEMENT MARKINGS AND SIGNING SHEETS
4. THE SECTION TO BE USED AT ANY PARTICULAR LOCATION SHALL BE AS SHOWN ON CROSS SECTIONS UNLESS DIRECTED OTHERWISE BY THE PROJECT ENGINEER AND APPROVED BY THE CITY.
5. THIS PROJECT FALLS WITHIN A DUST SENSITIVE AREA. THE CONTRACTOR SHALL BE RESPONSIBLE FOR DUST ABATEMENT MEASURES.

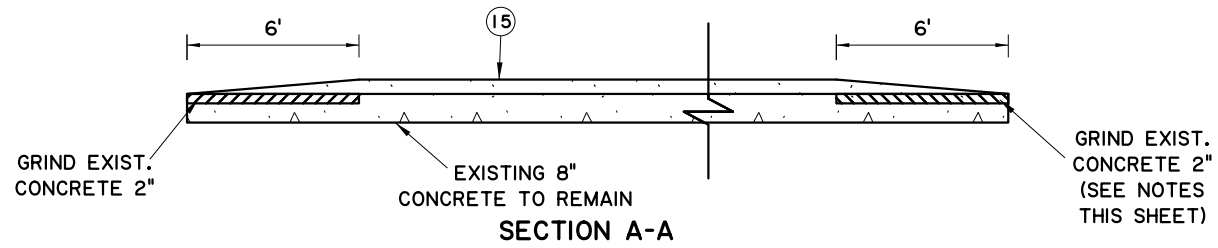
**CHANGE ORDER AND/OR SPECIAL AGREEMENT**



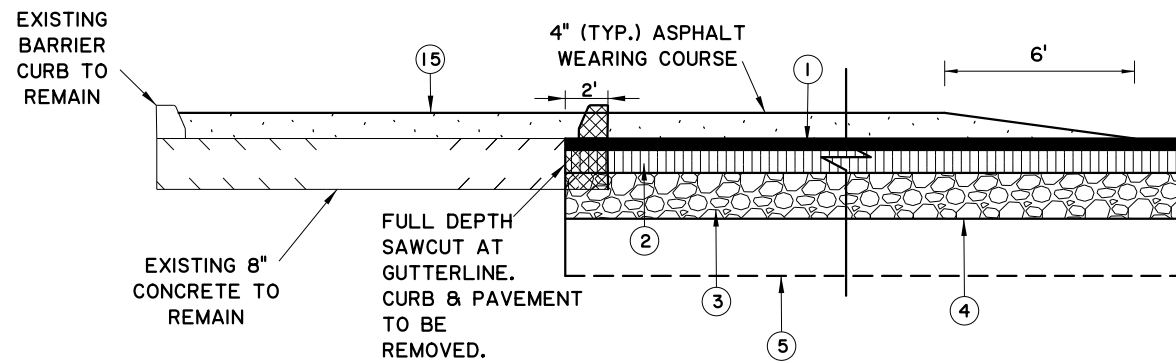
Mary Frances Bratton  
9/30/2021

△ 1-31-23 REVISED NOTE & STATION RANGE

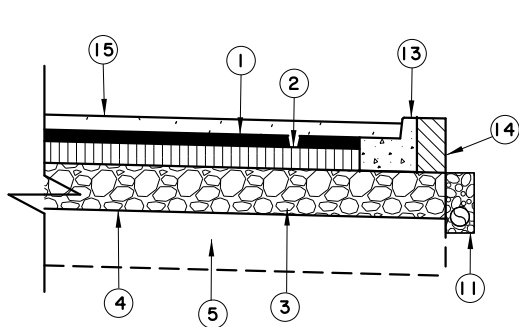
SHEET NUMBER	3aB
PARISH	EAST BATON ROUGE PARISH
CITY PROJECT	20-CP-HC-0008
STATE PROJECT	-
DESIGNED	MFB
CHECKED	GDH
DATE	2 OF 6
REMOVED DRAIN, SERV. : CHANGED DIM. R/W TO CL; CHANGED REQ'D TO EXIST. R/W:	
REMOVED DITCH DETAIL	
NO.	DATE
BY	REVISION DESCRIPTION
<b>MOVEBR</b>	
<b>TYPICAL SECTIONS &amp; DETAILS</b>	
MIDWAY DR. (PICARDY AVE. TO CONSTANTIN BLVD.)	
<b>BR</b> CITY OF BATON ROUGE PLANNING & ENGINEERING	
<b>Stantec</b>	



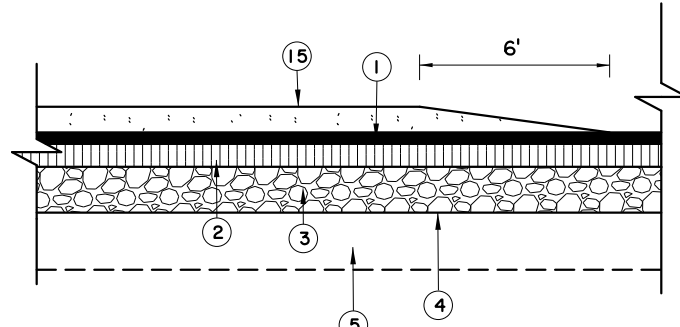
LOCATED AT:  
PICARDY AVE./MIDWAY DR. INTERSECTION  
SUMMA AVE./ MIDWAY DR. INTERSECTION



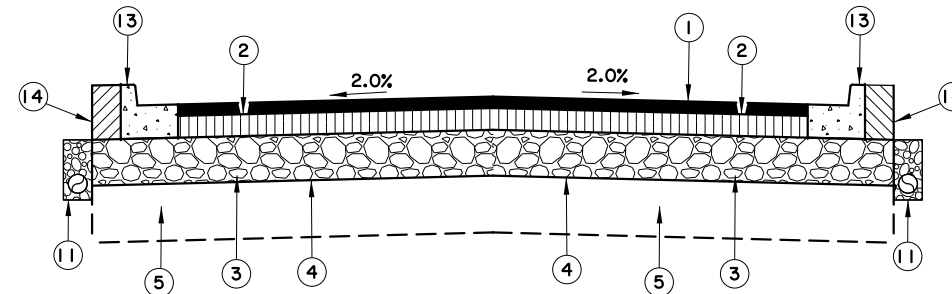
SECTION B-B  
LOCATED AT:  
SUMMA AVE./ MIDWAY DR. INTERSECTION



SECTION C-C  
LOCATED AT:  
PICARDY AVE./MIDWAY DR. INTERSECTION  
SUMMA AVE./ MIDWAY DR. INTERSECTION



SECTION D-D  
LOCATED AT:  
SUMMA AVE./ MIDWAY DR. INTERSECTION



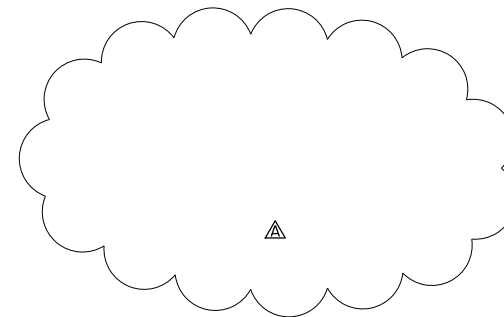
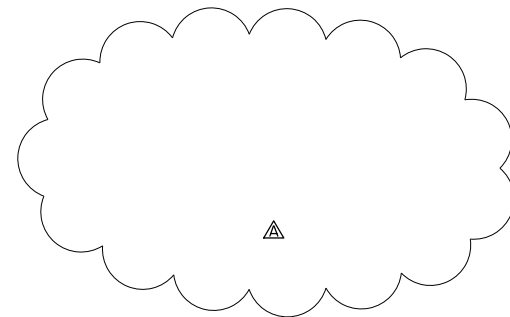
SECTION E-E  
LOCATED AT:  
TURNOUT NEAR STA 608+41.27

NOTES:

1. CONTRACTOR SHALL NOT GRIND EXIST. CONCRETE PAVEMENT AT EXIST. JOINT LOCATIONS. CONTRACTOR SHALL FIELD VERIFY LIMITS OF GRINDING DO NOT CONFLICT WITH JOINT LOCATIONS.
2. AFTER GRINDING, CONTRACTOR SHALL SEAL ANY CRACKS PRIOR TO OVERLAYING. TO BE PAID FOR UNDER PAY ITEM 1149100.

LEGEND

- ① 2" ASPHALT CONCRETE WEARING COURSE (LEVEL 2F)
- ② 4" ASPHALT CONCRETE BINDER COURSE (LEVEL 2)
- ③ STONE BASE COURSE (8" THICK)
- ④ GEOTEXTILE FABRIC
- ⑤ TYPE D SUBGRADE TREATMENT (12" THICK) (9% BY VOLUME) (IN LOCATIONS OF CUT)
- ⑪ SHOULDER UNDERDRAIN SYSTEM (OUTFALLS TO BE STUBBED INTO SUBSURFACE DRAINAGE SYSTEM)
- ⑬ 2' CONCRETE CURB AND GUTTER (6" BARRIER)
- ⑭ EMBANKMENT MATERIAL
- ⑮ 4" ASPHALT CONCRETE WEARING COURSE (LEVEL 2F)



**CHANGE ORDER AND/OR  
SPECIAL AGREEMENT**



SHEET NUMBER	3cA
PARISH	EAST BATON ROUGE PARISH
CITY PROJECT	20-CP-HC-0008
STATE PROJECT	
DESIGNED	MFB
CHECKED	GDH
DETAILED	DTA
CHECKED	MFB
DATE	4 OF 6
SHEET	
NO.	
DATE	
REVISION DESCRIPTION	
BY	



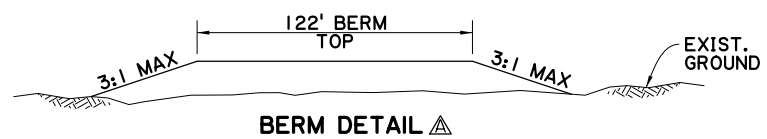
TYPICAL SECTIONS & DETAILS  
MIDWAY DR. (PICARDY AVE. TO CONSTANTIN BLVD.)



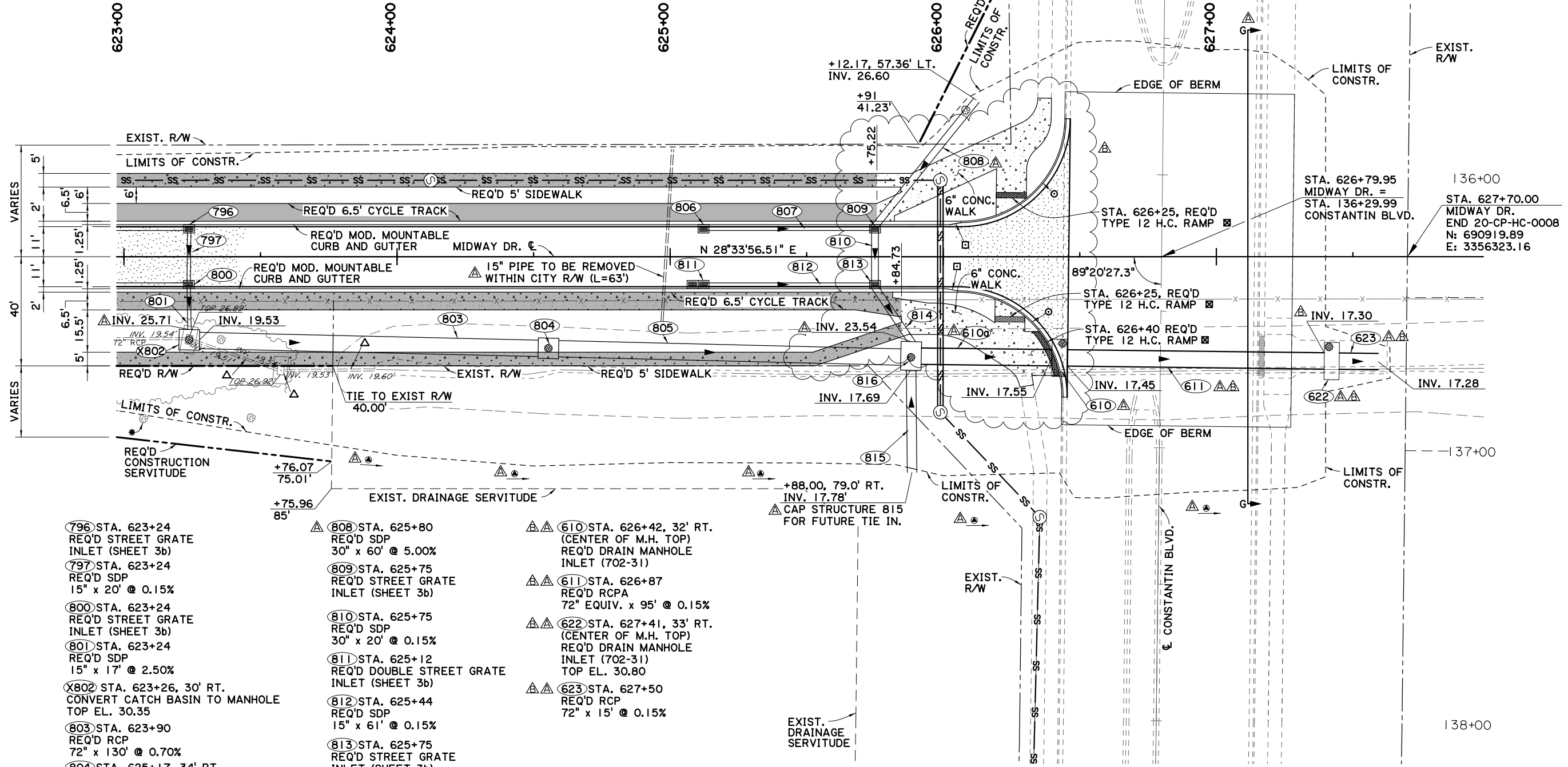
11:11

CHECK PRINTS

V:\2018\active\201802913\03 disciplines\highway\plan development\drawing\change\_order\_2\pp\_14.dgn



- NOTES:**
- CONTRACTOR TO SEED AND FERTILIZE EMBANKMENT AREA TO PREVENT EROSION AFTER SETTLEMENT PERIOD
  - SEE TYPICAL SECTION SHEET 3e FOR ADDITIONAL SETTLEMENT PLATE DETAILS



- |  |  |   |
|--|--|---|
| <p>796 STA. 623+24<br/>REQ'D STREET GRATE<br/>INLET (SHEET 3b)</p> <p>797 STA. 623+24<br/>REQ'D SDP<br/>15" x 20' @ 0.15%</p> <p>800 STA. 623+24<br/>REQ'D STREET GRATE<br/>INLET (SHEET 3b)</p> <p>801 STA. 623+24<br/>REQ'D SDP<br/>15" x 17' @ 2.50%</p> <p>X802 STA. 623+26, 30' RT.<br/>CONVERT CATCH BASIN TO MANHOLE<br/>TOP EL. 30.35</p> <p>803 STA. 623+90<br/>REQ'D RCP<br/>72" x 130' @ 0.70%</p> <p>804 STA. 625+17, 34' RT.<br/>REQ'D DRAIN MANHOLE<br/>INLET (702-31)<br/>TOP EL. 30.25, INV. EL. 18.62</p> <p>805 STA. 625+22<br/>REQ'D RCP<br/>72" x 131' @ 0.75%</p> <p>806 STA. 625+12<br/>REQ'D STREET GRATE<br/>INLET (SHEET 3b)</p> <p>807 STA. 625+44<br/>REQ'D SDP<br/>15" x 61' @ 2.50%</p> | <p>808 STA. 625+80<br/>REQ'D SDP<br/>30" x 60' @ 5.00%</p> <p>809 STA. 625+75<br/>REQ'D STREET GRATE<br/>INLET (SHEET 3b)</p> <p>810 STA. 625+75<br/>REQ'D SDP<br/>30" x 20' @ 0.15%</p> <p>811 STA. 625+12<br/>REQ'D DOUBLE STREET GRATE<br/>INLET (SHEET 3b)</p> <p>812 STA. 625+44<br/>REQ'D SDP<br/>15" x 61' @ 0.15%</p> <p>813 STA. 625+75<br/>REQ'D STREET GRATE<br/>INLET (SHEET 3b)</p> <p>814 STA. 625+82<br/>REQ'D SDP<br/>30" x 25' @ 0.12%</p> <p>815 STA. 625+88<br/>REQ'D RCP<br/>42" x 38' @ 0.25%</p> <p>816 STA. 625+88, 36' RT.<br/>REQ'D DRAIN MANHOLE<br/>INLET (702-31)<br/>TOP EL. 30.55, INV. EL. 17.64</p> <p>610 STA. 626+16<br/>REQ'D RCP<br/>72" x 49' @ 0.19%</p> | <p>610 STA. 626+42, 32' RT.<br/>(CENTER OF M.H. TOP)<br/>REQ'D DRAIN MANHOLE<br/>INLET (702-31)</p> <p>611 STA. 626+87<br/>REQ'D RCPA<br/>72" EQUIV. x 95' @ 0.15%</p> <p>622 STA. 627+41, 33' RT.<br/>(CENTER OF M.H. TOP)<br/>REQ'D DRAIN MANHOLE<br/>INLET (702-31)<br/>TOP EL. 30.80</p> <p>623 STA. 627+50<br/>REQ'D RCP<br/>72" x 15' @ 0.15%</p> |
|--|--|---|

- △ DRAINAGE INLET / PIPE TO BE REMOVED
- \* EXIST TREE TO REMAIN. SEE TREE PROTECTION DETAIL ON SHEET 4.
- ☒ SEE STANDARD PLAN 907-02 FOR CURB & GUTTER HANDICAP RAMP (BARRIER TYPE) DETAILS.
- ☐ TRANSITION MOD. MOUNTABLE CURB TO BARRIER CURB IN 4'.
- REQ'D BARRIER CURB AND GUTTER
- △● GRADE TO DRAIN

- NOTE:**
- CONSTANTIN DR. EXTENSION H.012233 TO BE BUILT BY OTHERS.
  - SEE GRAVITY SEWER PLAN AND PROFILE SHEETS FOR SEWER INFORMATION.
  - SEE DETAIL THIS SHEET FOR SECTION G-G.

**CHANGE ORDER AND/OR SPECIAL AGREEMENT**

Michael E. Neumann  
6/8/22

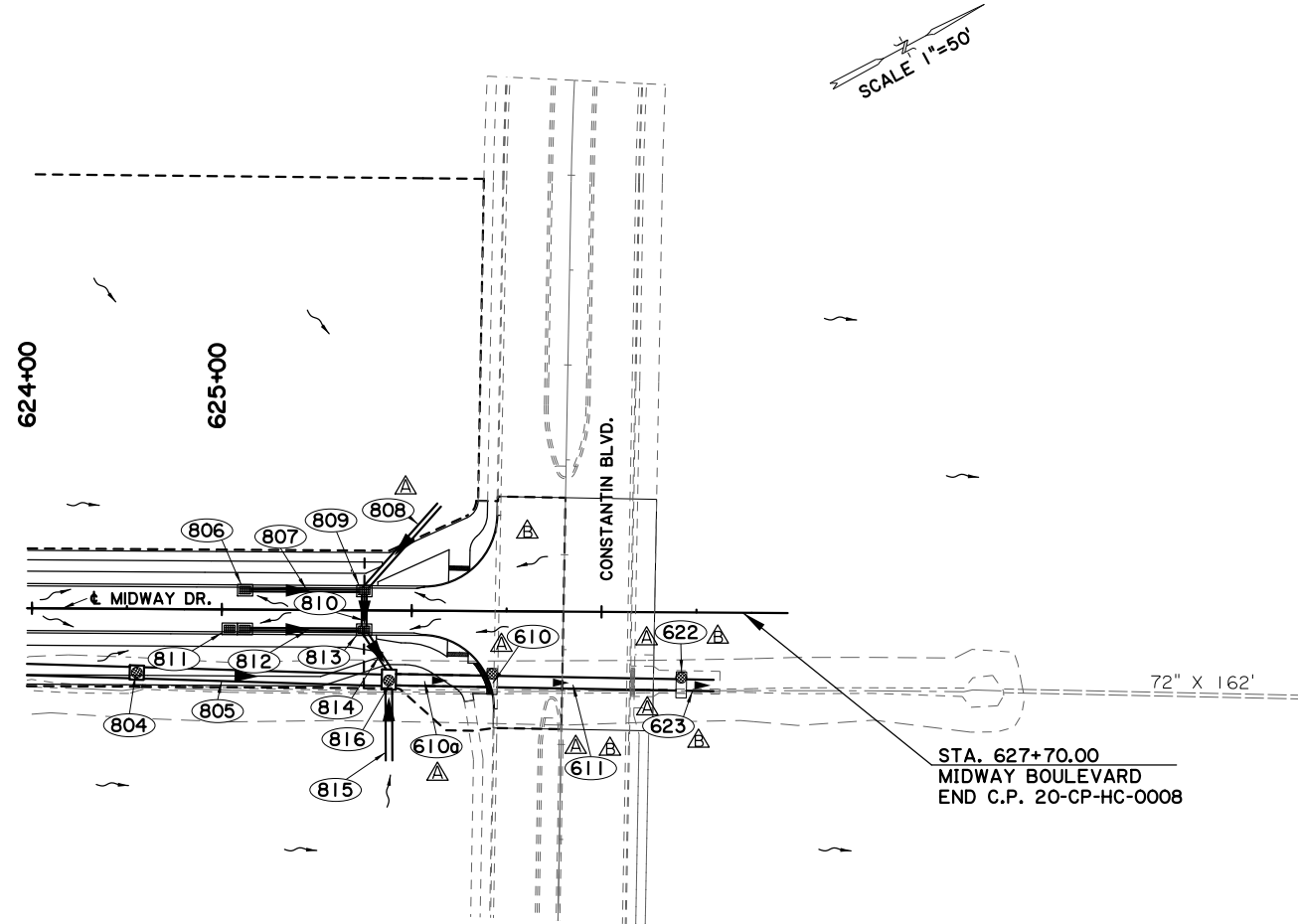
Mary Frances Bratton  
9/30/2021

△ RESPONSIBLE FOR CHANGE ORDER THIS SHEET

SHEET NUMBER	14B	PARISH	EAST BATON ROUGE PARISH	CITY PROJECT	20-CP-HC-0008	STATE PROJECT	-
DESIGNED	MFB	CHECKED	GDH	DETAILED	DTA	CHECKED	MFB
DATE	SHEET	DATE	SHEET	DATE	SHEET	DATE	SHEET
11-17-23	11 OF 12	5-17-22	11 OF 12	5-17-22	11 OF 12	5-17-22	11 OF 12
REVISION DESCRIPTION		NO.		DATE		BY	
1-31-23 REVISED ROAD/SIDEWALK GEOMETRY & DRAINAGE		1		5-17-22		MFB	
5-17-22 UPDATED DRAIN. STR., ADDED DRAIN. NOTE, ADDED BERM DETAIL		2		5-17-22		MFB	

**PLAN AND PROFILE SHEET WITH DRAINAGE**

MIDWAY DR. (PICARDY AVE. TO CONSTANTIN BLVD.)



NOTES:

- DRAINAGE PATTERNS SHOWN OUTSIDE OF THE REQ'D ROW REFLECT EXISTING CONDITIONS AT THE TIME OF THE SURVEY. CURRENTLY ONGOING CONSTRUCTION ON ADJACENT DEVELOPMENTS MAY ALTER EXISTING DRAINAGE PATTERNS ON INDIVIDUAL PROPERTIES.
- DRAINAGE AREA RUNOFF COEFFICIENTS (C) WERE MODIFIED IN ACCORDANCE WITH MOVEBR STANDARDS TO PRODUCE A RUNOFF OF THREE CUBIC FEET PER SECOND RUNOFF PER ACRE FOR AREAS OF ONE ACRE OR LESS. FOR AREAS LARGER THAN ONE ACRE, THE RATIONAL METHOD WAS USED TO CALCULATE RUNOFF.

NOTE:

- STORM SEWER DESIGN CRITERIA
- Q = CIA cfs
  - A = DRAINAGE AREA (ACRES)
  - RAINFALL REGION I
  - C = 0.95 (PAVEMENT) & C = 0.35 (OPEN LAND)
  - DESIGN YEAR = 10 YR. STORM

LEGEND

- DRAINAGE AREA BOUNDARY
- EXISTING DRAINAGE STRUCTURE
- ~> DRAINAGE FLOW PATTERN

STR. NO.	STA.	TYPE/ SIZE x LENGTH	Q (CFS)	A (ACRES)	C
804	625+17	MANHOLE			
805	625+22	72" X 131'	17.87		
806	625+12	STREET GRATE INLET		0.13	0.55
807	625+44	15" X 61'	0.39		
808	625+80	30" X 60'	13.34	2.60	0.85
809	625+75	STREET GRATE INLET		0.11	0.47
810	625+75	30" X 20'	11.91		
811	625+12	DOUBLE STREET GRATE INLET		0.36	0.5
812	625+44	15" X 61'	1.08		
813	625+75	STREET GRATE INLET		0.13	0.46
814	625+82	30" X 25'	13.08		
815	625+88	42" X 38'	40.85	8.20	0.85
816	625+88	MANHOLE			
610	626+42	MANHOLE			
610a	626+16	72" X 49'	34.09		
611	626+87	72" EQUIV. X 95'	35.09		
622	627+41	MANHOLE			
623	627+50	72" X 15'	35.74		

**CHANGE ORDER AND/OR SPECIAL AGREEMENT**

STATE OF LOUISIANA  
 MARY FRANCES BRATTON  
 REG. NO. 41444  
 REGISTERED PROFESSIONAL ENGINEER  
 IN  
 CIVIL ENGINEERING  
*Mary Bratton*  
 9/30/2021

SHEET NUMBER		20B	
PARISH		EAST BATON ROUGE PARISH	
CITY PROJECT		20-CP-HC-0008	
STATE PROJECT		-	
DESIGNED	MEN	DATE	BY
CHECKED	MFB		
REVISION DESCRIPTION		NO.	DATE
1-31-23 REVISED ROAD/SIDEWALK GEOMETRY & DRAINAGE			
5-17-22 UPDATED DRAINAGE AND QAC TABLES			
3 OF 3			

**MOVEBR**

DESIGN DRAINAGE MAP

MIDWAY DR. (PICARDY AVE. TO CONSTANTIN BLVD.)

**BR**  
 CITY OF BATON ROUGE  
 OFFICE OF PUBLIC WORKS

**Stantec**

V:\2018\active\201802913\03 disciplines\highway\plan development\drawing\change\_order\_2\midway\_geo\_24.dgn 11:1:1

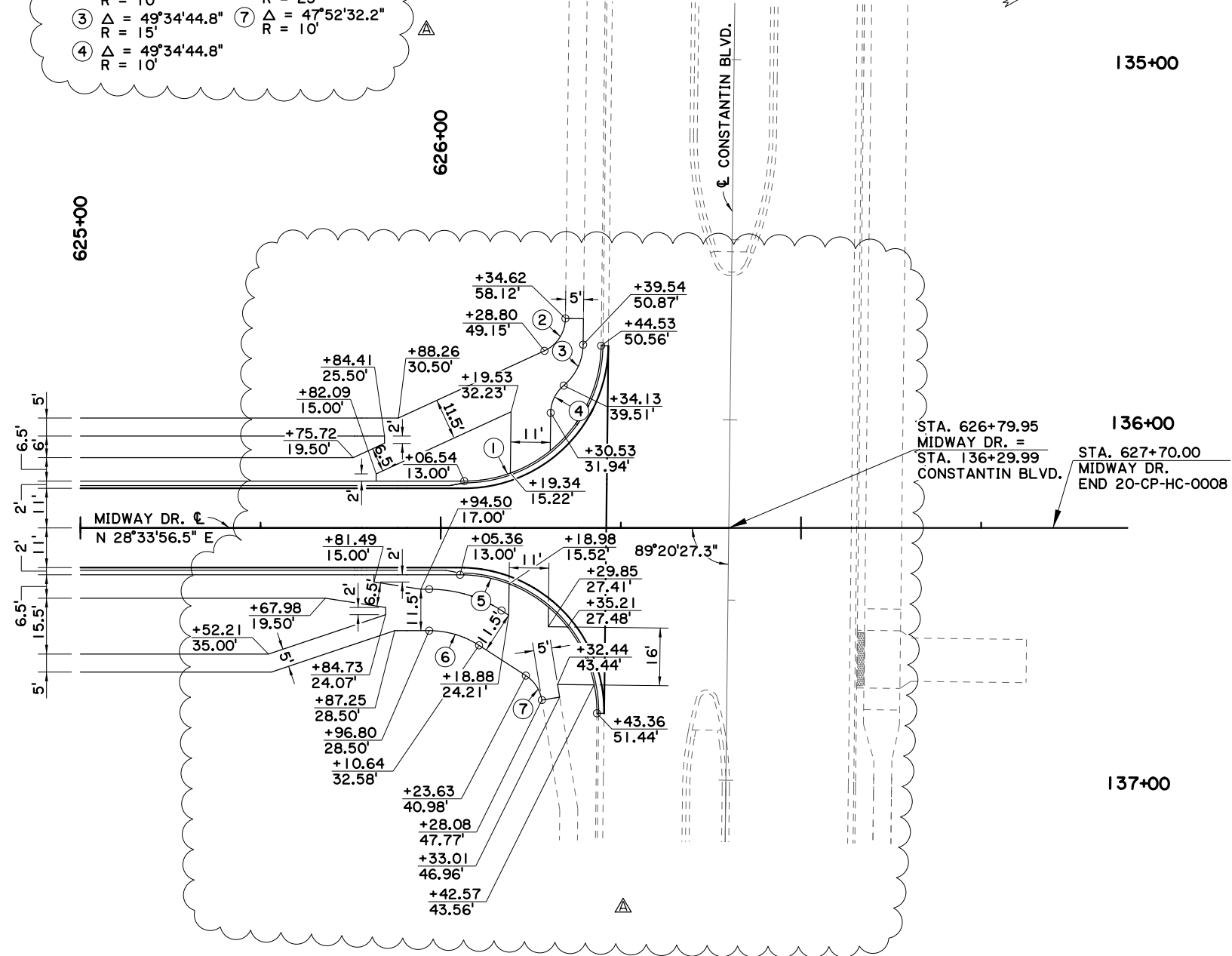
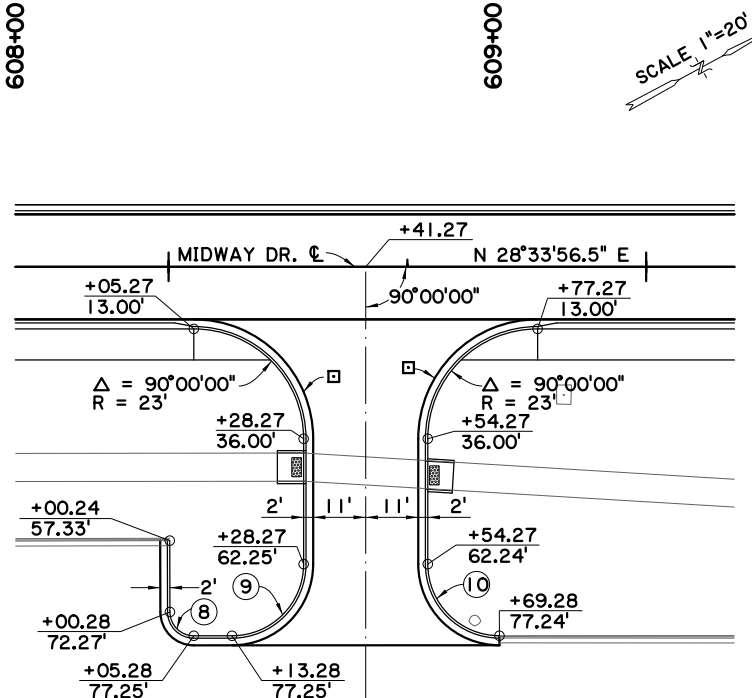
CHECK PRINTS

**LEGEND**  
 □ REQ'D BARRIER CURB & GUTTER

**NOTES:**  
 1. SEE TYPICAL SECTIONS FOR CURB DETAILS.  
 2. STATION AND OFFSET ARE FROM MIDWAY DR. CL.




①  $\Delta = 89^{\circ}20'27.3''$   
 $R = 38'$   
 ②  $\Delta = 64^{\circ}37'53.3''$   
 $R = 10'$   
 ③  $\Delta = 49^{\circ}34'44.8''$   
 $R = 15'$   
 ④  $\Delta = 49^{\circ}34'44.8''$   
 $R = 10'$   
 ⑤  $\Delta = 90^{\circ}39'32.7''$   
 $R = 38'$   
 ⑥  $\Delta = 32^{\circ}51'57.3''$   
 $R = 25'$   
 ⑦  $\Delta = 47^{\circ}52'32.2''$   
 $R = 10'$

SCALE 1"=20'

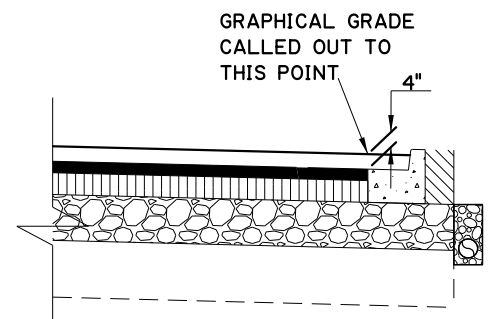
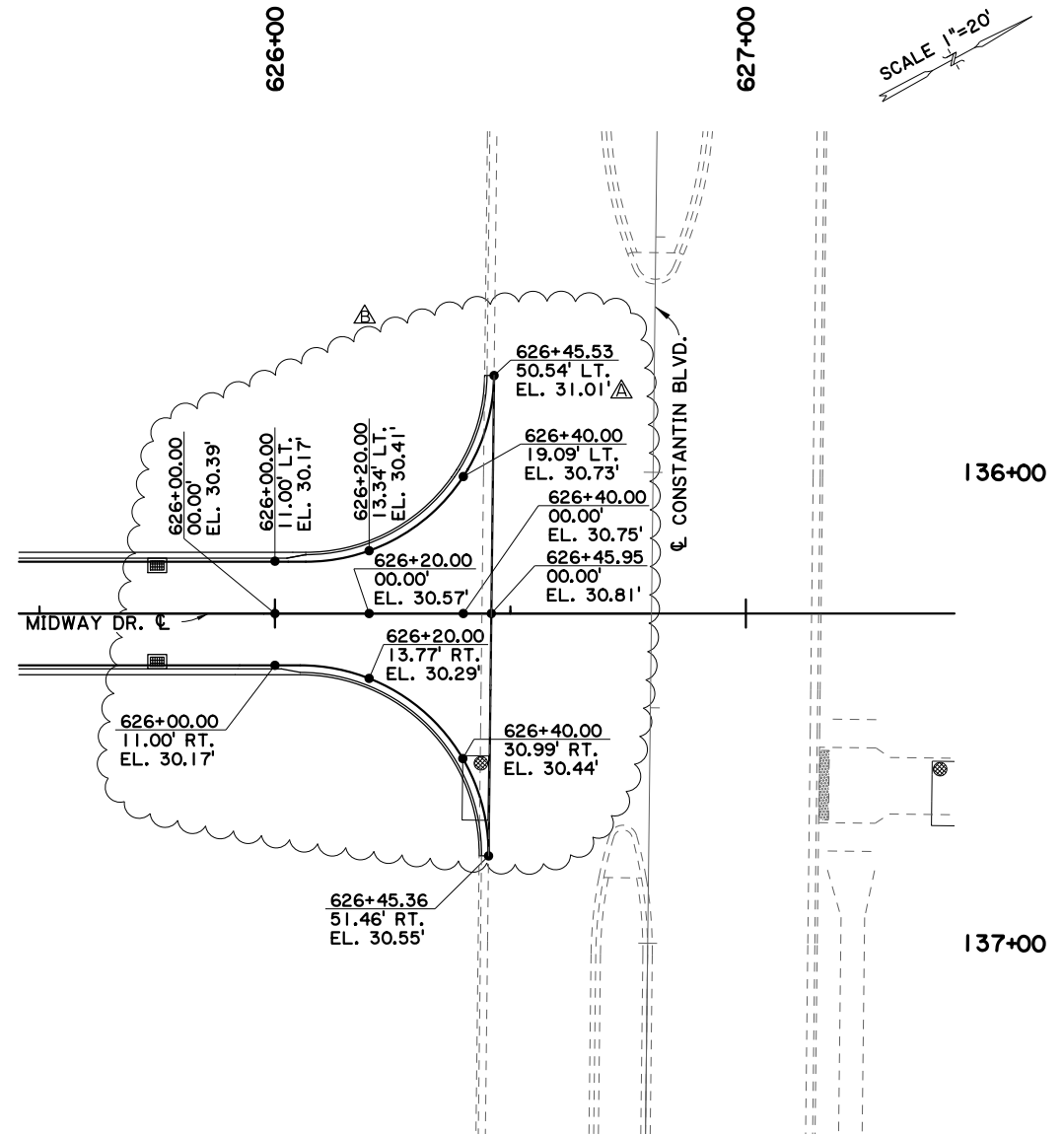
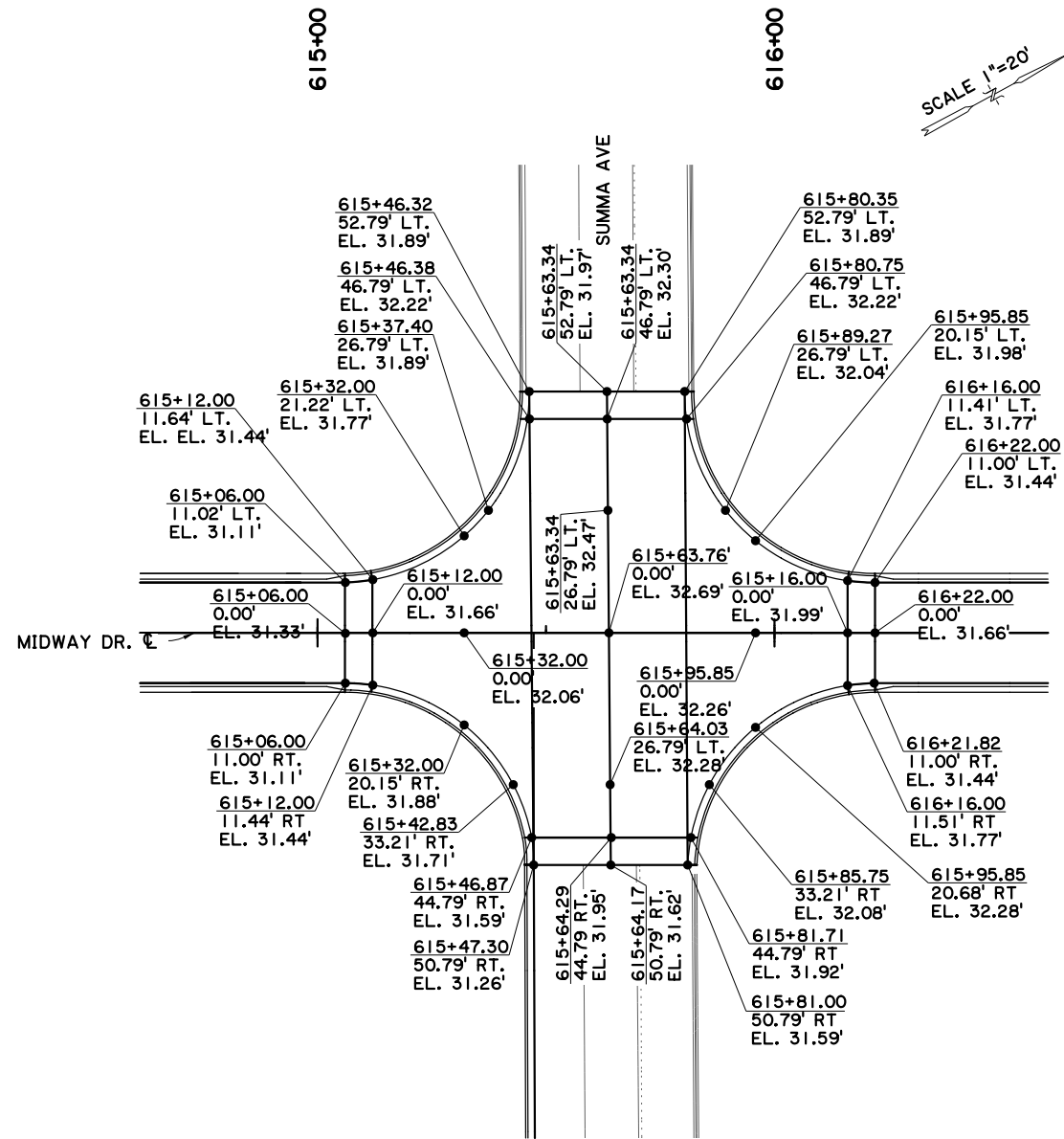


**CHANGE ORDER AND/OR SPECIAL AGREEMENT**

STATE OF LOUISIANA  
 MARY FRANCES BRATTON  
 REG. NO. 41444  
 REGISTERED PROFESSIONAL ENGINEER  
 IN  
 CIVIL ENGINEERING  
 Mary Frances Bratton  
 9/30/2021

SHEET NUMBER	24A
PARISH	EAST BATON ROUGE PARISH
CITY PROJECT	20-CP-HC-0008
STATE PROJECT	-
DESIGNED / MFB	
CHECKED / GDH	
DETAILED / TW	
CHECKED / MFB	
DATE / SHEET	3 OF 3
NO.	
DATE	
REVISION DESCRIPTION	
BY	
 <b>GEOMETRIC DETAILS</b> MIDWAY DR (PICARDY AVE TO CONSTANTIN BLVD)	
 CITY OF BATON ROUGE OFFICE OF PUBLIC WORKS	
	

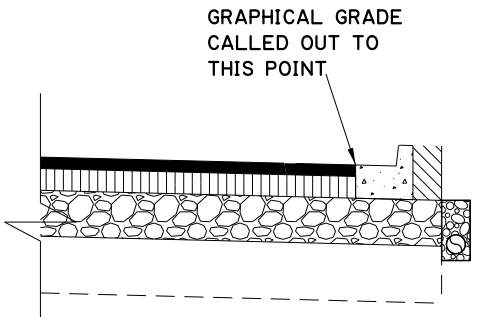
CHECK PRINTS



**CHANGE ORDER AND/OR SPECIAL AGREEMENT**

- NOTES:
1. STATION AND OFFSET ARE FROM MIDWAY DR. ☐.
  2. ELEVATIONS ARE SHOWN AT THE GUTTERLINE. SEE APPLICABLE DETAIL.

STATE OF LOUISIANA  
 MARY FRANCES BRATTON  
 REG. NO. 41444  
 REGISTERED PROFESSIONAL ENGINEER  
 IN  
 CIVIL ENGINEERING  
 Mary Frances Bratton  
 9/30/2021



SHEET NUMBER	250B
PARISH	EAST BATON ROUGE PARISH
CITY PROJECT	20-CP-HC-0008
STATE PROJECT	-
DESIGNED	MFB
CHECKED	GDH
DATE	2 OF 2
REVISION DESCRIPTION	BY
NO.	DATE
1-31-23	REVISED ROADWAY GEOMETRY & GRAPHICAL GRADES
5-17-22	REVISED GRAPHICAL GRADE
GRAPHICAL GRADES LAYOUT	
MIDWAY DR. (PICARDY AVE. TO CONSTANTIN BLVD.)	
BR CITY OF BATON ROUGE	
Stantec	



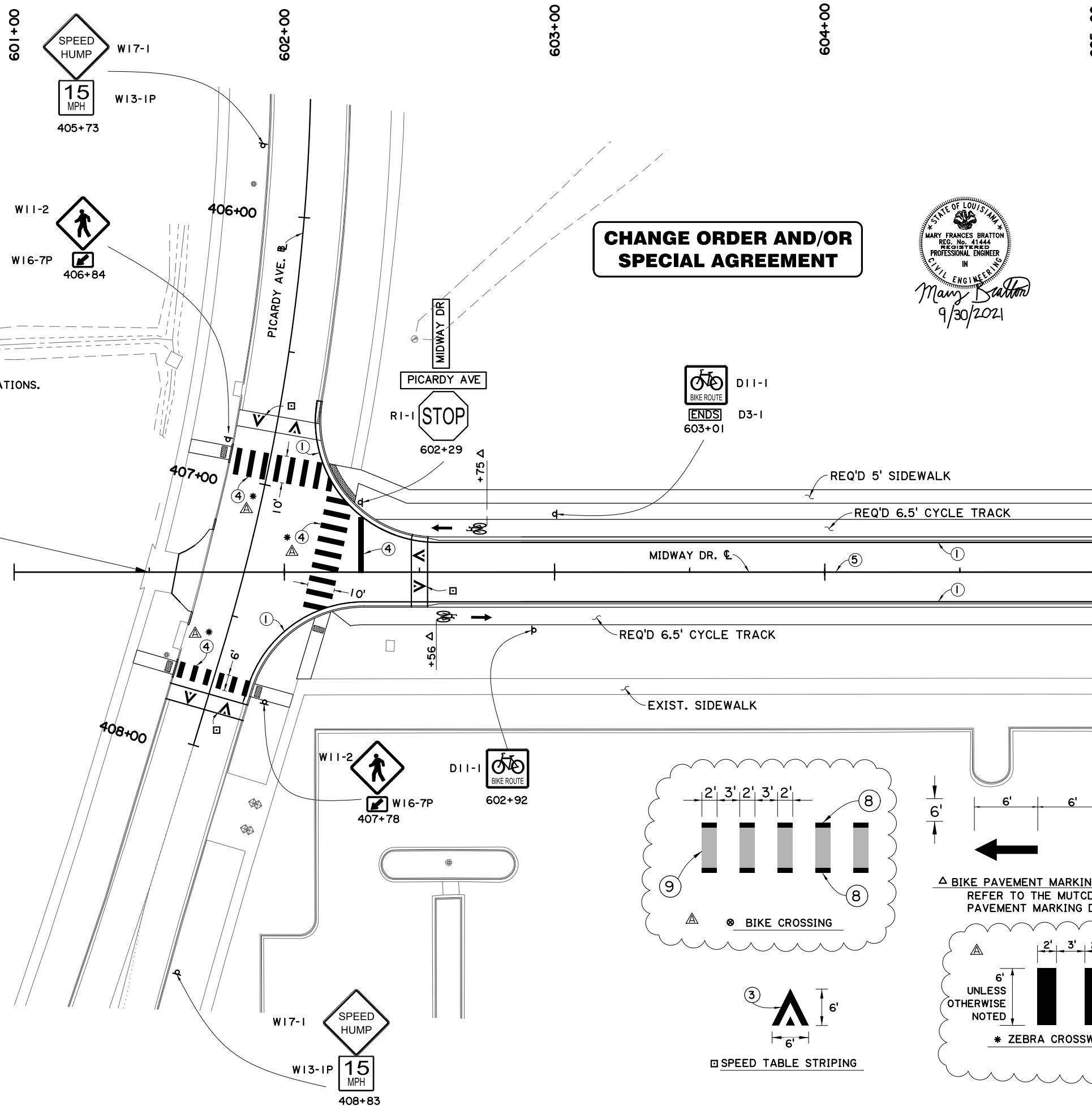
PROPOSED PAV'T MARKING LEGEND

- ① 4" SOLID WHITE STRIPE
  - ② 4" SOLID YELLOW STRIPE
  - ③ 12" SOLID WHITE STRIPE
  - ④ 24" SOLID WHITE STRIPE
  - ⑤ 4" BROKEN YELLOW STRIPE  
W/ AMBER/AMBER REFLECTORS @ 40' O/C
  - ⑥ 8" SOLID WHITE STRIPE  
W/ CRYSTAL/RED REFLECTORS @ 10' O/C
  - ⑦ 4" DOUBLE YELLOW STRIPE  
W/ AMBER/AMBER REFLECTORS @ 10' O/C
  - ⑧ 4" DOTTED WHITE STRIPE
  - ⑨ COLORED SURFACE TREATMENT (BIKE LANES)
- ↖ ↗ PAVEMENT SYMBOL MARKINGS
- ↑ INDICATED DIRECTION OF TRAVEL & DOES NOT REPRESENT PAVEMENT SYMBOL MARKINGS

NOTES:

1. PAVEMENT MARKINGS SHALL BE IN ACCORDANCE WITH THE EAST BATON ROUGE 905-50 STANDARD PLANS AND SPECIFICATIONS.
2. STREET NAMES SIGNS TO BE FURNISHED BY OTHERS BUT INSTALLED BY CONTRACTOR.
3. CONTRACTOR TO COORDINATE WITH EBR TRAFFIC DIVISION BEFORE MARKING/PAINTING CROSSWALKS.

STA. 601+50  
MIDWAY DR.  
BEG. 20-CP-HC-0008  
N: 688618.86  
E: 3355070.38



**CHANGE ORDER AND/OR SPECIAL AGREEMENT**

STATE OF LOUISIANA  
MARY FRANCES BRATTON  
REG. No. 41444  
REGISTERED  
PROFESSIONAL ENGINEER  
IN  
CIVIL ENGINEERING  
*Mary Bratton*  
9/30/2021

SCALE 1"=20'

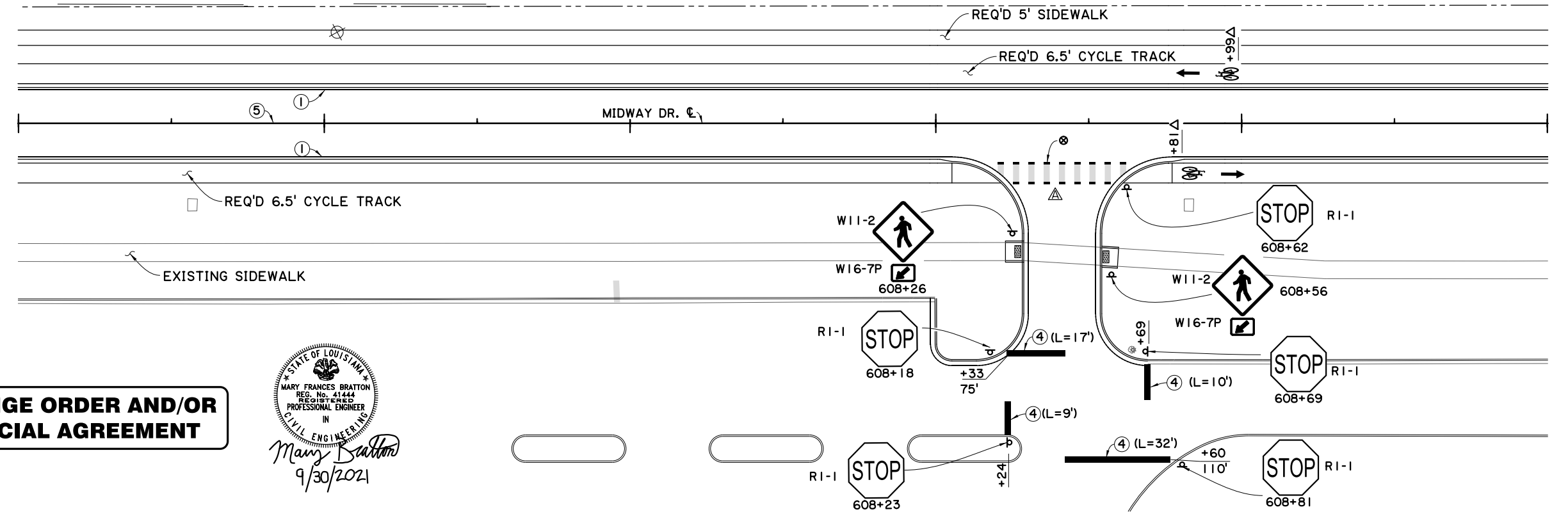
SHEET NUMBER	26A
PARRISH	EAST BATON ROUGE PARISH
CITY PROJECT	20-CP-HC-0008
STATE PROJECT	-
DESIGNED	MFB
CHECKED	GDH
DATE	1 OF 4
REVISION DESCRIPTION	
NO.	
DATE	
BY	
STRIPING & SIGNING LAYOUT	
MIDWAY DR. (PICARDY AVE. TO CONSTANTIN BLVD.)	

V:\2018\active\201802913\03 disciplines\highway\plan development\drawing\change\_order\_2\midway\_stripping\_27.dgn

CHECK PRINTS

11:11

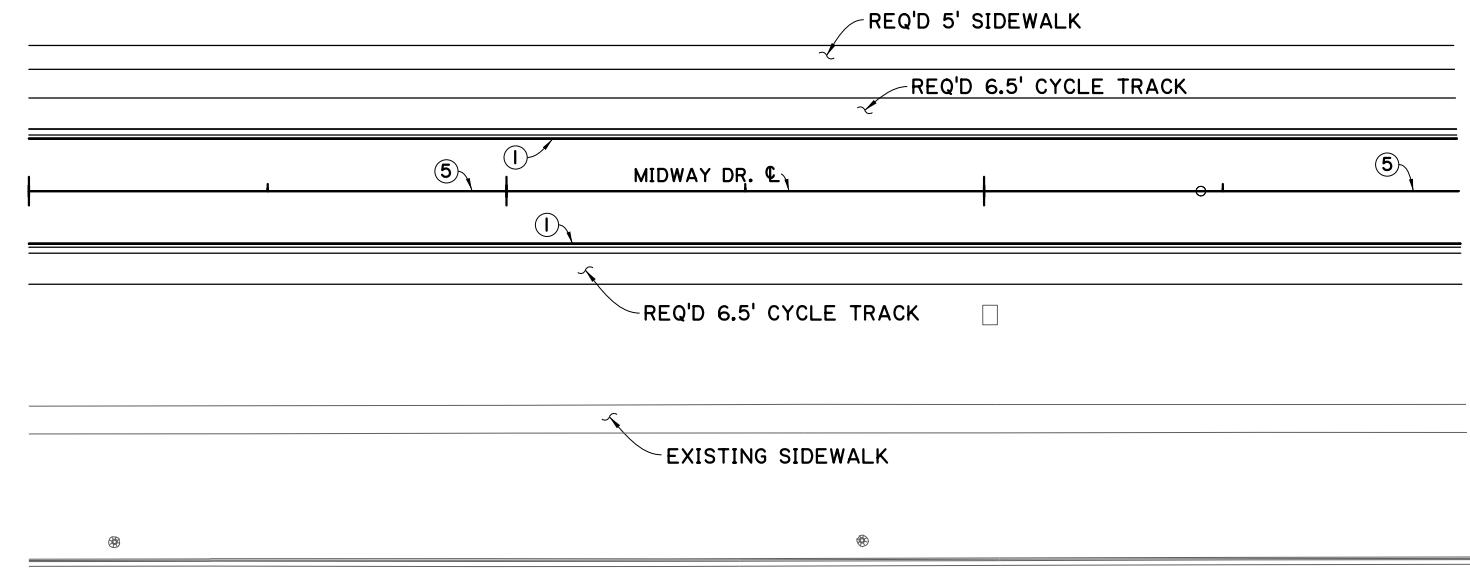
605+00 606+00 607+00 608+00 609+00 610+00



**CHANGE ORDER AND/OR SPECIAL AGREEMENT**



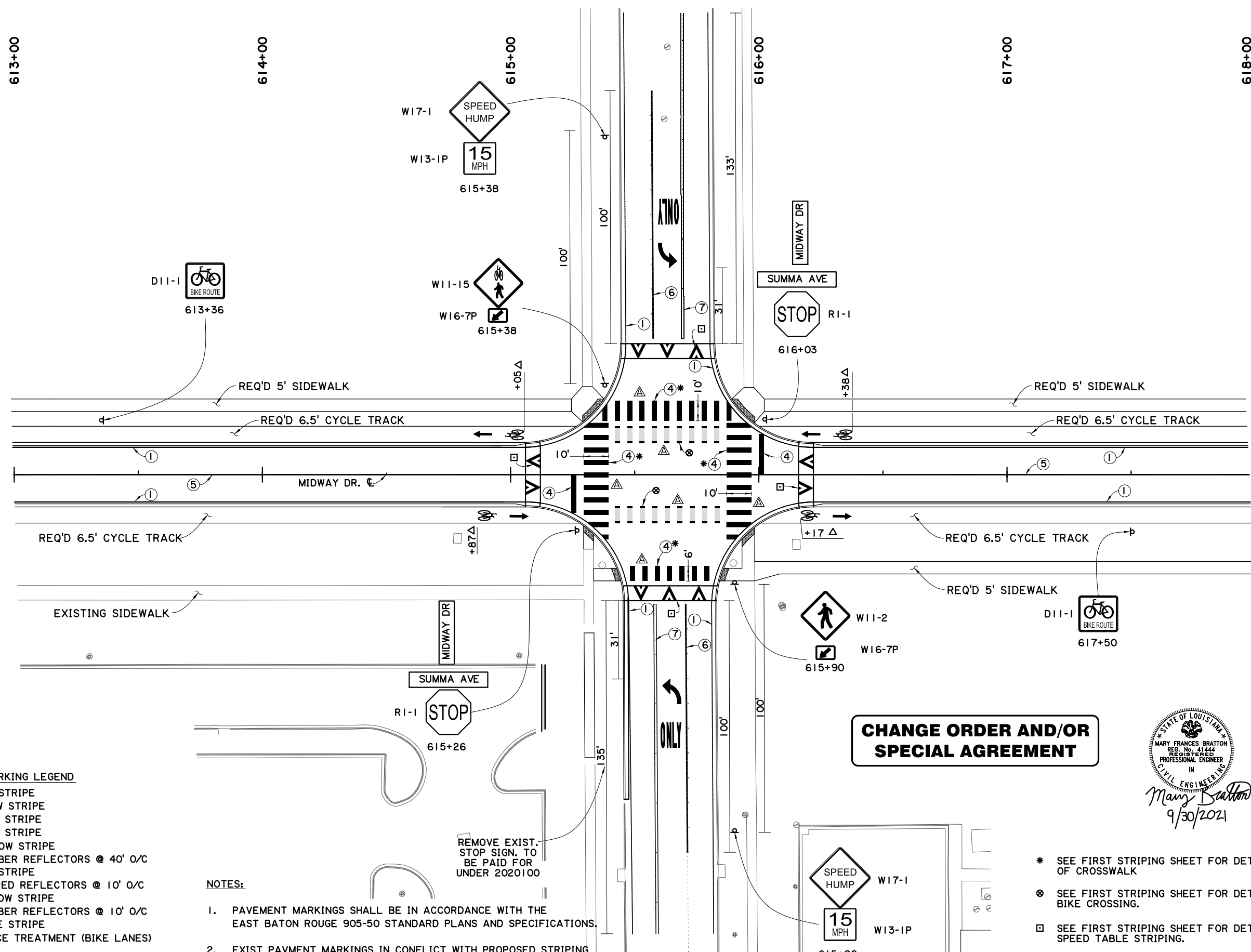
610+00 611+00 612+00 613+00



- PROPOSED PAV'T MARKING LEGEND**
- ① 4" SOLID WHITE STRIPE
  - ② 4" SOLID YELLOW STRIPE
  - ③ 12" SOLID WHITE STRIPE
  - ④ 24" SOLID WHITE STRIPE
  - ⑤ 4" BROKEN YELLOW STRIPE  
W/ AMBER/AMBER REFLECTORS @ 40' O/C
  - ⑥ 8" SOLID WHITE STRIPE  
W/ CRYSTAL/RED REFLECTORS @ 10' O/C
  - ⑦ 4" DOUBLE YELLOW STRIPE  
W/ AMBER/AMBER REFLECTORS @ 10' O/C
  - ⑧ 4" DOTTED WHITE STRIPE
  - ⑨ COLORED SURFACE TREATMENT (BIKE LANES)

- NOTES:**
- 1. PAVEMENT MARKINGS SHALL BE IN ACCORDANCE WITH THE EAST BATON ROUGE 905-50 STANDARD PLANS AND SPECIFICATIONS.
  - △ SEE FIRST STRIPING SHEET FOR DETAILS OF BIKE PAVEMENT MARKING DIMENSIONS.
  - ⊗ SEE FIRST STRIPING SHEET FOR DETAILS OF BIKE CROSSING.

SHEET NUMBER 27A	
PARRISH EAST BATON ROUGE PARISH	CITY PROJECT 20-CP-HC-0008
DESIGNED MFB	DATE SHEET 2 OF 4
CHECKED GDH	REVISION DESCRIPTION
DATE SHEET	BY
NO.	DATE
1-31-23	REVISED BIKE CROSSING
<b>STRIPING &amp; SIGNING LAYOUT</b>	
MIDWAY DR. (PICARDY AVE. TO CONSTANTIN BLVD.)	



SCALE 1"=20'

PROPOSED PAV'T MARKING LEGEND

- ① 4" SOLID WHITE STRIPE
- ② 4" SOLID YELLOW STRIPE
- ③ 12" SOLID WHITE STRIPE
- ④ 24" SOLID WHITE STRIPE
- ⑤ 4" BROKEN YELLOW STRIPE
- ⑥ 8" SOLID WHITE STRIPE  
W/ AMBER/AMBER REFLECTORS @ 40' O/C
- ⑦ 4" DOUBLE YELLOW STRIPE  
W/ CRYSTAL/RED REFLECTORS @ 10' O/C
- ⑧ 4" DOTTED WHITE STRIPE
- ⑨ COLORED SURFACE TREATMENT (BIKE LANES)

↖ PAVEMENT SYMBOL MARKINGS

↑ INDICATED DIRECTION OF TRAVEL & DOES NOT REPRESENT PAVEMENT SYMBOL MARKINGS

NOTES:

1. PAVEMENT MARKINGS SHALL BE IN ACCORDANCE WITH THE EAST BATON ROUGE 905-50 STANDARD PLANS AND SPECIFICATIONS.
2. EXIST PAVMENT MARKINGS IN CONFLICT WITH PROPOSED STRIPING ON SUMMA TO BE REMOVED.
3. STREET NAME SIGNS TO BE FURNISHED BY OTHERS BUT INSTALLED BY CONTRACTOR.

REMOVE EXIST. STOP SIGN. TO BE PAID FOR UNDER 2020100

**CHANGE ORDER AND/OR SPECIAL AGREEMENT**

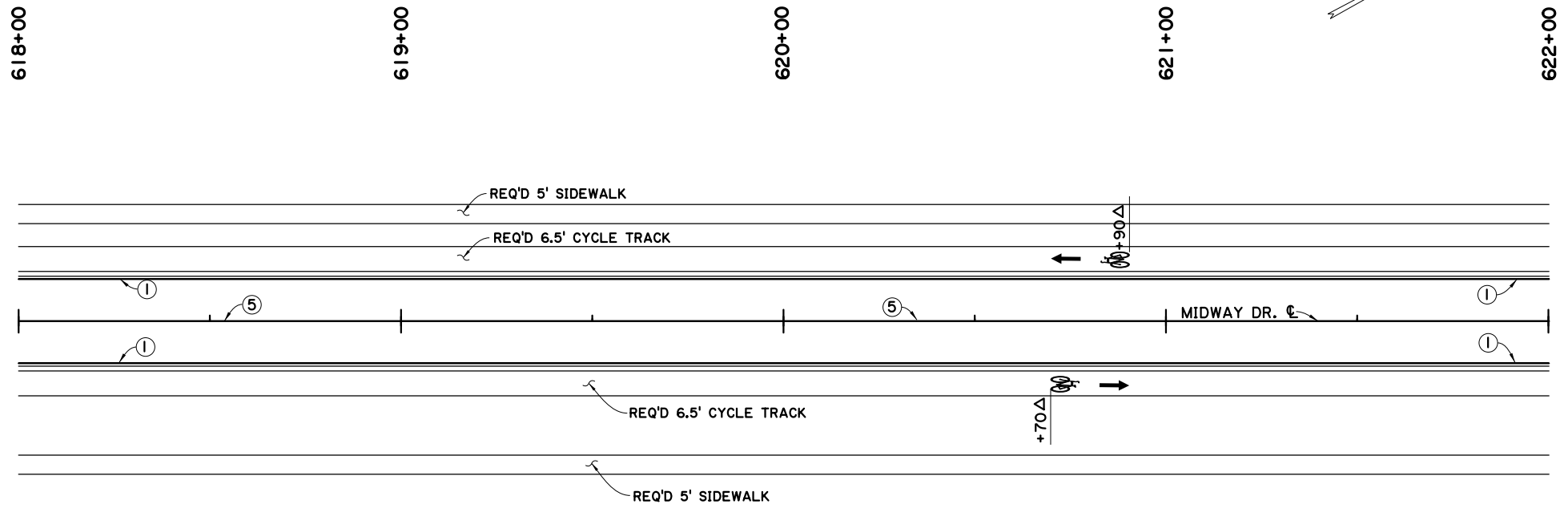
STATE OF LOUISIANA  
 MARY FRANCES BRATTON  
 REG. No. 41444  
 REGISTERED PROFESSIONAL ENGINEER  
 IN  
 CIVIL ENGINEERING  
*Mary Bratton*  
 9/30/2021

- \* SEE FIRST STRIPING SHEET FOR DETAILS OF CROSSWALK
- ⊗ SEE FIRST STRIPING SHEET FOR DETAILS OF BIKE CROSSING.
- SEE FIRST STRIPING SHEET FOR DETAILS OF SPEED TABLE STRIPING.
- △ SEE FIRST STRIPING SHEET FOR DETAILS OF BIKE PAVEMENT MARKING DIMENSIONS.

SHEET NUMBER 28A	
PARRISH EAST BATON ROUGE PARISH	CITY PROJECT 20-CP-HC-0008
DESIGNED MFB	DATE SHEET 3 OF 4
CHECKED GDH	DATE SHEET 3 OF 4
DETAILED DTA	DATE SHEET 3 OF 4
CHECKED MFB	DATE SHEET 3 OF 4
NO. DATE REVISION DESCRIPTION	
1	1-31-23 REVISED CROSSWALK & BIKE CROSSING
BY	
STRIPING & SIGNING LAYOUT	
MIDWAY DR. (PICARDY AVE. TO CONSTANTIN BLVD.)	

V:\2018\active\201802913\03 disciplines\highway\plan development\drawing\change\_order\_2\midway\_stripping\_29.dgn 11:3

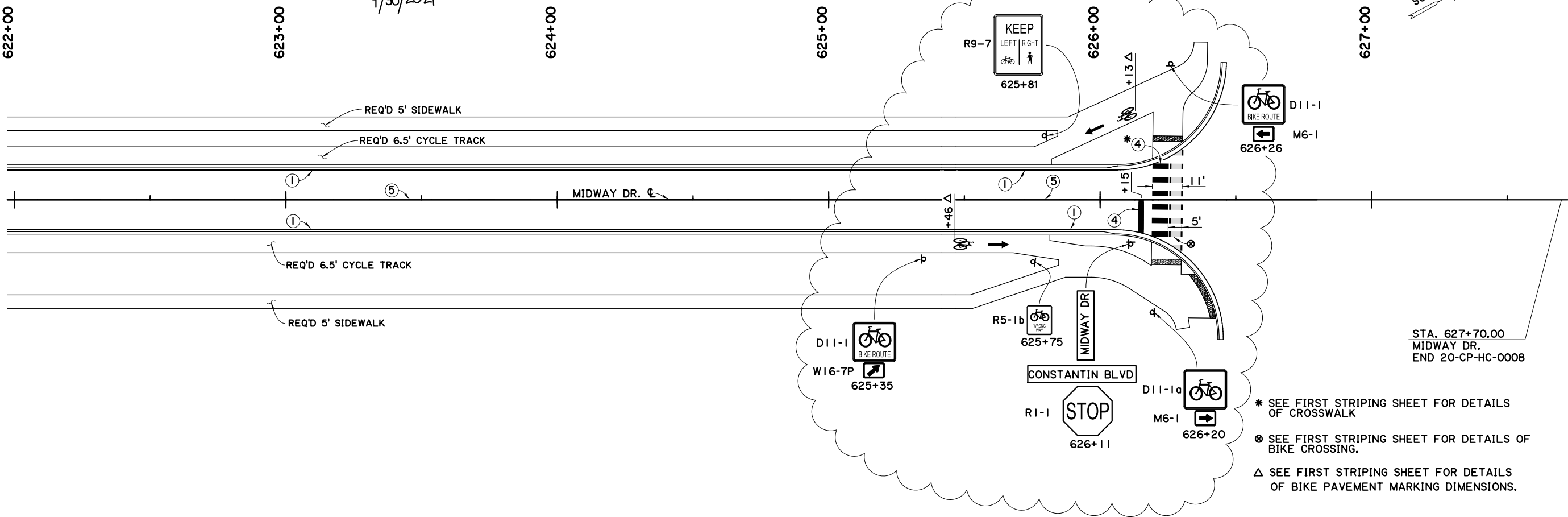
CHECK PRINTS



- PROPOSED PAV'T MARKING LEGEND**
- ① 4" SOLID WHITE STRIPE
  - ② 4" SOLID YELLOW STRIPE
  - ③ 12" SOLID WHITE STRIPE
  - ④ 24" SOLID WHITE STRIPE
  - ⑤ 4" BROKEN YELLOW STRIPE  
W/ AMBER/AMBER REFLECTORS @ 40' O/C
  - ⑥ 8" SOLID WHITE STRIPE  
W/ CRYSTAL/RED REFLECTORS @ 10' O/C
  - ⑦ 4" DOUBLE YELLOW STRIPE  
W/ AMBER/AMBER REFLECTORS @ 10' O/C
  - ⑧ 4" DOTTED WHITE STRIPE
  - ⑨ COLORED SURFACE TREATMENT (BIKE LANES)
- ↖ PAVEMENT SYMBOL MARKINGS  
↑ INDICATED DIRECTION OF TRAVEL & DOES NOT REPRESENT PAVEMENT SYMBOL MARKINGS

- NOTES:**
- PAVEMENT MARKINGS SHALL BE IN ACCORDANCE WITH THE EAST BATON ROUGE 905-50 STANDARD PLANS AND SPECIFICATIONS.
  - STREET NAME SIGNS TO BE FURNISHED BY OTHERS BUT INSTALLED BY CONTRACTOR.

**CHANGE ORDER AND/OR SPECIAL AGREEMENT**



SHEET NUMBER	29A	PARISH	EAST BATON ROUGE PARISH	CITY PROJECT	20-CP-HC-0008
DESIGNED	MFB	DATE	DATE	DATE	DATE
CHECKED	GDH	DATE	DATE	DATE	DATE
DETAILED	DTA	DATE	DATE	DATE	DATE
CHECKED	MFB	DATE	DATE	DATE	DATE
NO.	1-31-23	REVISION DESCRIPTION	SIGNING		
BY		REVISION DESCRIPTION	4 OF 4		

**STRIPING & SIGNING LAYOUT**

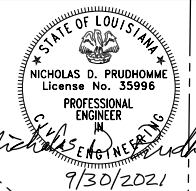
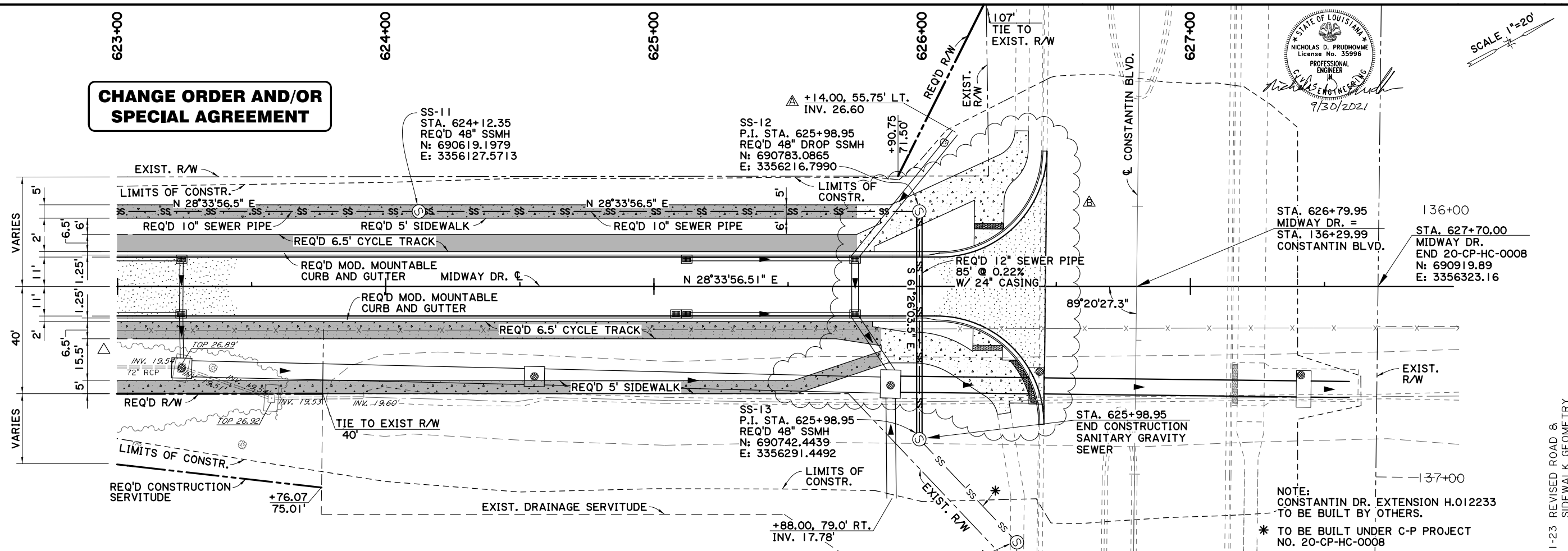
MIDWAY DR. (PICARDY AVE. TO CONSTANTIN BLVD.)

11:11

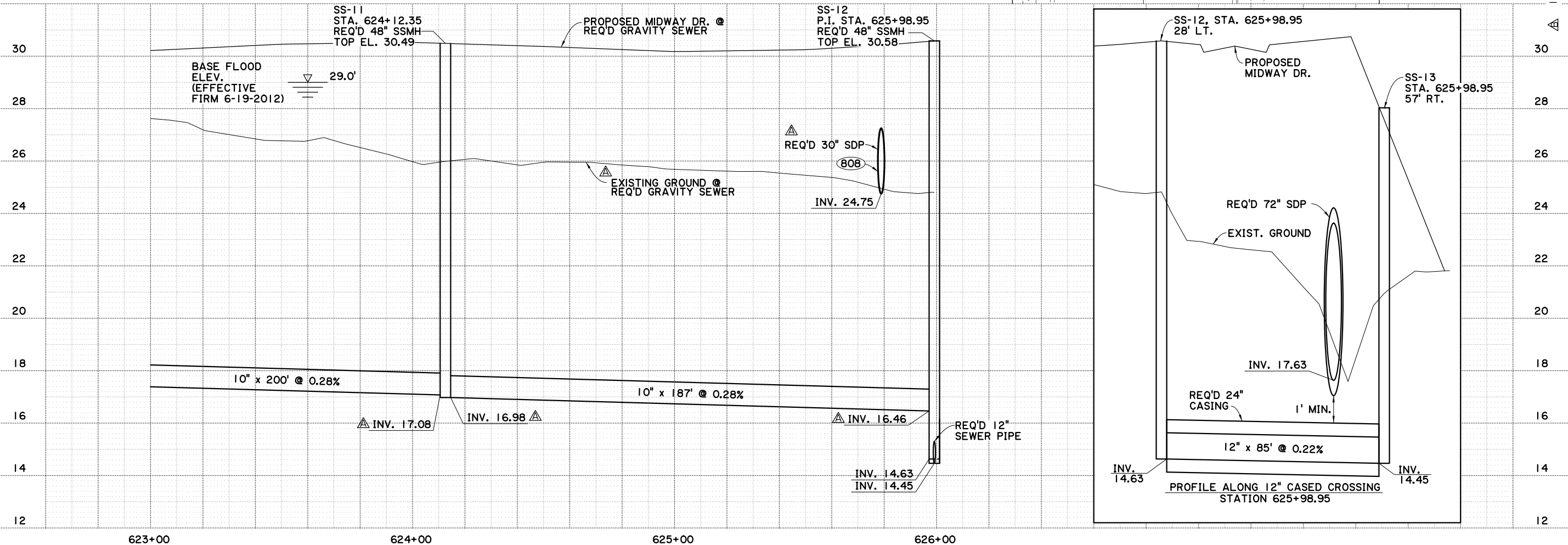
V:\2018\active\201802913\03 disciplines\highway\plan development\drawing\change\_order\_2\dwg\_gravity\_pp\_14.dgn

CHECK PRINTS

**CHANGE ORDER AND/OR SPECIAL AGREEMENT**



SCALE 1"=20'



SHEET NUMBER	35B	
PARISH	EAST BATON ROUGE PARISH	
CITY PROJECT	20-CP-HC-0008	
STATE PROJECT		
DESIGNED	NDP	
CHECKED	AMR	
DATE	8 OF 8	
REVISIONS		
NO.	DATE	REVISION DESCRIPTION
1	5-17-22	REVISED INVERTS; REVISED DRAINAGE; UPDATED EXIST. GROUND LINE

1-31-23 REVISED ROAD & SIDEWALK GEOMETRY

**MOVEBR**

PLAN AND PROFILE SHEET  
GRAVITY SEWER

MIDWAY DR. (PICARDY AVE. TO CONSTANTIN BLVD.)

**BR**  
CITY OF BATON ROUGE  
PLANNING & ENGINEERING

**Stantec**