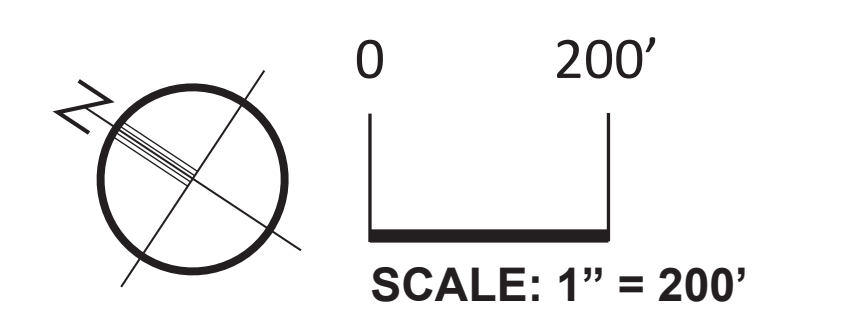
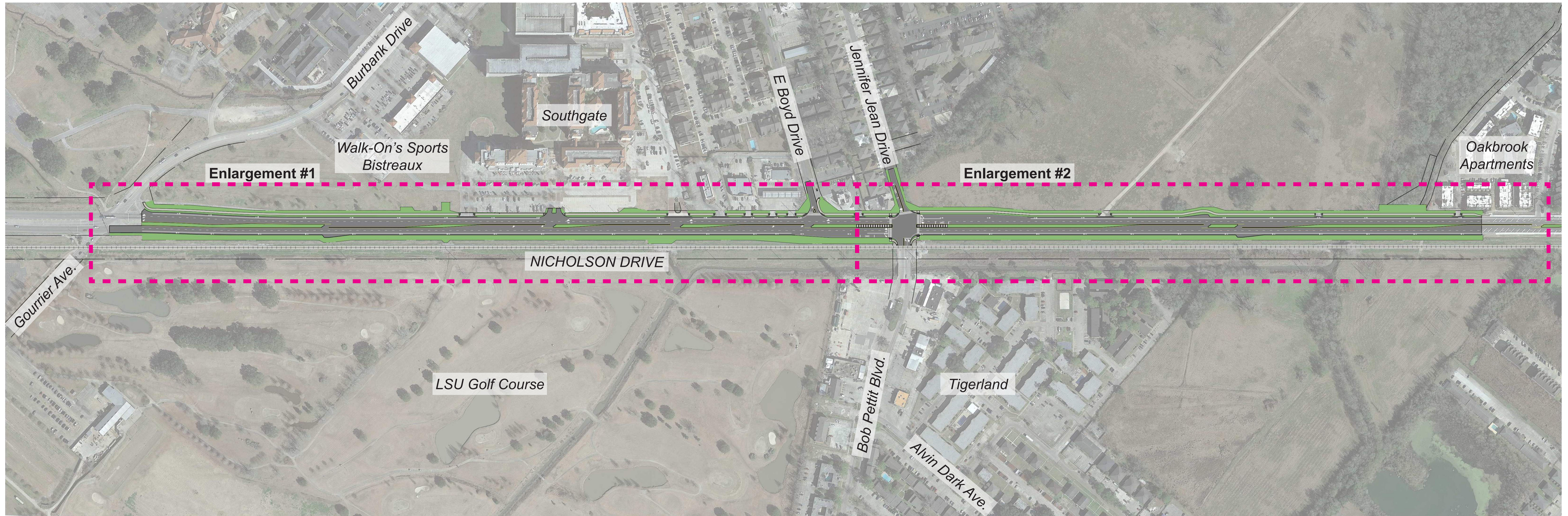


PROPOSED IMPROVEMENT PLAN - OVERALL ALIGNMENT



NOTE:
ROADWAY IMPROVEMENTS ARE CONCEPTUAL ONLY AND SUBJECT TO CHANGE BASED UPON FINAL APPROVAL AND ENGINEERING DESIGN. MOVEBR IS NOT LIABLE FOR THE USE OR MISUSE, MISINTERPRETATION, OR ERRORS IN ANY CALCULATIONS DERIVED FROM ILLUSTRATED CONCEPTUAL IMPROVEMENT PLAN.

NICHOLSON DRIVE SEGMENT 1 (BRIGHTSIDE - GOURRIER)

COMMUNITY ENGAGEMENT MEETINGS
AUGUST 2022

PROPOSED IMPROVEMENT PLAN - ENLARGEMENT 1



NICHOLSON DRIVE SEGMENT 1 (BRIGHTSIDE - GOURRIER)

COMMUNITY ENGAGEMENT MEETINGS
AUGUST 2022

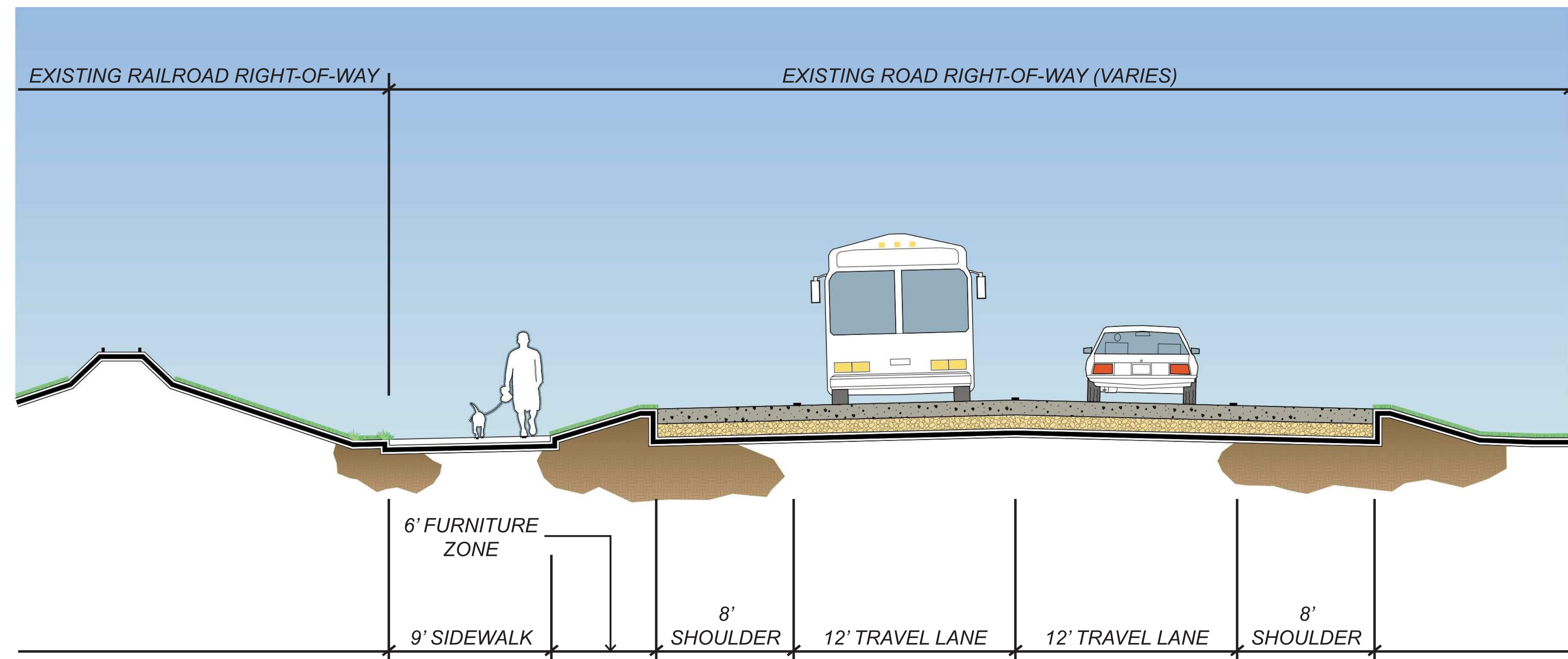
PROPOSED IMPROVEMENT PLAN - ENLARGEMENT 2



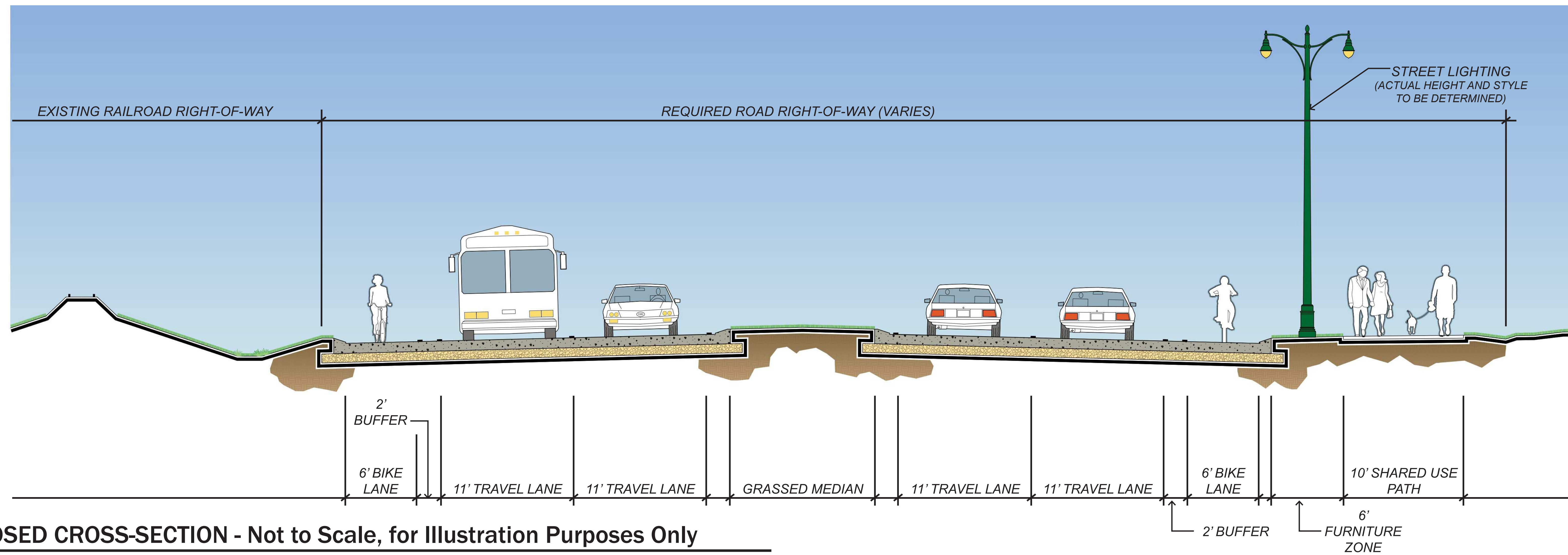
NICHOLSON DRIVE SEGMENT 1 (BRIGHTSIDE - GOURRIER)

COMMUNITY ENGAGEMENT MEETINGS
AUGUST 2022

PROPOSED IMPROVEMENT PLAN - TYPICAL SECTIONS



TYPICAL EXISTING CROSS-SECTION - Not to Scale, for Illustration Purposes Only



TYPICAL PROPOSED CROSS-SECTION - Not to Scale, for Illustration Purposes Only

NICHOLSON DRIVE SEGMENT 1 (BRIGHTSIDE - GOURRIER)

COMMUNITY ENGAGEMENT MEETINGS
AUGUST 2022