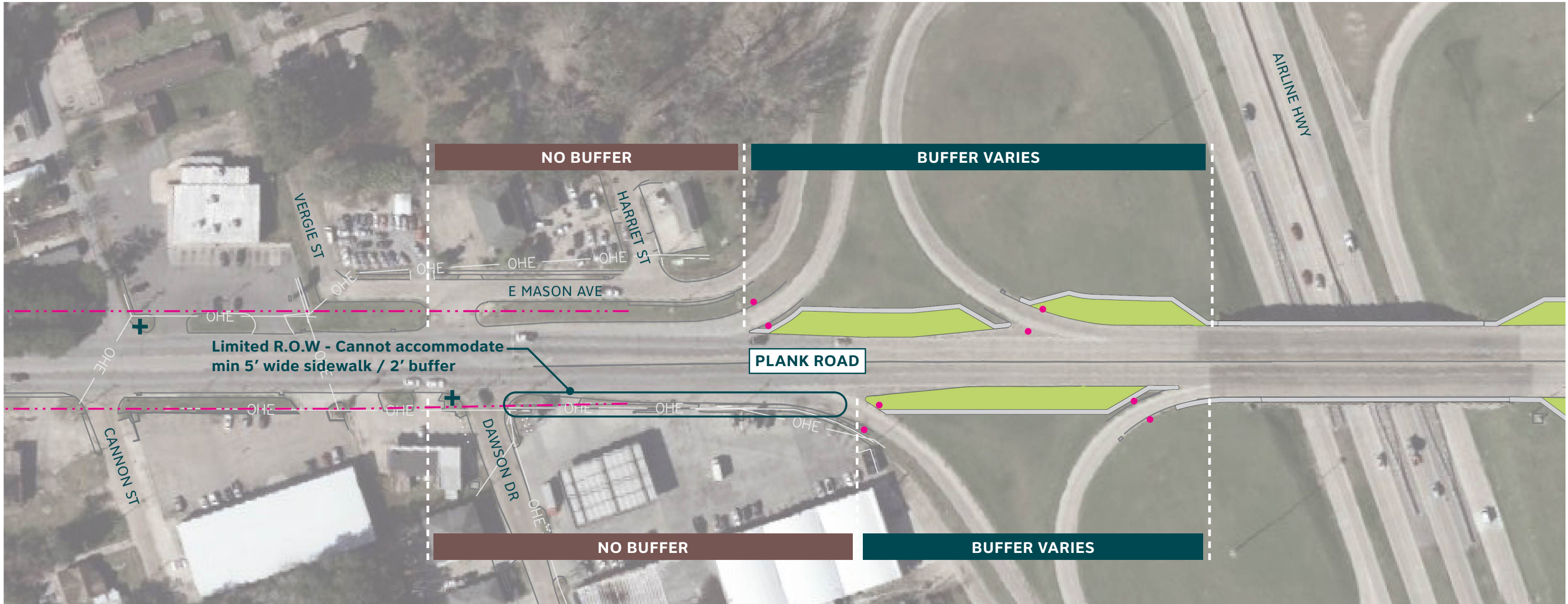


DAWSON TO AIRLINE

Preliminary and Subject to Change



For more information visit:
movebr.brla.gov/plankseg2



EXISTING		PROPOSED	
	Right of Way		Sidewalk / Sidepath
	Utilities - Overhead Electrical		Buffer
	Top of Curb		**Improved Bus Station
	Sidewalk		**Improved Bus Shelter
	Bus Shelter		Crosswalks
	Bus Stop		Street Trees 25' off center
	Vegetation (Trees, Shrubs)		***Non-signalized pedestrian crossing with signage and flashing beacons

ADDITIONAL NOTES:

1. See plan profile sheets for sidewalk locations and offsets.

2. *Extent and location of green infrastructure improvement areas to be further assessed in Final Design Phase.

3. **All bus stations and shelters to be paved to back of roadway curb. Location subject to change.

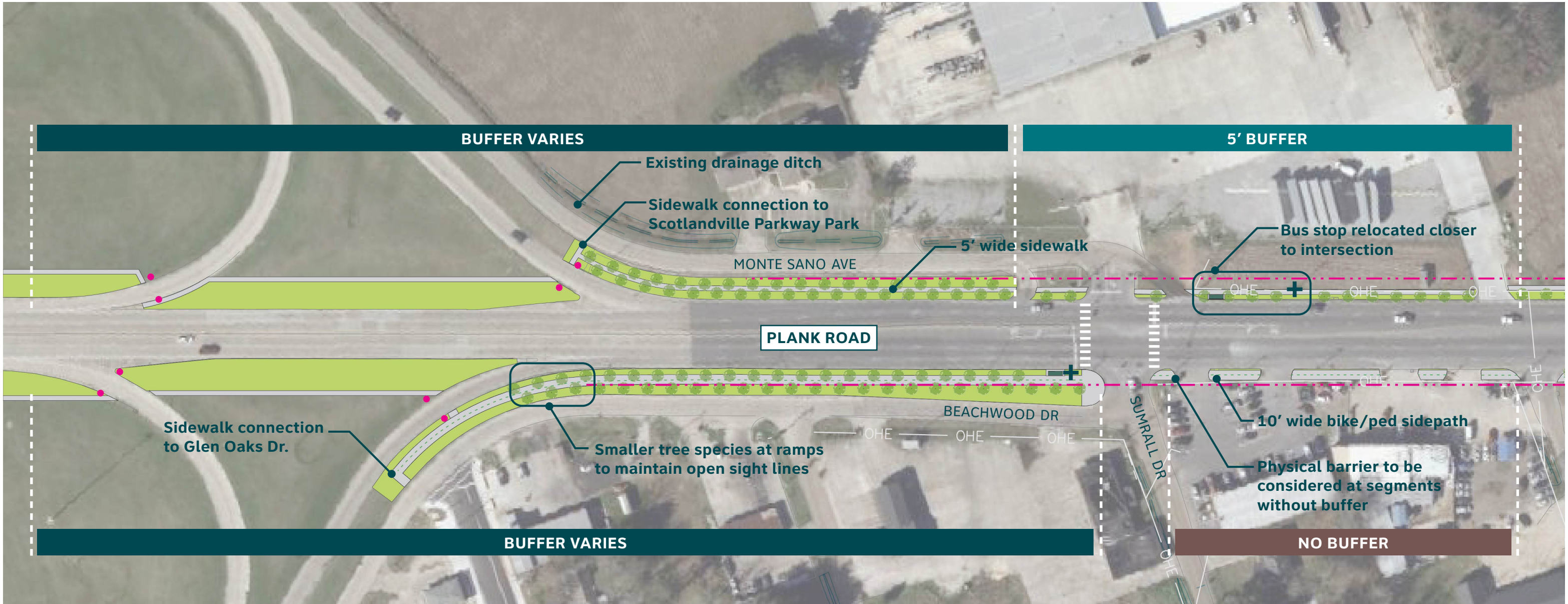
4. ***All non-signalized crossings to include MUTCD W11-2 signage and usage of rectangular rapid flashing beacons upon LADOTD approval.

AIRLINE TO CROWN

Preliminary and Subject to Change



For more information visit:
movebr.brla.gov/plankseg2



EXISTING		PROPOSED	
	Right of Way		Bus Shelter
	Utilities - Overhead Electrical		Bus Stop
	Top of Curb		Vegetation (Trees, Shrubs)
	Sidewalk		Sidewalk / Sidepath
			Buffer
			**Improved Bus Station
			**Improved Bus Shelter
			Crosswalks
			Street Trees 25' off center
			***Non-signalized pedestrian crossing with signage and flashing beacons

ADDITIONAL NOTES:

1. See plan profile sheets for sidewalk locations and offsets.

2. *Extent and location of green infrastructure improvement areas to be further assessed in Final Design Phase.

3. **All bus stations and shelters to be paved to back of roadway curb. Location subject to change.

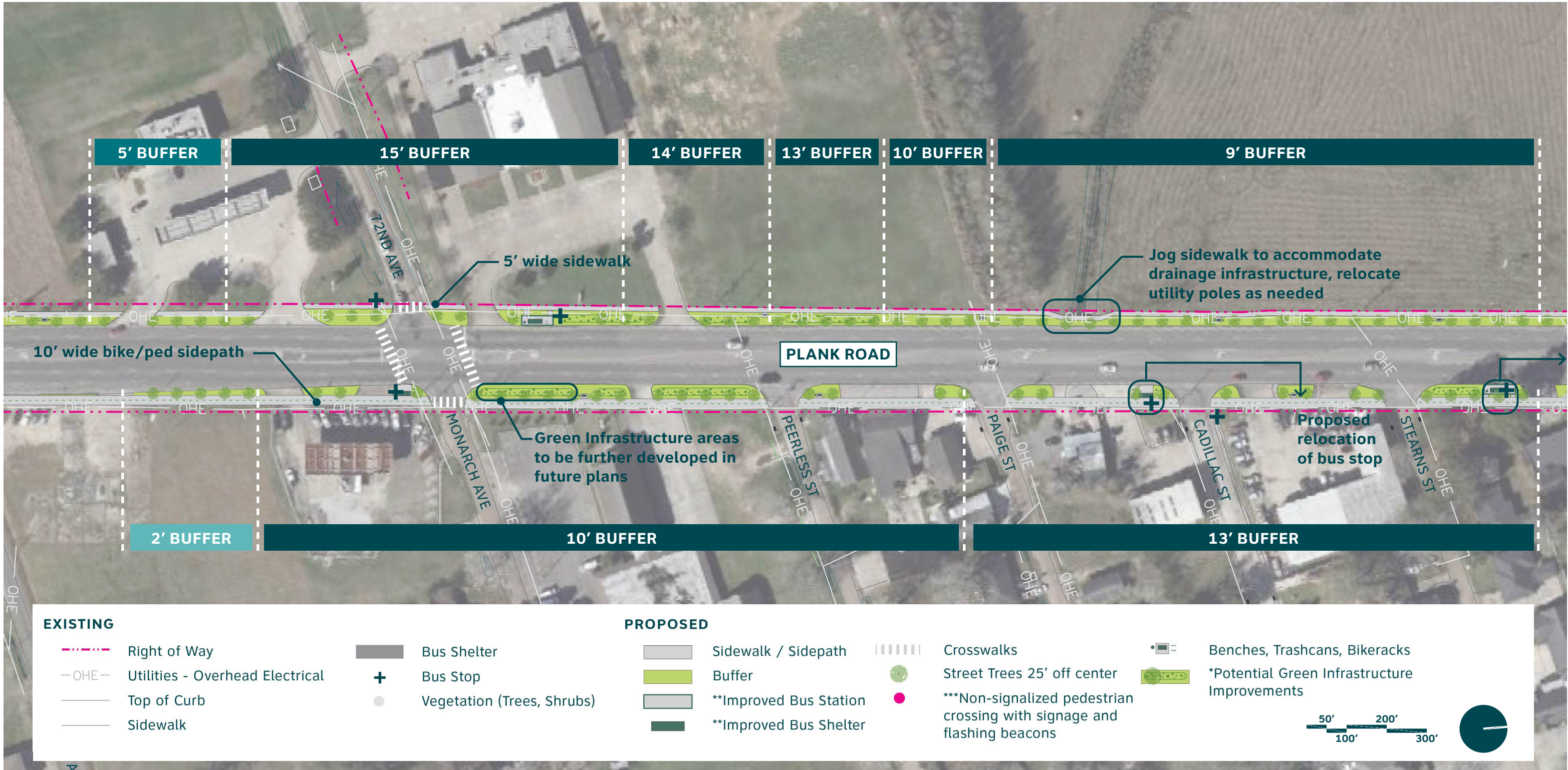
4. ***All non-signalized crossings to include MUTCD W11-2 signage and usage of rectangular rapid flashing beacons upon LADOTD approval.

CROWN TO PACKARD

Preliminary and Subject to Change



For more information visit:
movebr.brla.gov/plankseg2



ADDITIONAL NOTES:

1. See plan profile sheets for sidewalk locations and offsets.

2. *Extent and location of green infrastructure improvement areas to be further assessed in Final Design Phase.

3. **All bus stations and shelters to be paved to back of roadway curb. Location subject to change.

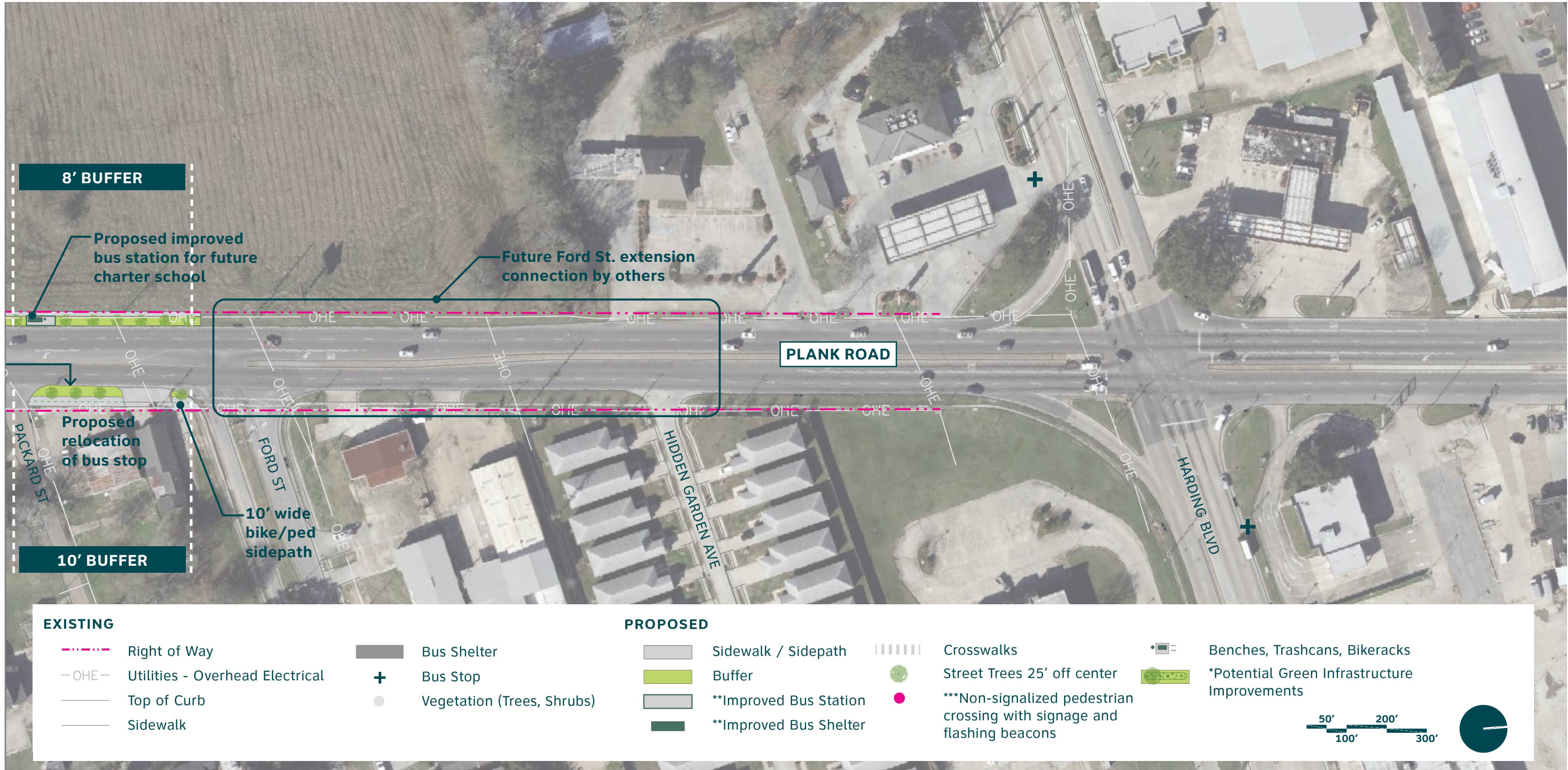
4. ***All non-signalized crossings to include MUTCD W11-2 signage and usage of rectangular rapid flashing beacons upon LADOTD approval.

HARDING TO PACKARD

Preliminary and Subject to Change



For more information visit:
movebr.brla.gov/plankseg2



ADDITIONAL NOTES:

1. See plan profile sheets for sidewalk locations and offsets.

2. *Extent and location of green infrastructure improvement areas to be further assessed in Final Design Phase.

3. **All bus stations and shelters to be paved to back of roadway curb. Location subject to change.

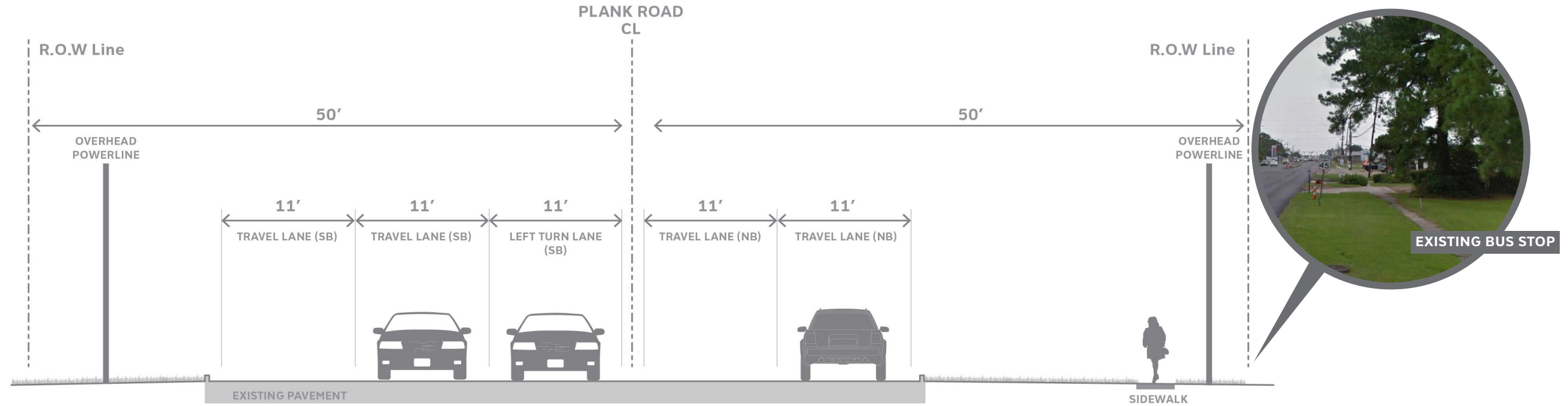
4. ***All non-signalized crossings to include MUTCD W11-2 signage and usage of rectangular rapid flashing beacons upon LADOTD approval.

EXISTING VS. PROPOSED STREET SECTION

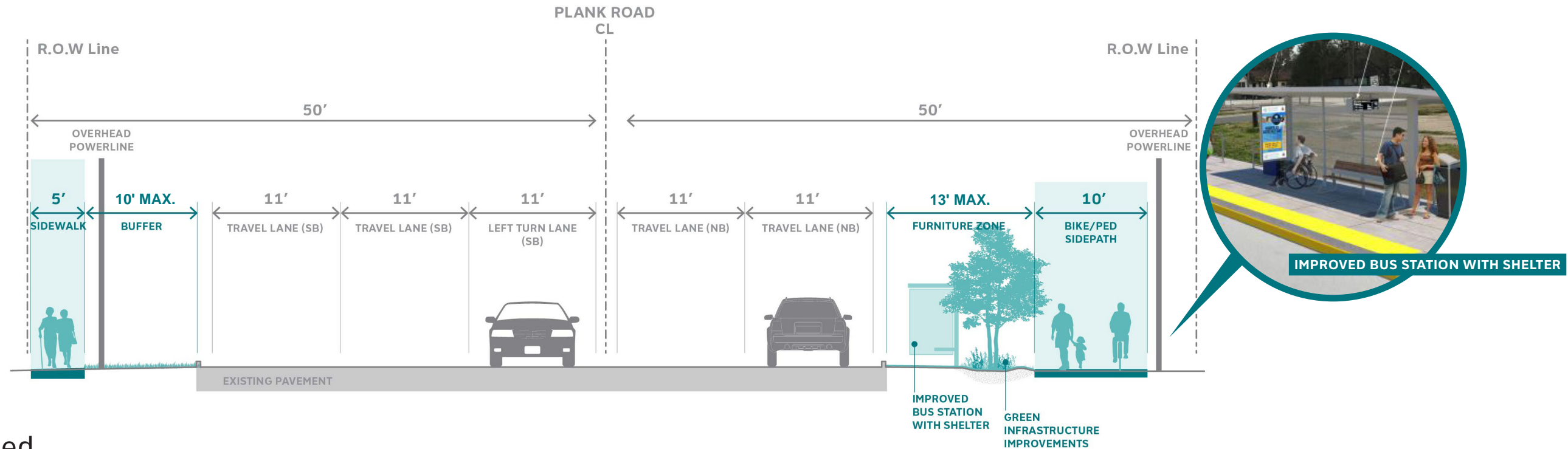
Preliminary and Subject to Change



For more information visit:
movebr.brla.gov/plankseg2



Typical Section - Existing



Typical Section - Proposed

ADDITIONAL NOTES:

1. See plan profile sheets for sidewalk locations and offsets.

2. *Extent and location of green infrastructure improvement areas to be further assessed in Final Design Phase.

3. **All bus stations and shelters to be paved to back of roadway curb. Location subject to change.

4. ***All non-signalized crossings to include MUTCD W11-2 signage and usage of rectangular rapid flashing beacons upon LADOTD approval.